



Gateway MS2285 Hard Drive Replacement

Replace a faulty hard drive or add additional disk space to your Gateway MS2285.

Written By: Chris mello



INTRODUCTION

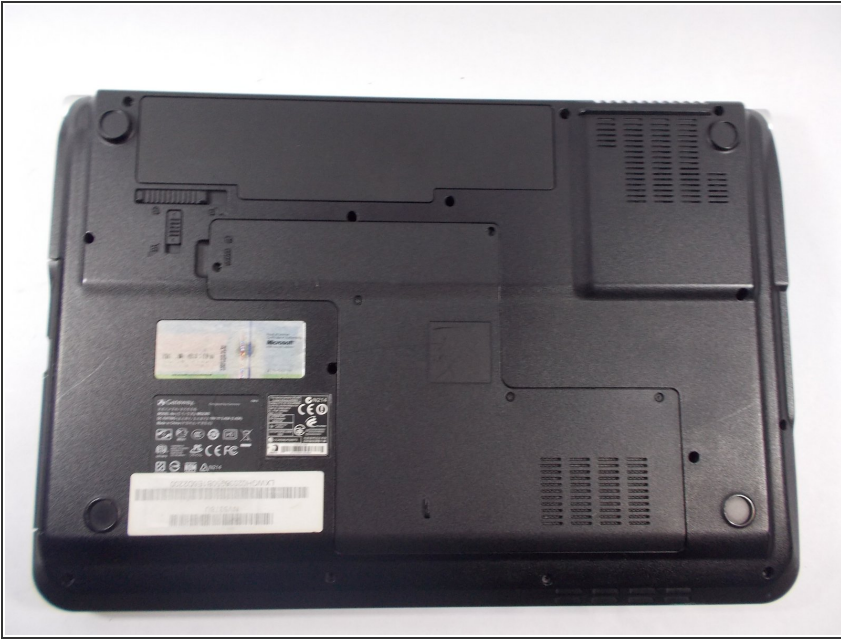
Upgrading your hard drive will allow you to store more movies, pictures and, applications on it. Also, if you add a solid-state hard drive, your boot time will decrease. Furthermore, hard drives tend to fail after long periods of time, so backing up your data and replacing your hard drive is one way to make sure your documents are safe.



TOOLS:

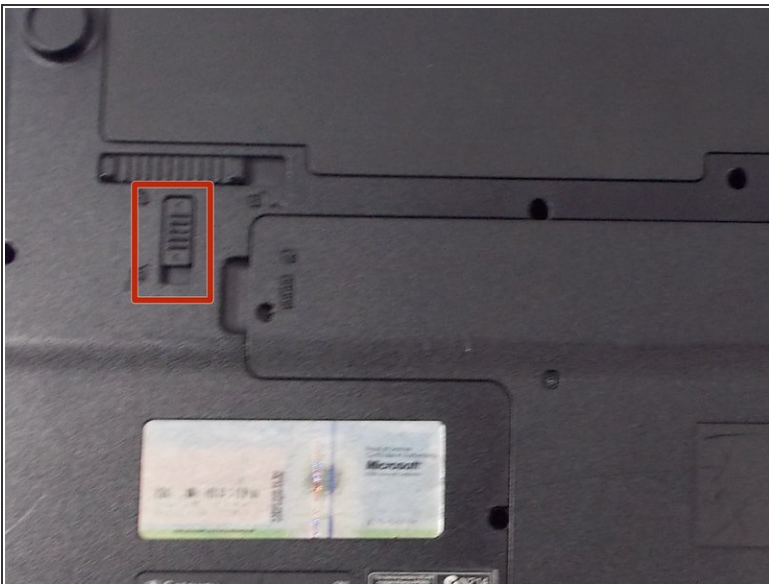
- [Phillips #00 Screwdriver](#) (1)
-

Step 1 — Turn Laptop Over



- Turn the laptop over so that the underside is facing towards you.

Step 2 — Unlock The Battery



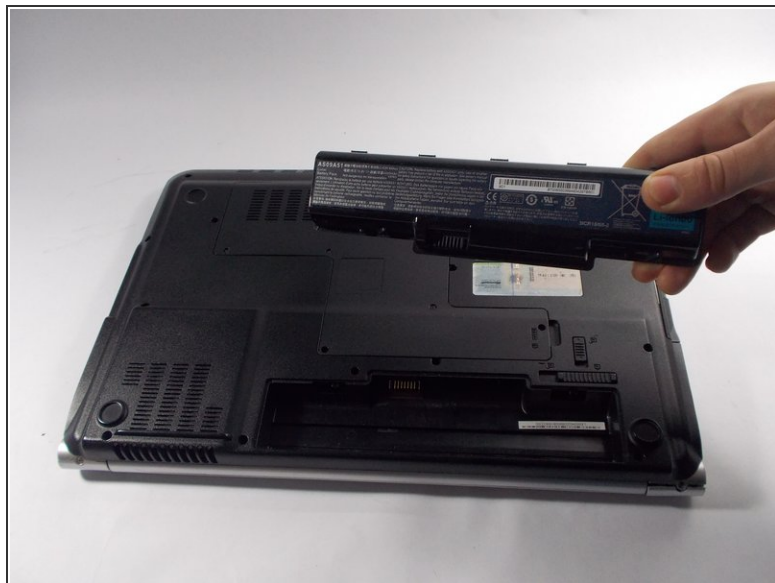
- Slide the short slider one towards the unlocked lock symbol.

Step 3 — Release The Battery



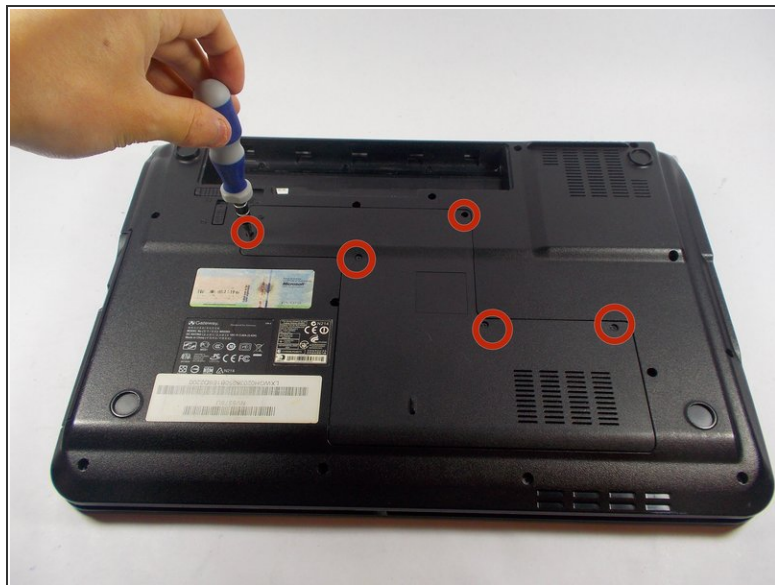
- Slide the long slider towards the unlocked lock icon.
- This slider is spring loaded and may require a little force.
- If done correctly, a click will be heard and the battery will be slightly raised.

Step 4 — Remove The Battery



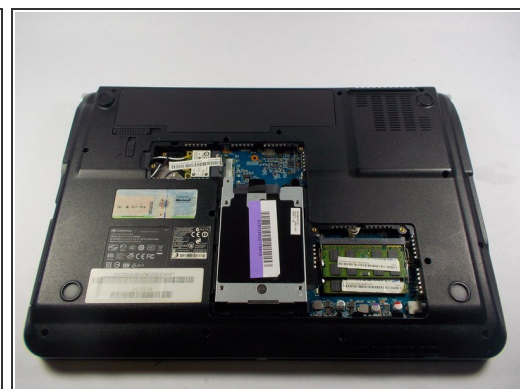
- Grasp the battery's raised end and lift upwards.

Step 5 — Unscrew Backplate



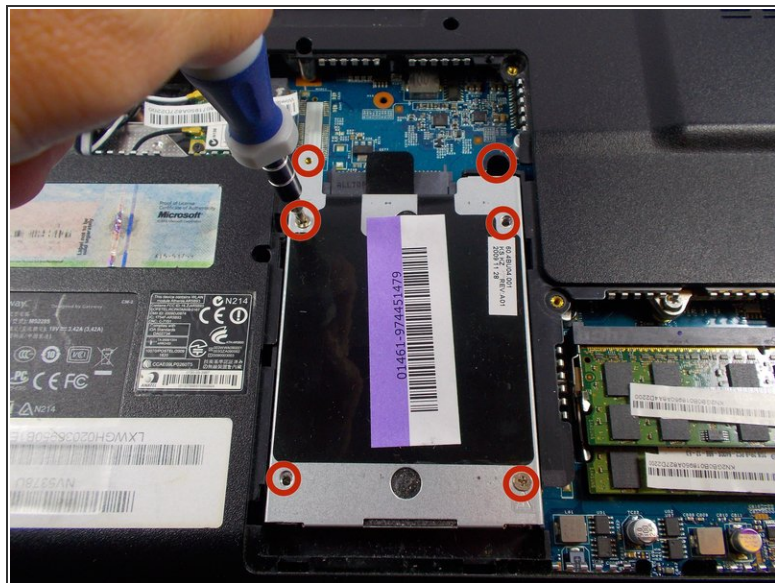
- Use the Phillips head screwdriver to remove the five screws holding the back plate.
- ⓘ The screws are counter-clockwise threaded.

Step 6 — Remove Back Plate



- Place fingers under back plate via the indentation and lift upwards to remove.

Step 7 — Unscrew Hard Drive Cover



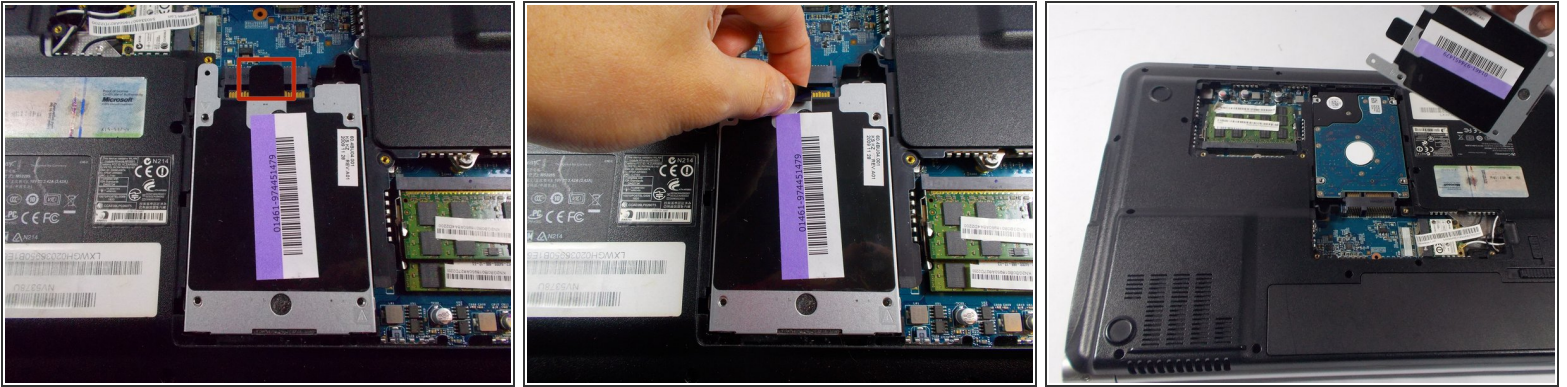
- Unscrew the six screws holding the hard drive cover in place

Step 8 — Unlock Hard Drive Cover and Hard Drive



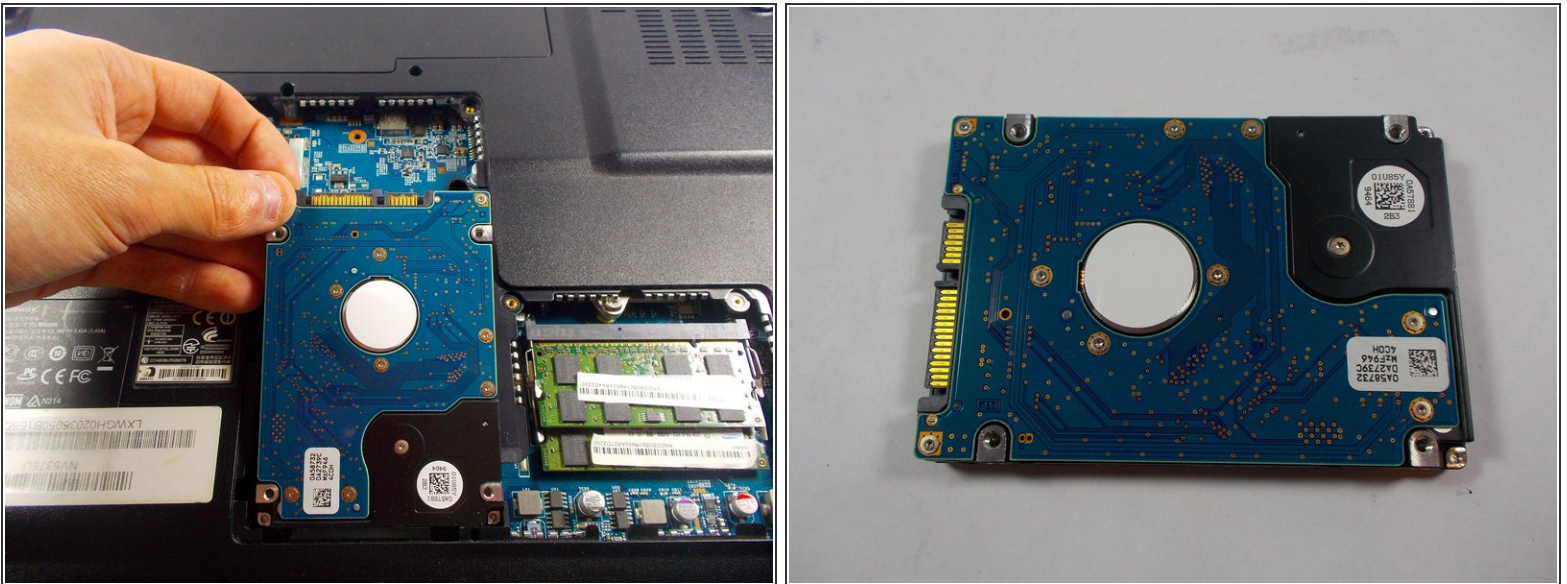
- Grip onto the cover and slide it away from the connector to release the cover and hard drive.

Step 9 — Remove Hard Drive Cover



- Grip onto the black plastic tab to lift the end enough to get your fingers under.
- Once it is high enough, place another finger or fingers under the cover and lift straight off.

Step 10 — Remove Hard Drive



- Use hand to grab hard drive and remove.
- ⚠ Do not touch the gold connectors.

To reassemble your device, follow these instructions in reverse order.