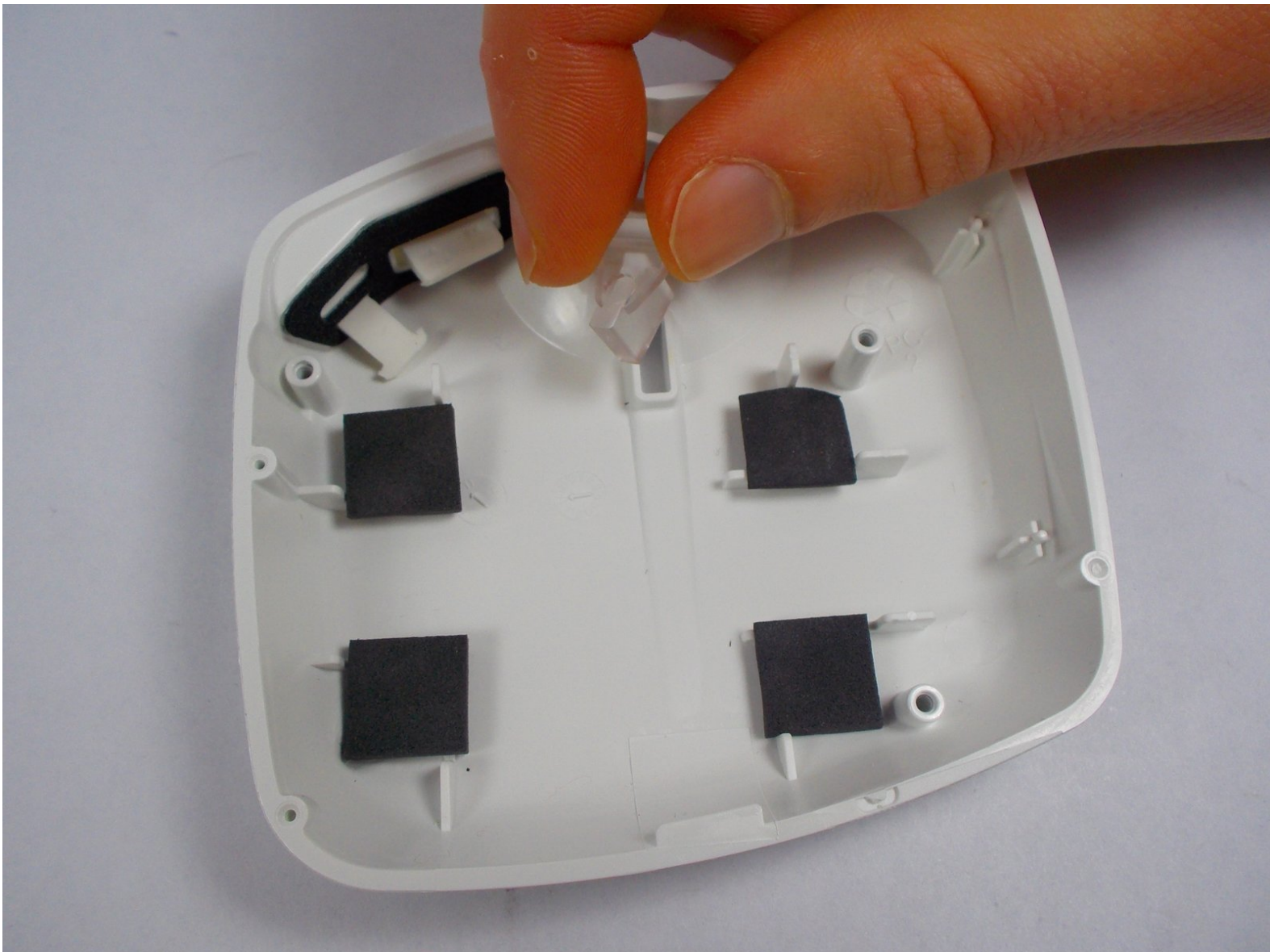




# Solio Bolt Power Button Replacement

This guide demonstrates how to replace the power/interface button of the Solio Bolt.

Written By: Ethel

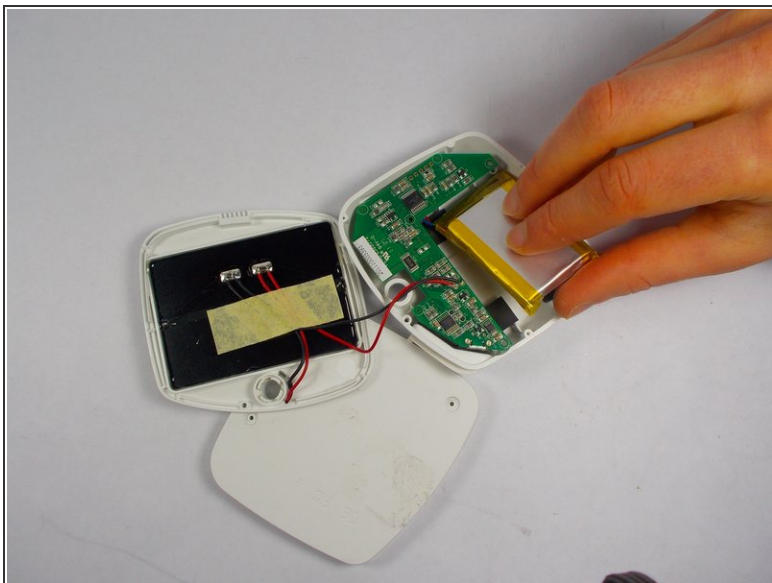




## TOOLS:

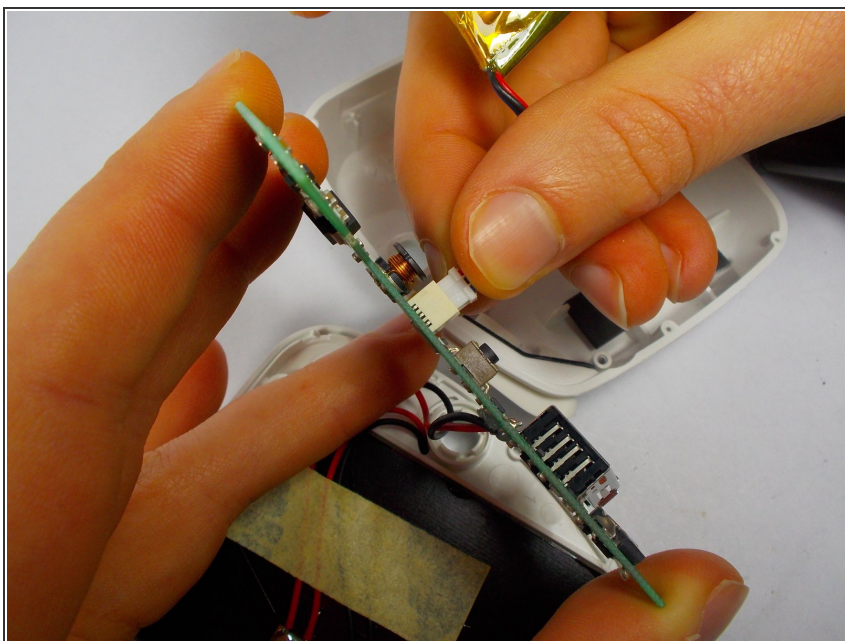
- [Phillips #00 Screwdriver](#) (1)
  - [Spudger](#) (1)
-

## Step 1 — Free Motherboard



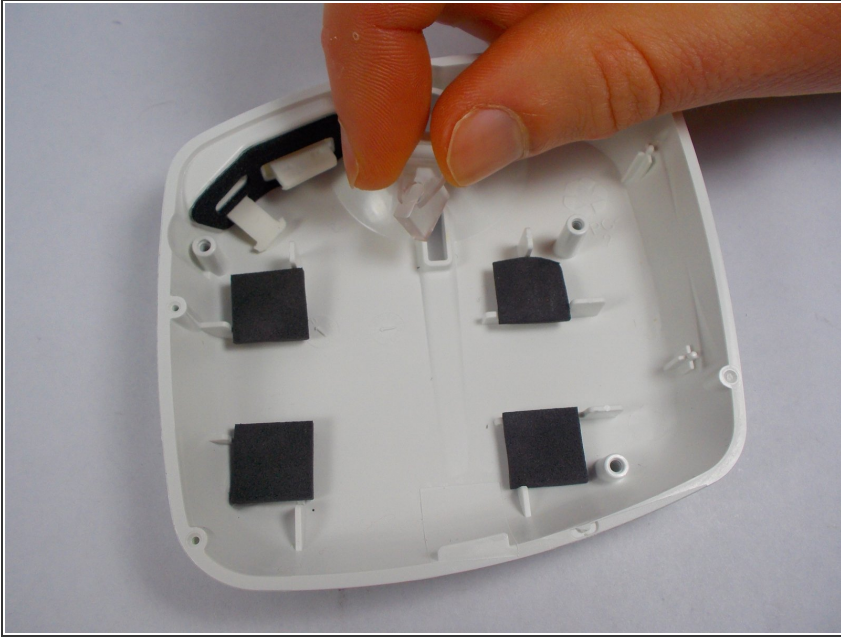
- Move the battery slightly, the motherboard can now be lifted from the device case.

## Step 2 — Disconnect Battery



- On the underside of the motherboard, remove the battery lead from its connecting terminal.

### Step 3 — Replace Button



- On the device case, beneath the motherboard, remove the power button.

To reassemble your device, follow these instructions in reverse order.