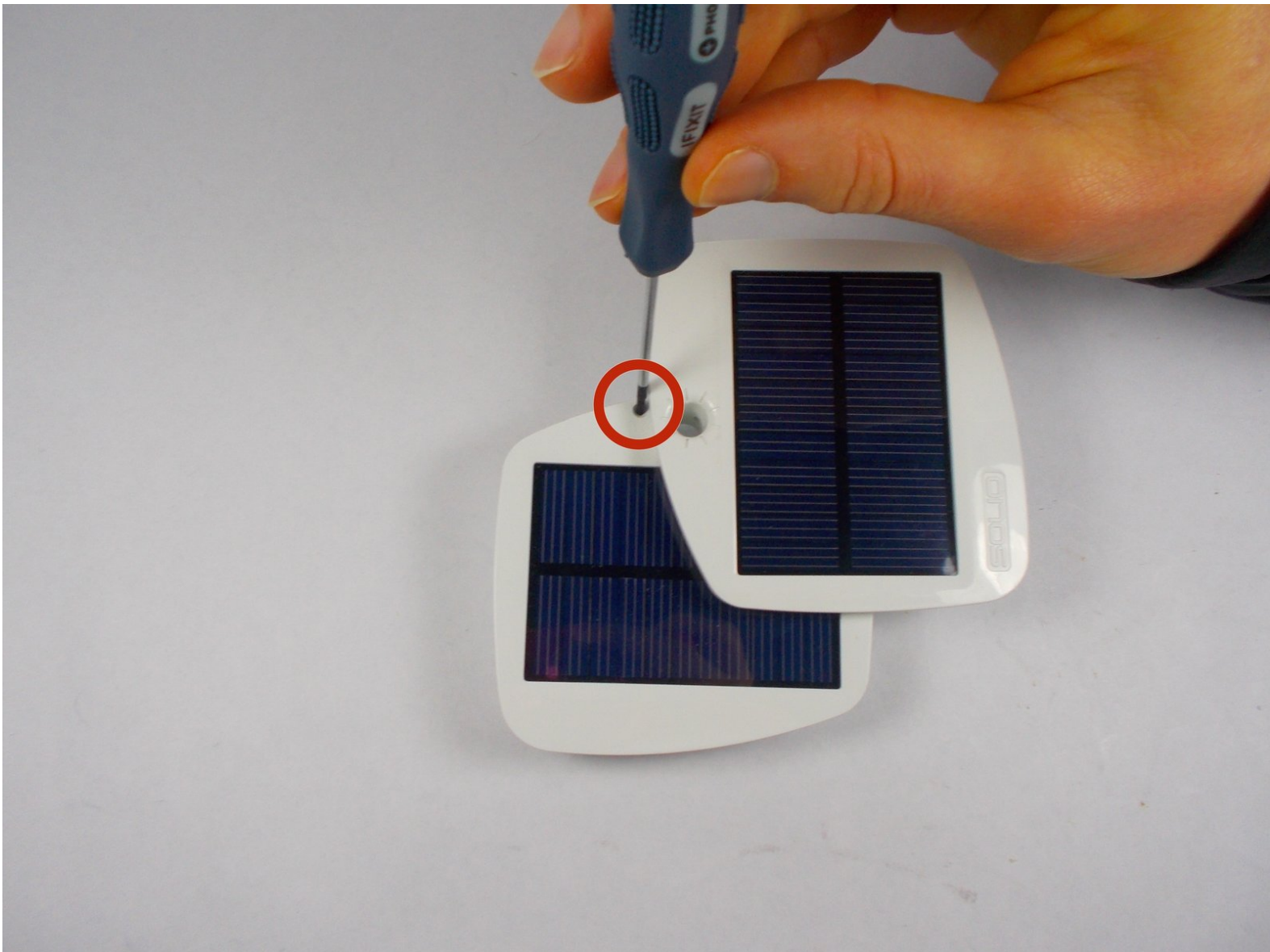




# Solio Bolt Battery Holder Replacement

A guide to replace the battery holder of the Solio Bolt

Written By: Ethel

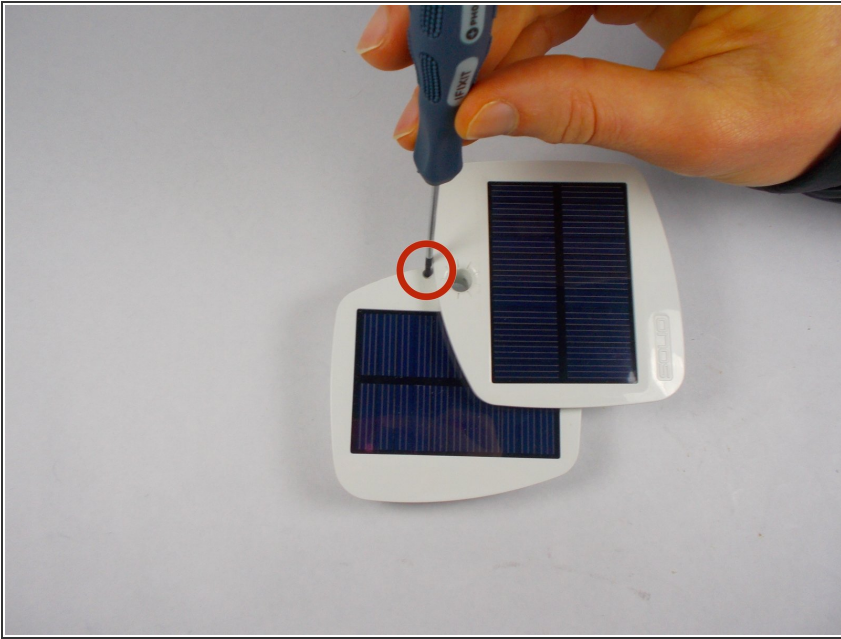




## TOOLS:

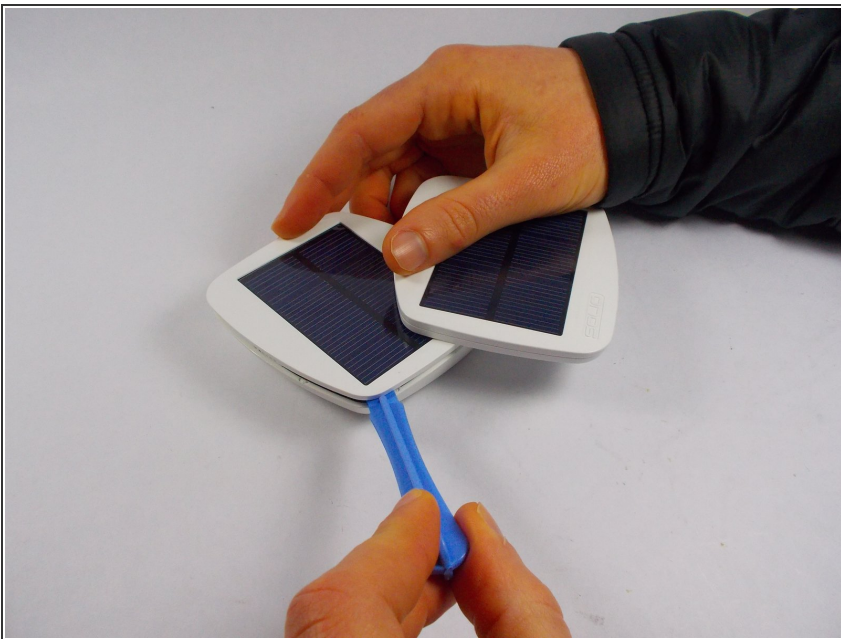
- [Phillips #00 Screwdriver](#) (1)
  - [Spudger](#) (1)
-

## Step 1 — Remove Screw



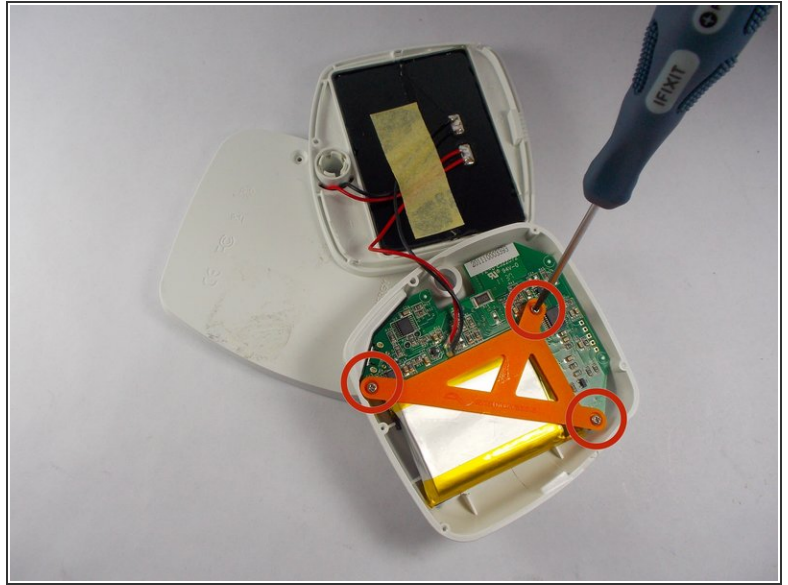
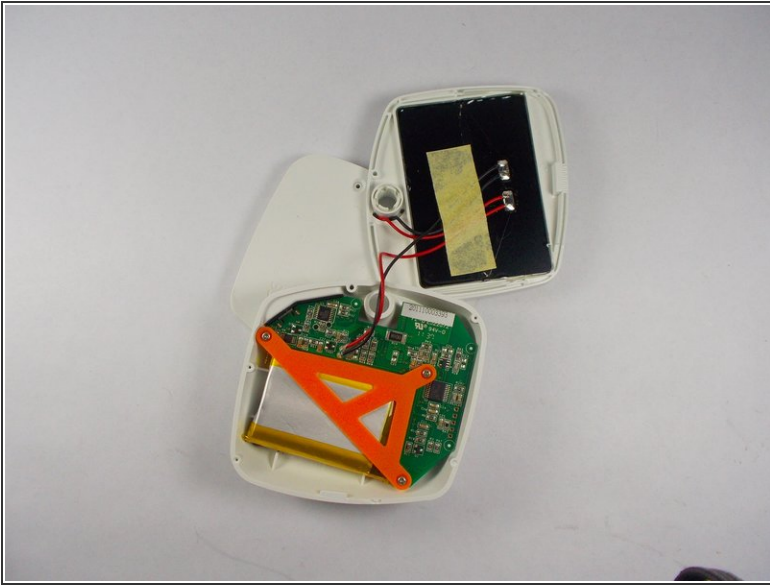
- Open the solar panel of the Solio Bolt. Using a philips screwdriver, remove the screw.

## Step 2 — Open Case



- Use a plastic spudger to pry apart the case.

### Step 3 — Remove The 'Battery Holder' Assembly



- Use a philips screwdriver to remove the three screws securing the battery cradle to the device case.

To reassemble your device, follow these instructions in reverse order.