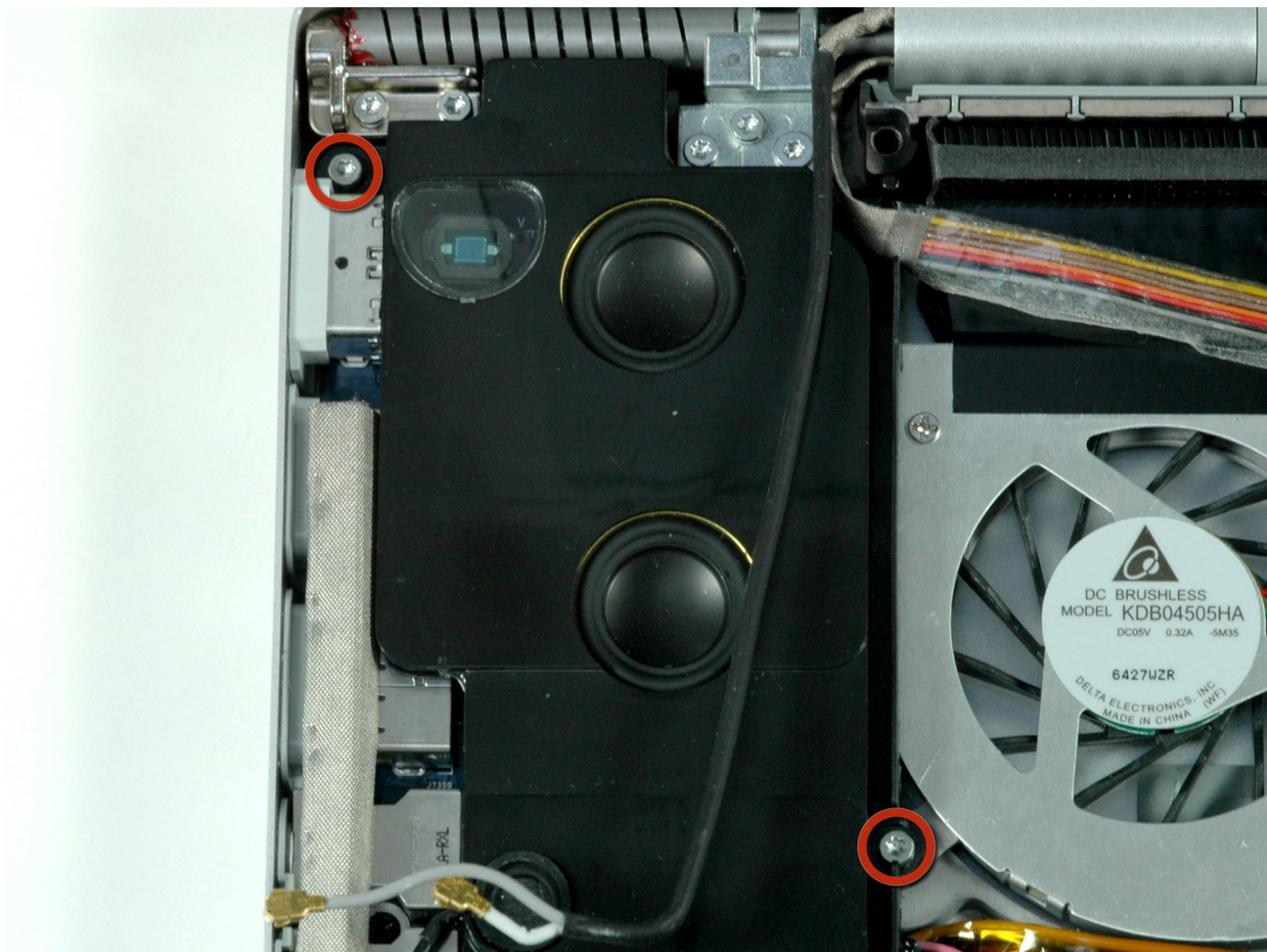




# MacBook Pro 17" Models A1151 A1212 A1229 and A1261 Left Fan Replacement

Written By: iRobot



# INTRODUCTION

Replacing a defective fan is pretty easy and will keep your laptop running cool.



## TOOLS:

- [Phillips #00 Screwdriver](#) (1)
- [Spudger](#) (1)
- [T6 Torx Screwdriver](#) (1)



## PARTS:

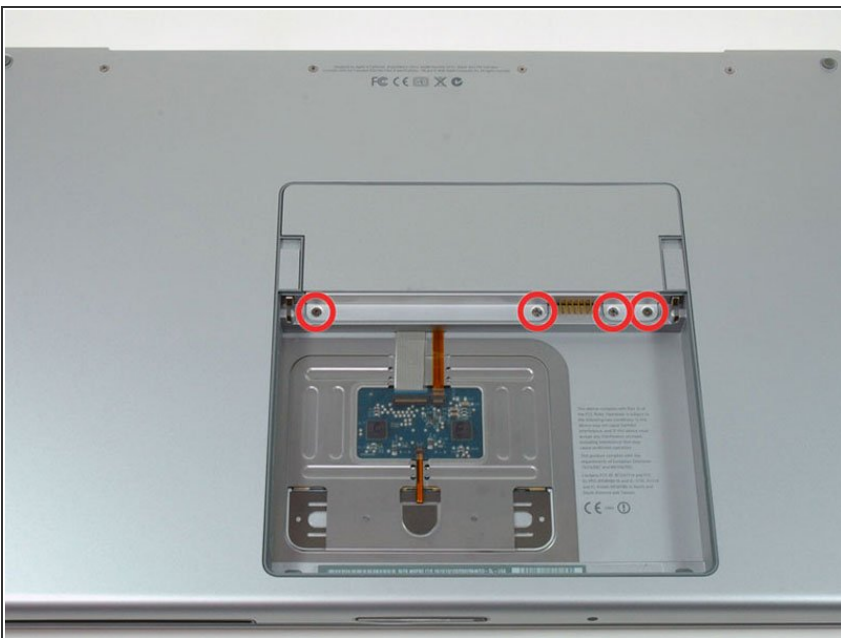
- [MacBook Pro 17" \(Model A1151\) Left Fan](#) (1)
- [MacBook Pro 17" \(Model A1212\) Left Fan](#) (1)
- [MacBook Pro 17" \(Model A1229\) Left Fan](#) (1)
- [MacBook Pro 17" \(Model A1261\) Left Fan](#) (1)

## Step 1 — Battery



- Use your fingers to push both battery release tabs away from the battery and lift the battery out of the computer.

## Step 2 — RAM Shield



- Remove the four identical Phillips 3.4 mm screws from the memory door. These screws have 4 mm

diameter heads rather than the 3 mm heads on the body screws.

### Step 3



- Lift the memory door up enough to get a grip on it, and slide it toward you, pulling it away from the casing.

### Step 4 — Upper Case



- Remove the three Phillips screws in the battery compartment near the latch. Apple was nice enough to tilt these screws at a slight angle to make them easier to remove. On the A1261 these screws have 4 mm diameter heads rather than the 3 mm heads on the body screws.



## Step 5



- Remove the following six screws:
  - Two 14.5 mm T6 Torx screws on either side of the RAM slot.
  - Four 3.4 mm Phillips screws along the hinge.

## Step 6



- Remove the four 3.4 mm Phillips screws on the port side of the computer.

## Step 7



- Rotate the computer 90 degrees and remove the two Phillips screws from the rear of the computer.

## Step 8



- Rotate the computer 90 degrees again and remove the four Phillips screws from the side of the computer.

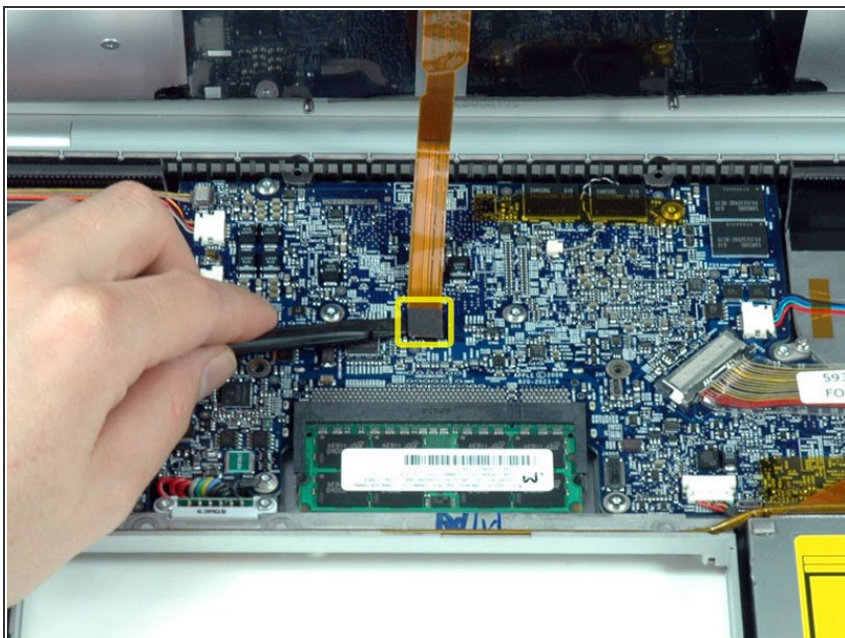
## Step 9



**⚠ Do not yank the upper case off quickly. The case is attached to the logic board via a ribbon cable.**

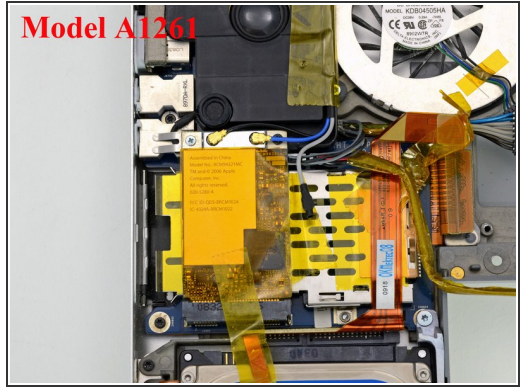
- Lift up the back of the case and work your fingers along the sides, freeing the case as you go. Once you have freed the sides, you may need to rock the case up and down to free the front of the upper case.

## Step 10



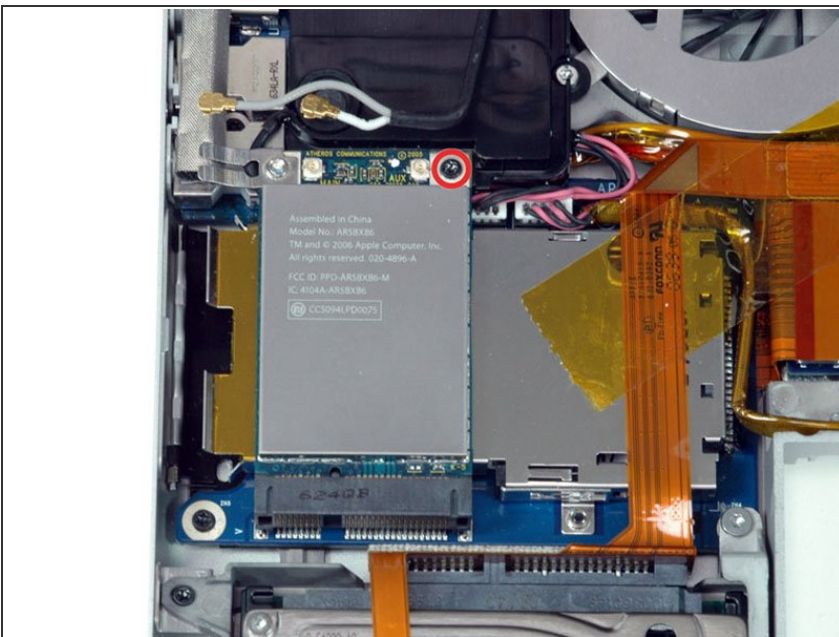
- Disconnect the trackpad and keyboard ribbon cable from the logic board.
- Remove the upper case.

## Step 11 — AirPort Extreme



- Disconnect the two antenna cables attached to the AirPort Extreme card.
- ☑ The cable with the gray shielding attaches to the left side connector, while the cable with the white shielding attaches to the right side.
- ⓘ If you have a MacBook Pro 17" Model A1229 or A1212, there are three antenna cables attached to the AirPort Extreme card instead of two.
- ⓘ If you have a MacBook Pro 17" Model A1261 the cable with the black shielding attaches to the left side of the connector, while the cable with blue shielding attaches to the right side.

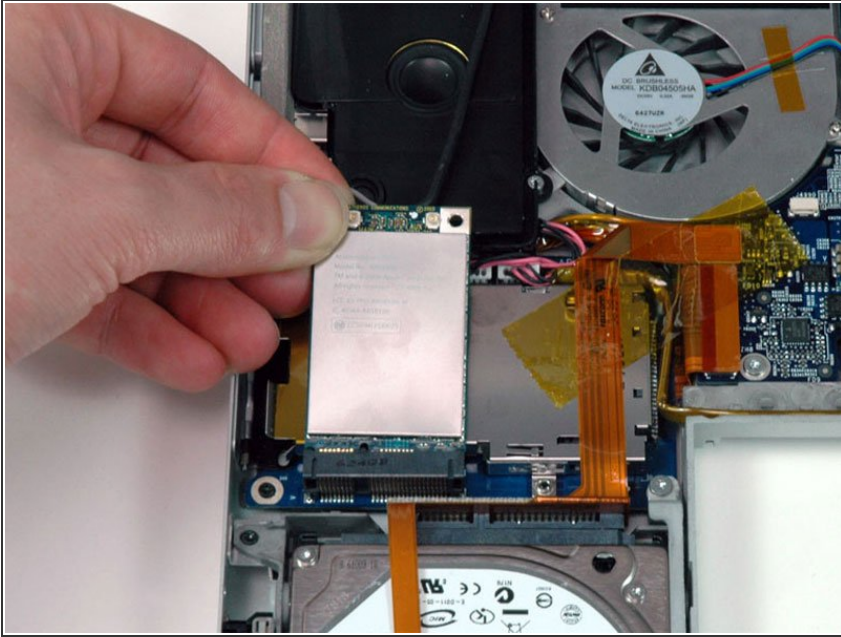
## Step 12



- Remove the single black T6 Torx screw from the top right corner of the AirPort Extreme card.

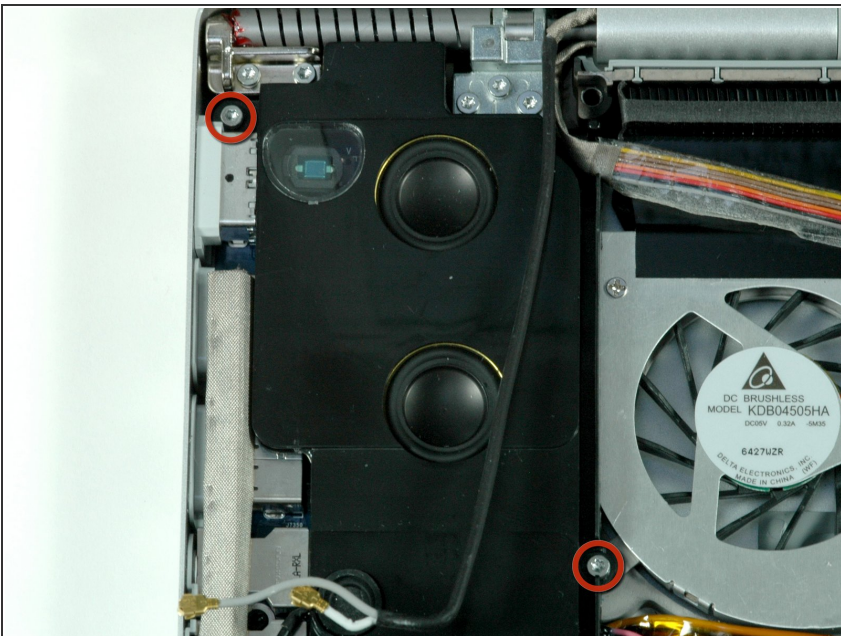


## Step 13



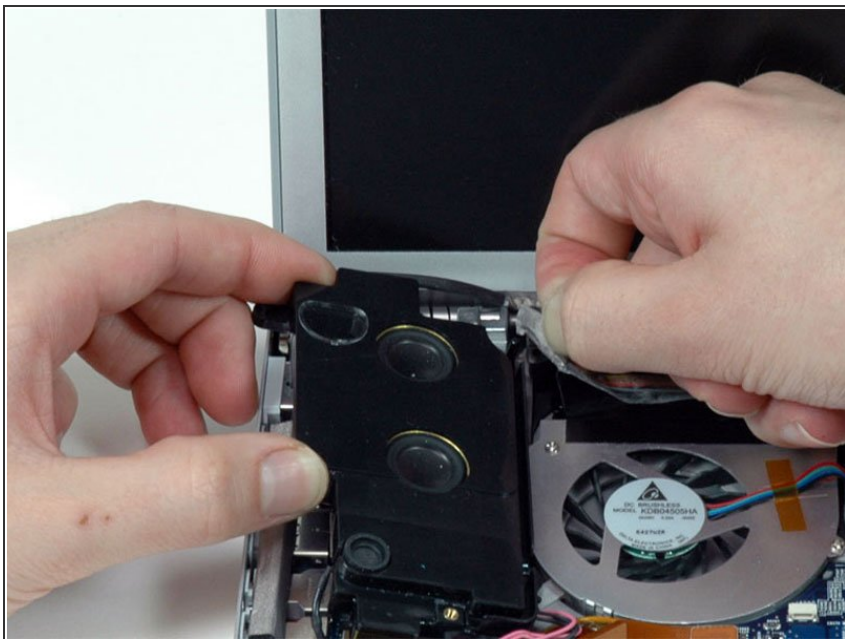
- Lift the AirPort Extreme card up and slide it out of its connector.
- ⓘ Note the position of the grounding clip attached to the left side of the card. On some models, the clip is mounted on the upper surface of the airport Extreme card to make contact with the upper case. On other models, the clip is mounted on the underside and makes contact with the headphone connector body.

## Step 14 — Left Fan



- Remove the two silver T6 Torx screws from the top left and bottom right corners of the left speaker assembly.
- ⓘ The magnet in the MagSafe connector may pull the upper screw towards it after the screw has been freed.

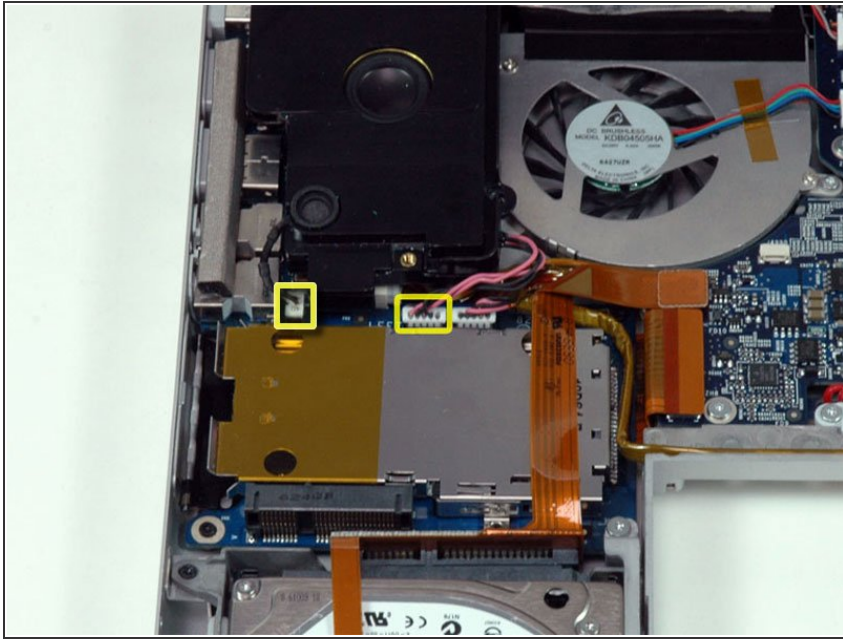
## Step 15



- Lift up the left speaker assembly with one hand and deroute the inverter cable from the top right corner of the speaker assembly.
- ⓘ On model A1261 the speaker can be carefully pivoted by derouting the inverter cable.

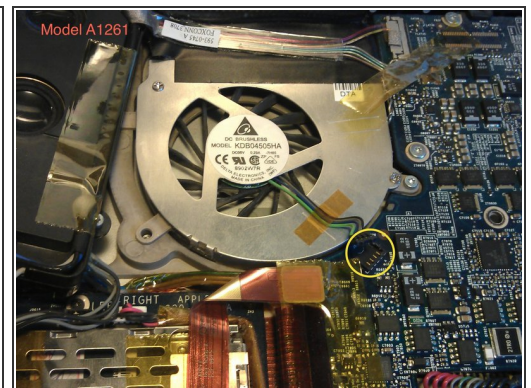
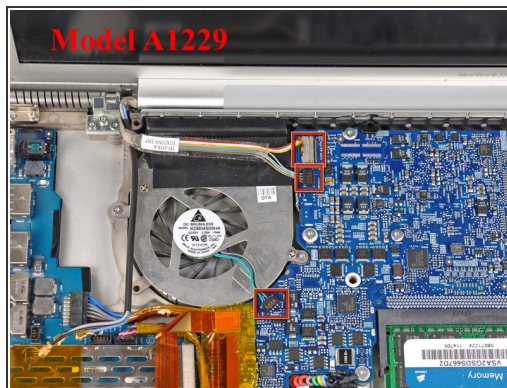
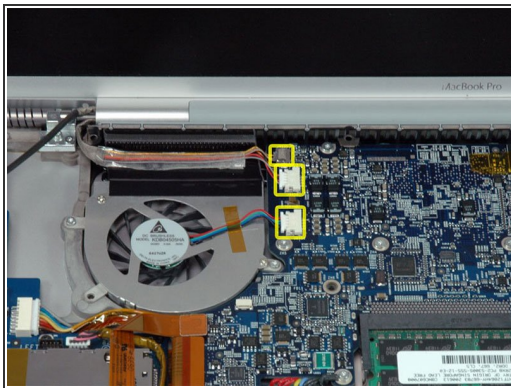


## Step 16



- Disconnect the pink and black left speaker assembly cable from the left I/O board. Be sure to pull only on the white connector and not on the speaker wires.
- Disconnect the microphone cable connector from the left I/O board.
- Remove the left speaker/microphone assembly from the lower case.

## Step 17

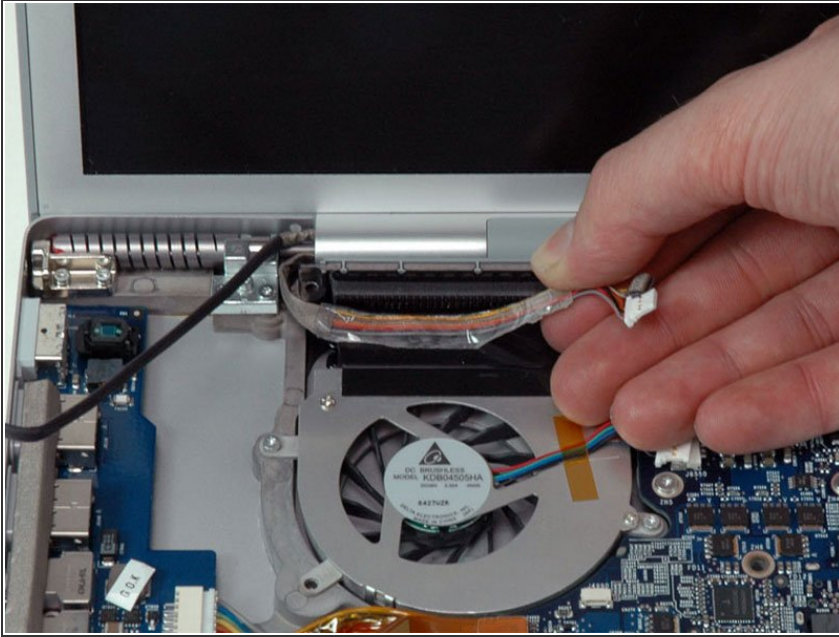


- Disconnect the iSight, inverter, and left fan cables from the left side of the logic board.

**⚠ Take care not to dislodge the EMI gasket on the silver iSight connector.**

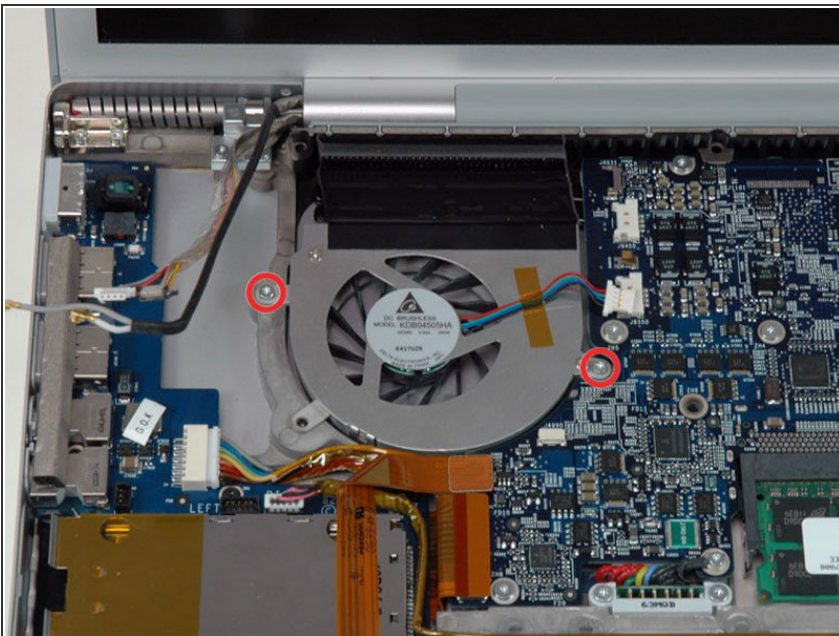
- i** If you have a MacBook Pro 17" Model A1229, the iSight, inverter, and left fan cables have different composites and locations.
- i** For model A1261, the fan cable is located in the same location as the model A1229, 5 o'clock to the fan. The iSight and inverter can remain connected. Lift the tape from the top of the fan and make sure to check the connections afterward.

## Step 18



- Peel up the iSight and inverter cables which are attached with a mild adhesive above the left fan.
- ⓘ The iSight and inverter cable can optionally remain connected.

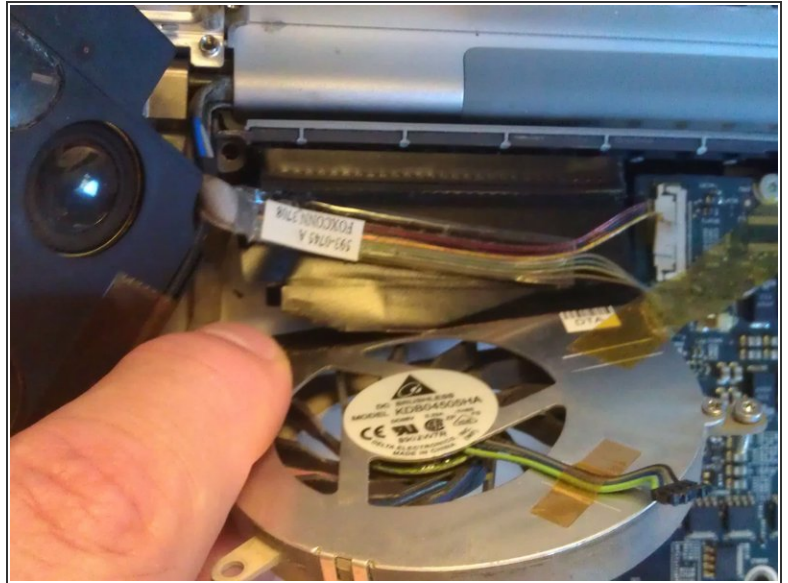
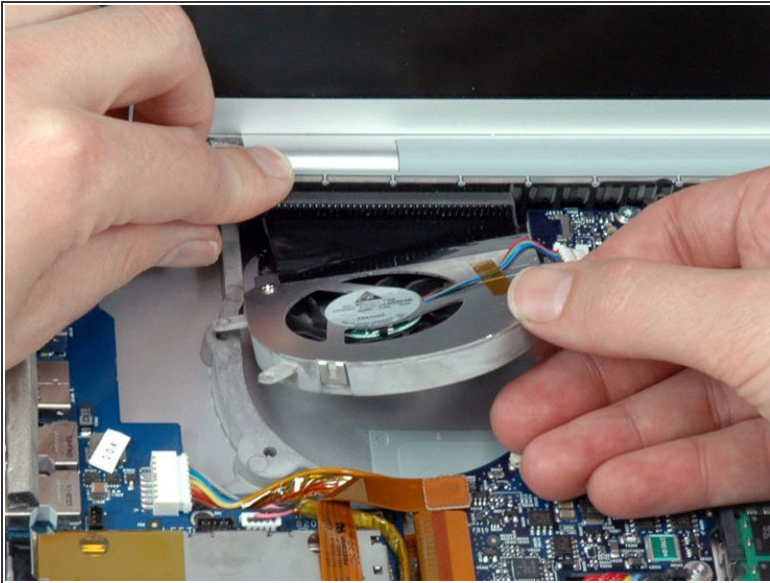
## Step 19



- Remove the two silver T6 Torx screws securing the left fan to the lower case.



## Step 20



- Lift the left fan and its metal bracket out of the computer.
- ⓘ The tape that covers the top of the fan can be reused if the fan is removed carefully. Pivot the fan towards the screen and very slowly pull bottom of the fan away from the tape from left to right. It should peel off without stretching if done slowly. Then slide the new fan under the tape and press the tape back on the top of the fan.

To reassemble your device, follow these instructions in reverse order.