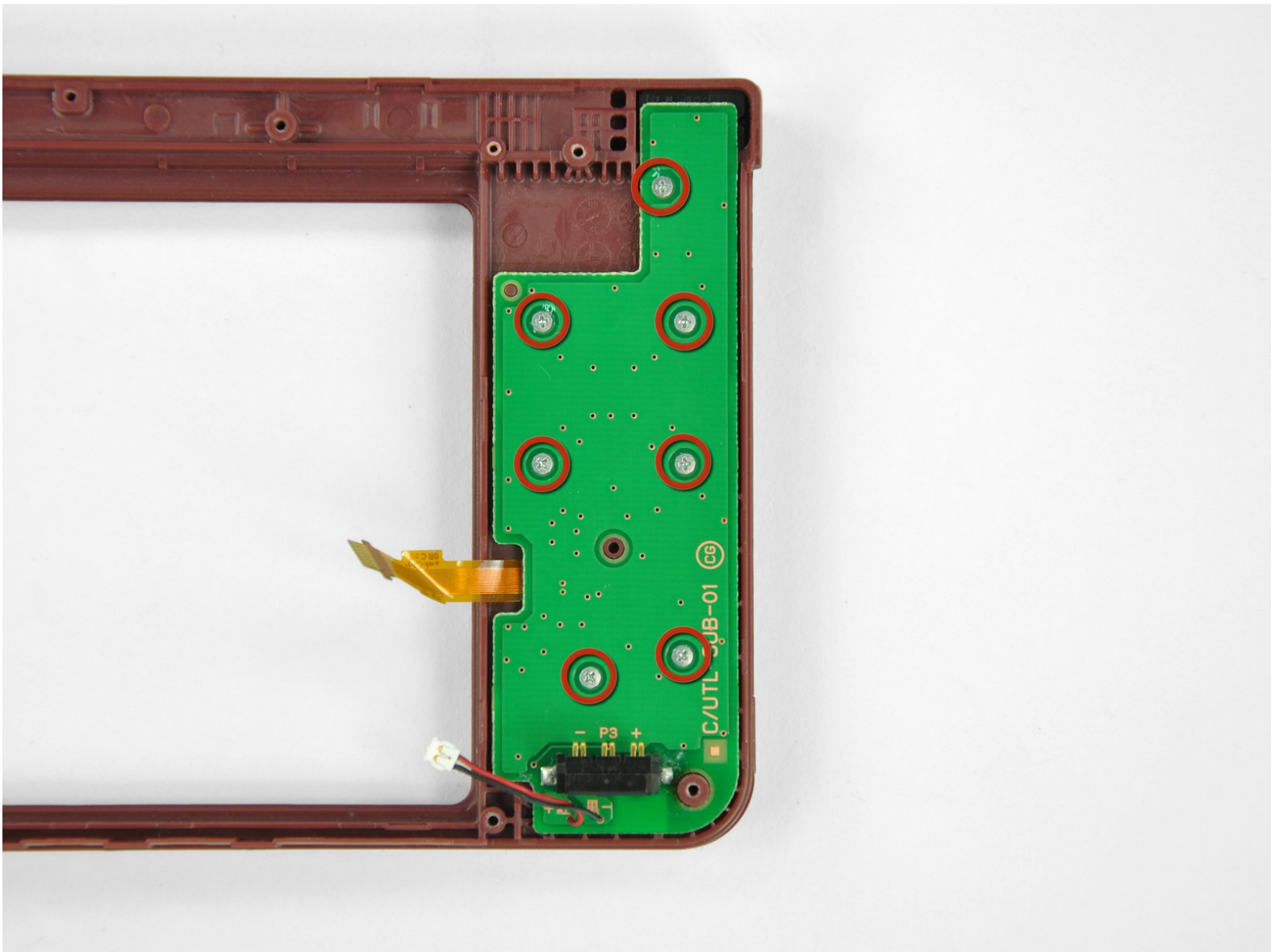




# Nintendo DSi XL Upper Case Replacement

Replacing the upper case.

Written By: Brett Hartt



# INTRODUCTION

Customize the color of your DSi XL by replacing the upper case.



## TOOLS:

- [Phillips #00 Screwdriver](#) (1)
- [Push Pin](#) (1)
- [Spudger](#) (1)



## PARTS:

- [Nintendo DSi XL Outer Shell](#) (1)

## Step 1 — Battery



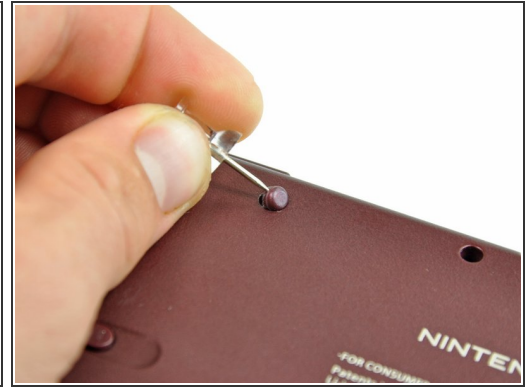
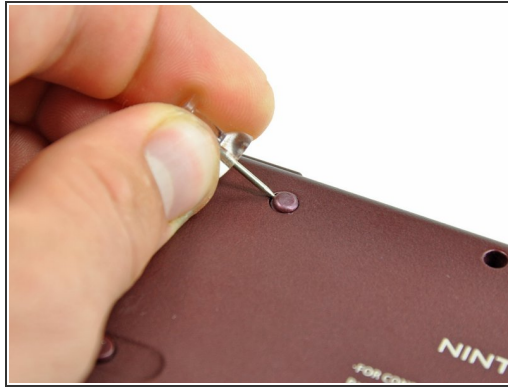
- Remove the two Phillips screws securing the battery cover to the back of the handheld console.
- Lift the battery cover off the back of the DSi XL.

## Step 2



- Lift the battery from the DSi XL.

## Step 3 — Lower Case



- Remove the four rubber screw covers on the lower case by prying them up with a push pin.

## Step 4




- Remove the following seven Phillips screws that secure the lower case to the rest of the DSi XL:
  - Four silver 5.3 mm screws
  - Two black 5.3 mm screws
  - One black 2.5 mm screw



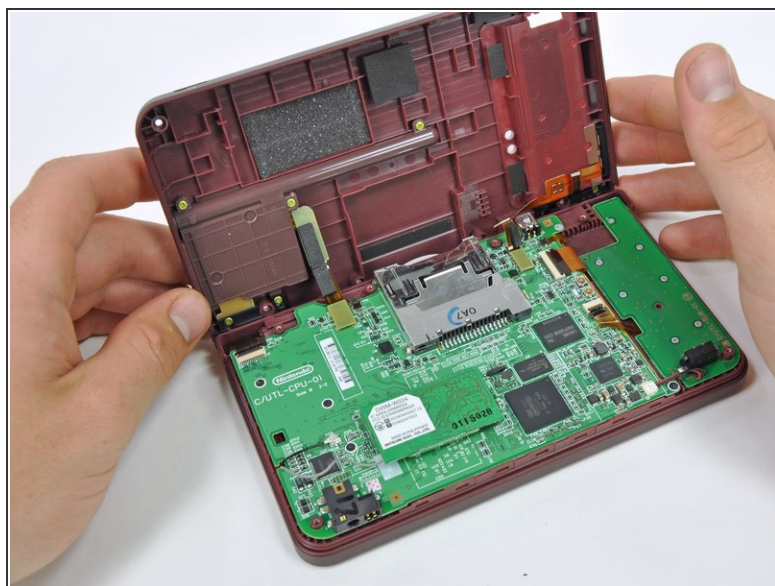
## Step 5



 Turn the DSi XL over, and open the display.

- Insert a spudger between the upper and lower case at the bottom left corner of the DSi.
- Slide the spudger along the bottom edge of the upper case to release the latches securing the upper case to the lower case.

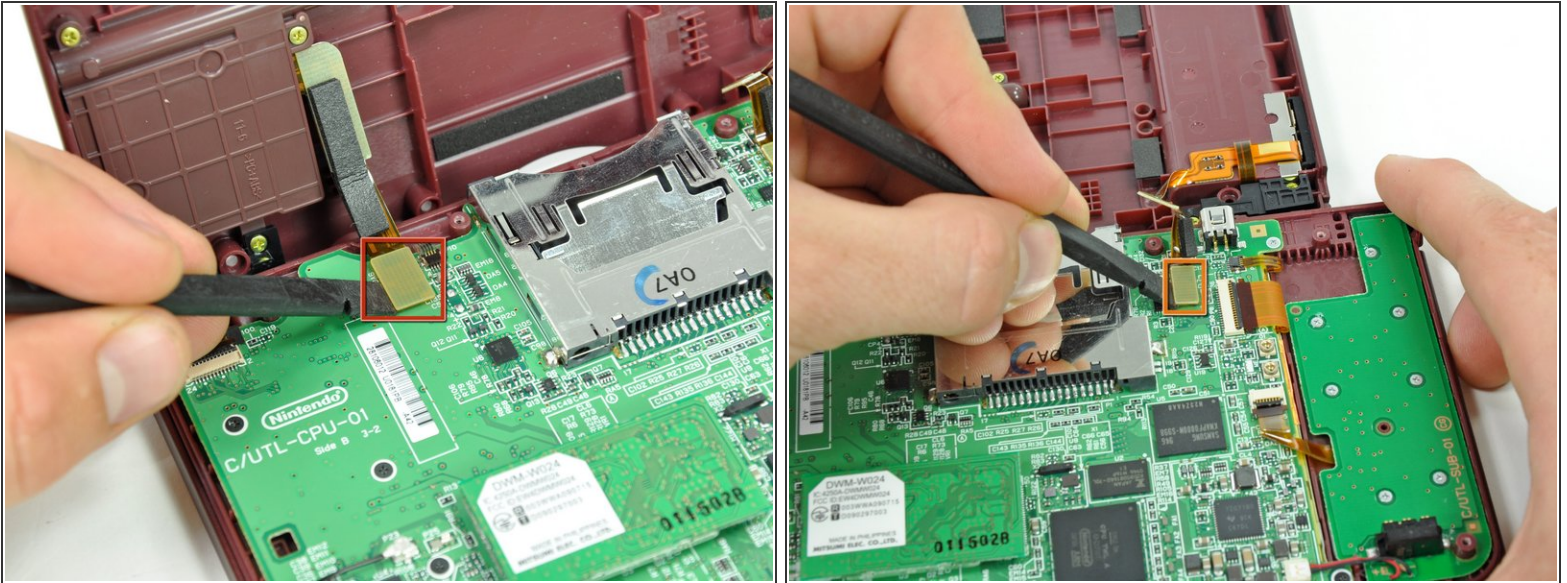
## Step 6



- i** Close the display and turn the DSi XL over.

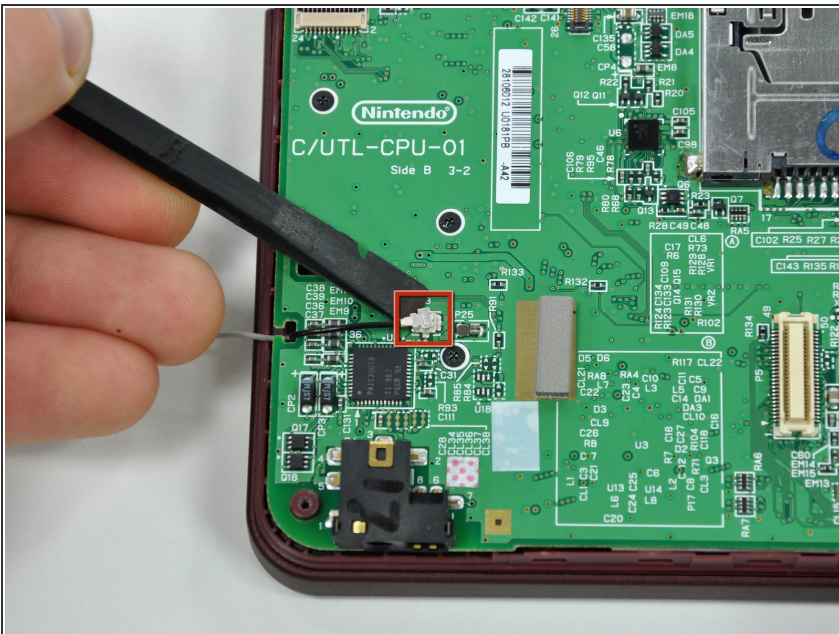
  - Lift the lower case from the front edge.
  - Rotate the lower case away from the DSi.
- i** The lower case cannot be completely removed yet, since it is still connected to the motherboard.

## Step 7



- Using a spudger, pry the SD card/right shoulder button connector off its socket.
- Pry the volume button/left shoulder button connector off its socket on the motherboard with a spudger.

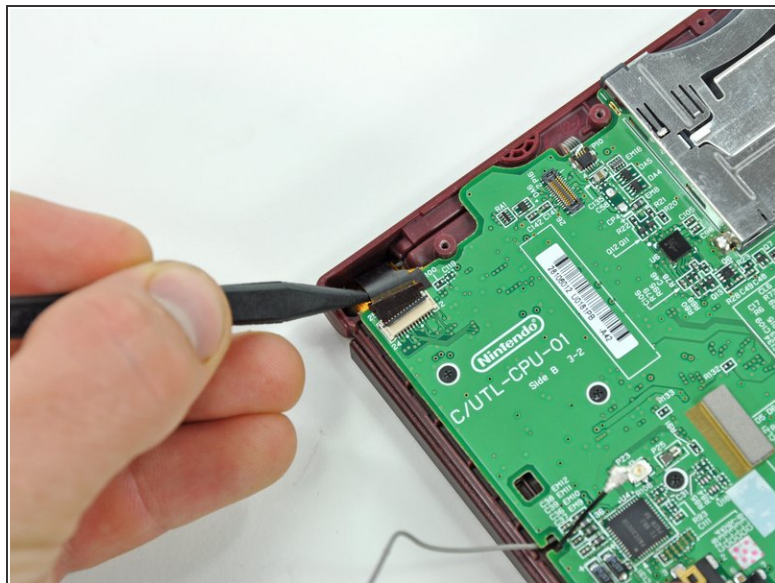
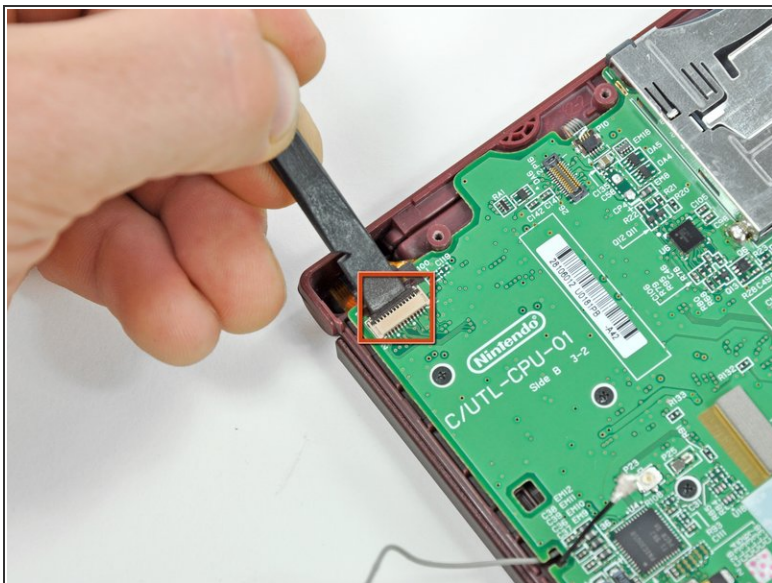
## Step 8 — Motherboard



- Use a spudger to pry the microphone cable off the motherboard.
- ⓘ Pry from underneath the cable.



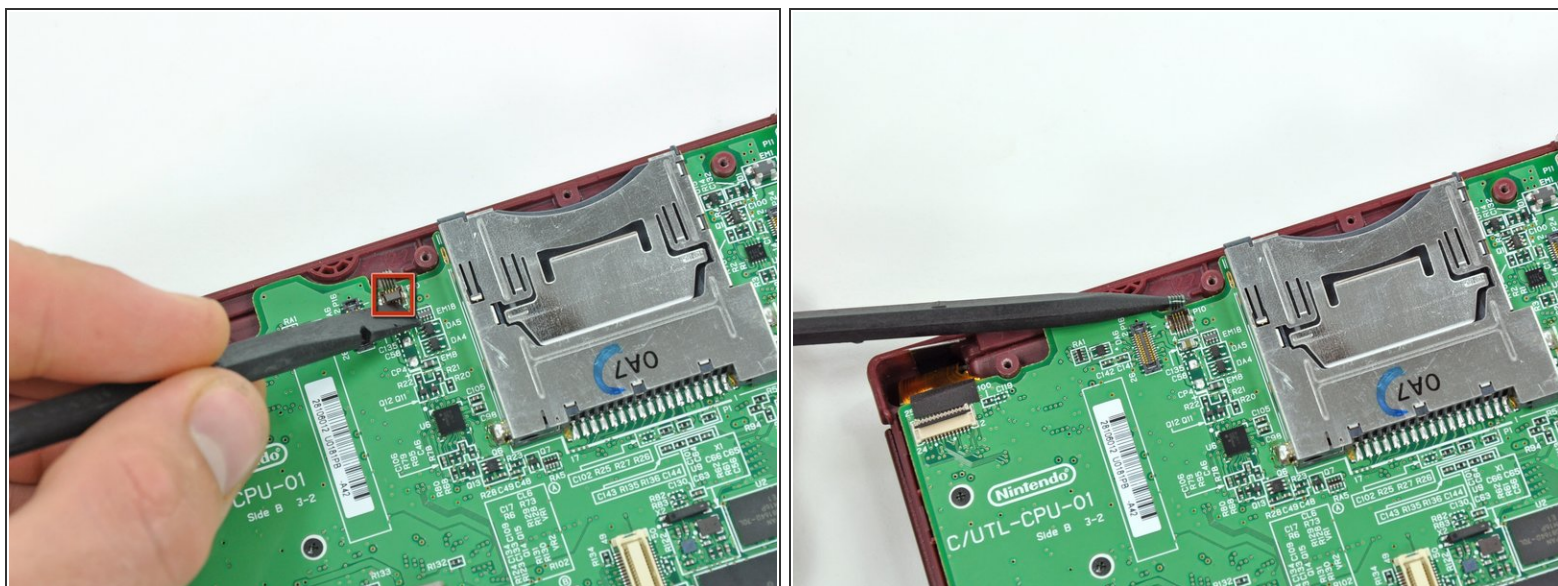
## Step 9



- Using the flat end of a spudger, flip up the retaining flap on the camera ribbon ZIF connector.
- Use the pointed end of a spudger to pull the camera ribbon from the ZIF connector.

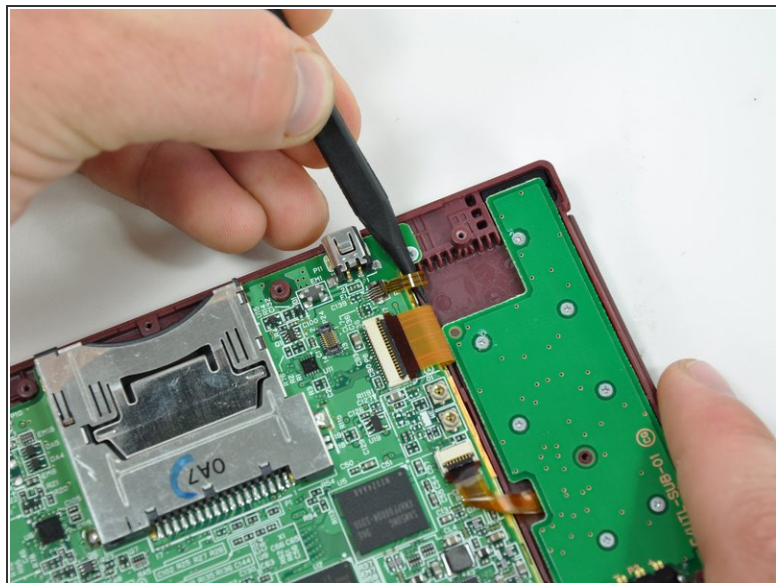
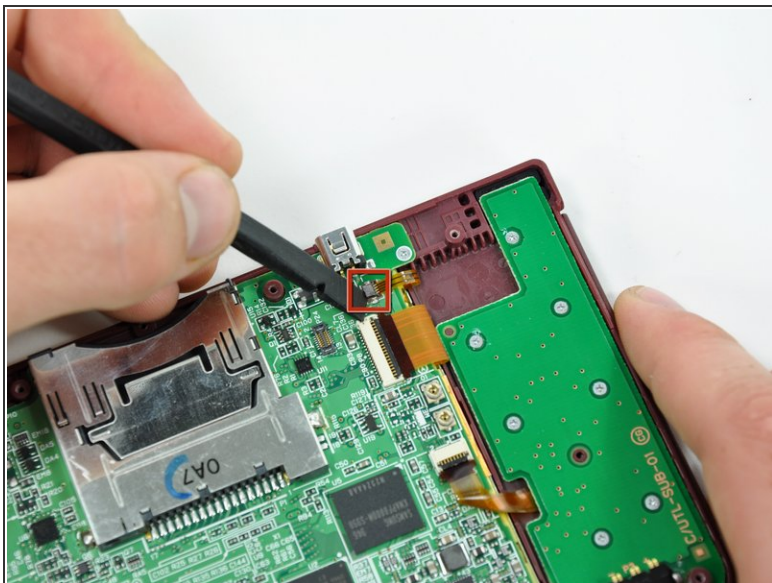


## Step 10



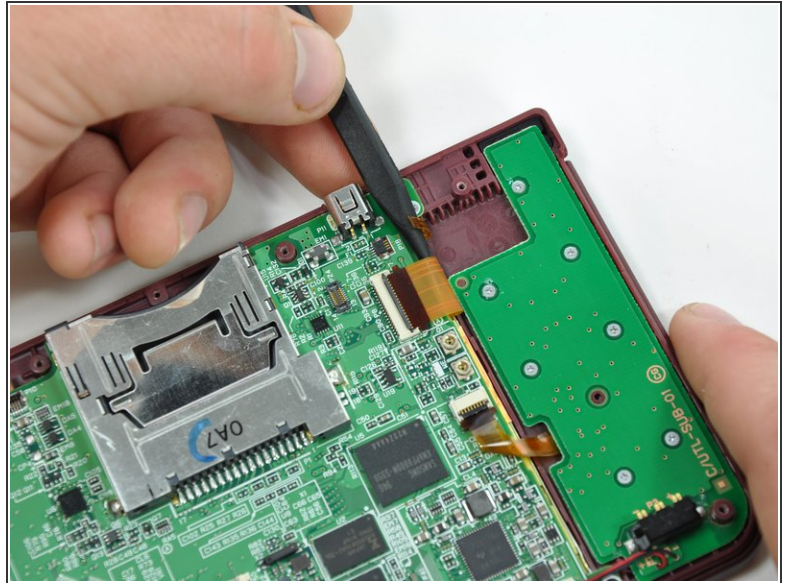
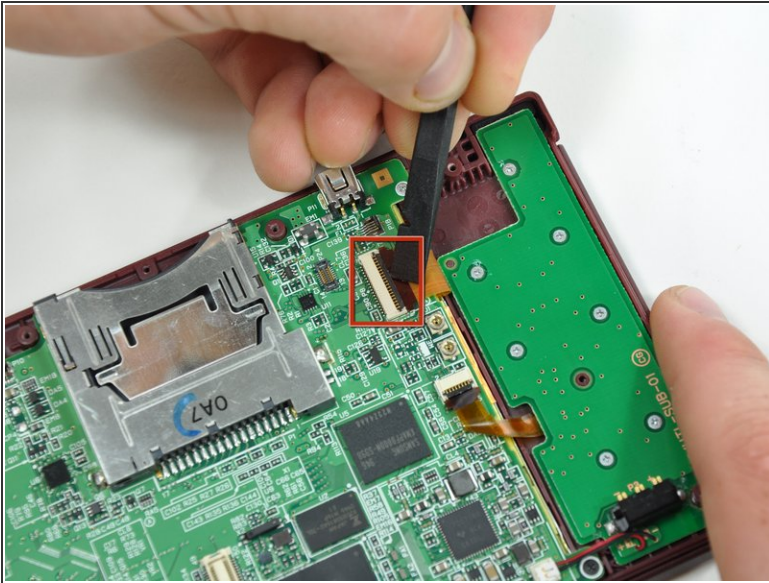
- Using the flat end of a spudger, flip up the retaining flap on the touchscreen cable ZIF connector.
- With the pointed end of the spudger, pull the touchscreen cable from its connector on the motherboard.

## Step 11



- Using the flat end of a spudger, flip up the retaining flap on the backlight cable ZIF connector.
- With the pointed end of the spudger, pull the backlight cable from its connector on the motherboard.

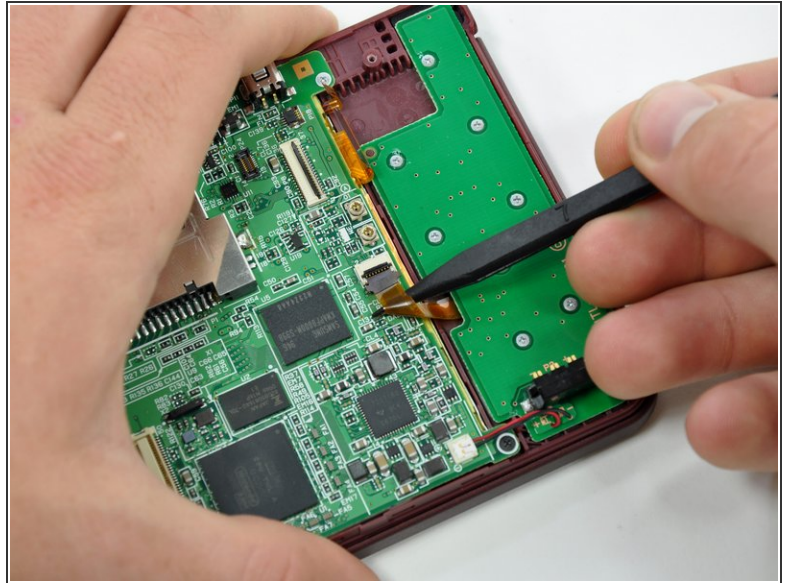
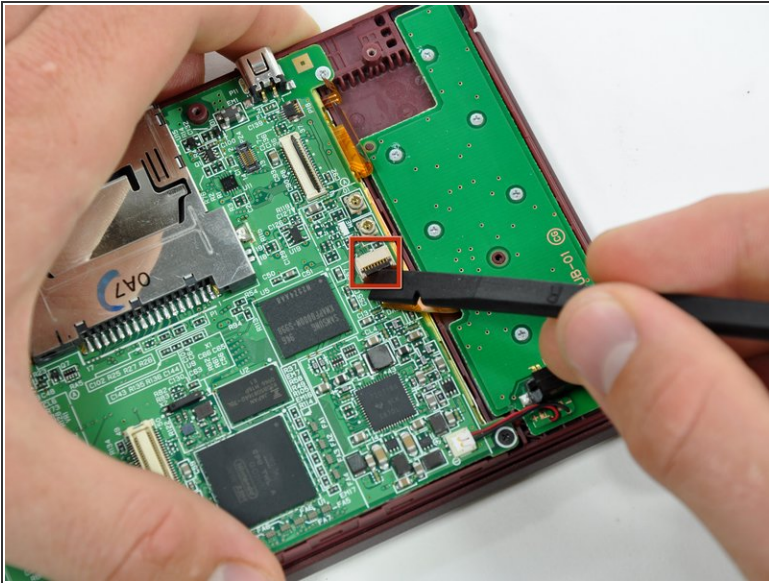
## Step 12



- Using the flat end of a spudger, flip up the retaining flap on the lower display data cable ZIF connector.
- With the pointed end of the spudger, pull the lower display data cable from its connector on the motherboard.

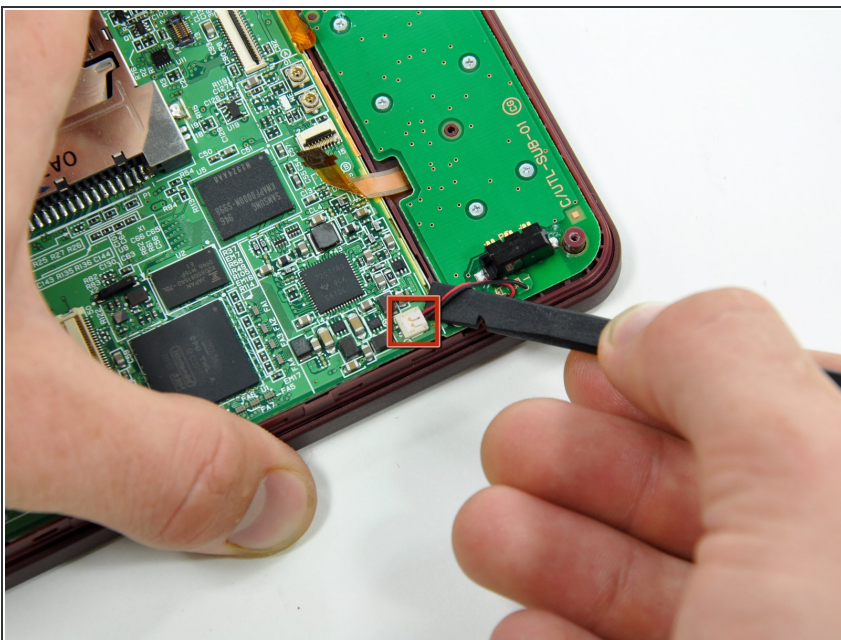


## Step 13



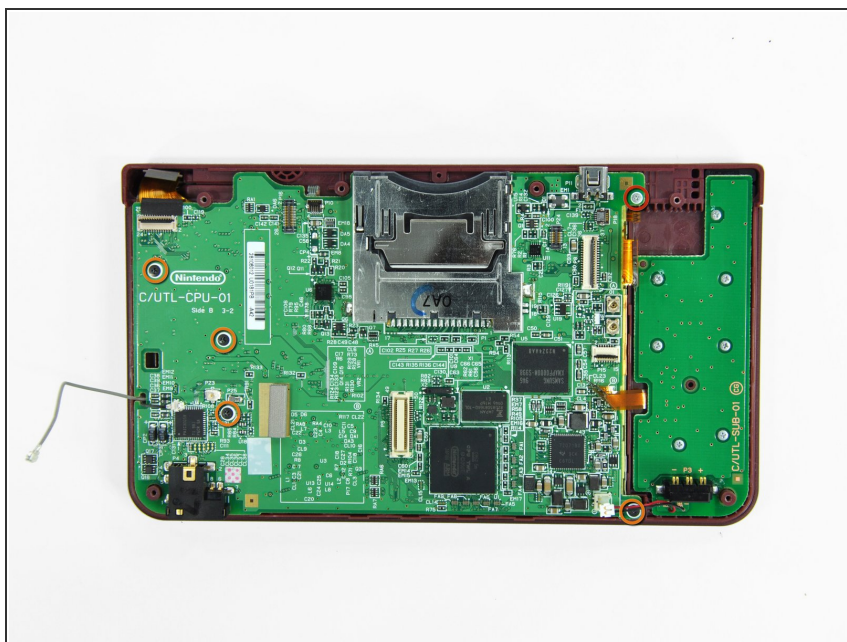
- Using the flat end of a spudger, flip up the retaining flap on the ZIF connector for the D-Pad/power button cable.
- With the pointed end of the spudger, pull the D-Pad/power button cable from its connector on the motherboard.

## Step 14



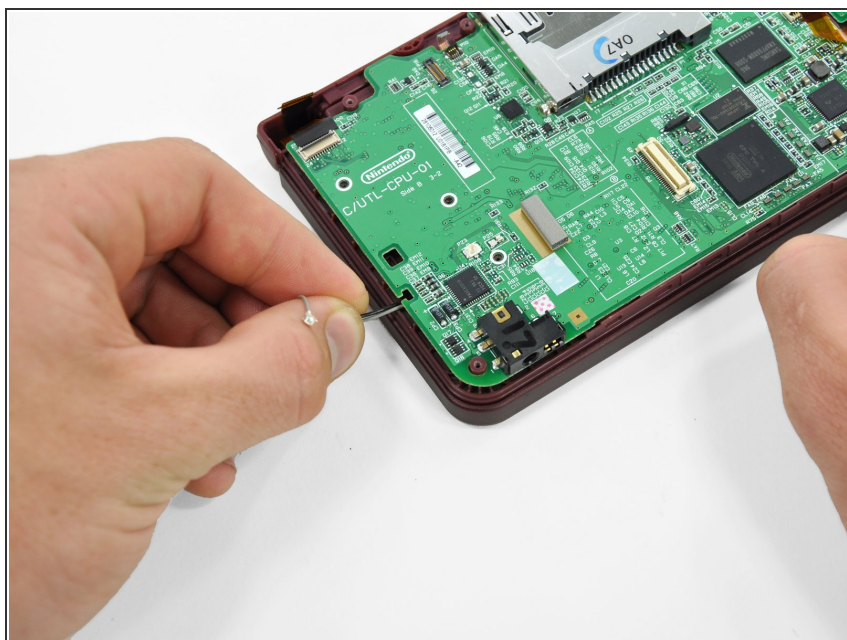
- Using the flat end of the spudger, pry the battery cable up off its socket on the motherboard.

## Step 15



- Remove the screws securing the motherboard to the upper case:
  - A single 2.5 mm silver Phillips screw
  - Four 3.7 mm black Phillips screws

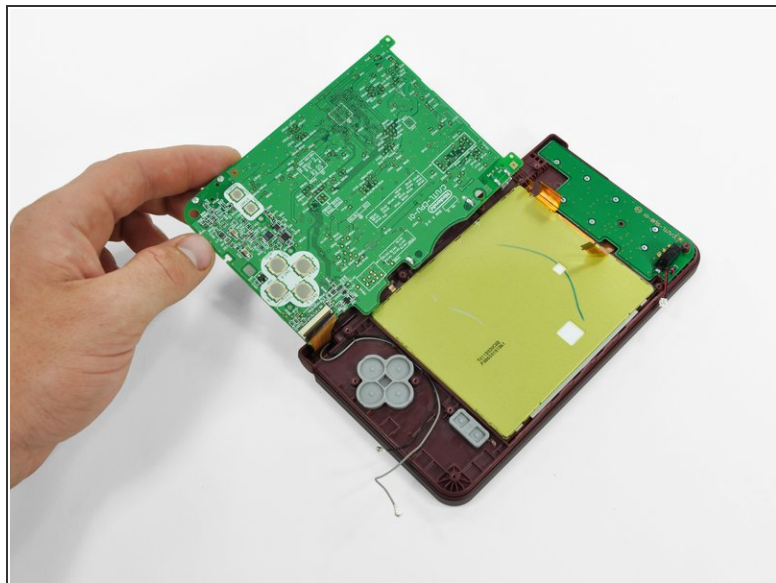
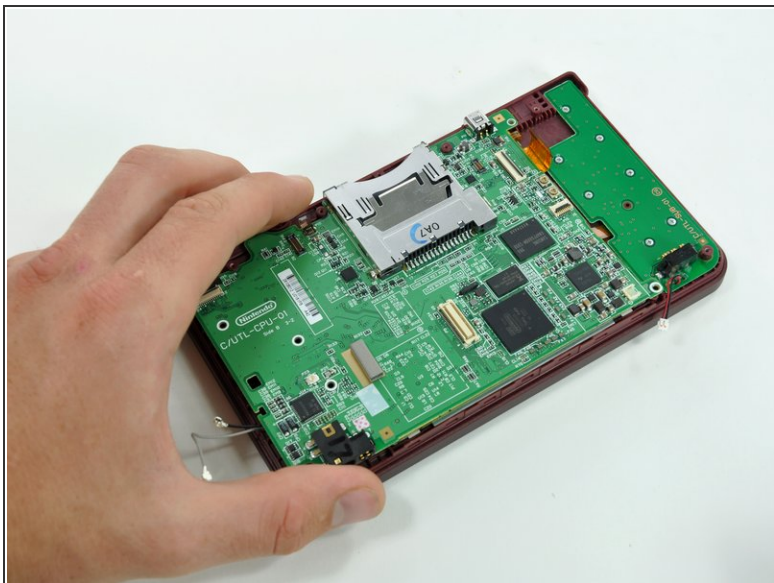
## Step 16



- Deroute the microphone and antenna cables through the slot in the motherboard.



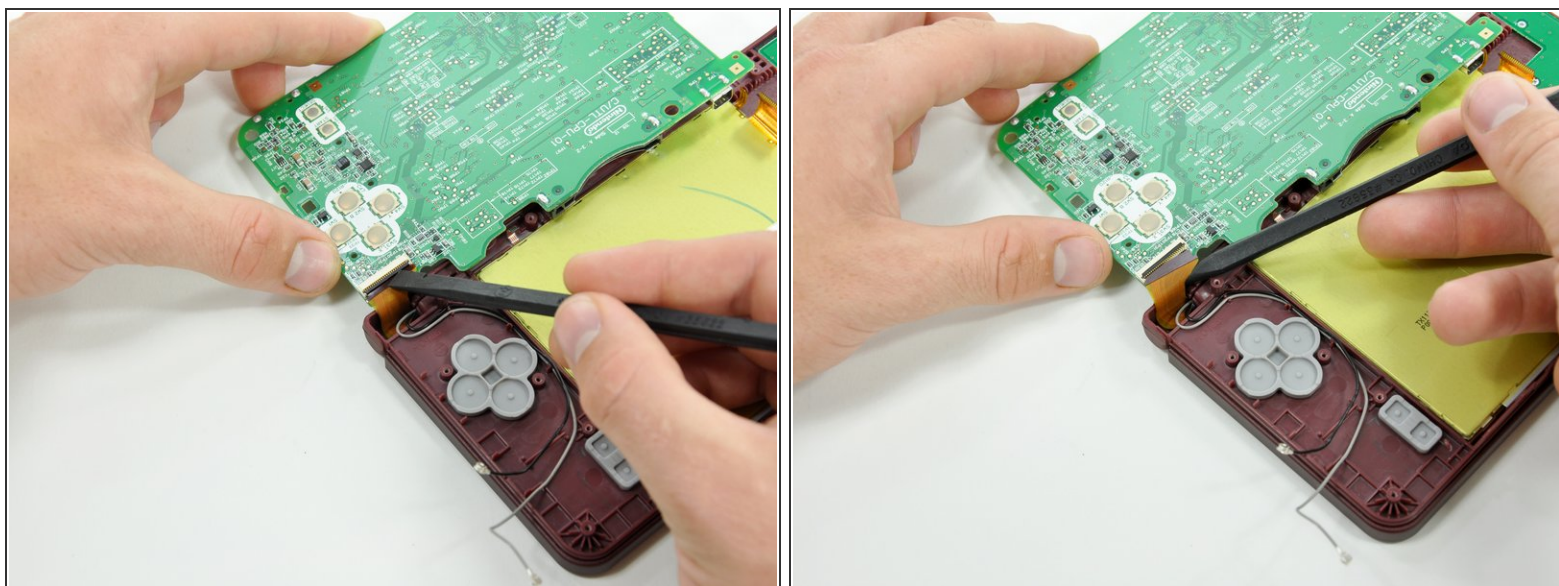
## Step 17



- Rotate the motherboard off the lower case.
- ⓘ The motherboard cannot be completely removed yet. It is still attached by the upper LCD's display data ribbon cable.



## Step 18



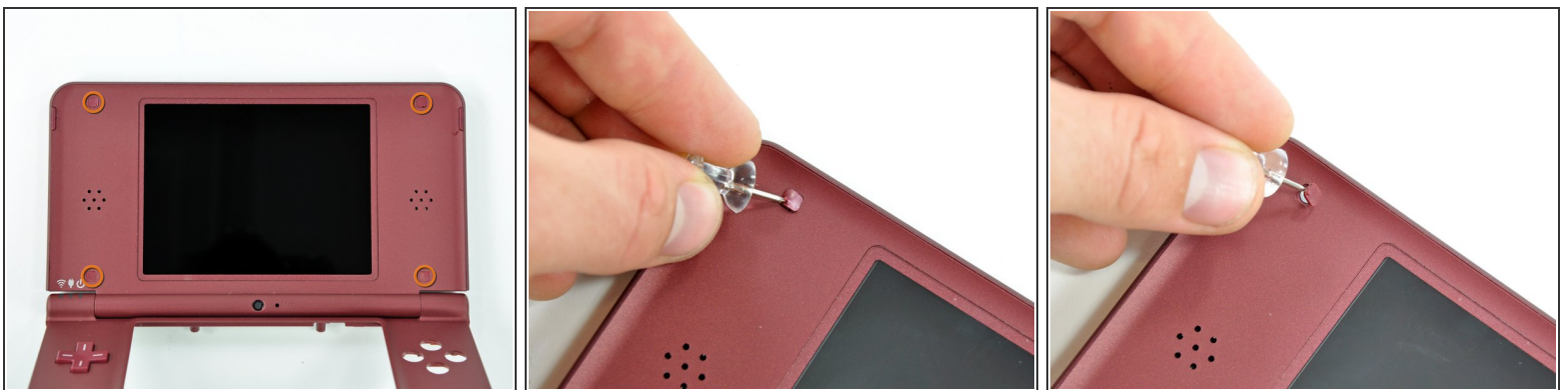
- Using the flat end of a spudger, flip up the retaining flap on the upper display data cable ZIF connector.
  - With the pointed end of the spudger, pull the upper display data cable from its connector on the underside of the motherboard.
- i** The motherboard is now free from the upper case.

## Step 19 — Lower Display Assembly



- With the console still upside-down, open the DSi XL slightly.
- Push the lower display away from the upper case.
- Remove the lower display from the DSi XL.

## Step 20 — Rear Bezel



- Turn the DSi XL over and open the display.
- ☑ When re-assembling the device, be sure to re-install the ABXY and Start/Select buttons, as they are likely to fall out once the handheld console is turned over.
- Use a pushpin to remove the four plastic screw covers on the front bezel.

## Step 21



- Remove the four 3.5 mm silver Phillips screws securing the rear bezel to the front bezel.

## Step 22



- Using two hands, gently slide the rear bezel upwards.

**i** The rear bezel will move only about 2 mm.



## Step 23



- Insert a spudger into the gap between the front and rear bezel.
- Rotate the spudger away from the DSi XL, prying the two bezels apart.

## Step 24




- In the same manner as described above, continue prying along the top edge of the front and rear bezels.

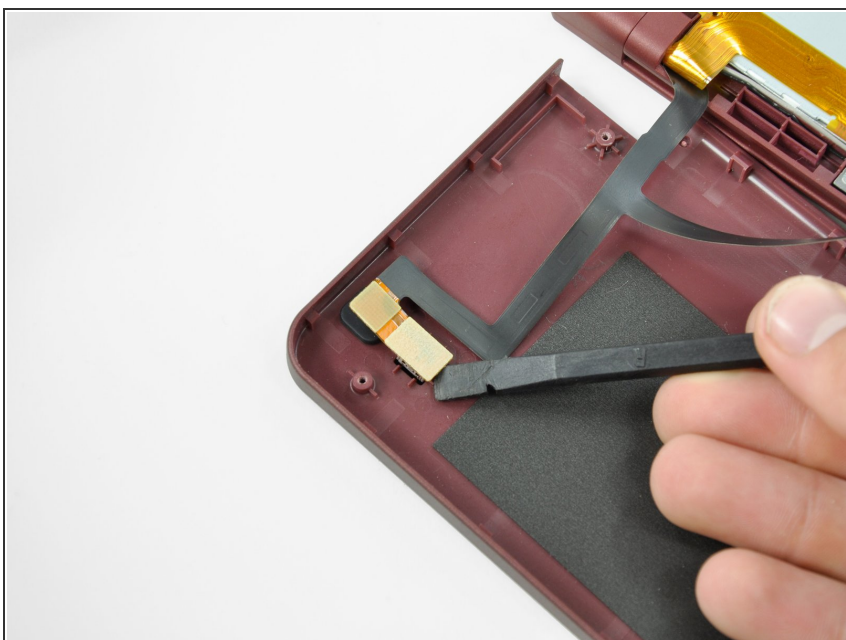
## Step 25



- Separate the rear bezel from the front bezel.

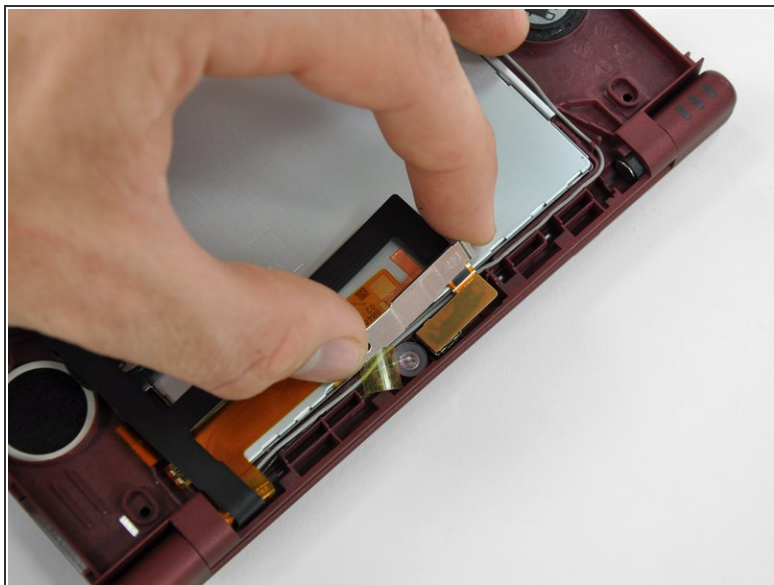
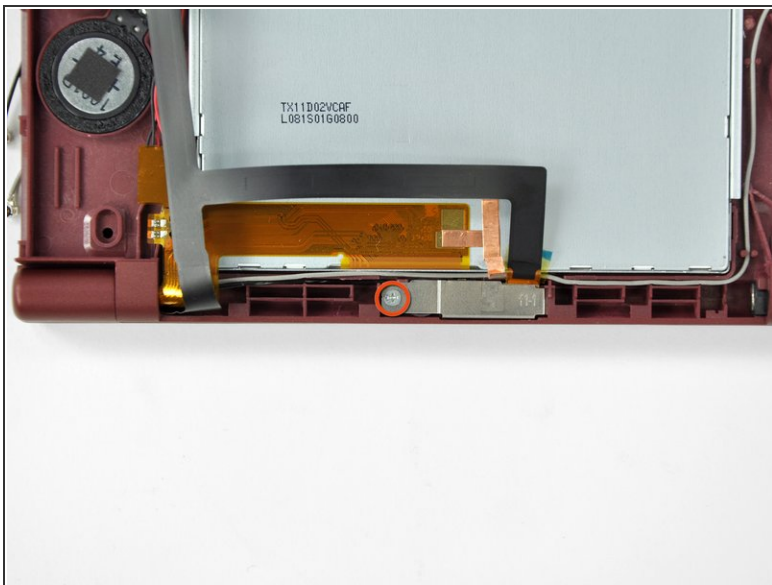
 Do not attempt to completely remove the rear bezel yet. It is still attached to the front bezel by the rear-facing camera.

## Step 26



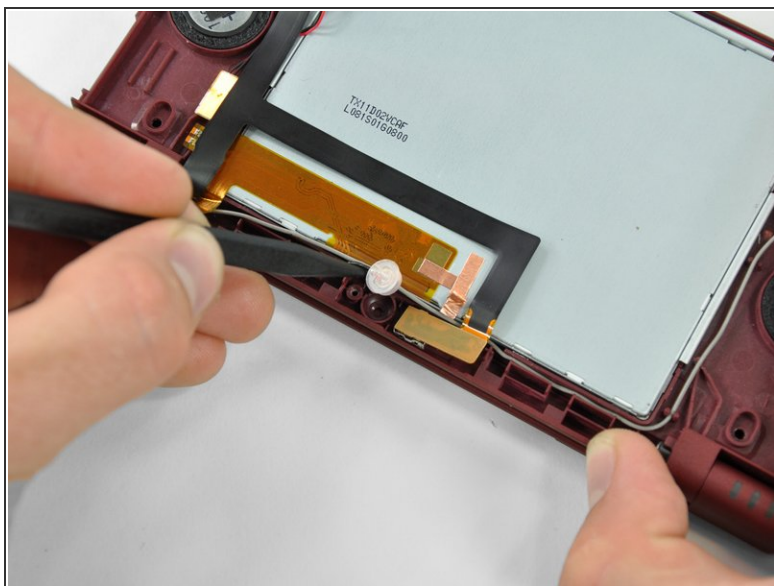
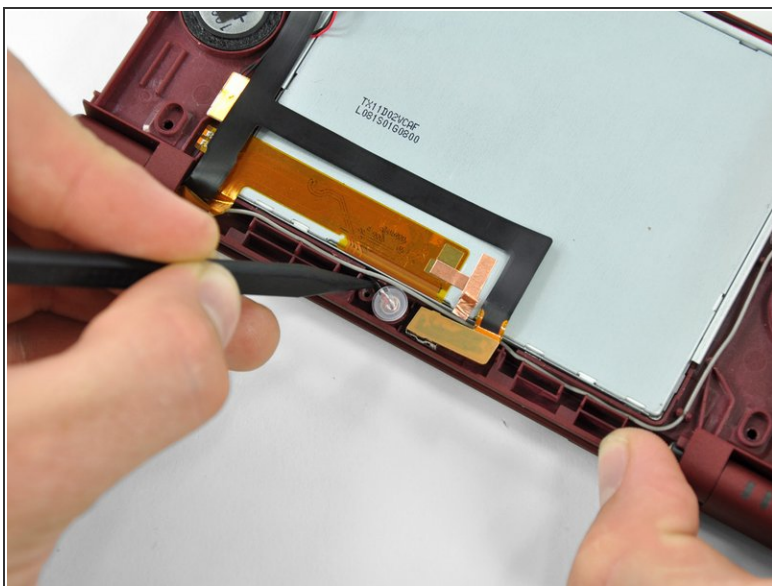
- Using the flat end of a spudger, pry the rear camera off the rear bezel.
- Remove the rear bezel.

## Step 27 — Microphone



- Remove the Phillips screw holding the metal securing bracket in place.
- Lift the metal bracket off the camera.

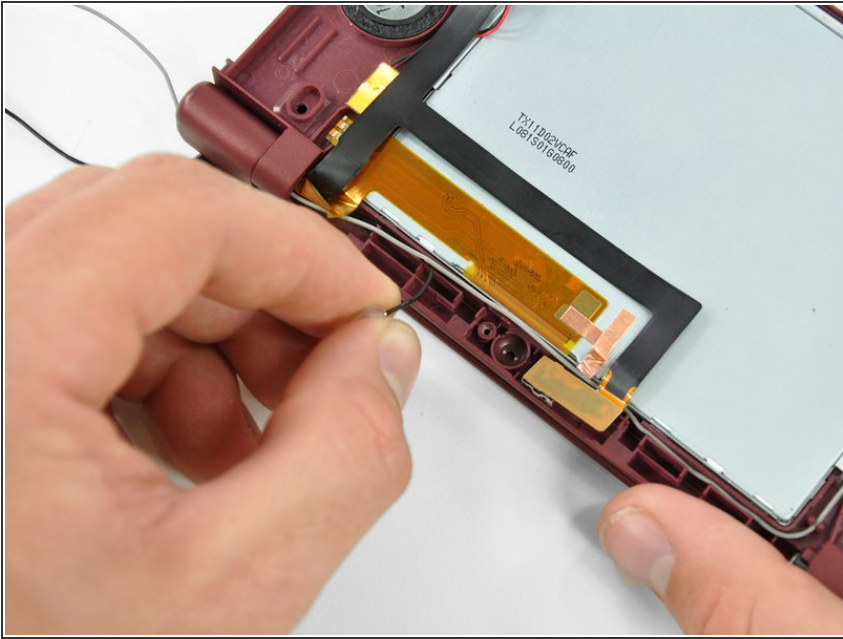
## Step 28



- Use the tip of a spudger to lift the microphone from its seat on the front display bezel.

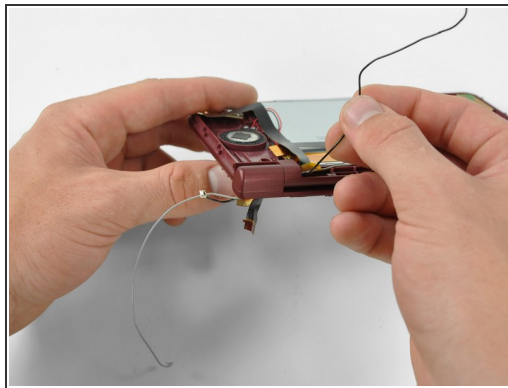
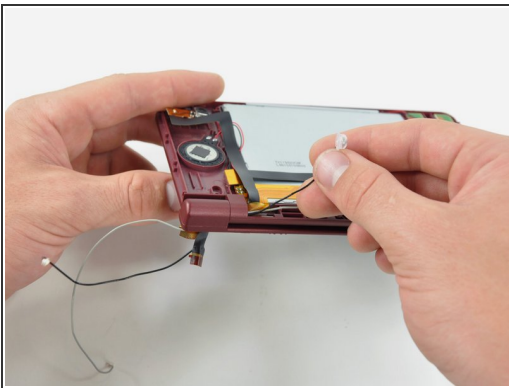


## Step 29



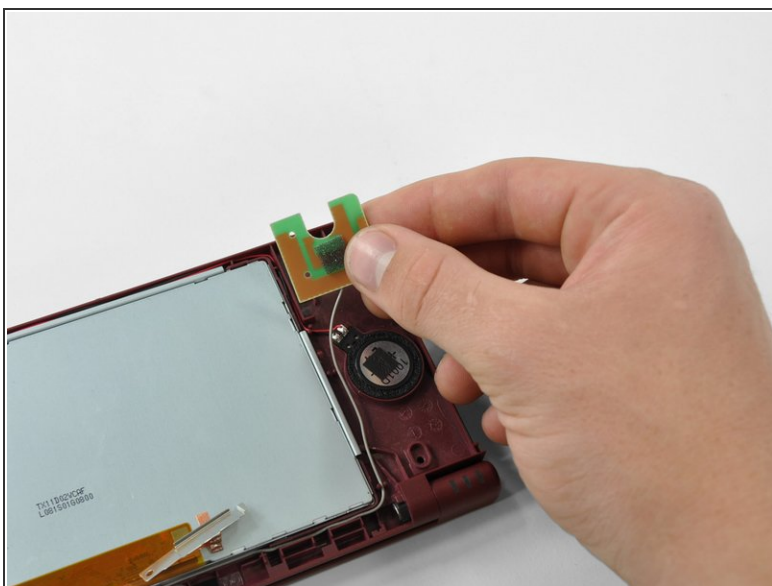
- De-route the microphone cable.

## Step 30



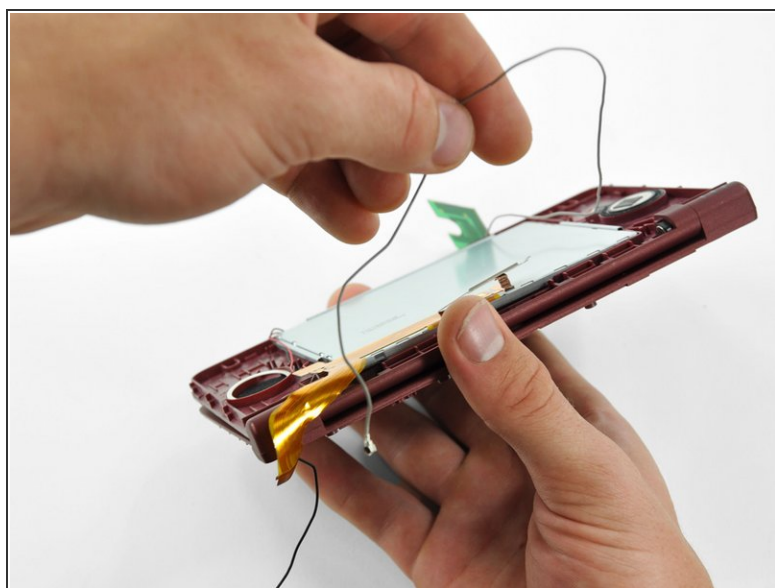
- Pull the microphone cable through the right hinge connecting the front bezel and upper case.
  - Use the pointed end of a spudger to guide the connector at the end of the microphone cable through the hinge.
- ☑ To replace the microphone, use a pair of tweezers to guide the connector through the hinge.

## Step 31 — Wi-Fi Antenna



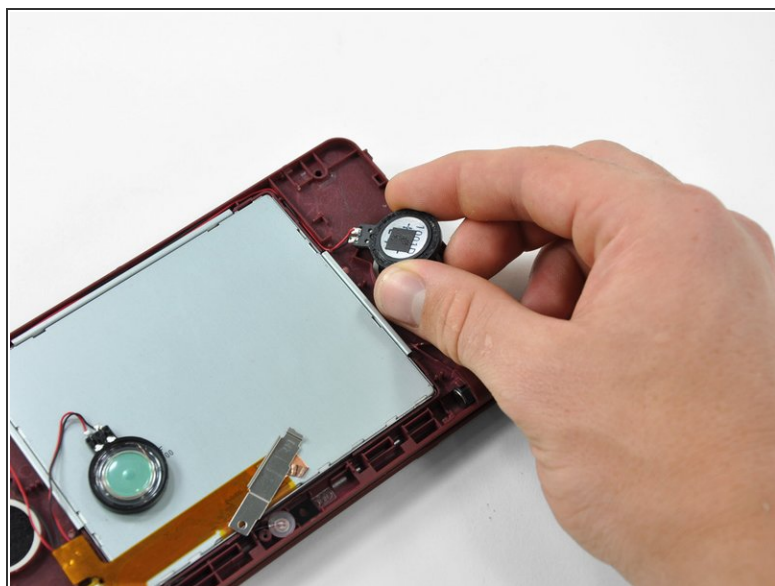
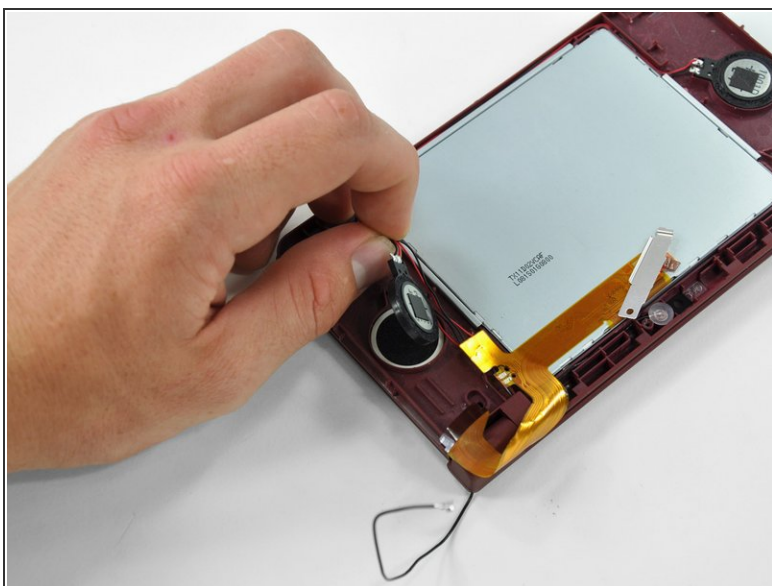
- Lift the Wi-Fi antenna off the front display bezel.
- De-route the Wi-Fi antenna cable from its grooves at the bottom of the front display bezel.

## Step 32



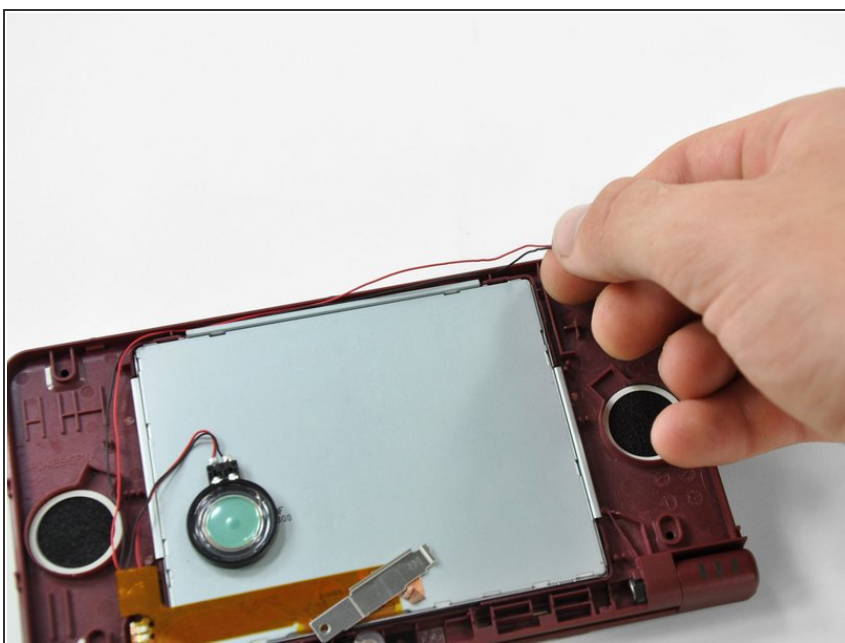
- Pull the Wi-Fi antenna cable through the right hinge connecting the front bezel and upper case.

## Step 33 — Upper Display Assembly



- Lift both of the speakers from their seats on the front display bezel.

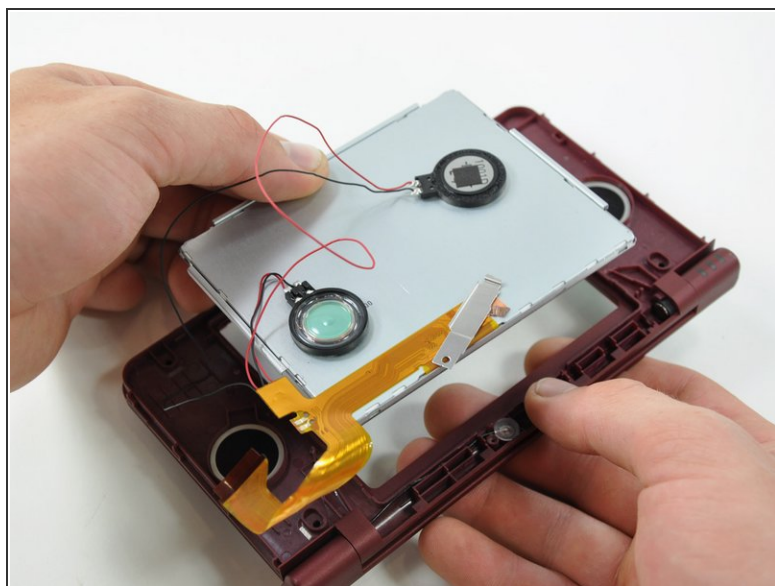
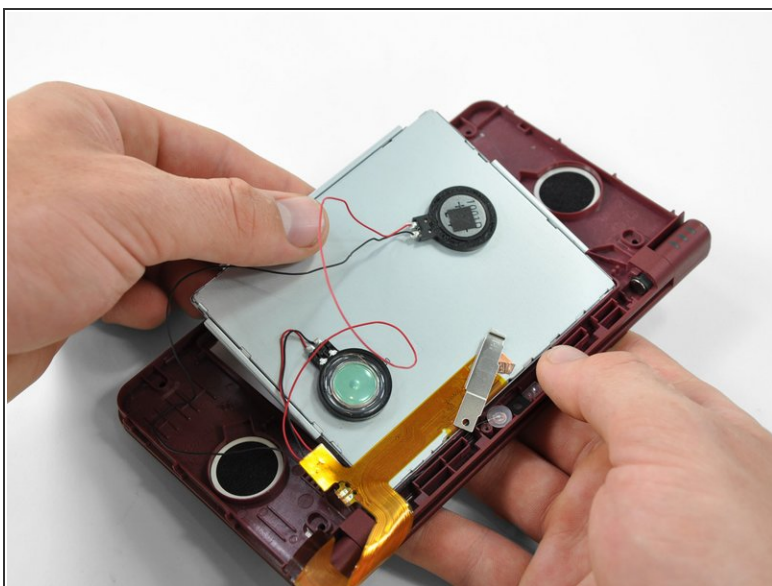
## Step 34



- De-route the speaker wires that run above the upper display screen.

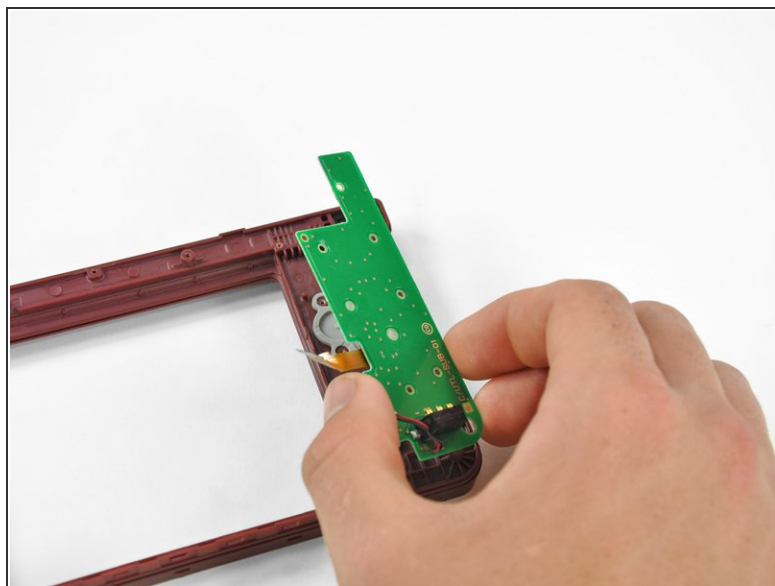
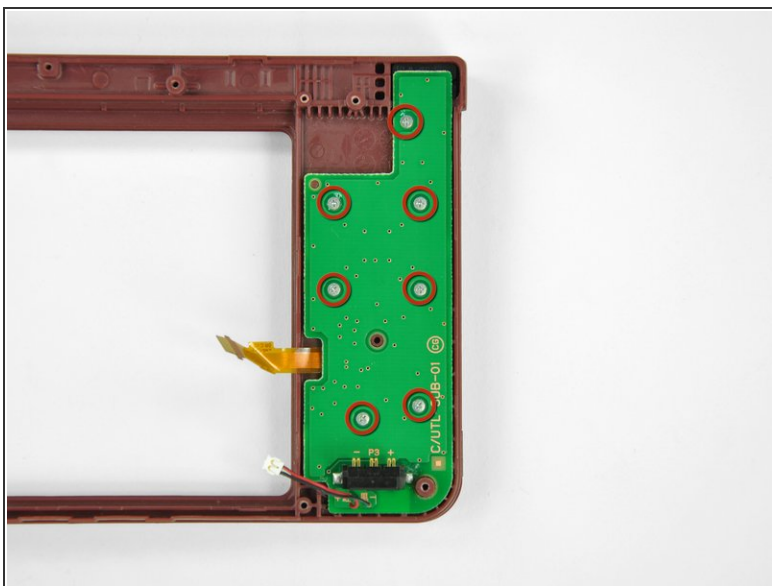


## Step 35



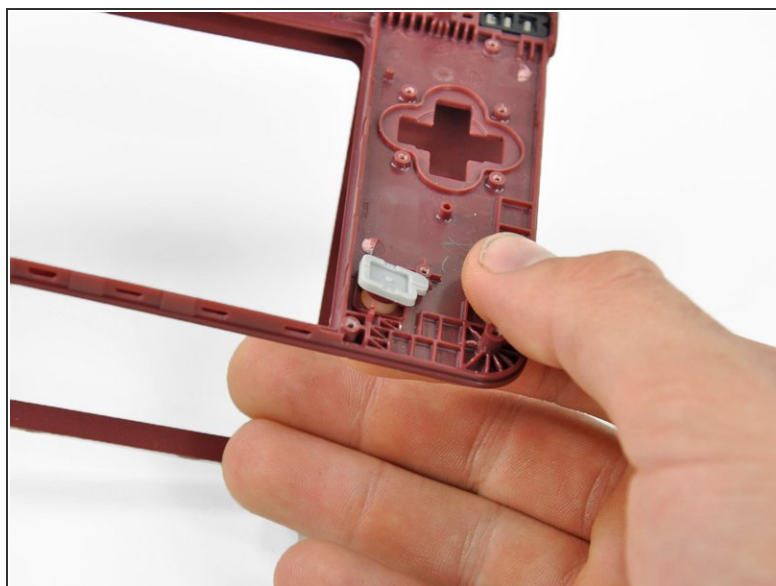
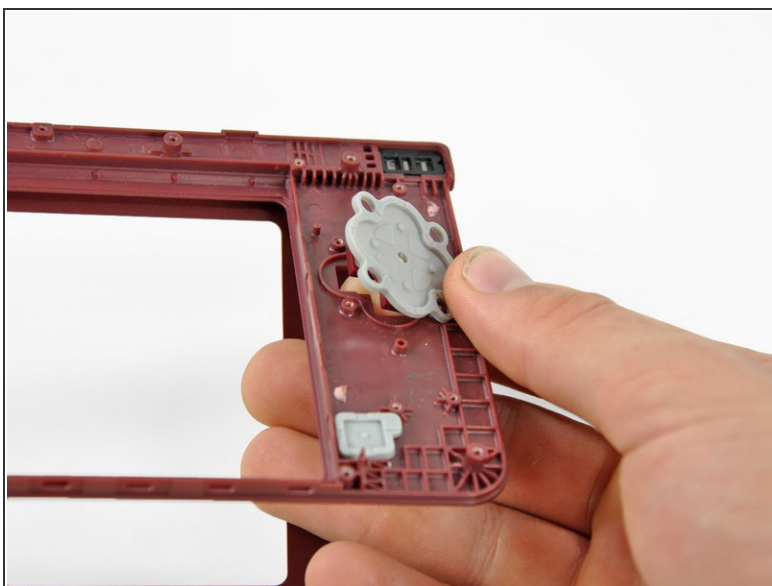
- Remove the upper display assembly.

## Step 36 — Upper Case



- Remove the seven 2.5 mm silver screws securing the power board to the upper case.
- Lift the power board off the upper case.

## Step 37



- Open the case slightly.
- Push the directional pad up through the upper case and remove it from the upper case.
- Push the power button up through the upper case, and remove it from the upper case.

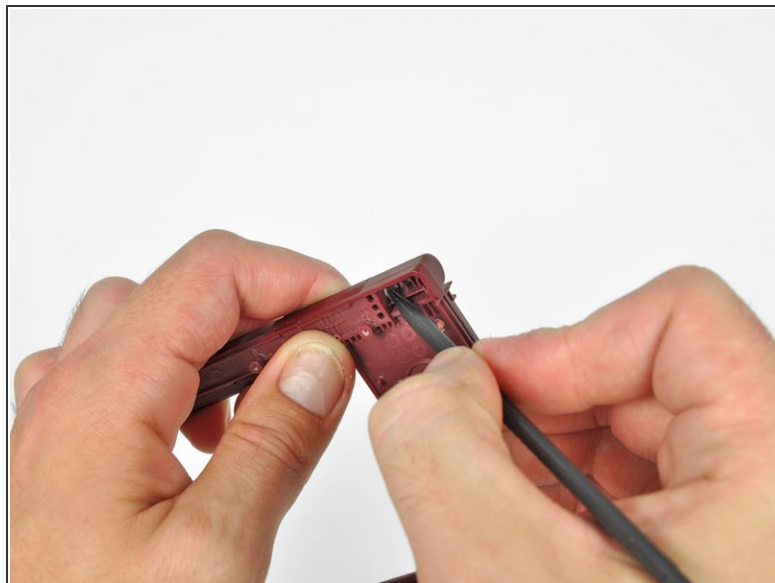
## Step 38





- Remove the LED diffuser and black retaining bracket by turning the upper case upside-down and letting both pieces fall into your hand.



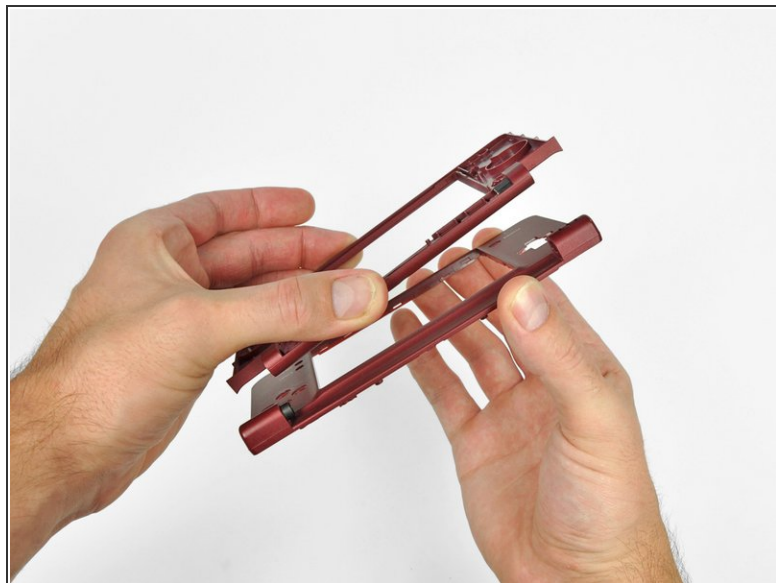
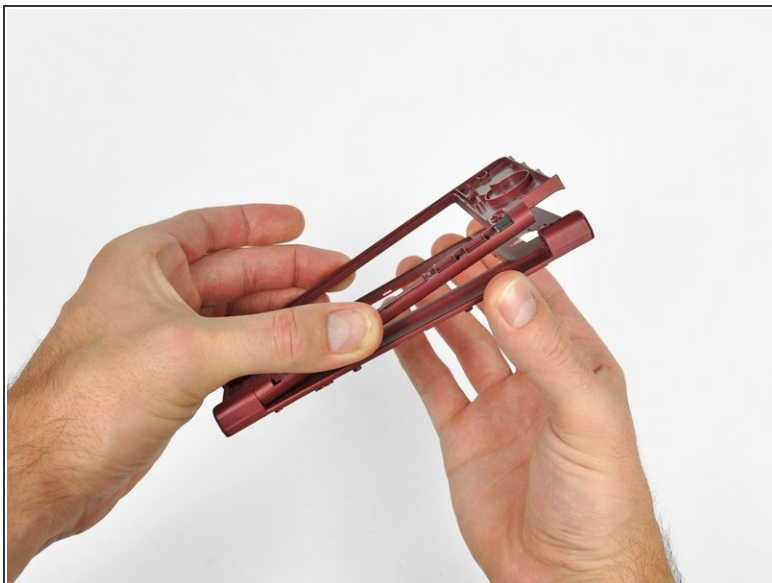
## Step 39



-  The front bezel is held in place by the clutch hinge on the left side of the DSi XL=L.

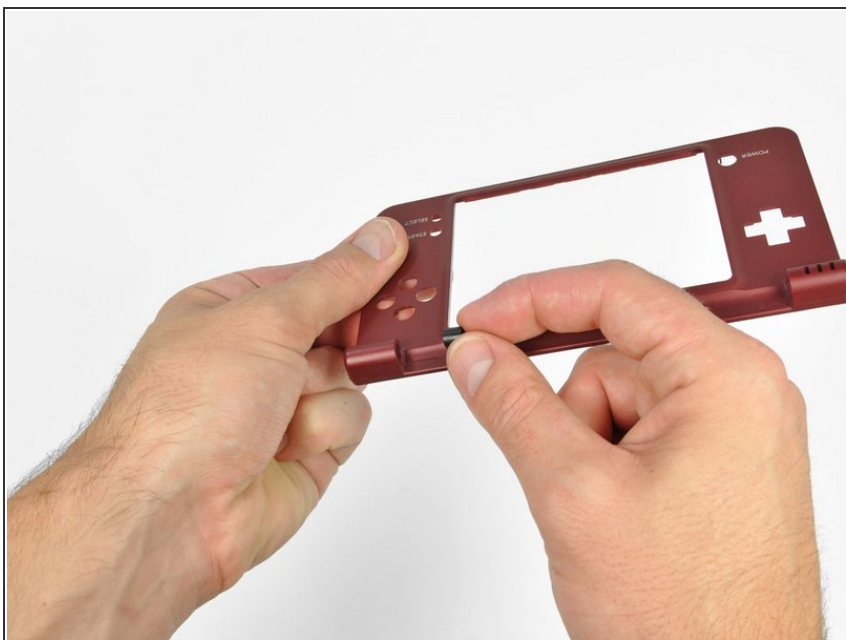
  - Using the tip of the spudger, push the clutch hinge to the left.
-  You will hear a "click" when the clutch has been completely displaced. Some force will be required.

## Step 40



- Lift the front bezel off of the upper case, tilting the left side of the front bezel away from the upper case first.

## Step 41



- Remove the hollow hinge pin from the right side of the DSi XL.
- The upper case remains.

To reassemble your device, follow these instructions in reverse order.

This document was generated on 2020-11-22 11:24:33 AM (MST).

