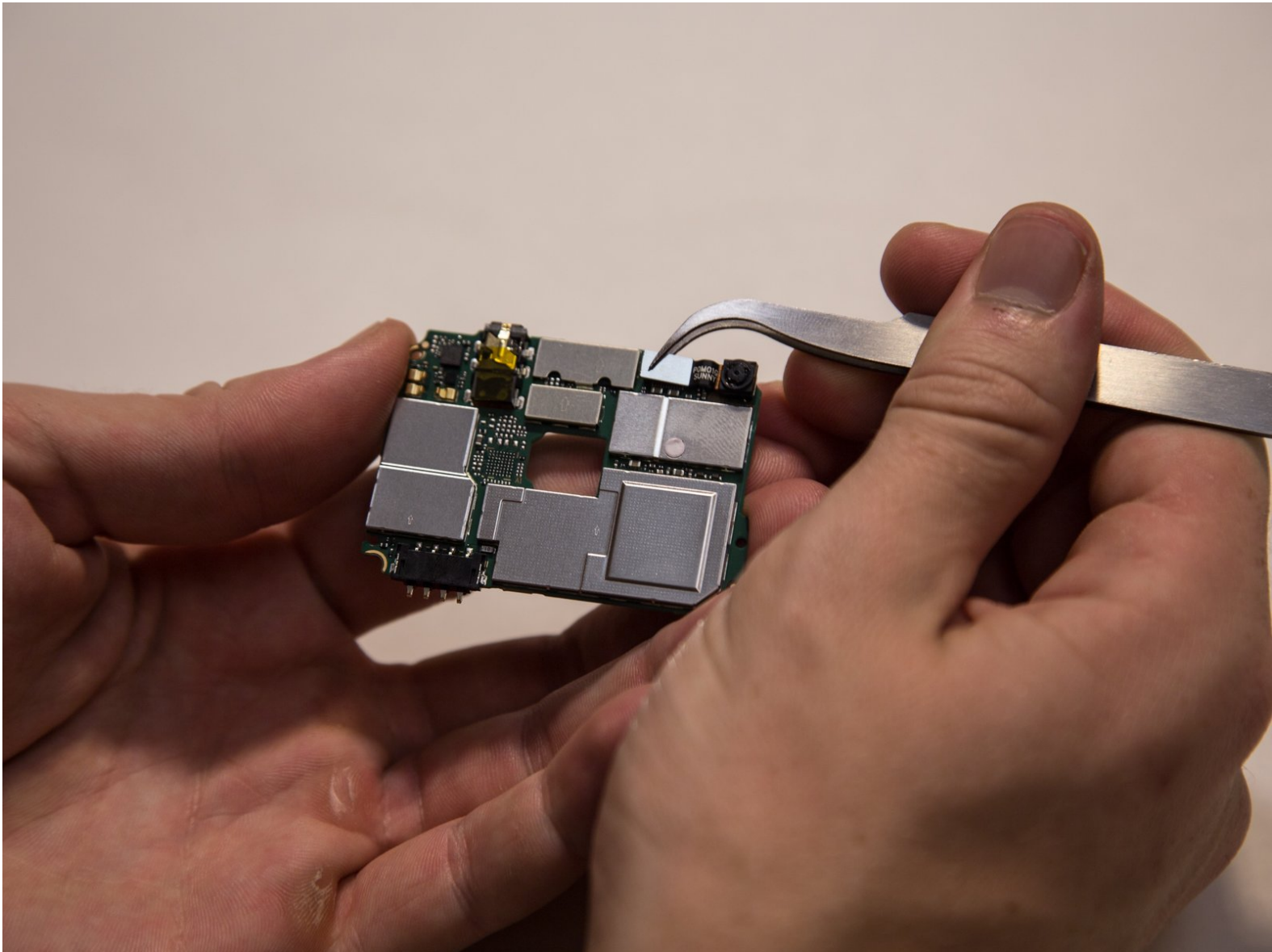




Huawei Ascend W1 Front Facing Camera Replacement

This guide will show you the steps to removing the front camera.

Written By: Jaie Hillery



INTRODUCTION

It is a straightforward guide showing the steps towards removing the front camera. Remember to be careful during the disassembling. The parts can break easily.



TOOLS:

- [Spudger](#) (1)
 - [T6 Torx Screwdriver](#) (1)
 - [Small Needle Nose Pliers](#) (1)
-

Step 1 — The phone's orientation.



- Flip the device over so that the back of the phone is facing you and the screen is against your palm.

Step 2 — Removing the back cover.



- Locate the slit at the bottom of the back cover.
- Using your fingernail, lift up on the back cover to expose the battery.

Step 3



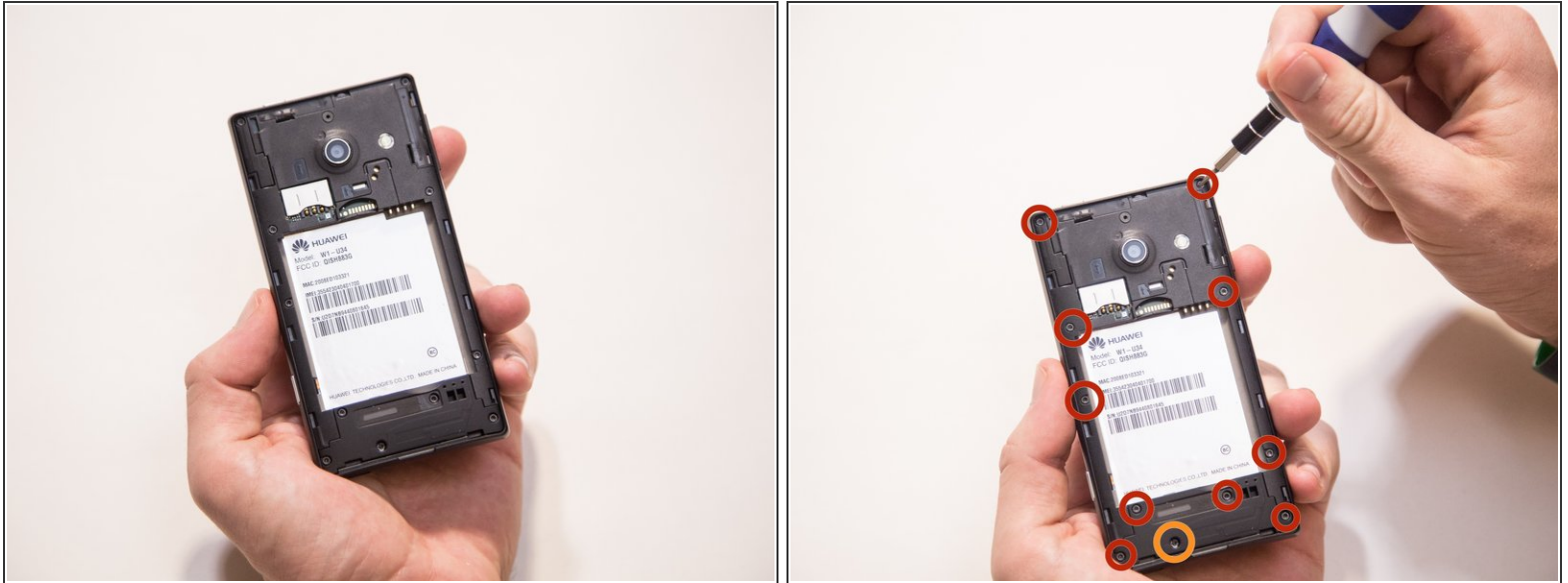
- Lift the back cover off the phone.
- ⓘ The back cover is snapped onto the phone so you will feel it unsnapping as you remove it.

Step 4 — Removing the battery.



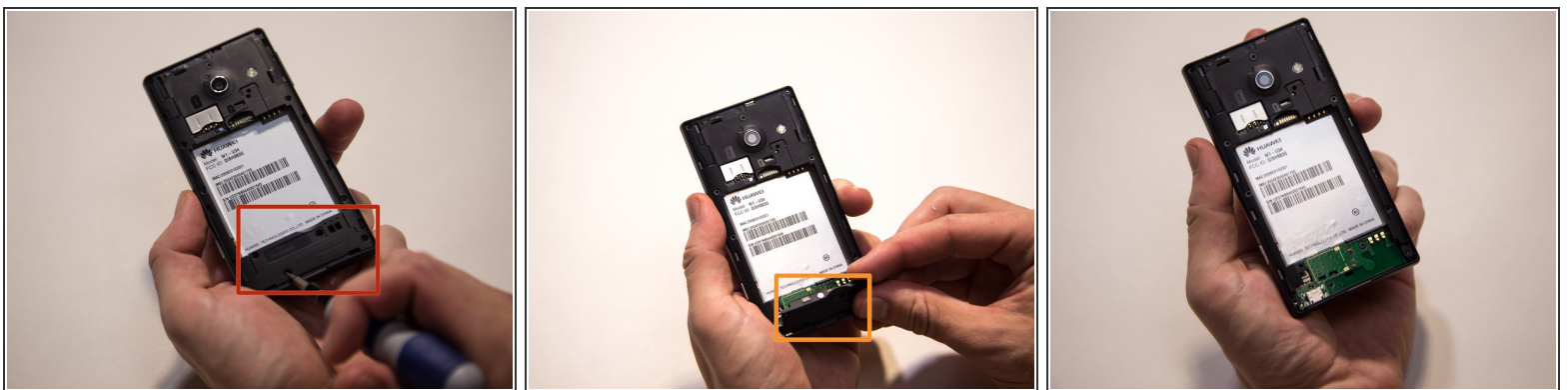
- Find the indented notch at the base of the battery.
- Lift the battery out of the phone with your fingers by pressing forward and lifting upward.

Step 5 — Remove all the screws.



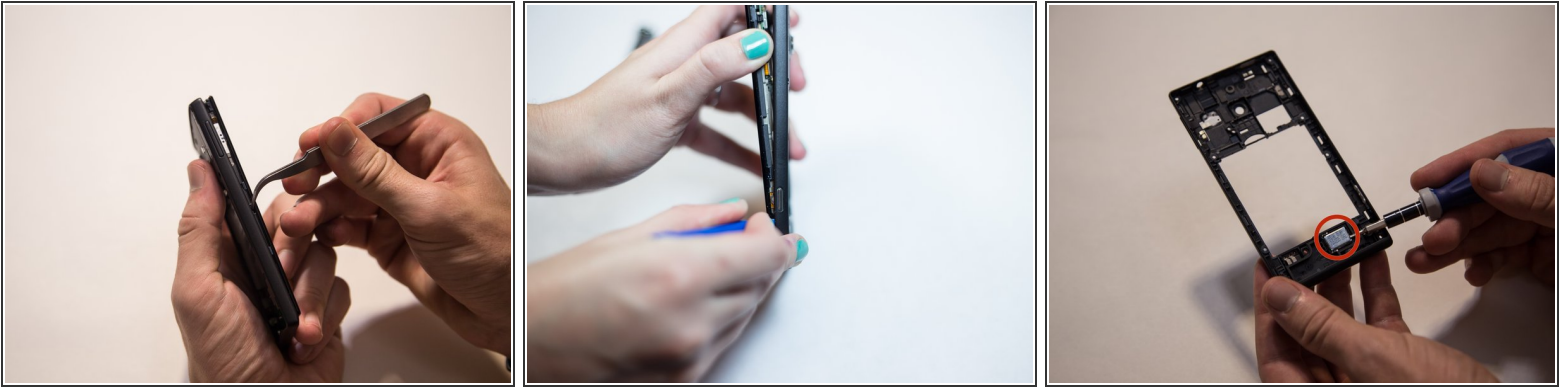
- After removing the battery, remove the screws using a T6 screwdriver.
- There are eleven screws that hold the middle cover to the rest of the phone.
- The screw that is marked by the orange circle is covered by a white dot.

Step 6 — Removing lower section of the middle cover.



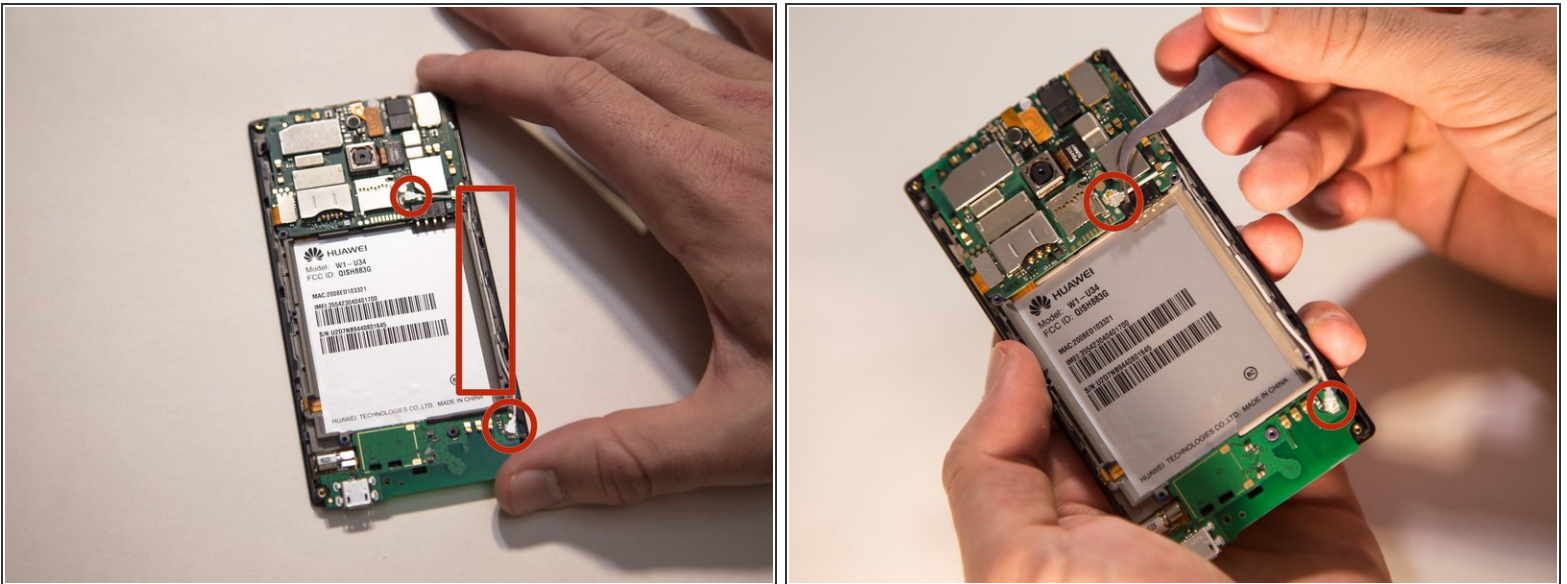
- After all the screws are removed, use your fingers to remove the lower section of the middle cover.
- Pull the lower section of the middle cover outward towards you, exposing the circuit board underneath.

Step 7 — Removing the rest of the middle cover.



- Begin working your way around the sides of the cover plate, unsnapping it gently.
 - The middle cover is a thin piece of plastic with the external speaker inside of it.
- ☑ Be **gentle** as you remove circuit cover. The parts might break if you are too forceful.

Step 8 — Locating the antenna.



- ⓘ The middle covers are removed.
- The antenna is a thin white wire that connects to the circuit board in two locations.

Step 9 — Removing the antenna



- Lift gently at each connector of the white wire to disconnect the antenna from the port.

Step 10 — Motherboard



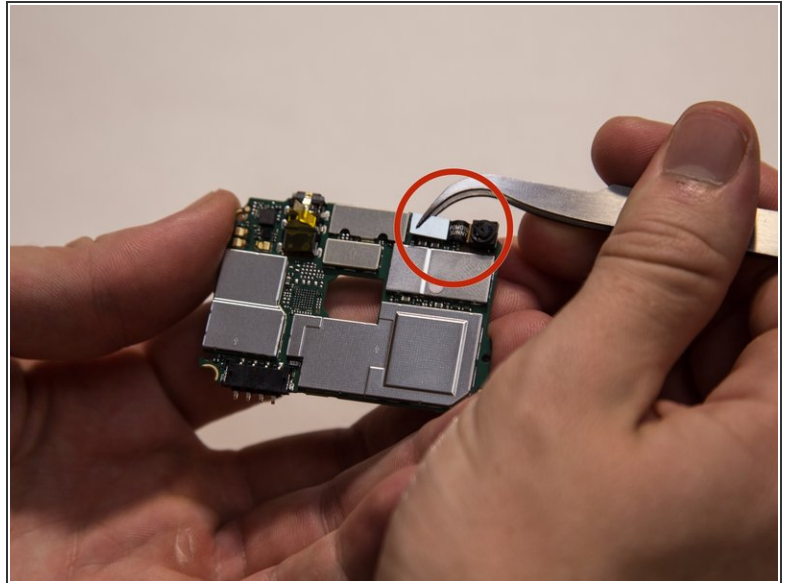
- Use a plastic spudger or your fingers to gently pry up the four flex cables from the main board.

Step 11



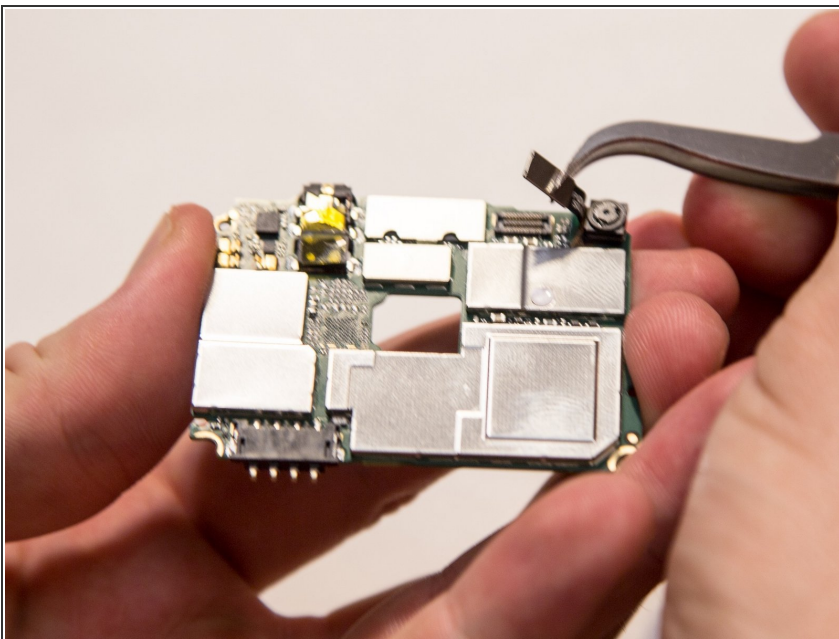
- i With the back of the phone facing you, there will be a small black clip on the left side holding the main board in place.
- Gently pry up near the small black clip with your fingers or a plastic spudger to detach the main board.

Step 12 — Locate the front camera



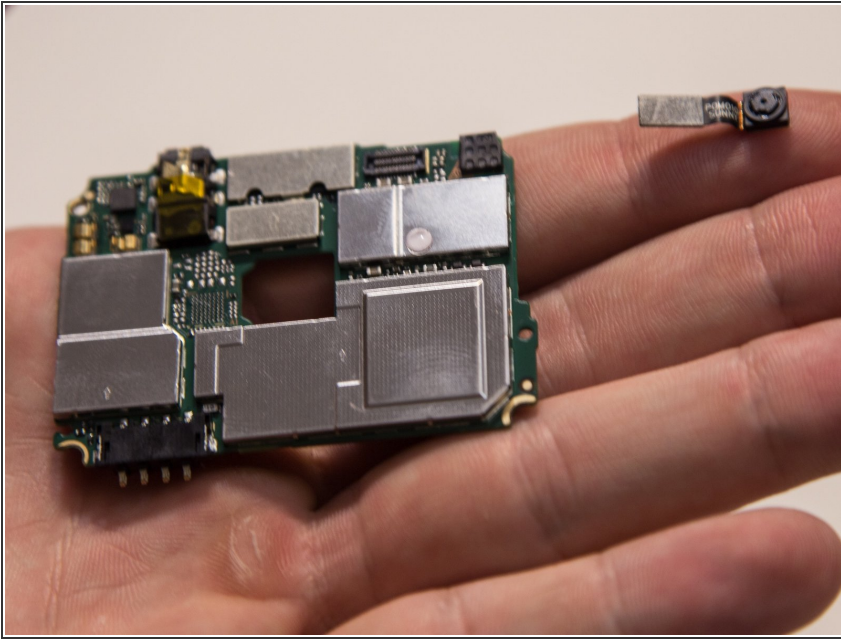
- With the main board facing away from you, the front camera is on the top right corner.
- There is a silver connector and a black flex cable attached to the front camera.

Step 13 — Remove the front camera



- Using the small pliers, disconnect the front camera's flex cable from the main board.

Step 14 — Removing the front camera.



- Once the flex cable is disconnected, completely remove the front camera off the main board.

To reassemble your device, follow these instructions in reverse order.