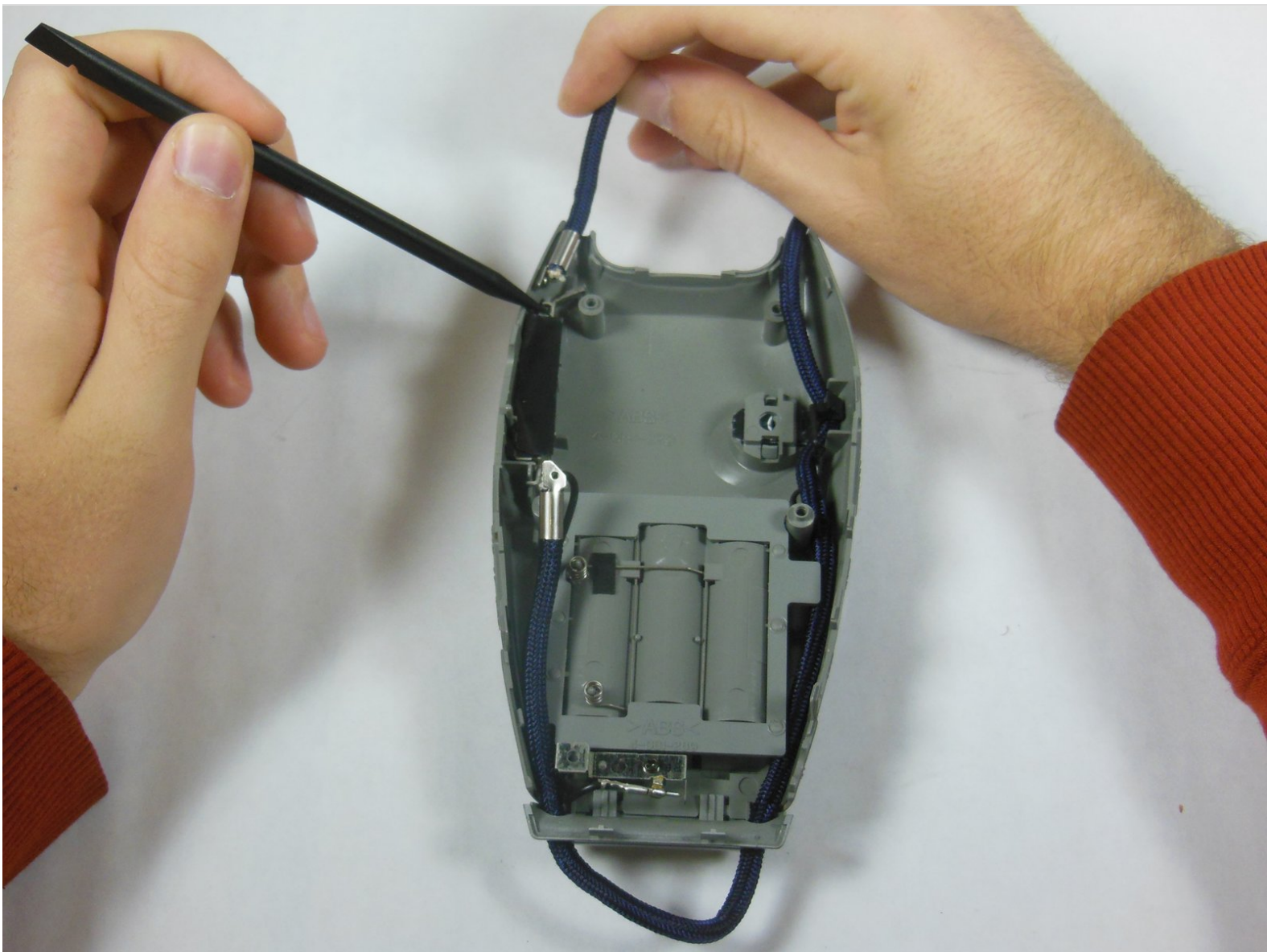




Sony FDL-220R Watchman Antenna Replacement

The antenna on the Sony FDL-220R Watchman is also a neck strap (the "straptenna"), and can easily detach under a hard pull. This guide will show how to reattach or replace an antenna that has been broken off.

Written By: Sam Putnam



INTRODUCTION

This guide will outline how to disassemble and reattach or replace the Sony FDL-220R Watchman antenna. Steps include basic disassembly of the Sony FDL-220R Watchman, and tools include a Phillips #00 Screwdriver and a Spudger.



TOOLS:

- [Phillips #00 Screwdriver](#) (1)
 - [Spudger](#) (1)
-

Step 1 — Remove battery cover and batteries



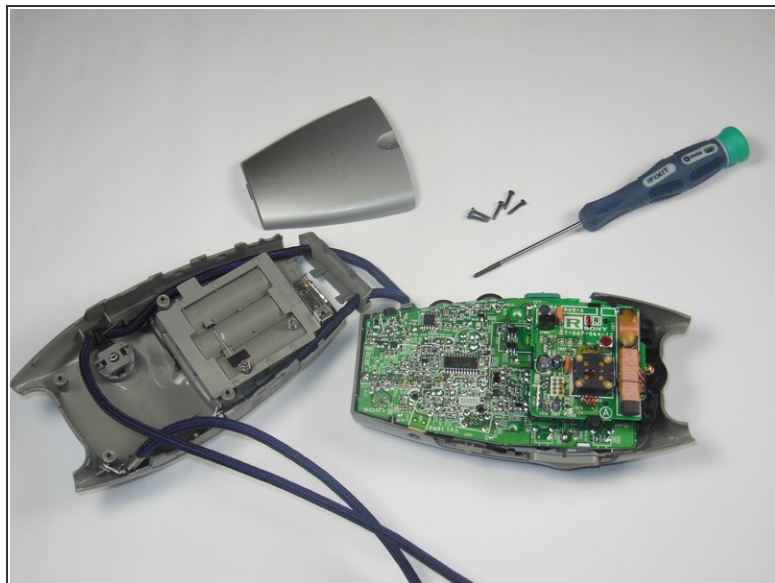
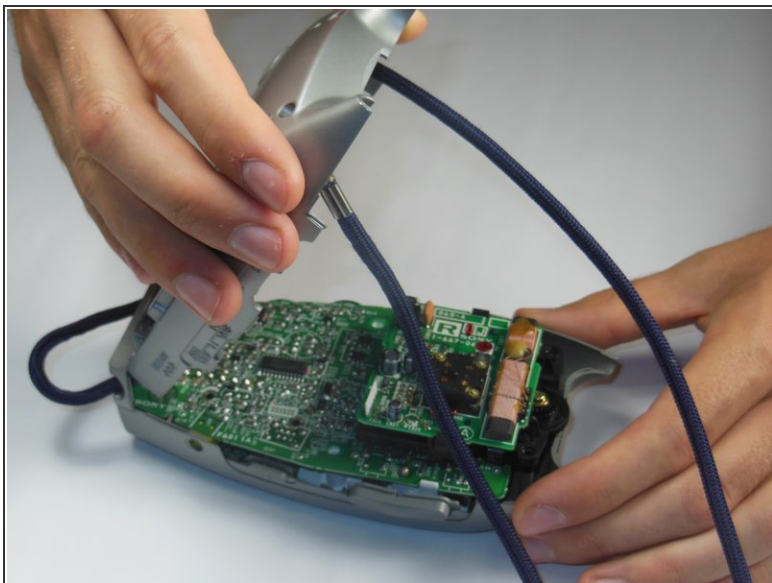
- Press down on the textured area and push towards the bottom of the device.
- Gently remove the battery cover.
- Remove the three AA batteries.


Step 2 — Remove screws



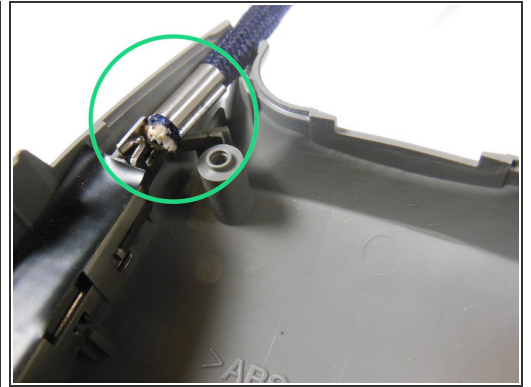
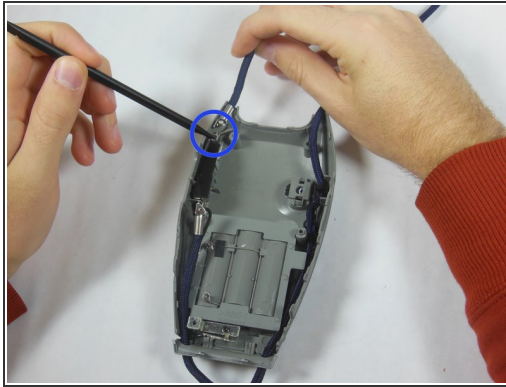
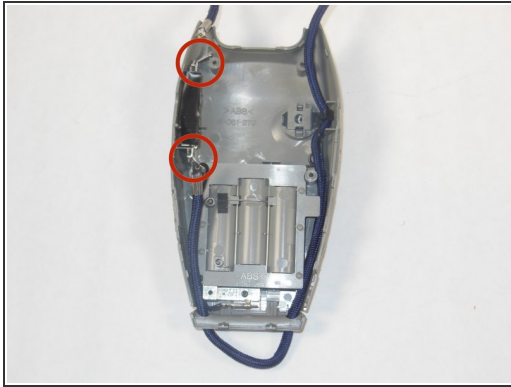
- Locate the five 5x11mm screws surrounding the battery compartment.
- Remove screws with a Phillips #00 screwdriver.

Step 3 — Remove back casing



- Grasp the entire back half of the Watchman's casing.
 - Snap off the casing from the bottom of the device.
 - Gently pull off entire back casing.
-  Buttons may fall out upon opening casing. See the [button replacement guide](#) to fix buttons.

Step 4 — Reattach antenna



- Locate the two metal tabs which are meant to hold the antenna in place.
- Pry back the metal tabs with a spudger.
- Hook the antenna into the metal tab.
- Ensure that the antenna is fully enclosed in the metal tab.

To reassemble your device, follow these instructions in reverse order.