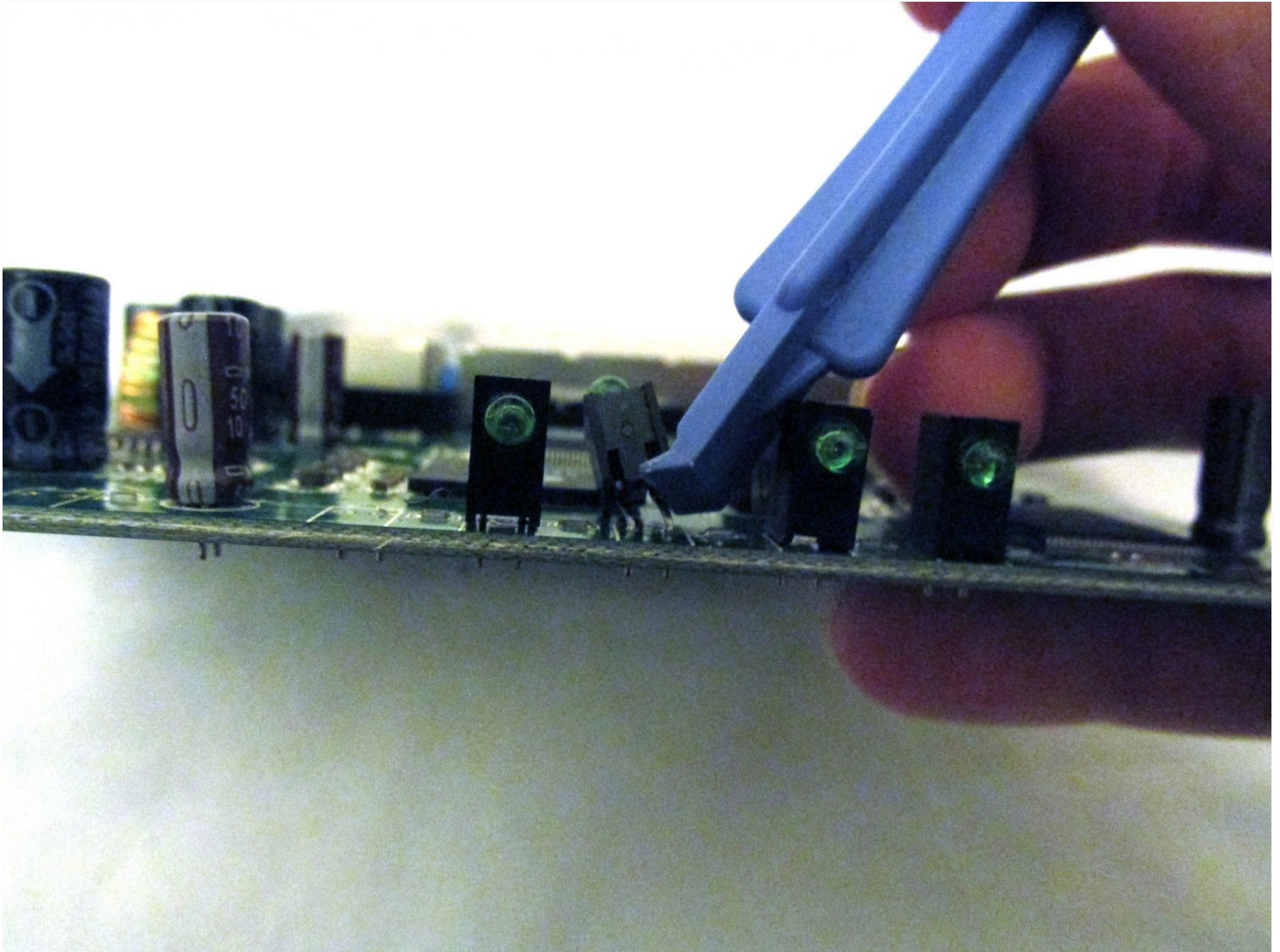




# D-Link EBR-2310 LED Light Replacement

LED lights are the lights on your device that...

Written By: Jessica



# INTRODUCTION

LED lights are the lights on your device that turn on to send you different messages about the functioning of your electronic router. If the LED lights on your D-Link router are fading, inconsistent, or completely off at the power up of your device, replacement may be necessary. This step-by-step instructional guide will help you do just that.

## TOOLS:

[iFixit Opening Tool](#) (1)

[Soft Cloth](#) (1)

[Tweezers](#) (1)

[Phillips #2 Screwdriver](#) (1)

## Step 1 — Remove Plastic Screw Coverings



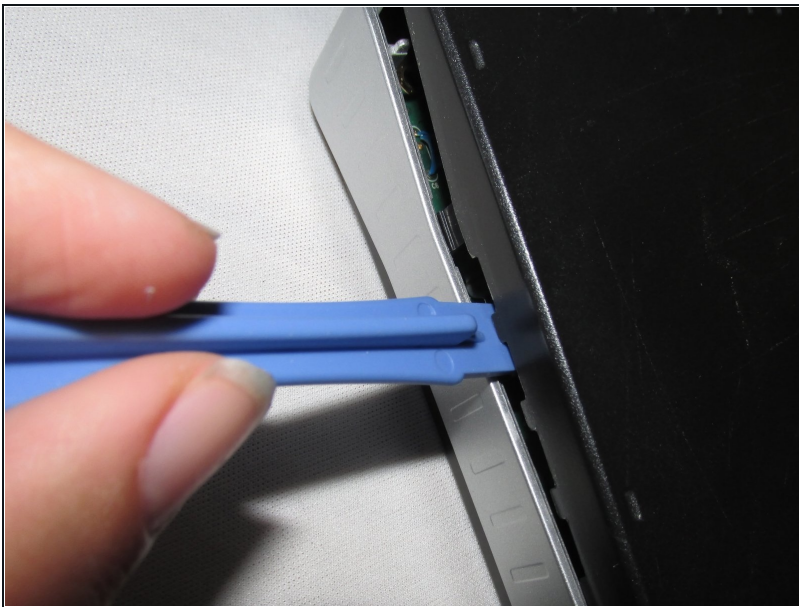
- Begin by placing the wired router face down.
- Locate the two black plastic screw coverings at the top of the device and remove them with your fingers.
- ① The two bottom plastic screw coverings do not need to be taken off.

## Step 2 — Remove Screws



- Using a Phillips #2 screwdriver, remove the two top screws.

## Step 3 — Pry Open The Router



- Use a plastic opening tool between the edges of the router and gently pry the device apart.
- Release the clips as you work your way around the device to avoid breaking them.
- Separate the front and back case of the router.

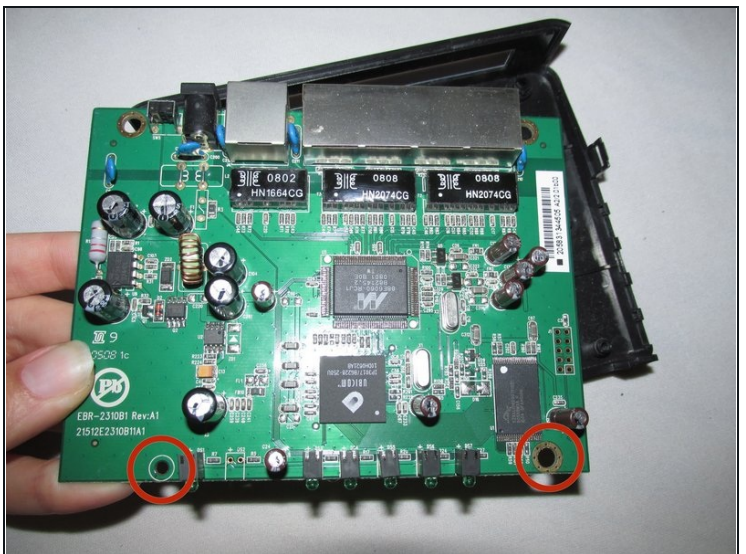
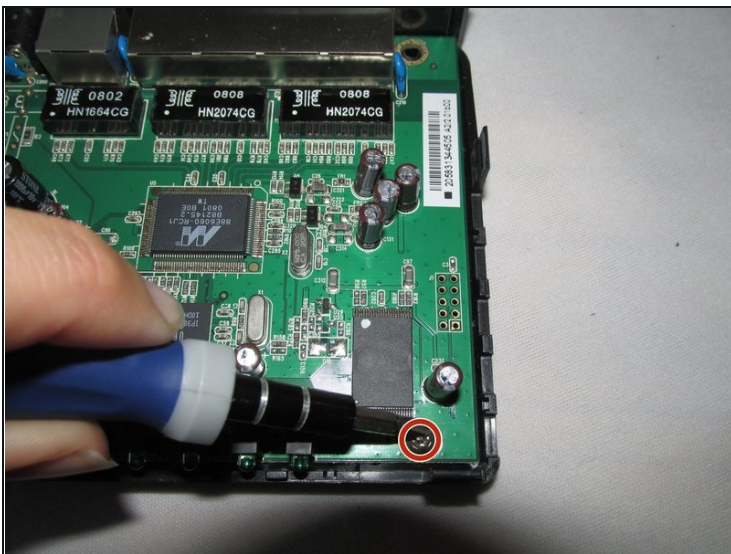


## Step 4 — Remove Silver Casing



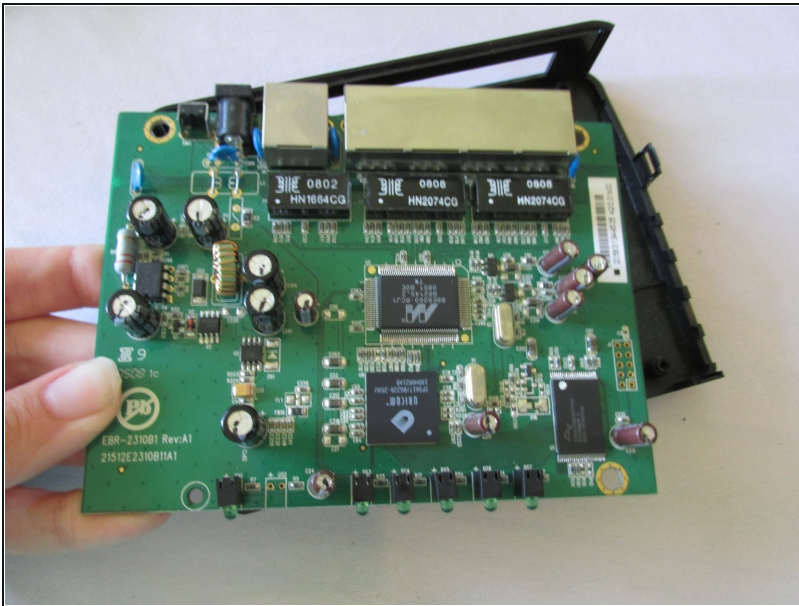
- Once you have removed the top black case of the router, remove the silver casing surrounding the logic board.
- ① It should easily snap out of place.

## Step 5 — Remove Inner Bottom Screws



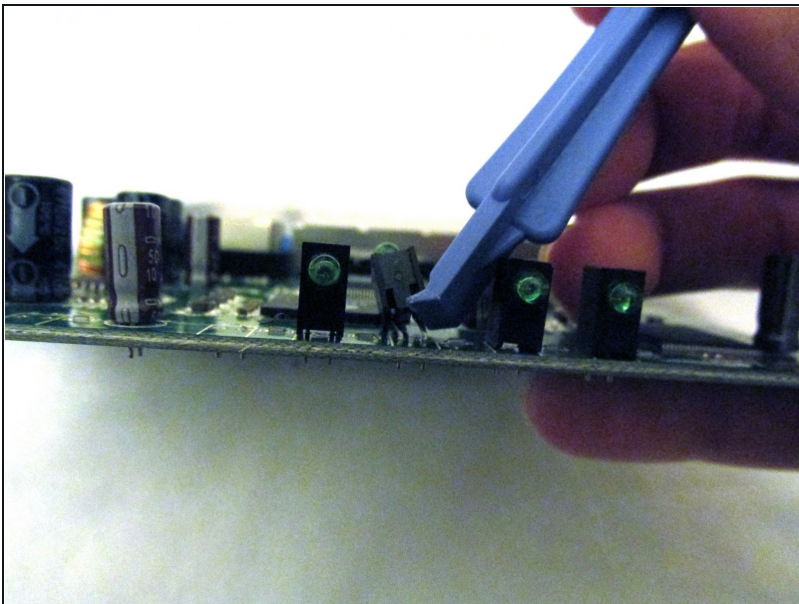
- Use a Phillips #2 screwdriver to remove the two screws at the bottom of the motherboard.

## Step 6 — Remove Bottom Case



- Now that you have removed all screws and the surrounding silver casing, pop the logic board out from the bottom component of the router.
- You have now removed the logic board from your device.

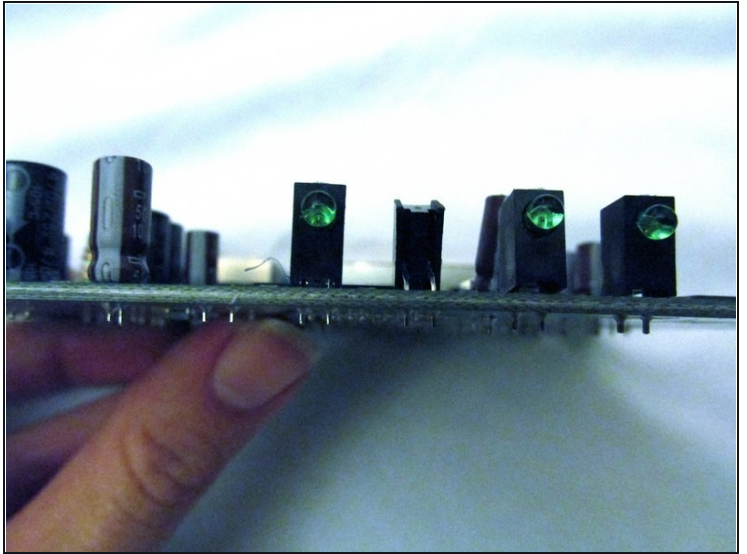
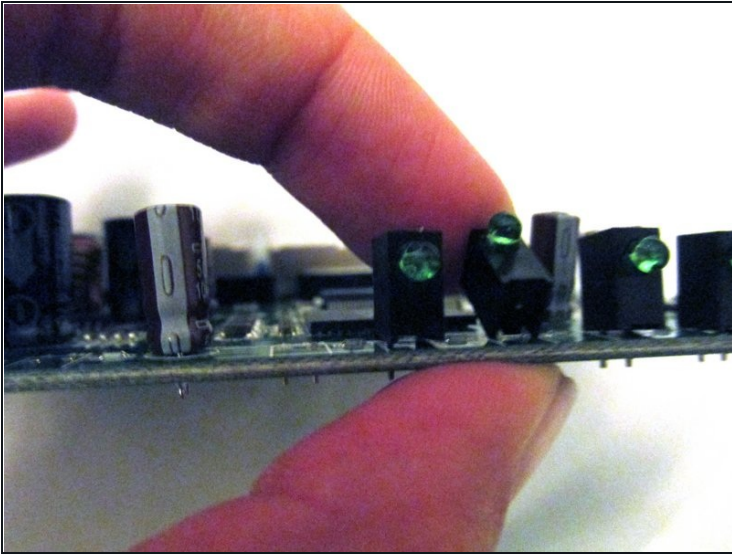
## Step 7 — Locate Problematic LED light



- Locate the problematic LED light on the motherboard.
- Using a plastic opening tool, very gently tilt its black base backwards.

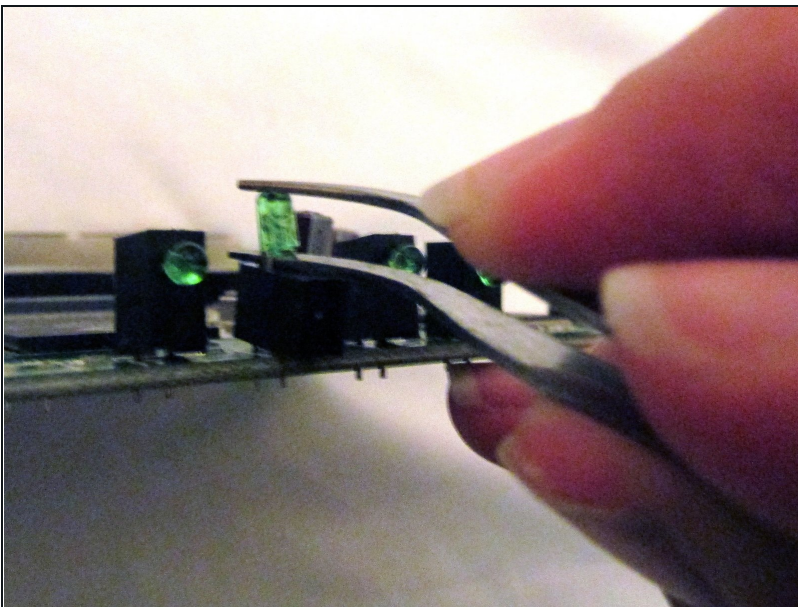


## Step 8 — Continue Readjusting LED Light Base



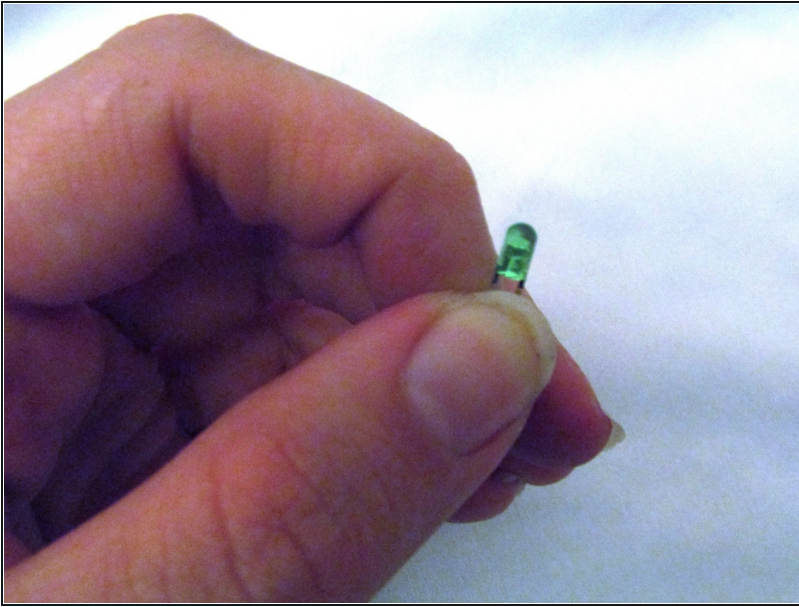
- Using your soft finger, tilt the LED light base backwards so that the actual light is facing upside down, at a 180 degree angle from the others.

## Step 9 — Remove the LED Light



- With a pair of tweezers, gently pry the LED light back and forth between its connecting wires until it is able to be removed.

## Step 10 — Complete Removal



- You should now have a removed LED light, ready to be replaced with a new one.

---

To reassemble your device, follow these instructions in reverse order.