



# Blu L120 MicroSD Card Replacement

Use this guide to expand your storage space!

Written By: Julio

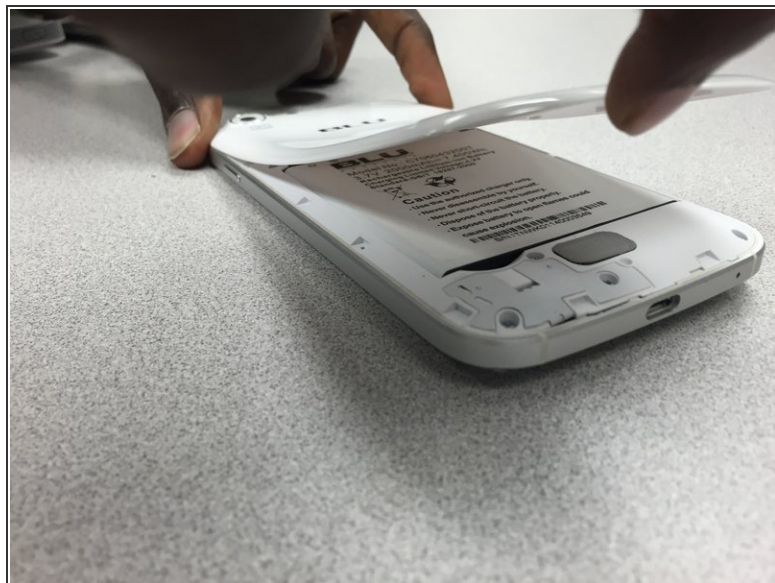




## TOOLS:

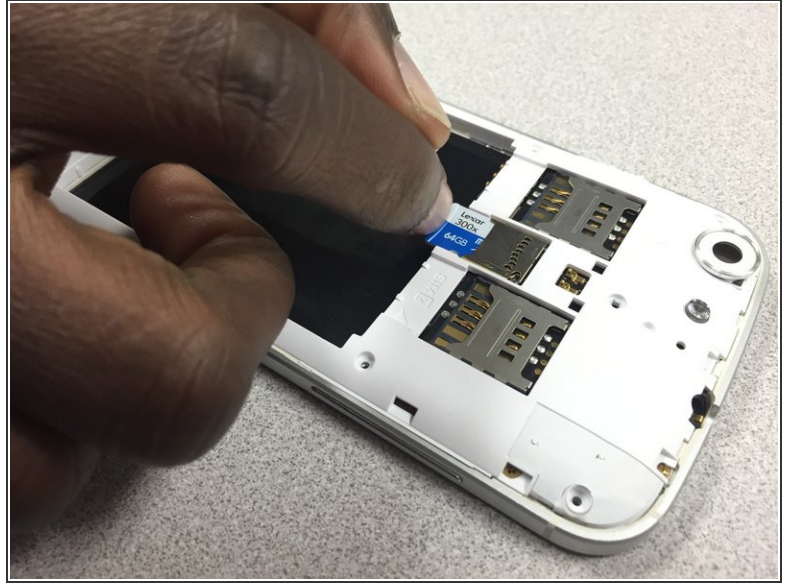
- [iFixit Opening Tools](#) (1)
  - [Spudger](#) (1)
-

## Step 1 — Adding additional storage



- Turn off the device, and remove the back cover. Start on the notch above the charging port and lift cover up and gently work around the phone until the back cover is off.
- Remove the battery.

## Step 2 — Adding additional storage



- Insert the media card into the phone. Maximum 32gb micro SD.
- Reinstall the battery and back cover, and power on your device. *Success..... you just added more storage to your phone.*

To reassemble your device, follow these instructions in reverse order.