



# LG G2 mini LTE Rear Facing Camera Replacement

Replace a broken or cracked LG G2 mini rear facing camera.

Written By: Nicholas Van Beek





## TOOLS:

- [Phillips #2 Screwdriver](#) (1)
- [Spudger](#) (1)



## PARTS:

- [LG G2 mini Rear Facing Camera Replacement Part](#) (1)

## Step 1 — Remove the Battery Cover



- Remove the back cover by placing your fingernail in the crease between the cover and the charging port.
- Pry upward and the cover should pop off easily.

## Step 2 — Remove the Battery



- Remove the battery from the battery bay by prying with your finger at the groove on the lower end of the battery bay.

### Step 3 — Unscrew the Motherboard Cover



- Locate 10 screws and remove each one using a screw driver.

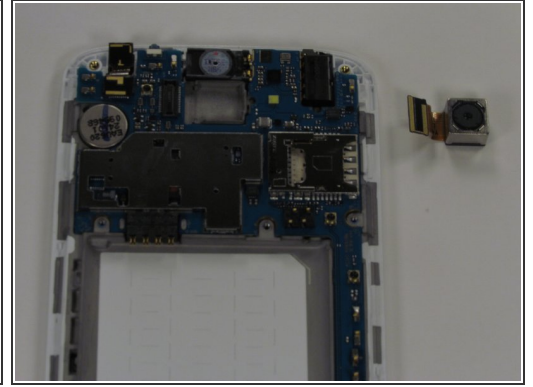
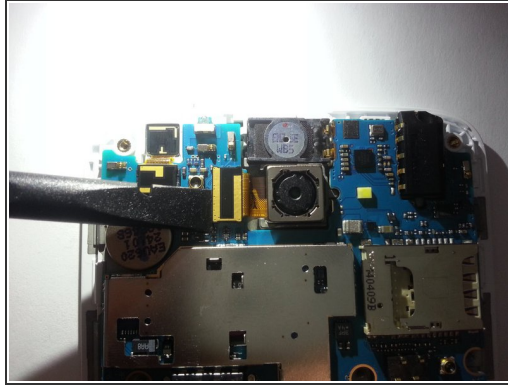
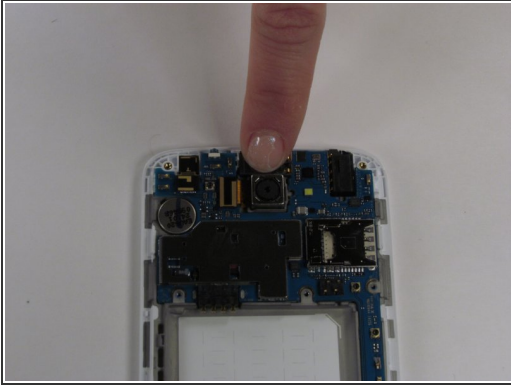
### Step 4 — Remove the Motherboard Cover



- Use a plastic spudger tool to pry away the cover by placing it between the cover and the screen bezel.
- Pry all the way around the phone about every centimeter until the cover is completely separated from the phone.



## Step 5 — Remove the Camera



- Locate the rear facing camera.
- Pry the ribbon cable off of it's connector using the plastic spudger tool.
- Use your finger to remove the camera.

To reassemble your device, follow these instructions in reverse order.