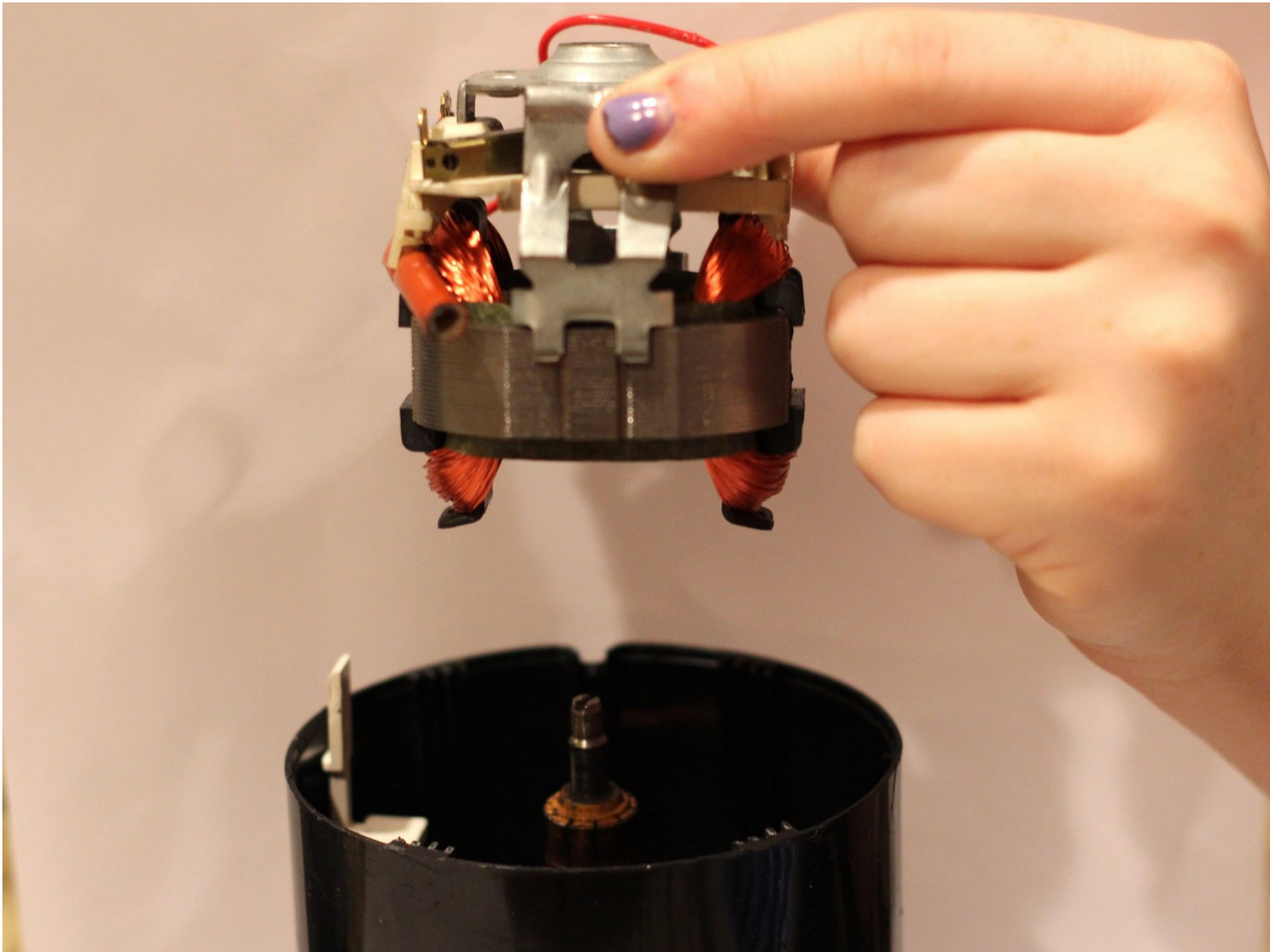




# Krups F203 Coffee Grinder Motor Replacement

If the motor in your Krups F203 coffee grinder...

Written By: Ian Hancock



---

## INTRODUCTION

If the motor in your Krups F203 coffee grinder is faulty, you will need to replace it. This guide will explain how to access the motor in order to replace it.

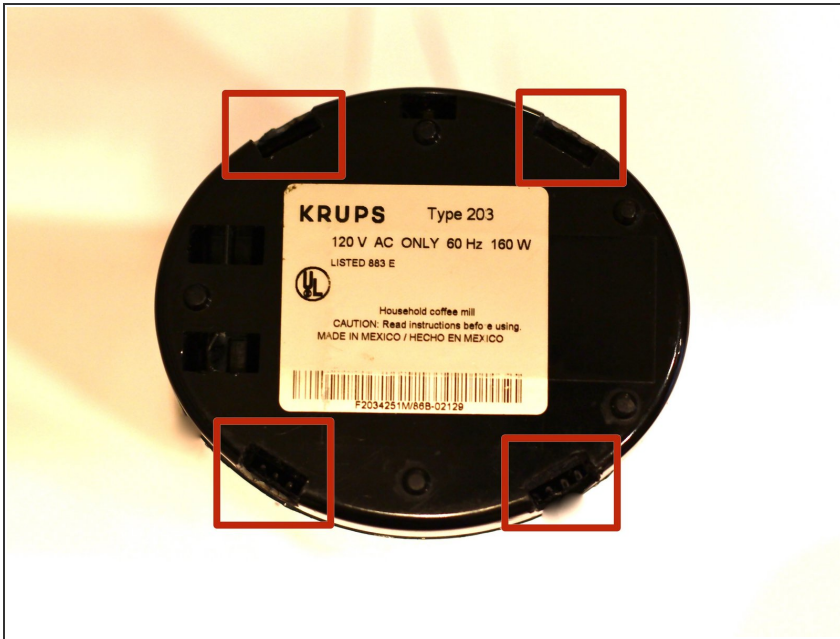
---



### TOOLS:

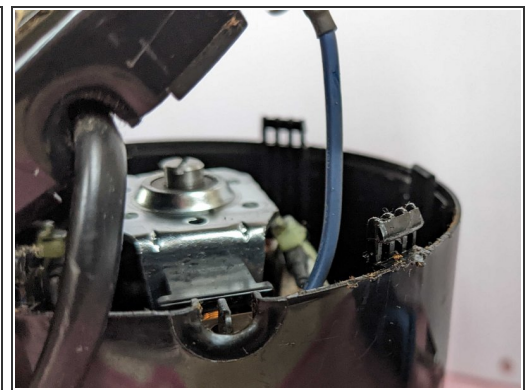
- [Spudger](#) (1)
  - [Soldering Workstation](#) (1)
-

## Step 1 — Base Plate



- In each of the four rectangular slots on the bottom of the device, there is an E-shaped clip.

## Step 2

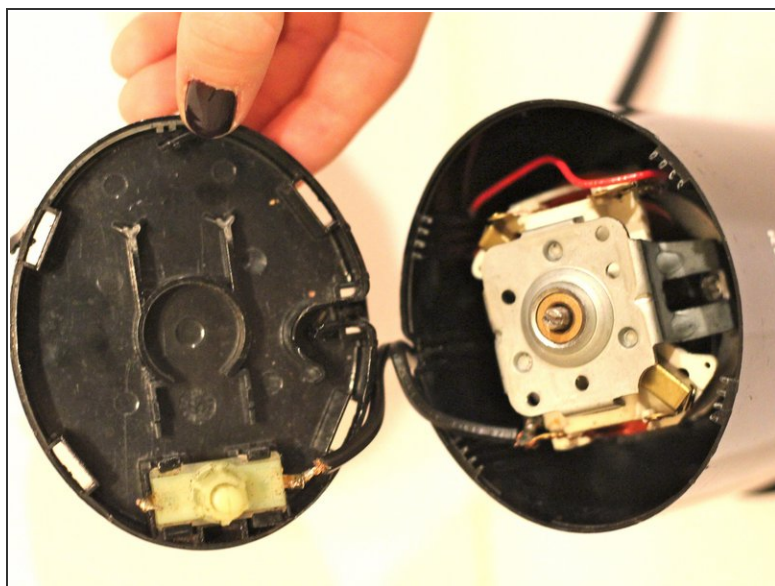


- Wedge the spudger between the flat side of the E-clip and the outside wall of the slot. Then, loosen up the clip by prying it inward with the spudger.

**⚠ Try not to break these clips as this will cause structural integrity issues upon reassembly**



### Step 3



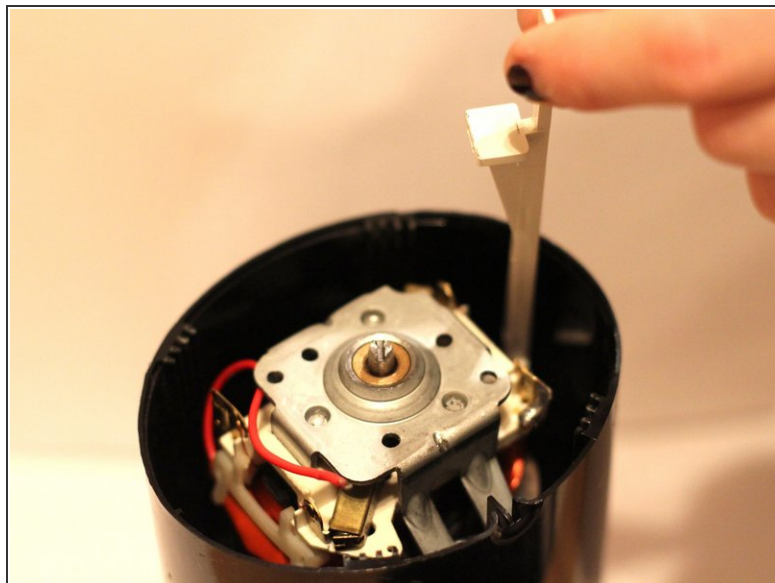
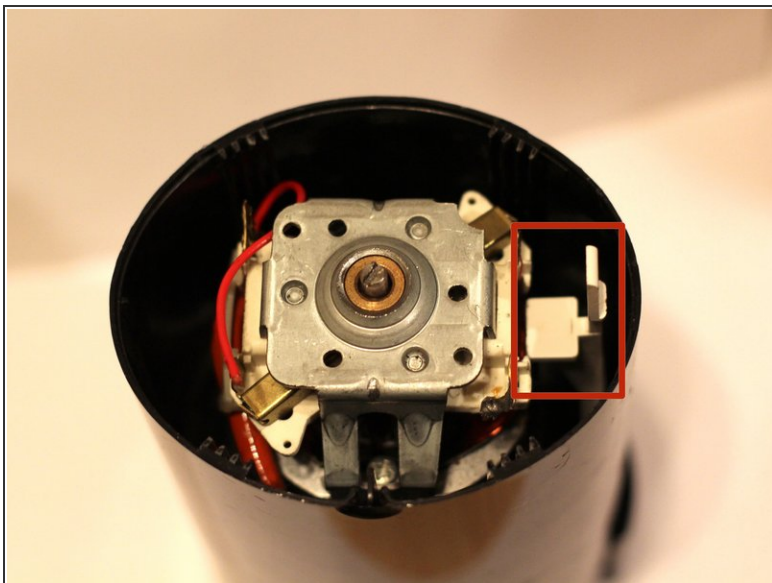
- Work your way around the four clips, loosening each a little at a time. Eventually, all four clips will be loose enough to remove the base plate.

### Step 4 — Detach Trigger Button from Base Plate



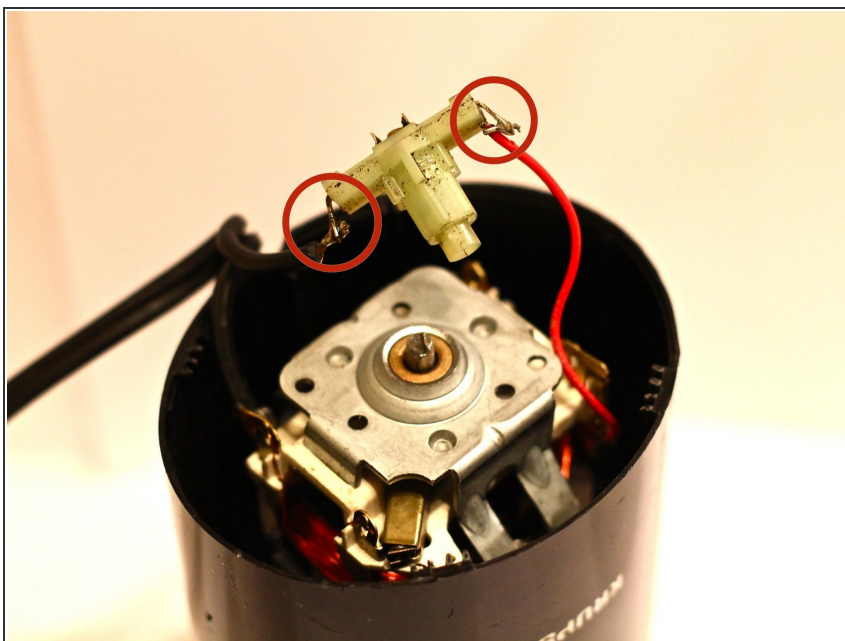
- The trigger button is held in with light tension clips. Gently pry them back to release.

## Step 5



- Remove the white trigger.

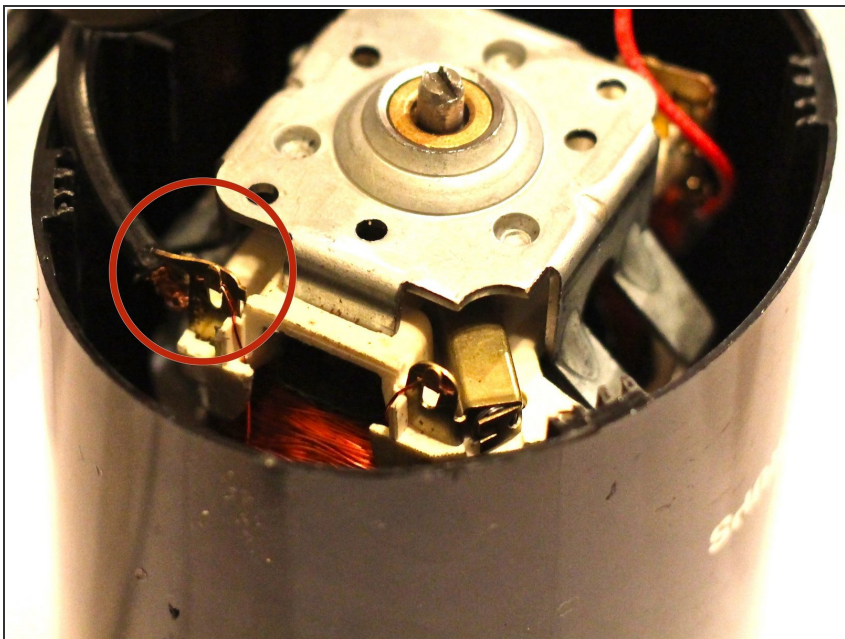
## Step 6



- Desolder the contact points between the trigger button and the red wire and also where the plug attaches to the trigger button
- ⓘ Be sure to reference the how to solder video posted to the device page

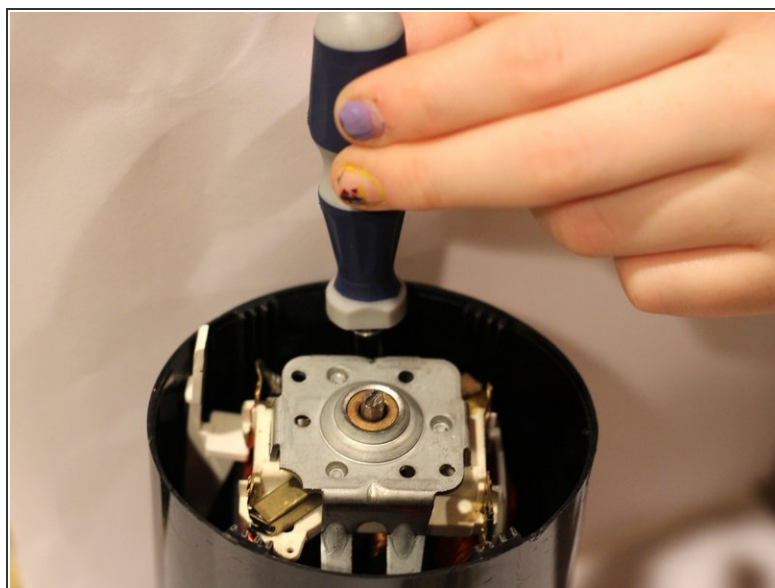
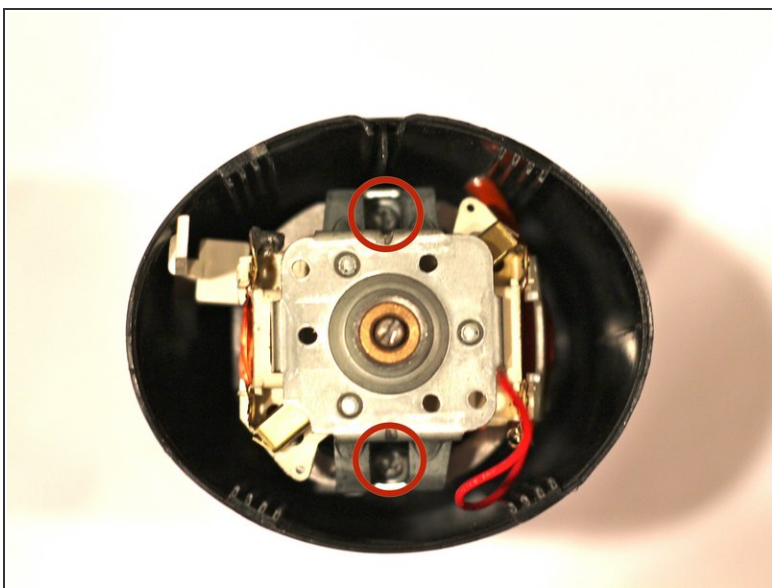


## Step 7 — Motor



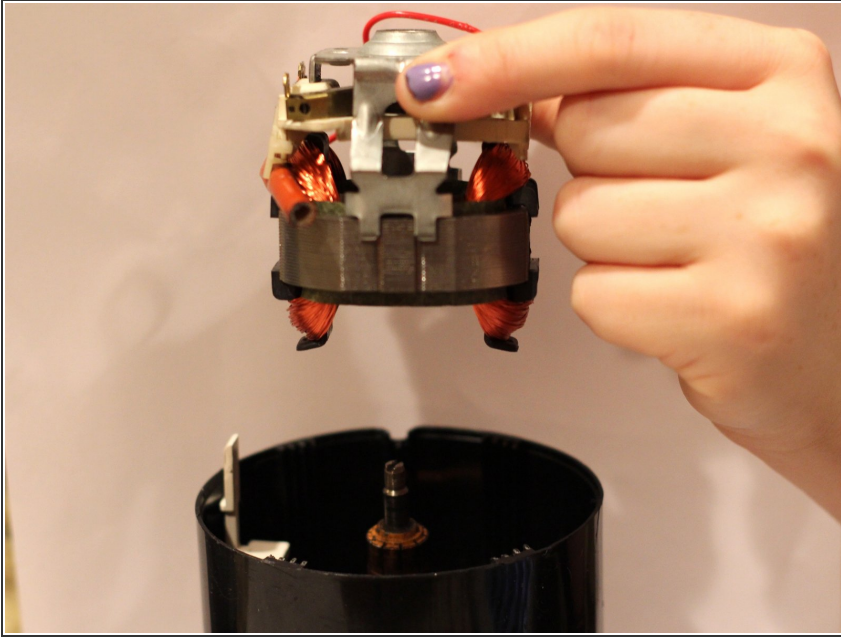
- Desolder remaining contact point from the plug cord

## Step 8



- Using a Phillips screwdriver, remove the two screws holding the motor in place.

## Step 9



- Remove the motor from the shell.

To reassemble your device, follow these instructions in reverse order.