

Written By: Carlos

Page 1 of 7

---

## INTRODUCTION

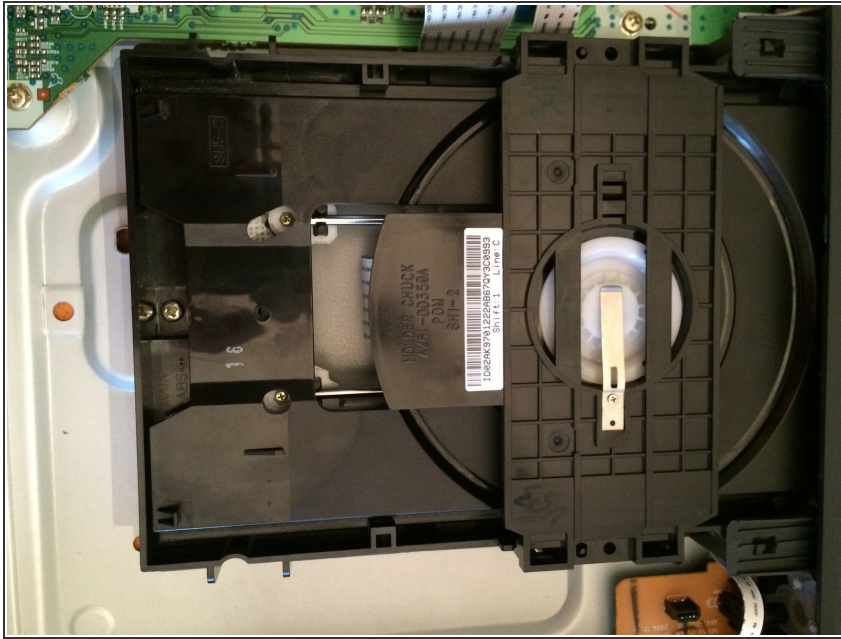
This guide shall assist you in fixing a jammed disk tray if you followed thoroughly the troubleshooting steps with no positive results.

---

### TOOLS:

- [Phillips #1 Screwdriver](#) (1)
  - [Magnetic Project Mat](#) (1)
-

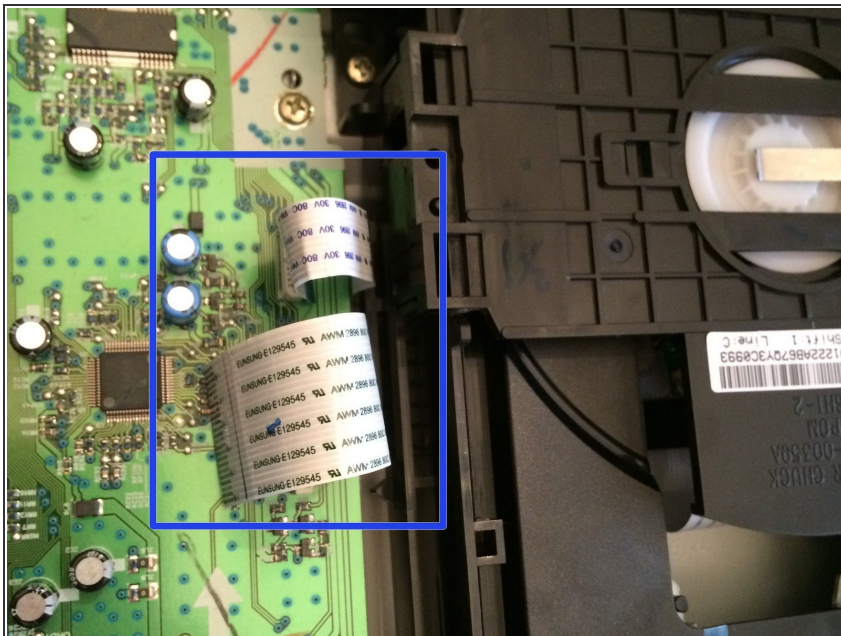
## Step 1 — Locate and Remove The Disk Tray



**⚠ \*NOTE\*** remember to never connect to power when working on electrical components

- Find and locate the disk tray it is located top right hand side of the component when the back of the device ( dvd player ) is facing you.

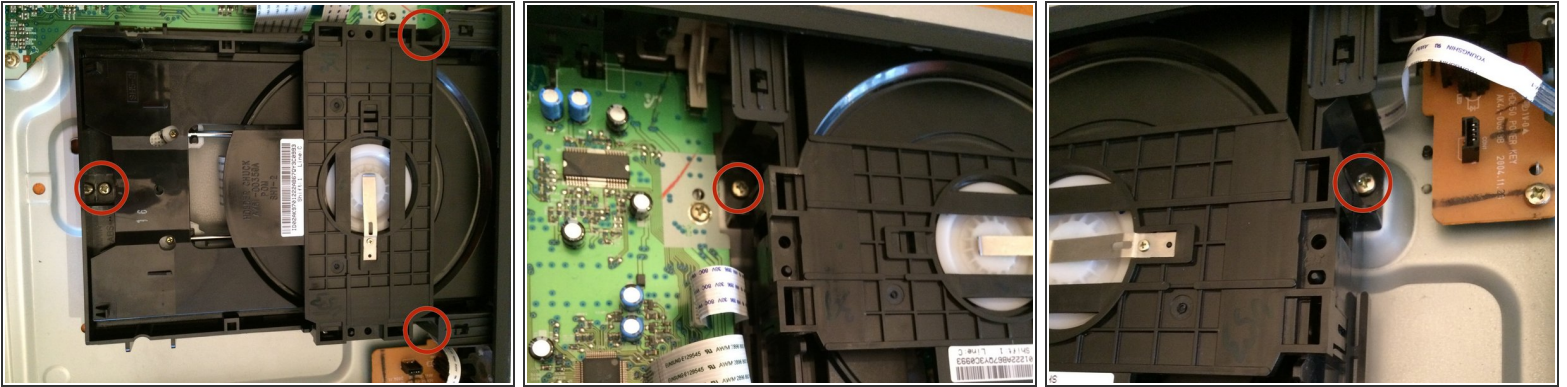
## Step 2 — Removing The Data Strips



- Locate and gently remove the data strips on the tray. There are three in total, two on the left hand side and one on the right.



### Step 3 — Removing The Screws



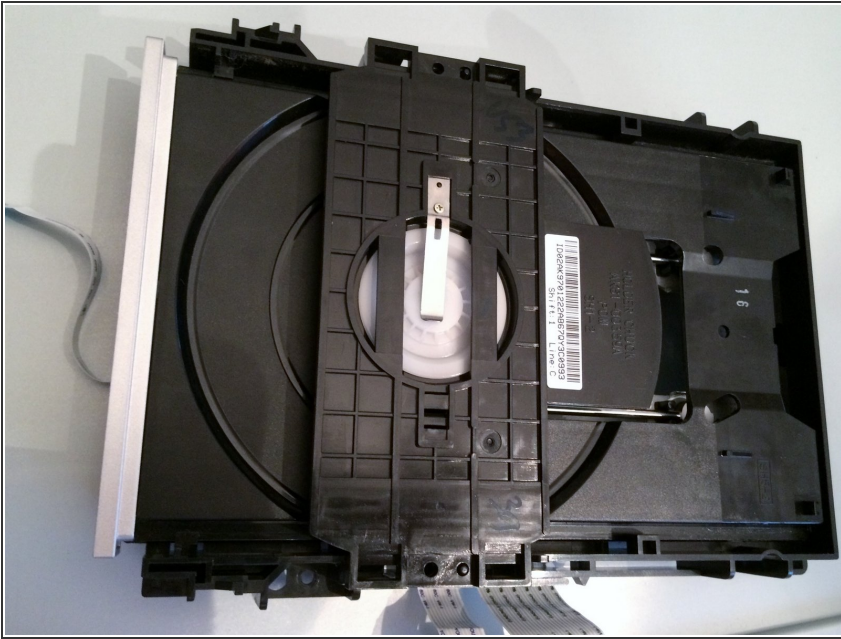
- As noted by the red circles, locate and remove the screws one at a time

### Step 4 — Disk Tray Removal



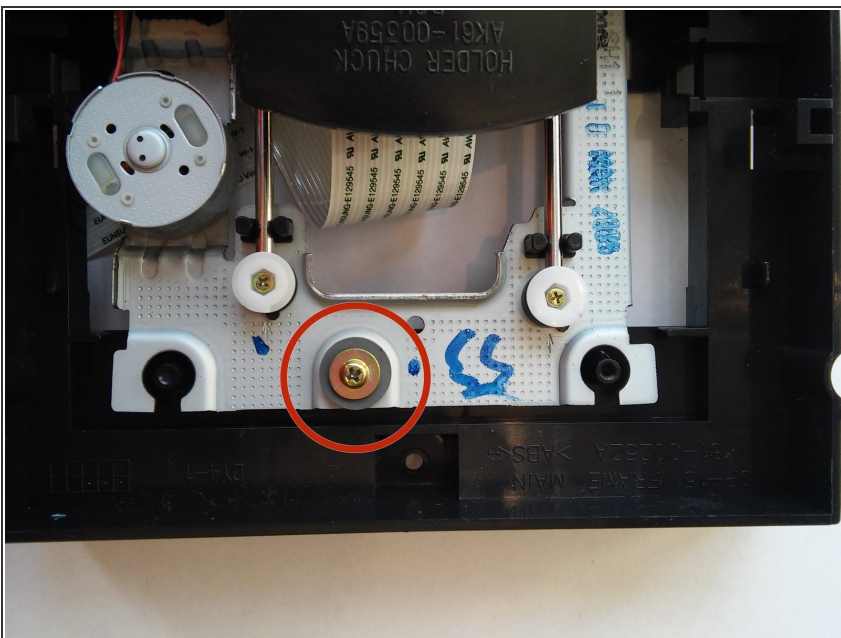
- After removing the clips slowly incline the disk drive towards you and unclip it from the two (2) brackets located on the top
- ☑ Be careful not to push too much pressure on the brackets since they tend to break easily

## Step 5 — Success!



- Congrats! You have successfully taken out the disk drive

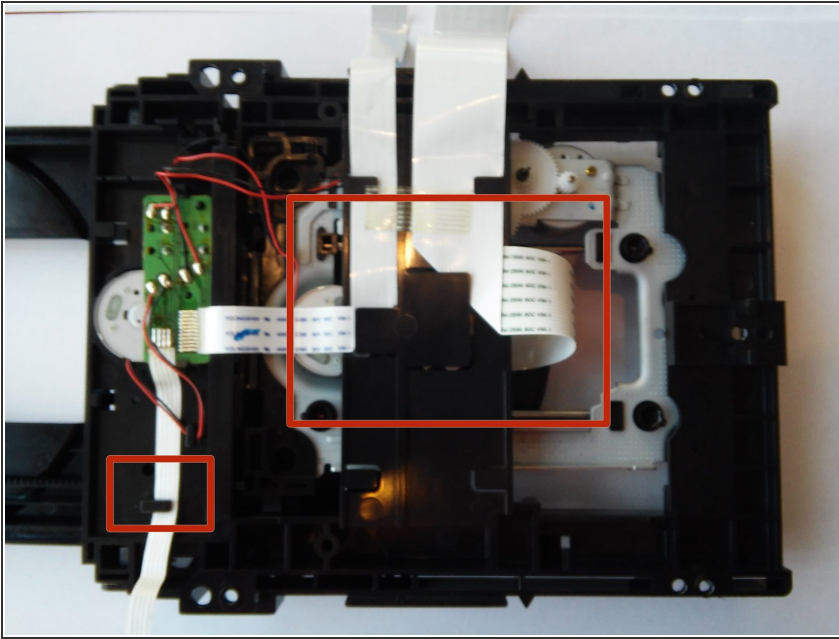
## Step 6 — Disassemble the motor from the disk tray



- ⚠ **\*NOTE\*** remember to never connect to power when working on electrical components
- Remove screws as noted by the picture

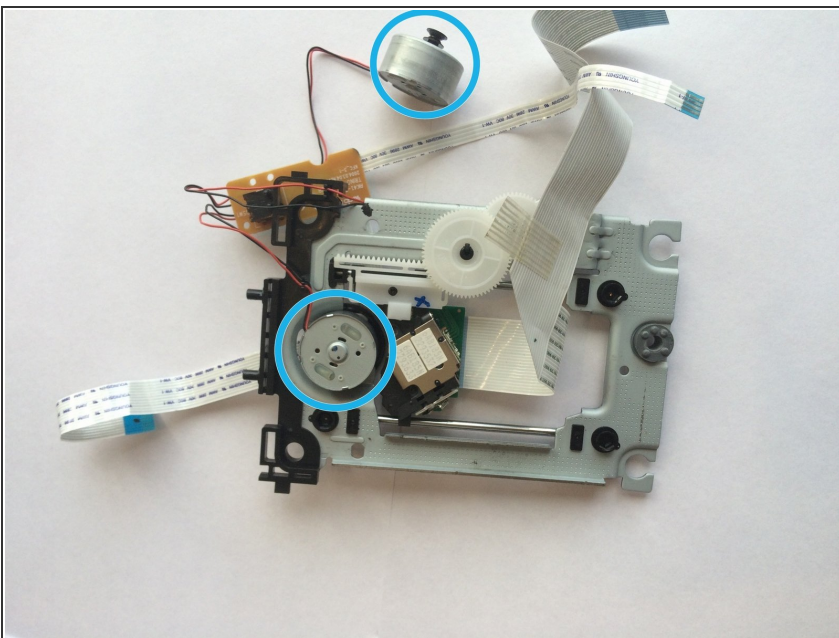


## Step 7 — Removing Data Strips



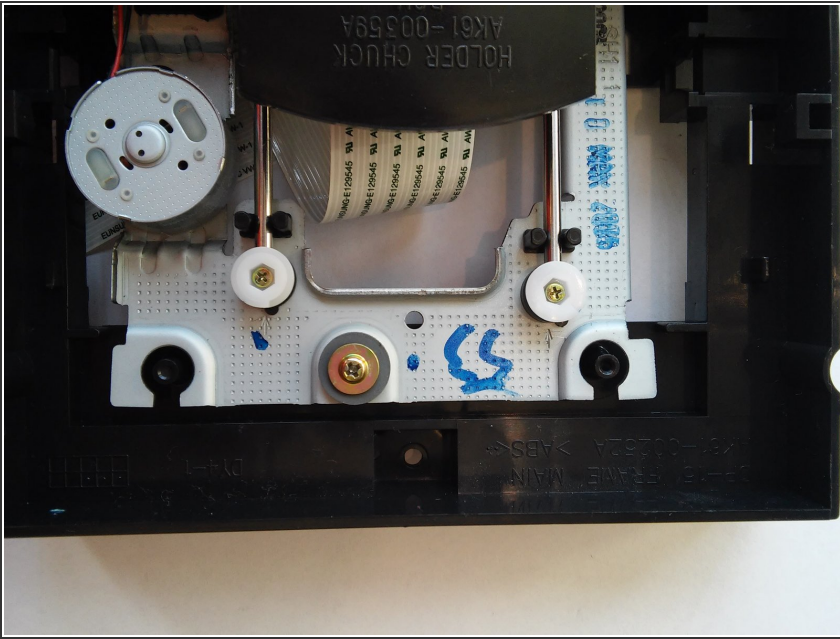
- Slowly remove the circuit board/cables/strips from under the black bar. ( under and over)
- ★ Be careful not to pull it hard, due to these cable are fragile and can break easliy

## Step 8 — Replacing Motor



- Replace the motor in question ( usually both are needed to be replaced)

## Step 9 — Reassembly



- To reassembly do these steps in reverse order

To reassemble your device, follow these instructions in reverse order.