



Jabra CRUISER2 Status Display Replacement

Follow this guide to remove the status display. Do this if it is not responding and needs replacement.

Written By: Spartacus



INTRODUCTION

Without a functioning status display, which powers the LED interface, control of the device is limited. This guide will tell you step-by-step how to replace the status display.

TOOLS:

- [iOpener](#) (1)
 - [Microwave](#) (1)
 - [iFixit Opening Tools](#) (1)
 - [Phillips #000 Screwdriver](#) (1)
 - [Soldering Workstation](#) (1)
-

Step 1 — Front Plate



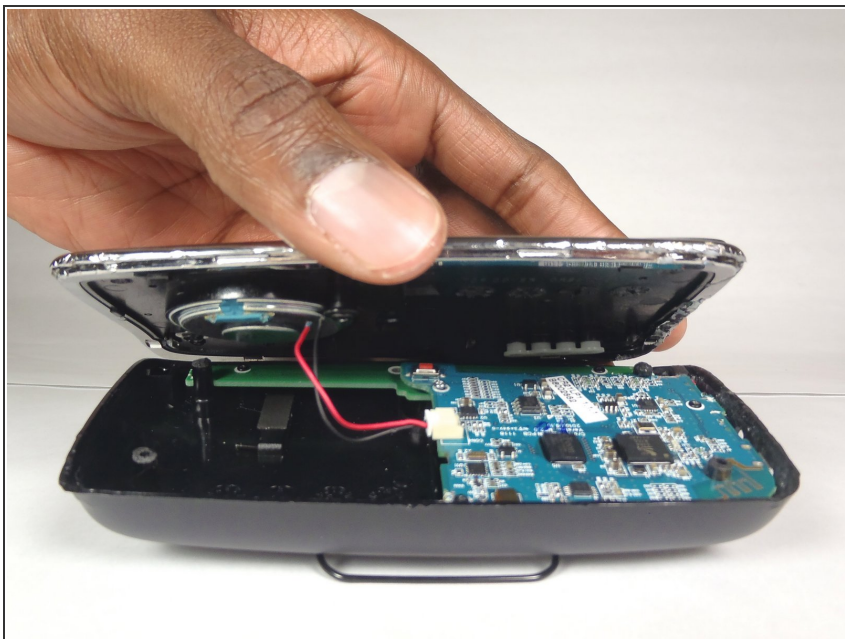
- Use the iOpener tool to unglue the adhesive of the device. The link to the iOpener instructions are listed below.
- [iOpener Instructions](#)

Step 2



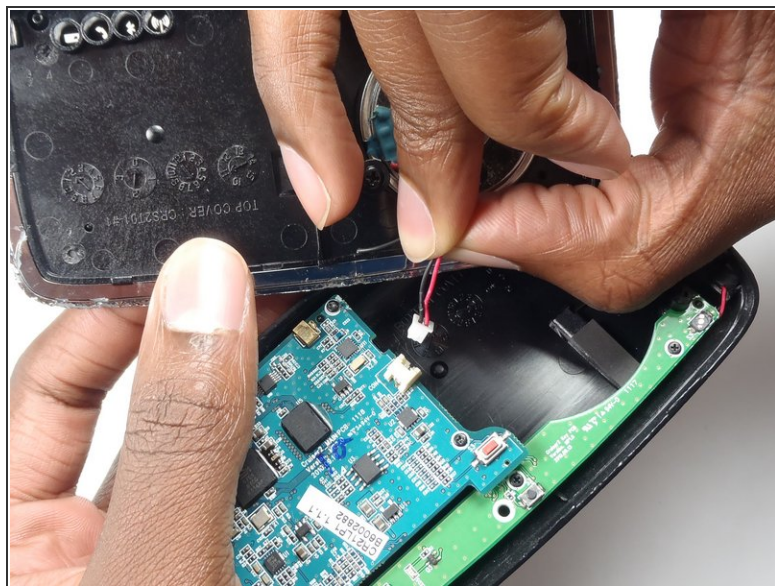
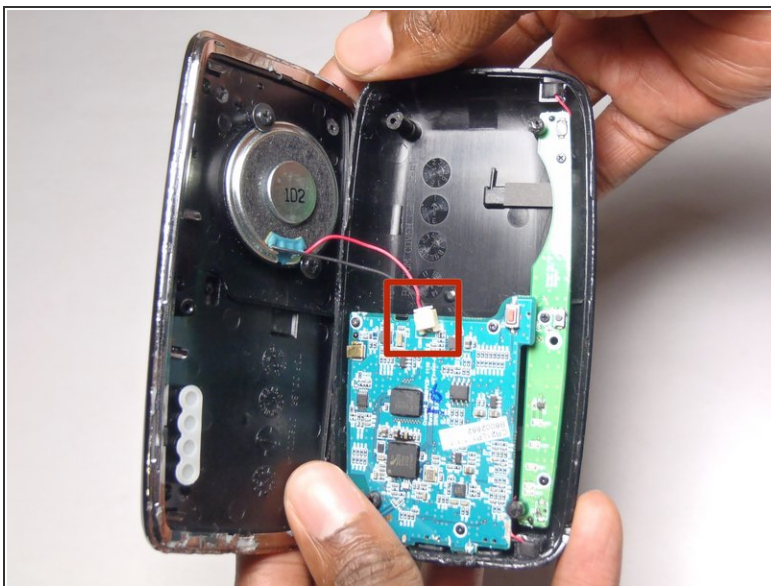
- Place the flat head of the bigger plastic opening tool in between the front plate and back plate.
- Pull the tool toward the back of the device to pry it open.
- Repeat this process over all edges of the device.

Step 3



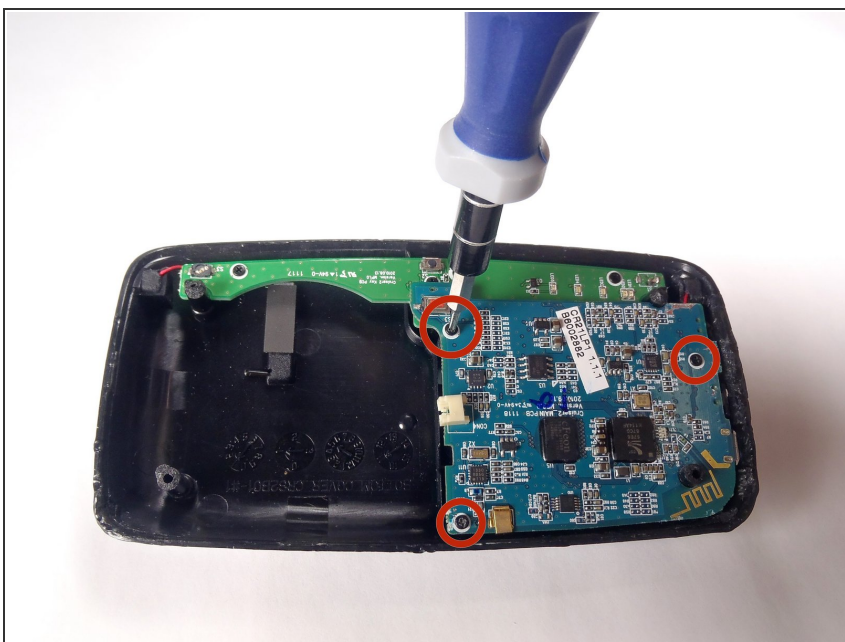
- Open up the device by pulling the front plate straight up from the back plate.

Step 4 — Motherboard



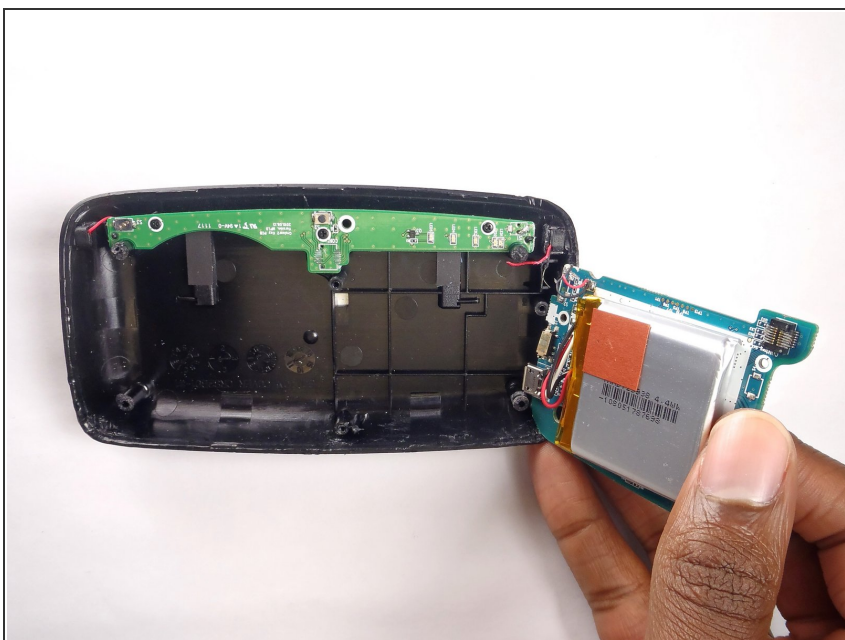
- Carefully detach the wire running from the speaker to the motherboard by unplugging it from the white socket.

Step 5



- Using the PH000, unscrew the three 4.55 mm screws in the motherboard.
- The names of the screwdriver heads are listed on the sides of each head.

Step 6



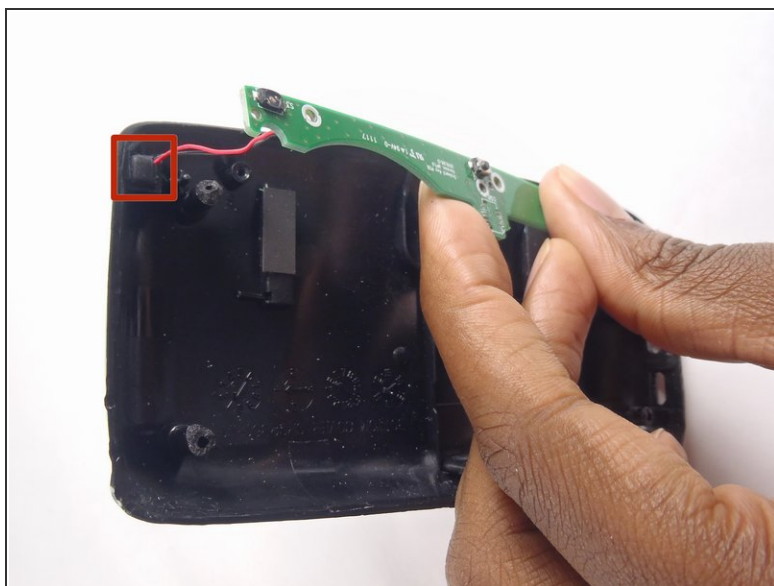
- Remove the motherboard from the device by lifting it up from the back plate.

Step 7 — Status Display



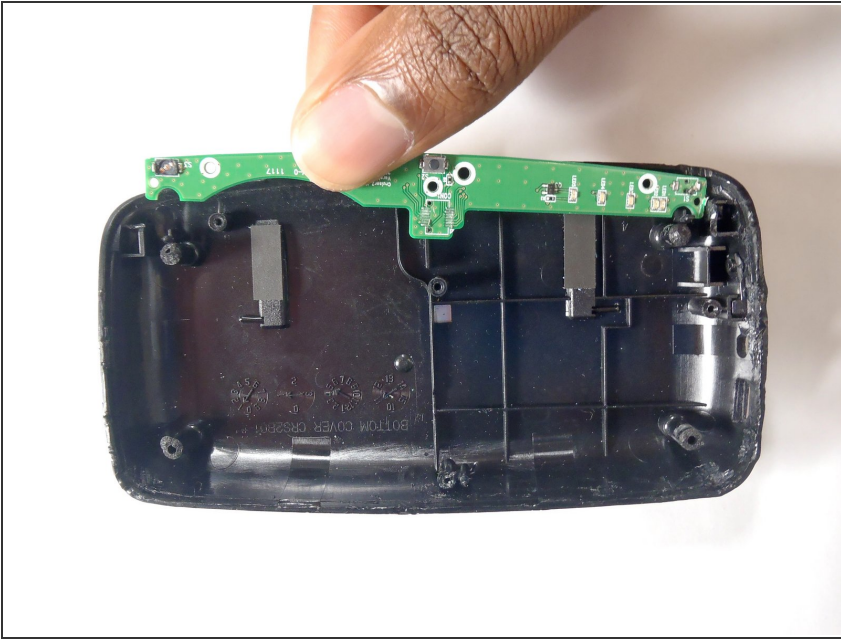
- Using the PH000, unscrew the three 4.6mm screws in the status display.

Step 8



- Disconnect the wires connecting the status display to the back plate. Do this by pulling the wire from the black socket.
- Do this with the wires on both sides of the status board.

Step 9



- Remove the status display by lifting it off of the back plate.

To reassemble your device, follow these instructions in reverse order.