



Asus PadFone S Front Facing Camera Replacement

This guide will show how to replace the Front-Facing Camera of the Asus PadFone S.

Written By: Everette Gonsalves



INTRODUCTION

This guide will show you how to remove the front camera of your Asus PadFone S. Some common tools are required for this replacement so make sure you have them before you start. You must also remove the battery and logic board beforehand. This guide will make it easy to replace a broken or damaged front camera to get your phone working again.



TOOLS:

- [iFixit Opening Tools](#) (1)
 - [T5 Torx Screwdriver](#) (1)
 - [Tweezers](#) (1)
-

Step 1 — Remove the Back Panel



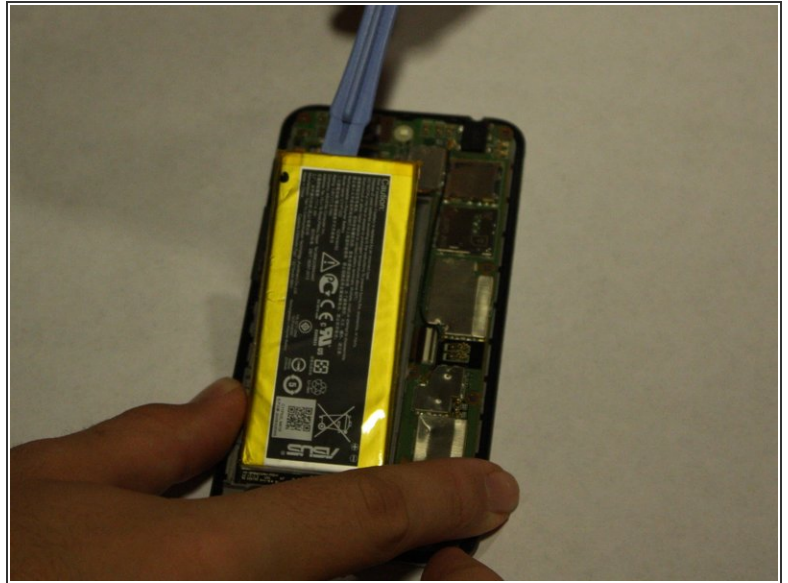
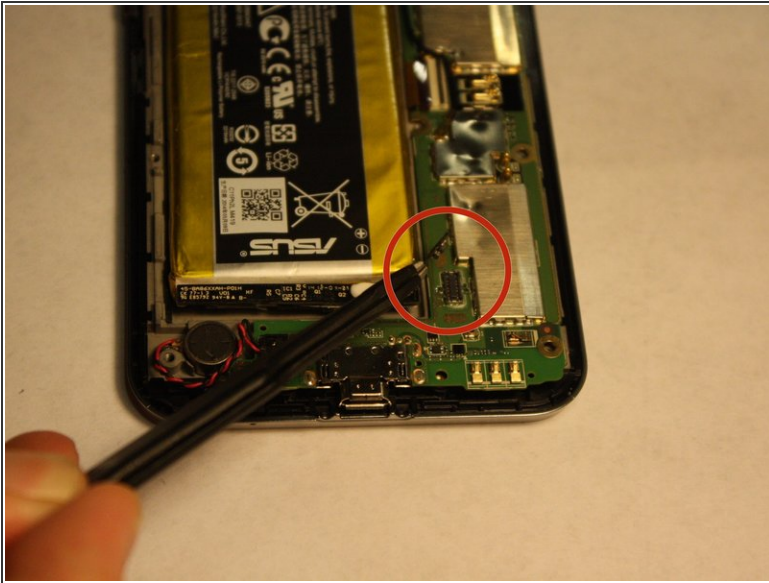
- Place your thumb in the charging port and pry the back cover off of the phone.

Step 2 — Remove the Back Panel



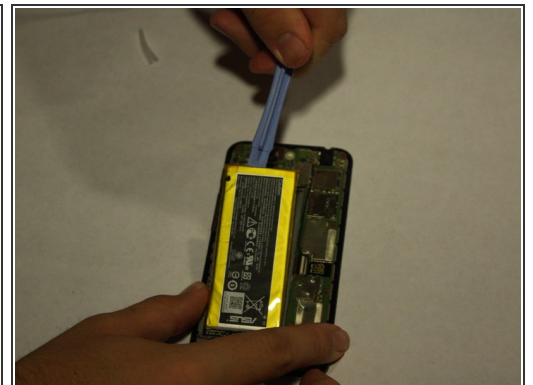
- Remove all screws using the T5 Torx screwdriver
- Lift the back panel off the phone.

Step 3 — Remove the Battery



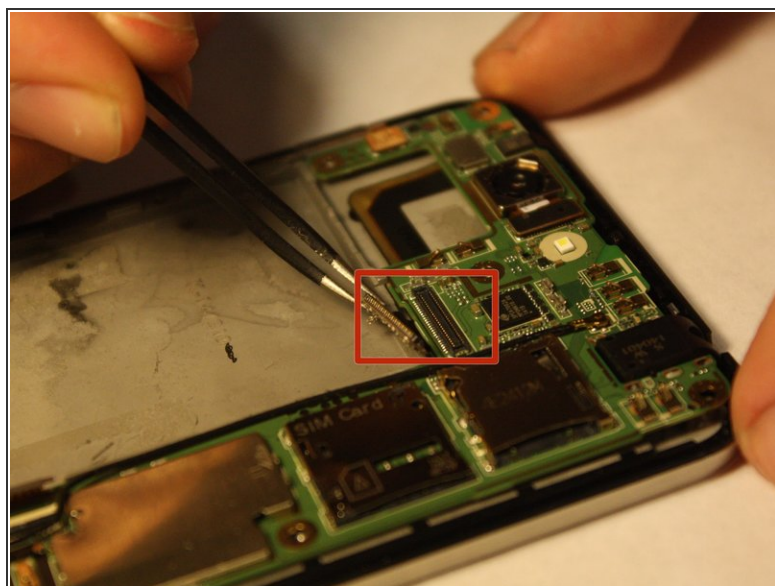
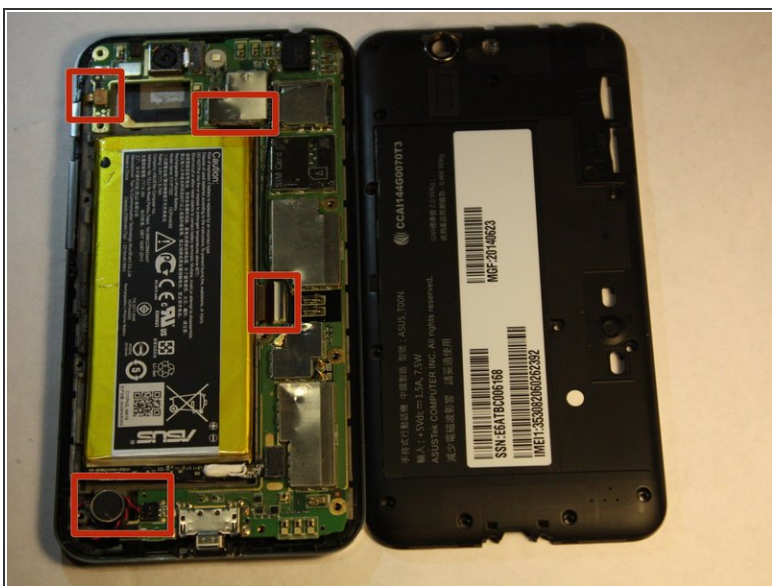
- Disconnect the battery from the logic board using tweezers
 - Using the plastic opening tools, lift the battery up from its slot
- ⚠ Apply consistent, steady force to lift the battery from its slot. Be careful not to damage the battery while removing it.

Step 4 — Front Facing Camera



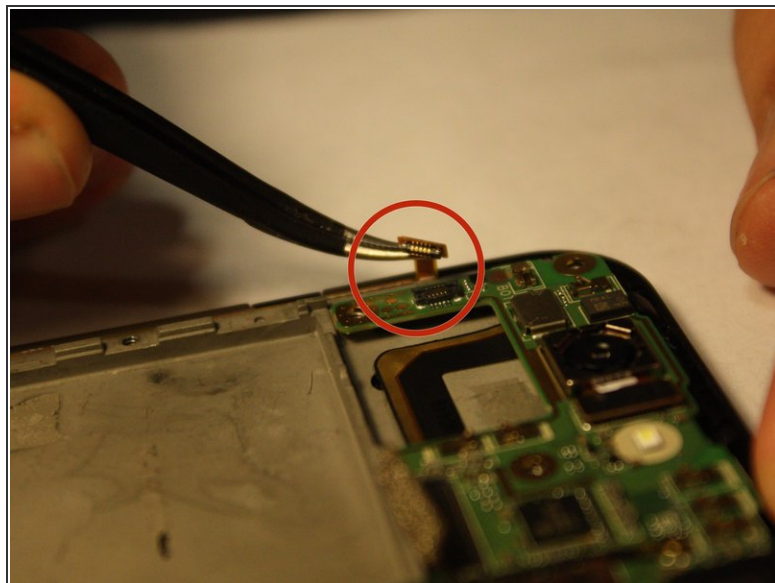
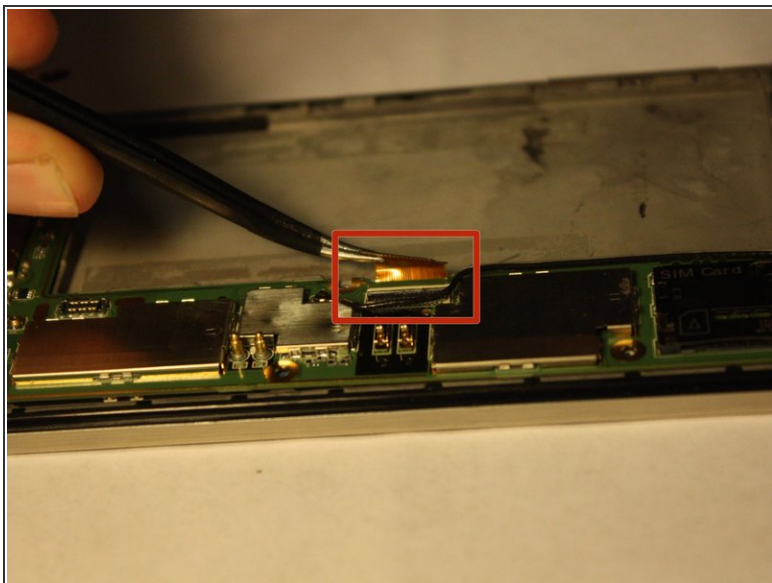
- Once the Battery has been successfully removed, move on to the step 2.

Step 5 — Start of Logic Board Removal



- Disconnect the marked strips from the logic board using the tweezers.
- ⚠ Applying too much force may damage the strips/connectors.
- Remember to remove speaker connection located at the bottom left hand corner.

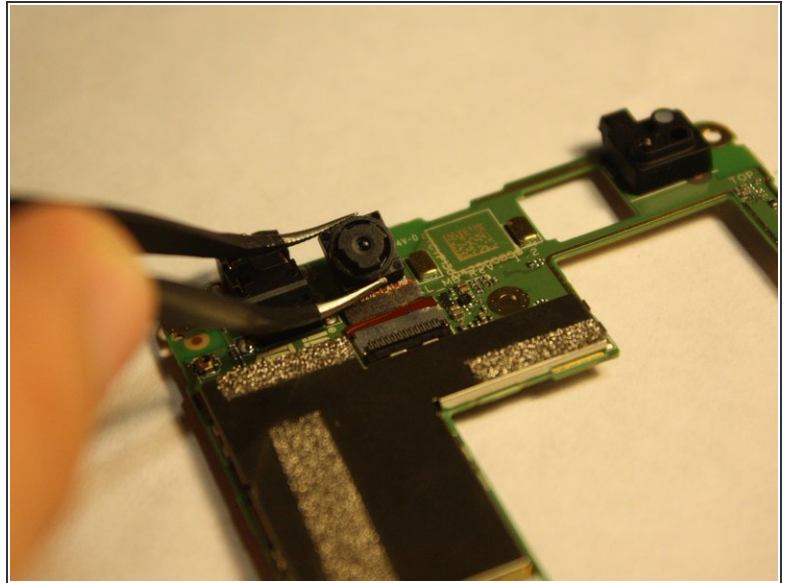
Step 6 — Logic Board Removal - Continued



- Disconnect the other two strips that connect the logic board to the phone.

⚠ Applying too much force may damage the strips/connectors.

Step 7 — Remove The Camera



- Turn over the logic board to locate the front camera.
 - Grasp the sides of the camera with the tweezers and carefully remove the camera from the logic board.
- ⚠ Applying too much force will damage the connective strip.

To reassemble your device, follow these instructions in reverse order.