



LG Motion 4G MS770 Motherboard Replacement

Replacing a faulty or broken motherboard.

Written By: Zarna Patel



INTRODUCTION

If phone will not turn on or has system errors and the troubleshooting did not help then replace the broken motherboard with a new one.



TOOLS:

- [iFixit Opening Tools](#) (1)
- [Phillips #00 Screwdriver](#) (1)
- [Tweezers](#) (1)



PARTS:

- [New motherboad](#) (1)

Step 1 — Remove the phone's back cover.



- Use a plastic opening tool to remove the back cover.

Step 2 — Remove the battery.



- Use a plastic opening tool to remove the battery, lifting from the bottom right corner.

Step 3 — Remove screws.



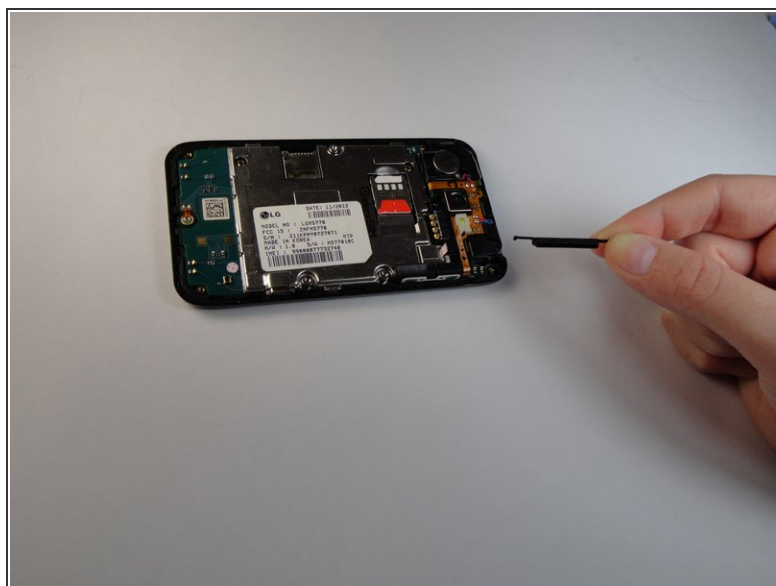
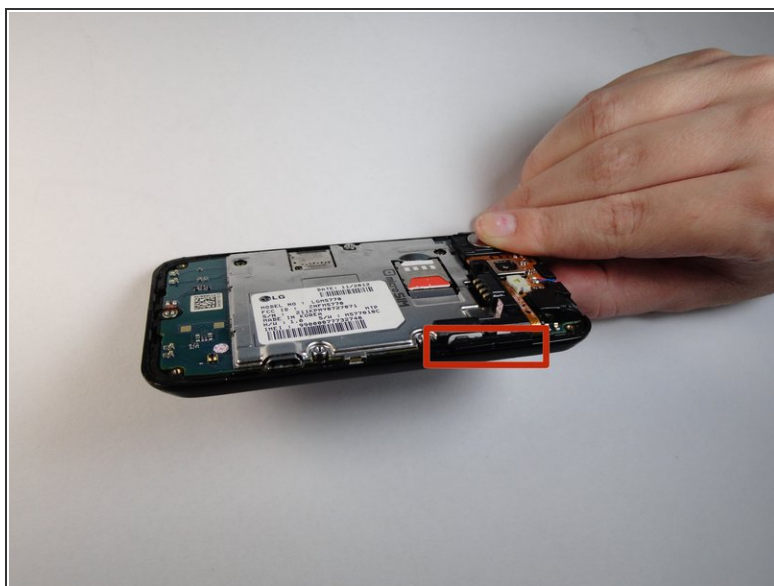
- Use a Phillips #00 Screwdriver to remove all eight 4mm screws.

Step 4



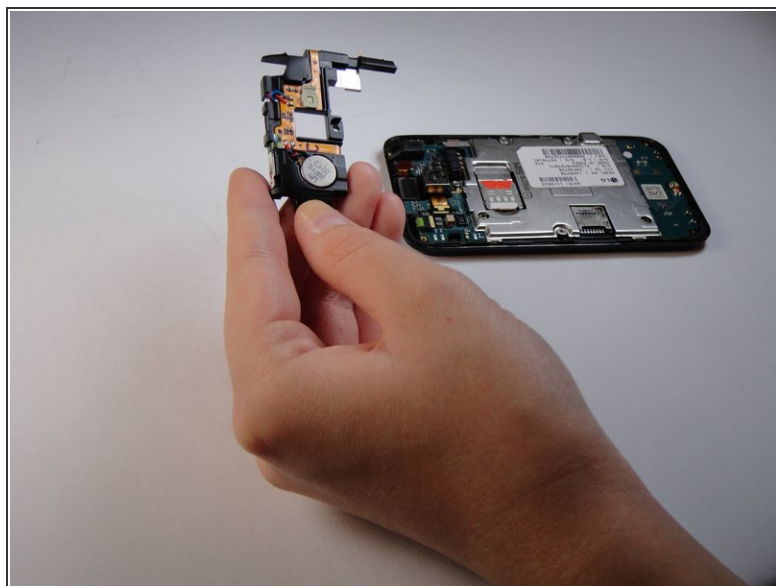
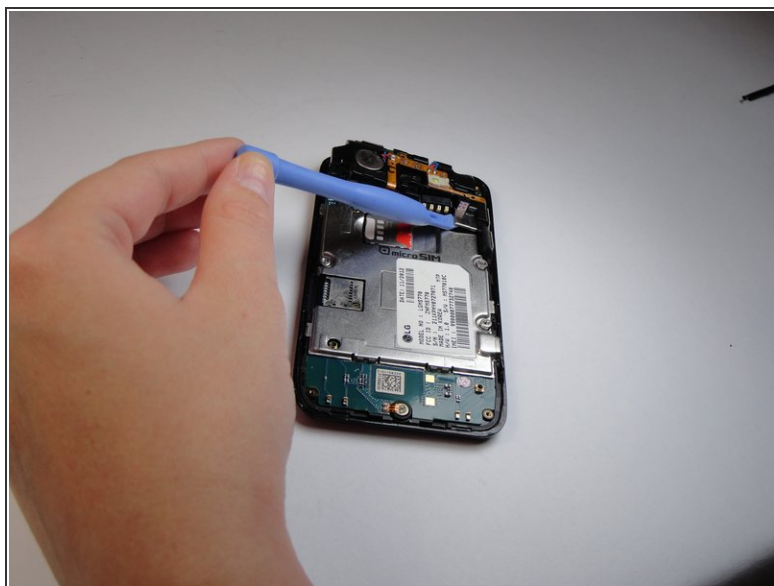
- Use a plastic opening tool to remove the back trim by working around all of the edges.

Step 5



- Remove the volume buttons from the side.

Step 6 — Speaker



- Use a plastic opening tool to lift the speaker off by prying under the silver square as shown.

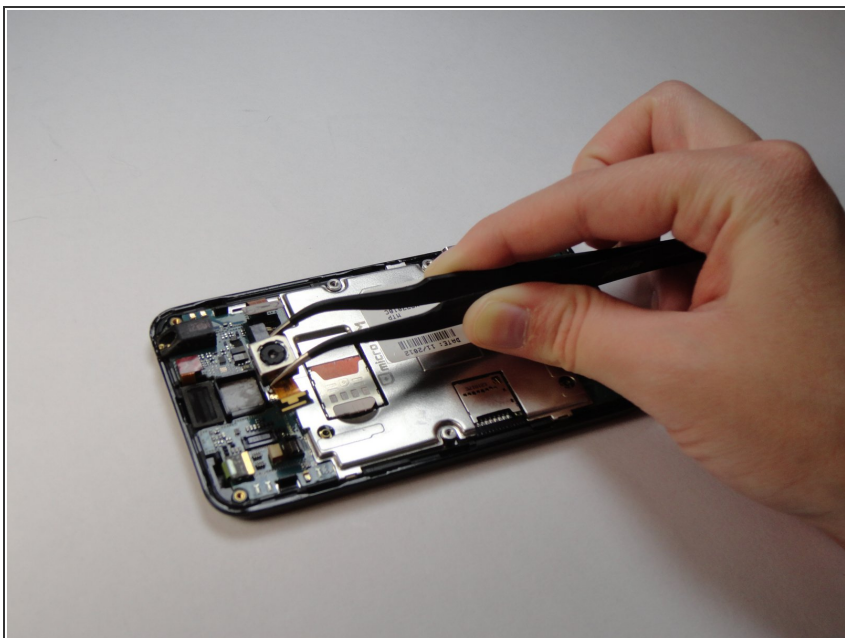
i Note: There is a small tab underneath the speaker that will be lifted off when the speaker is removed.

Step 7 — Rear Facing Camera



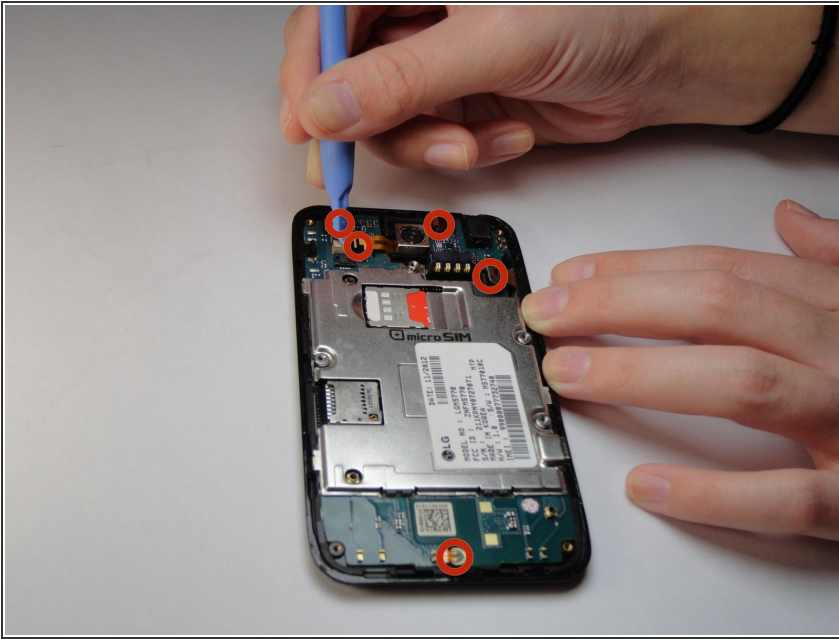
- Pry slightly underneath the tab attached to the camera until it pops off.

Step 8



- Use tweezers to remove the camera, you will need to use some force as it is glued on.

Step 9 — Motherboard



- Pry off the circled tabs using a plastic opening tool to release the motherboard.

Step 10



- Lift the motherboard off of the phone. It should come right out.

To reassemble your device, follow these instructions in reverse order.