



LG G3 Rear Facing Camera Replacement

Replacing the rear-facing camera.

Written By: Shannon



INTRODUCTION

The rear-facing camera may be causing problems due to either the ribbon cable not being connected properly or because the camera is broken. This guide should help you fix both problems.



TOOLS:

- [Spudger](#) (1)
- [iFixit Opening Picks set of 6](#) (1)
- [Phillips #00 Screwdriver](#) (1)
- [iFixit Opening Tools](#) (1)



PARTS:

- [LG G3 Rear Facing Camera](#) (1)

Step 1 — Back Cover



- ⓘ Power off your phone before beginning disassembly.
- Insert a thumbnail, or a prying tool like a spudger, into the notch at the bottom left of the back cover.
- Pry the back cover up to separate its plastic clips.

Step 2



- Lift the back cover to release the rest of the plastic clips and remove it.
- ❗ In case you can't lift the back cover completely, slide your fingernail or your prying tool around the midframe to release the remaining clips.
- 🔧 To reinstall the back cover, press it firmly into place until you hear a snap from the plastic clips to form a seamless connection with the rear side of the phone.

Step 3 — Battery



- Use a fingernail or a prying tool at the marked notch to lever the battery out of its recess.

Step 4



- Lift the battery out of its recess and remove it.

Step 5 — Loudspeaker



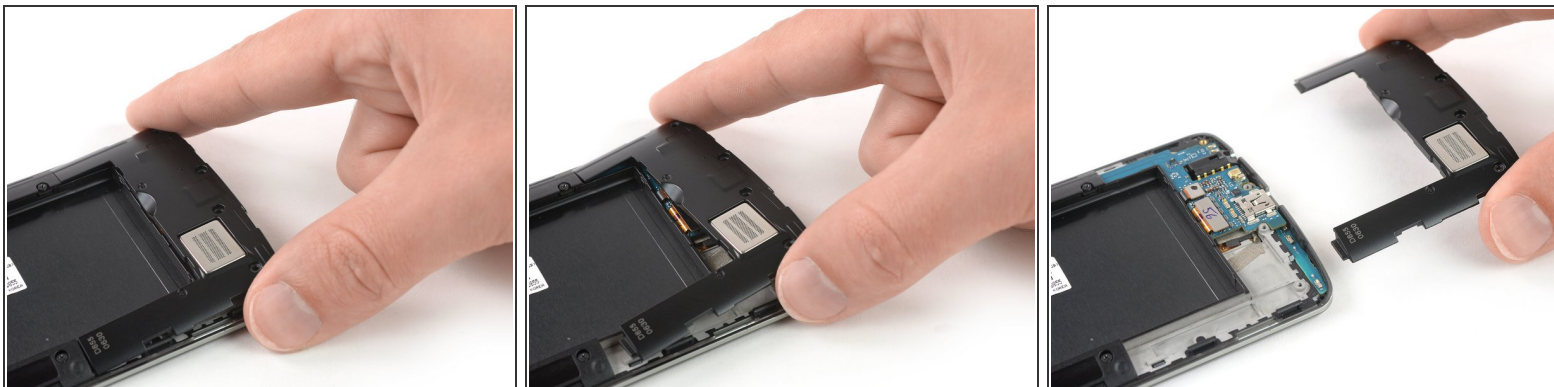
- Remove the four Phillips #00 screws (4 mm length).

Step 6



- Insert a thumbnail, or a prying tool like a spudger, into the notch at the bottom left of the back cover you used earlier to remove the back cover.
- Pry up the plastic panel, including the loudspeaker, until you can get a good grip.

Step 7



- Carefully remove the plastic panel including the loudspeaker by gently pulling it away from the phone assembly.

Step 8 — Motherboard Cover Assembly



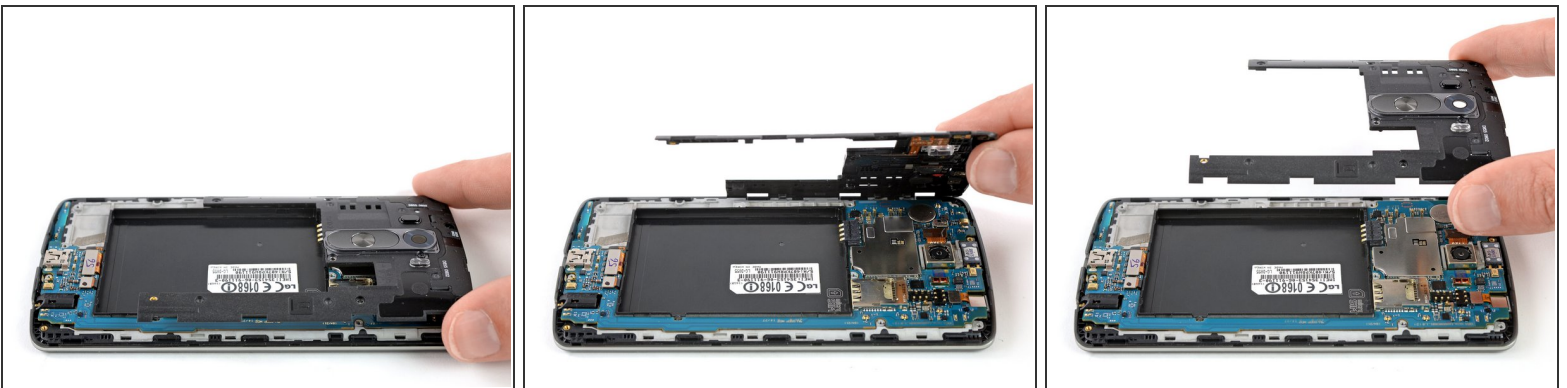
- Remove the eight Phillips #00 screws (4 mm length).

Step 9



- Insert an opening pick between the bottom right corner of the motherboard cover and the motherboard.
- Pry up the motherboard cover to open the plastic clips which hold the cover in its place.
 - ❗ The clips can be a bit resistive. If you're having trouble prying up the motherboard cover, slightly rotate the opening pick sideways to make the process easier.
- Work your way along the right edge.

Step 10



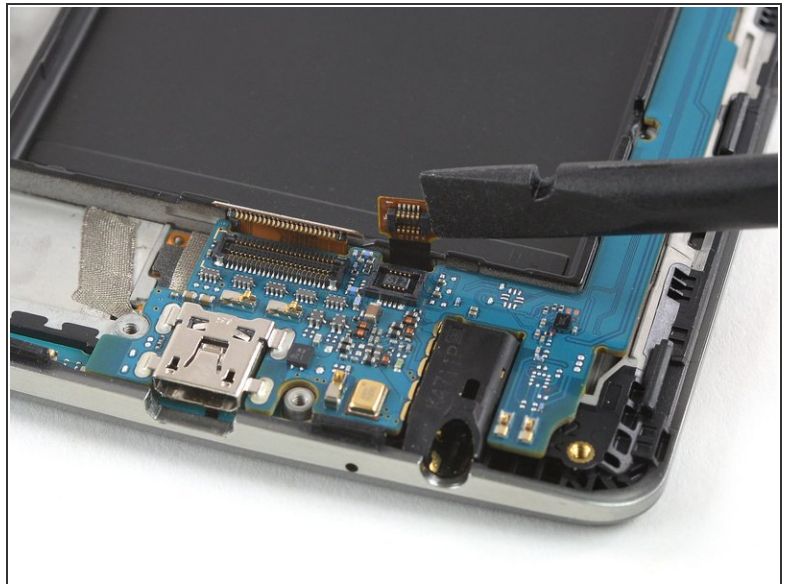
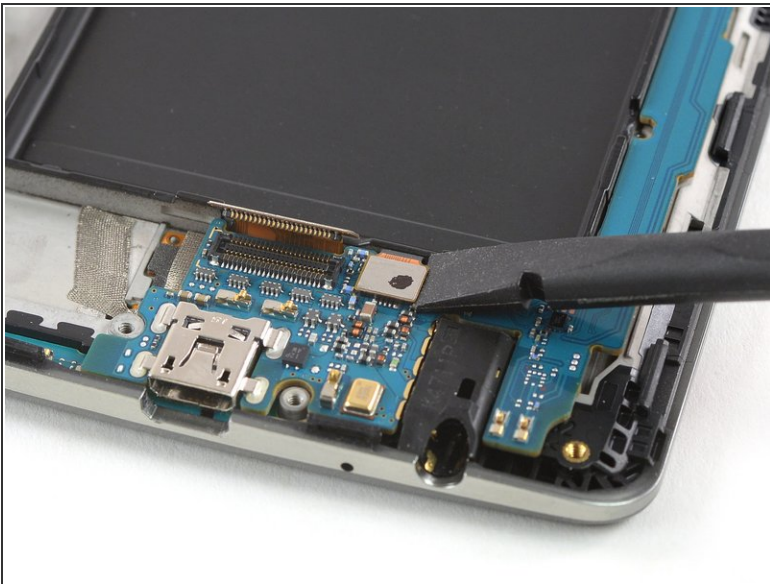
- Carefully lift the right edge of the motherboard cover.
 - ❗ The remaining plastic clips should open during this process or can be unhinged easily by hand.
- Remove the motherboard assembly.

Step 11 — Motherboard



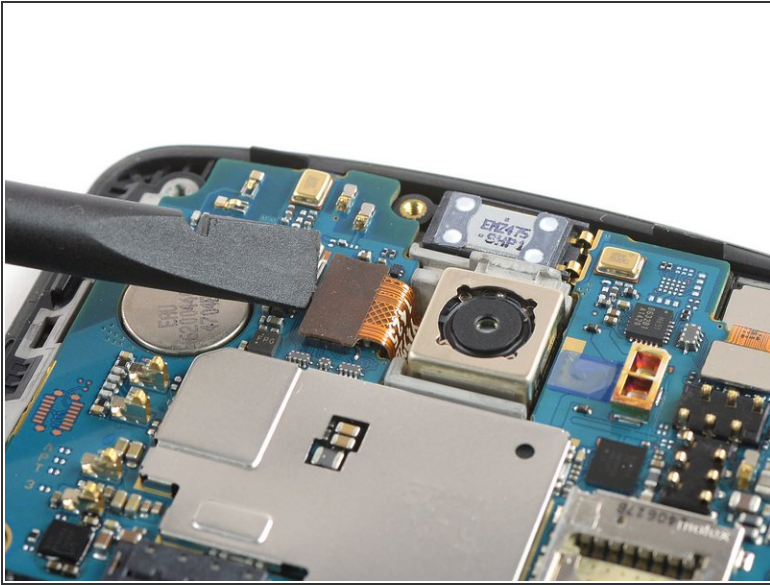
- Use a spudger to pry up and disconnect the display flex cable.

Step 12



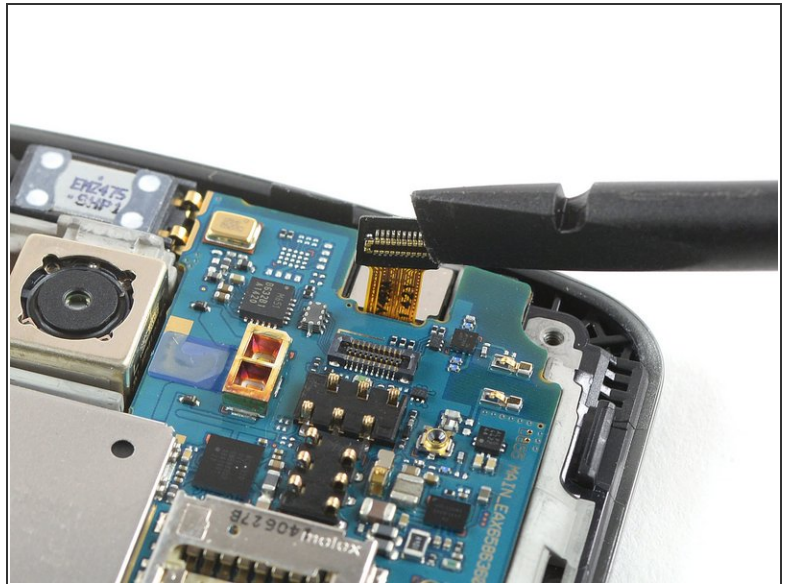
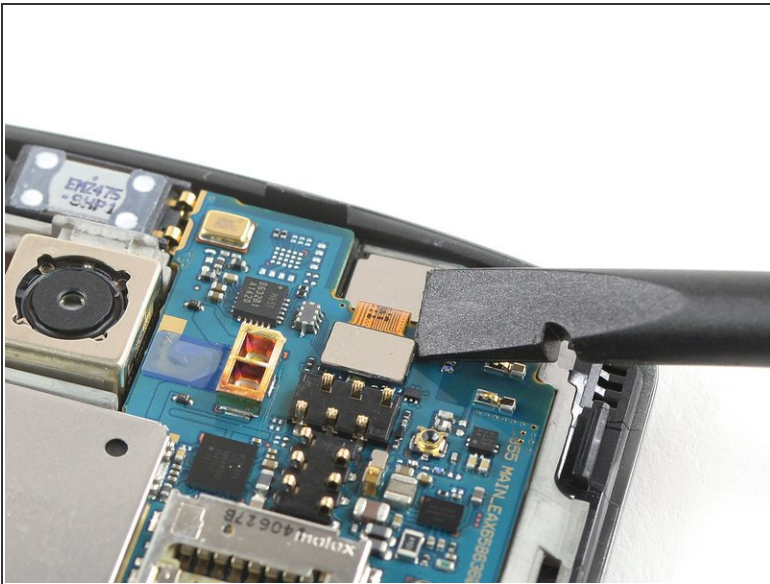
- Use a spudger to pry up and disconnect the digitizer flex cable.

Step 13



- Use a spudger to pry up and disconnect the rear camera flex cable.


Step 14



- Use a spudger to pry up and disconnect the front camera flex cable.

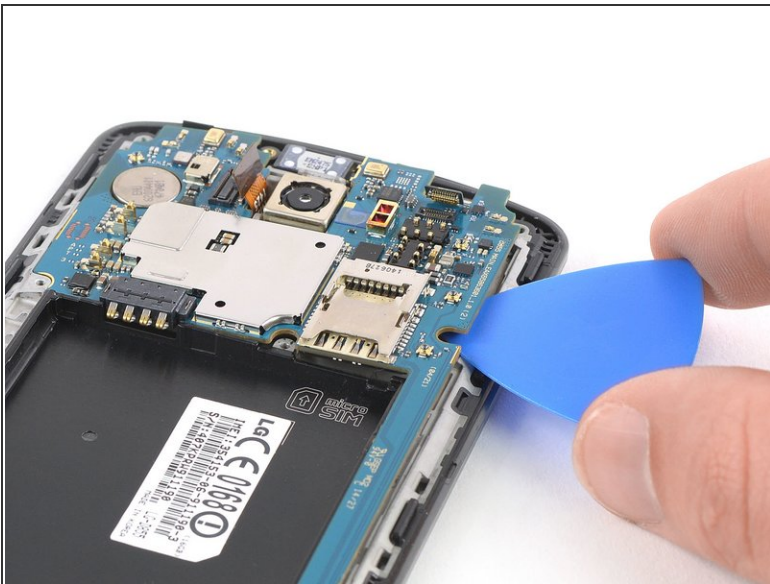
Step 15



 During these next few steps, make sure to avoid damaging the flex cables you disconnected.

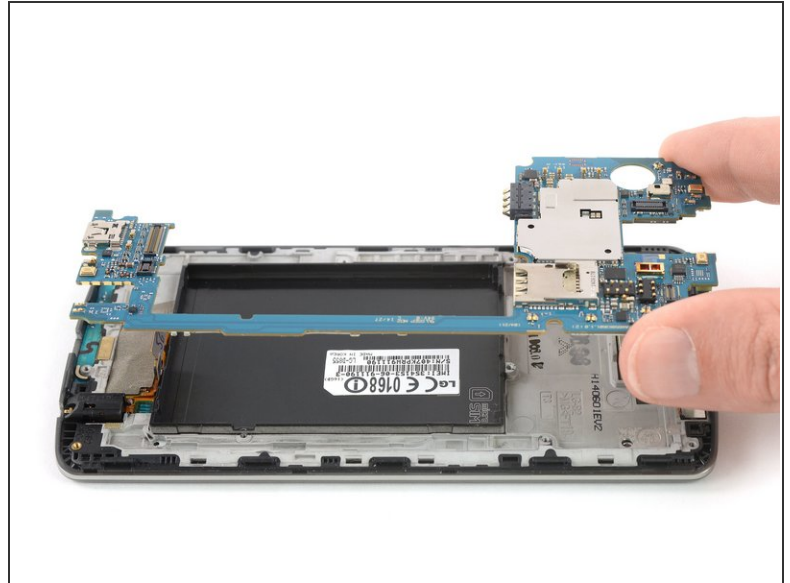
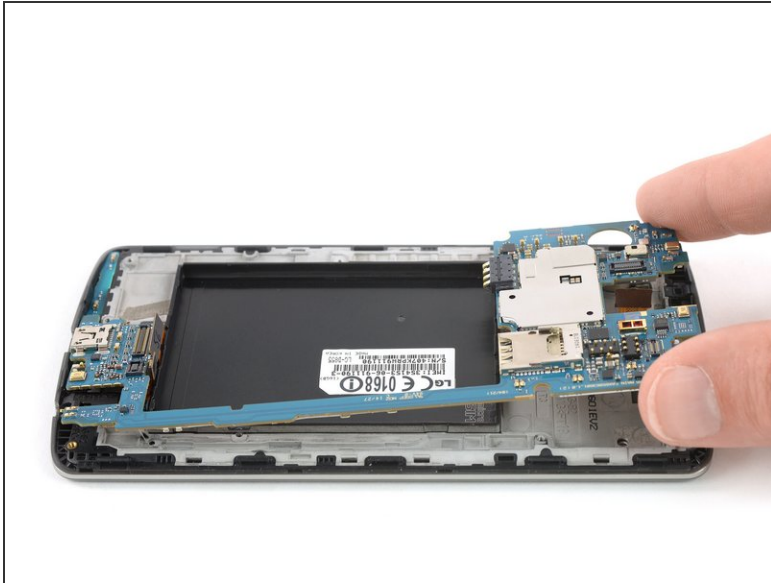
- Slide an opening pick under the bottom right corner of the motherboard and slowly pry it out of its recess by rotating the opening pick sideways.

Step 16



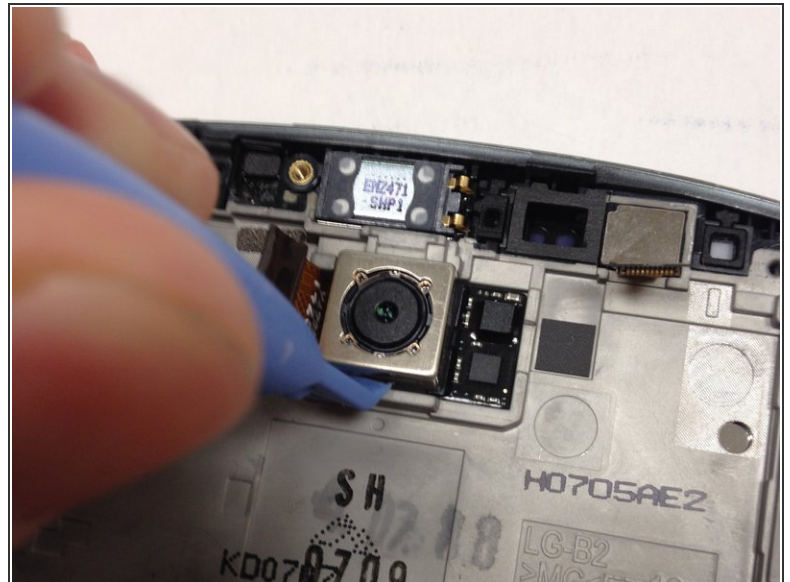
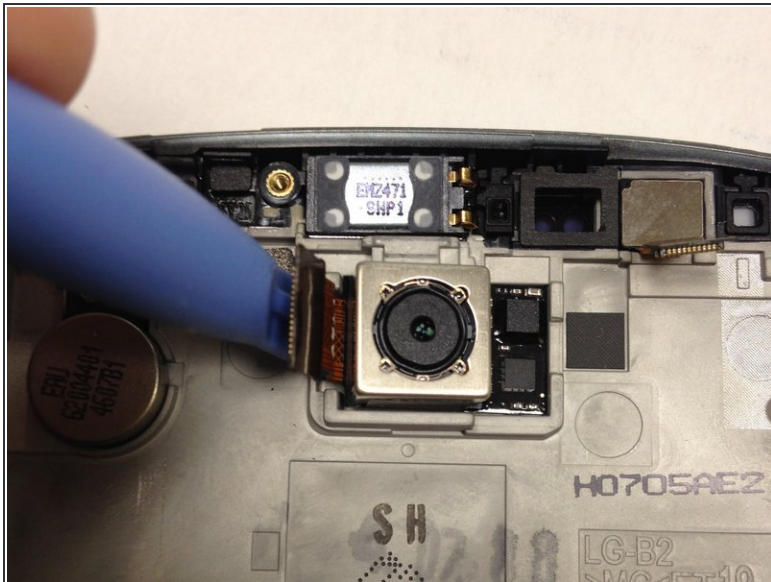
- Slide the opening pick under the right edge of the motherboard where the SIM card slot is located and pry it up by rotating the opening pick sideways.

Step 17



- Grab the top section of the motherboard and carefully lift it out of the phone.

Step 18 — Rear Facing Camera



- Take the plastic opening tool and remove the rear-facing camera by wedging it into the sides and lifting up
- ⓘ The rear-facing camera is kept in place with a double-sided tape, so it may take some time and effort to get it out. Attack it from all sides

This document was generated on 2020-11-28 04:03:10 AM (MST).

Step 19



- Remove the old rear-facing camera

To reassemble your device, follow these instructions in reverse order.