



Jabra CRUISER2 Motherboard Replacement

Follow this guide to remove the motherboard from the device if it needs to be replaced or repaired.

Written By: Spartacus



INTRODUCTION

The motherboard is the most important part of the Jabra CRUISER2. It controls the device. This guide will tell you step-by-step how to remove the motherboard so you can replace it with a functioning one.



TOOLS:

- [Phillips #000 Screwdriver](#) (1)
 - [iOpener](#) (1)
 - [iFixit Opening Tools](#) (1)
 - [Microwave](#) (1)
 - [Soldering Iron](#) (1)
-

Step 1 — Front Plate



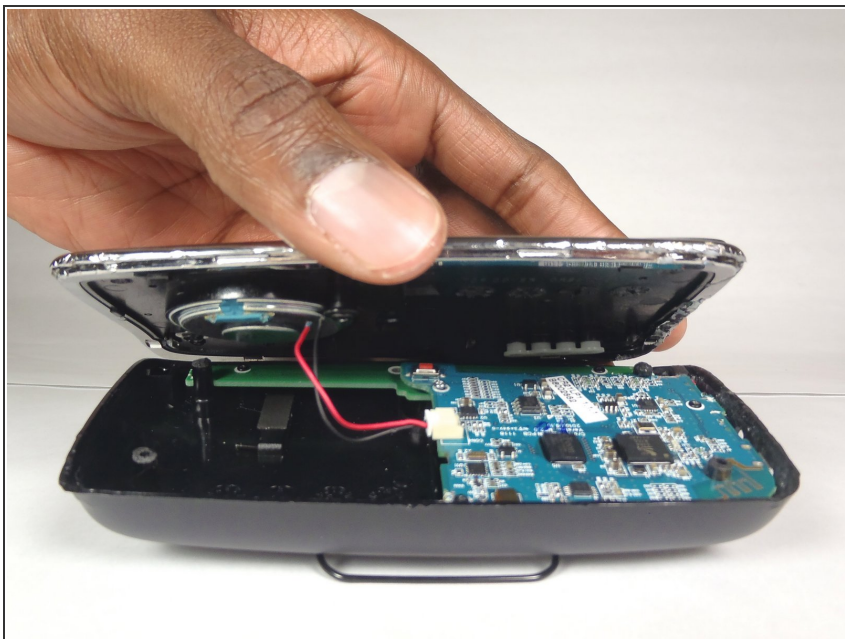
- Use the iOpener tool to unglue the adhesive of the device. The link to the iOpener instructions are listed below.
- [iOpener Instructions](#)

Step 2



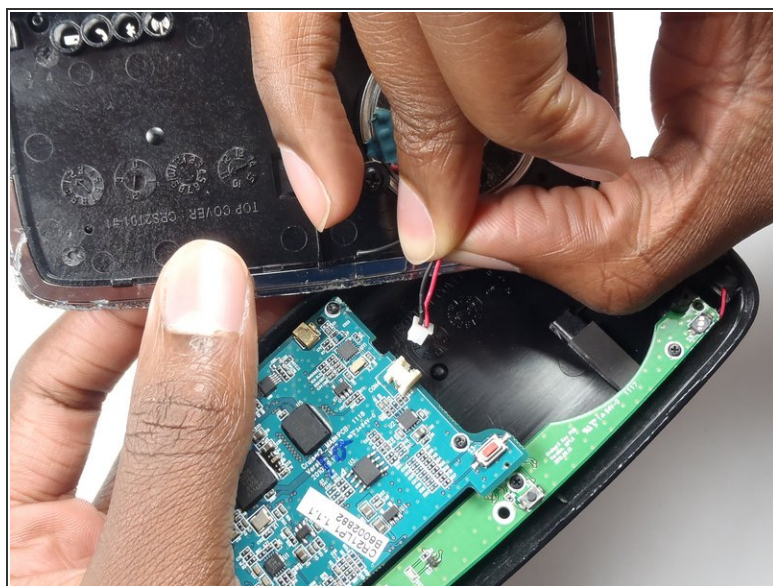
- Place the flat head of the bigger plastic opening tool in between the front plate and back plate.
- Pull the tool toward the back of the device to pry it open.
- Repeat this process over all edges of the device.

Step 3



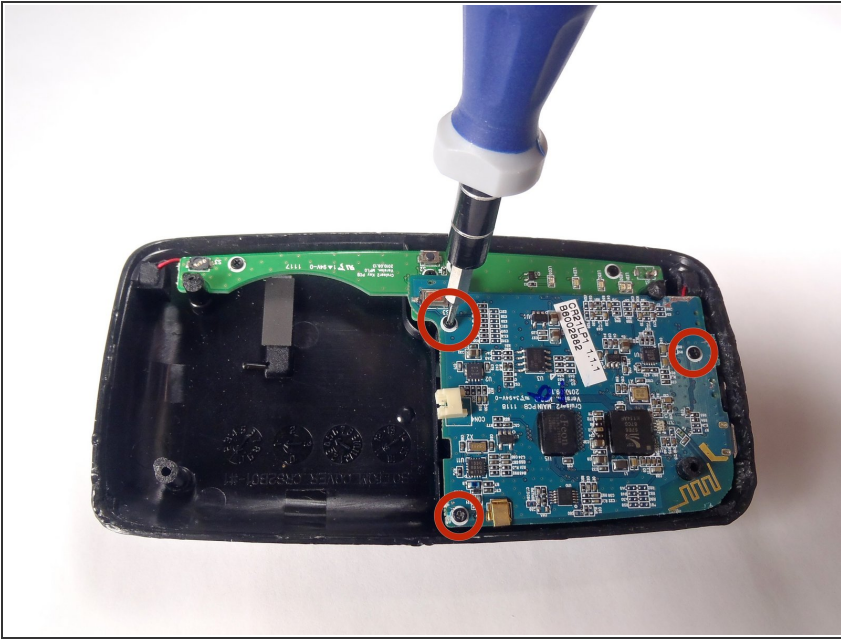
- Open up the device by pulling the front plate straight up from the back plate.

Step 4 — Motherboard



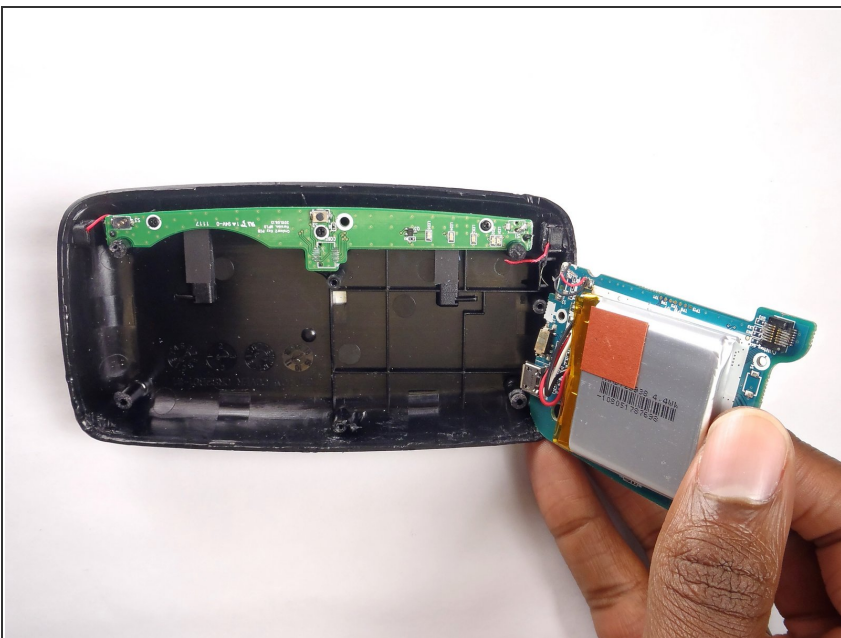
- Carefully detach the wire running from the speaker to the motherboard by unplugging it from the white socket.

Step 5



- Using the PH000, unscrew the three 4.55 mm screws in the motherboard.
- The names of the screwdriver heads are listed on the sides of each head.

Step 6



- Remove the motherboard from the device by lifting it up from the back plate.

To reassemble your device, follow these instructions in reverse order.