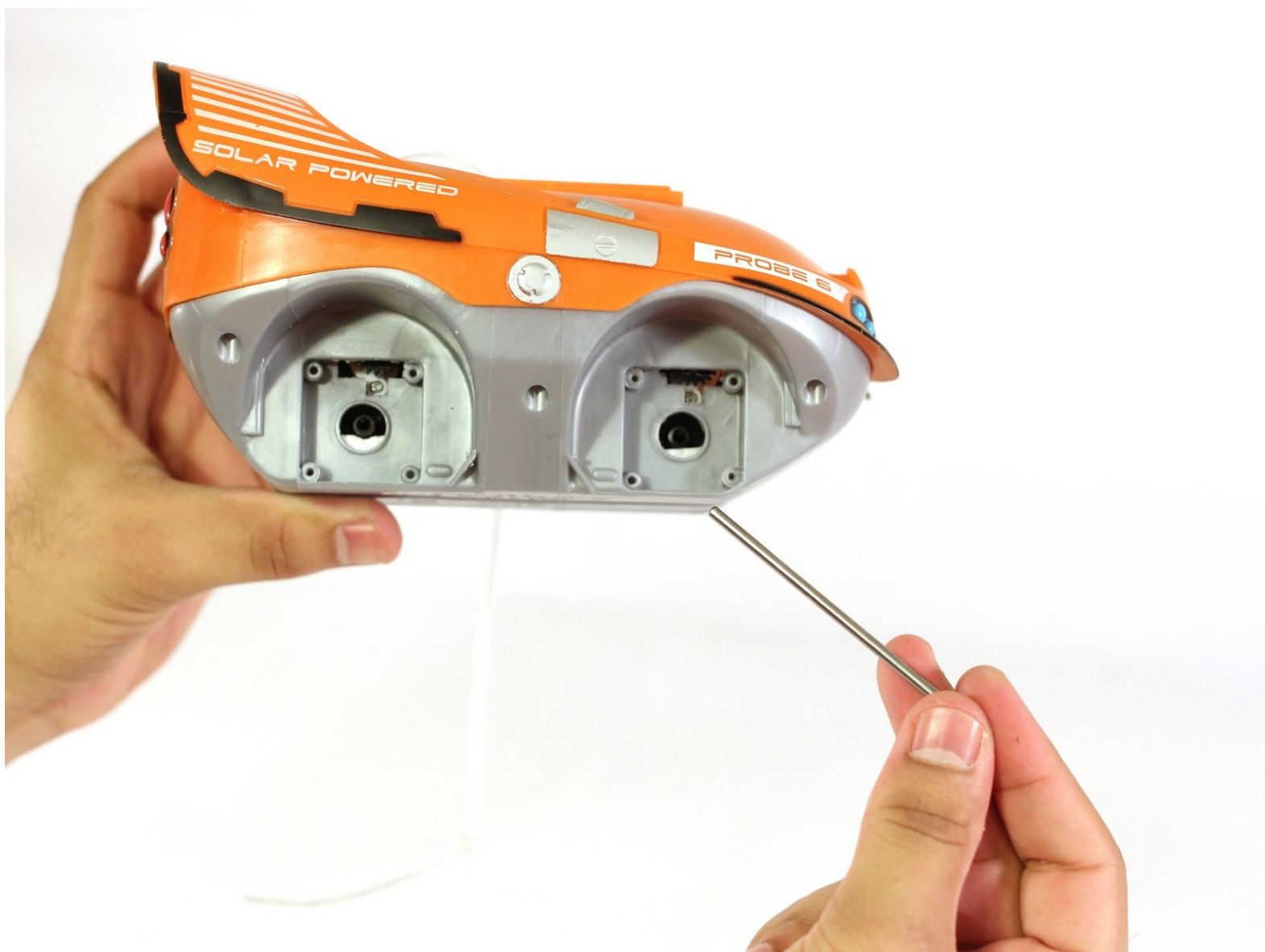




Kid Galaxy Morphibians Explorer Axle Replacement

Replacing the driving axles of the Kid Galaxy Morphibians Explorer.

Written By: Rusbell Gonzalez





PARTS:

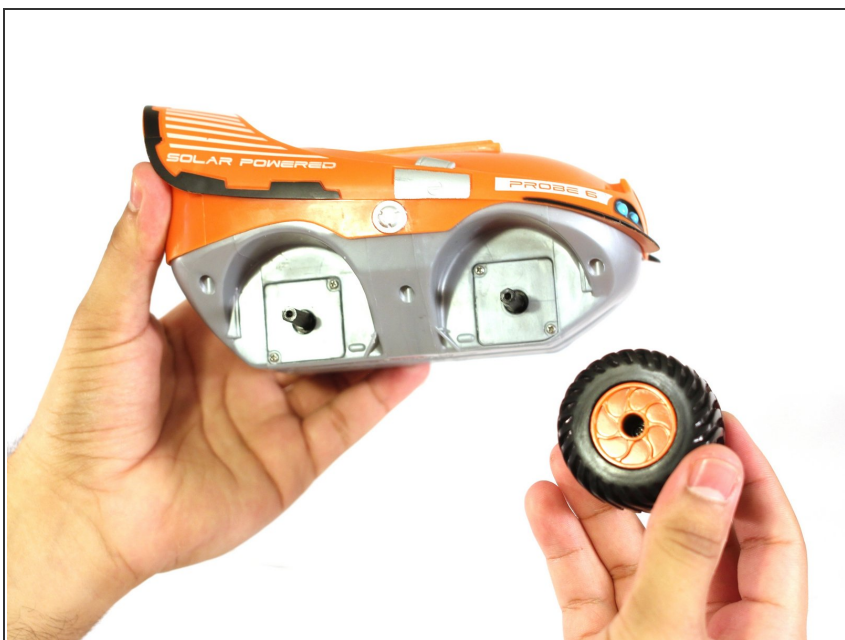
- [Phillips #00 Screwdriver](#) (1)
- [Phillips #1 Screwdriver](#) (1)

Step 1 — Axle



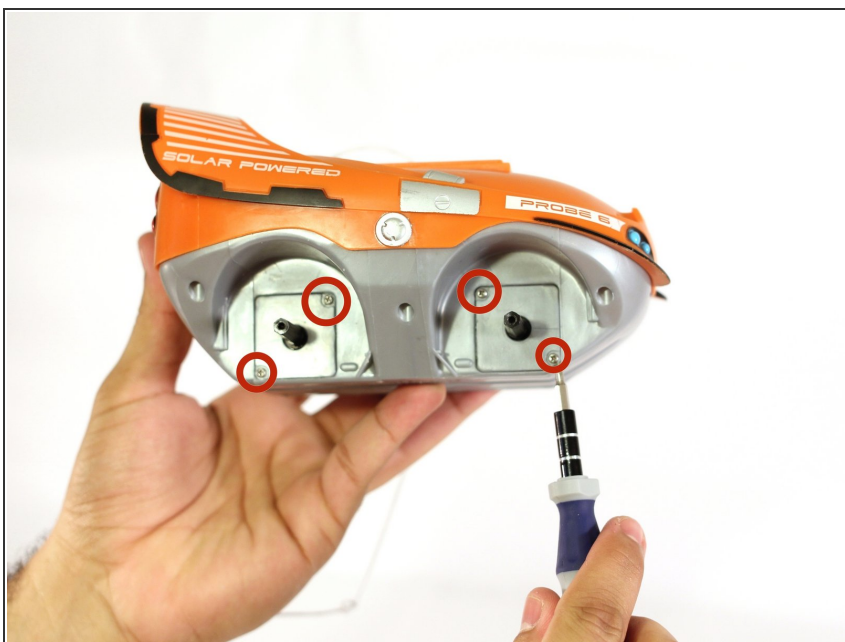
- Remove both 8.0 mm Phillips #1 screws, one for each wheel.

Step 2



- Remove the wheels by pulling them away from the RC car.

Step 3



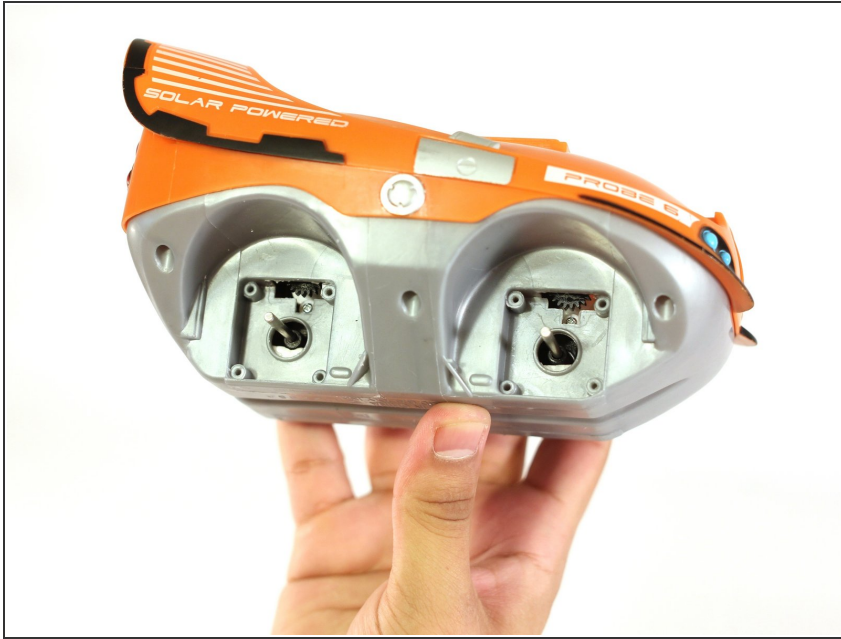
- **i** Make note of where each driving gear cover is placed. They only go in one way.
- Remove the eight 8.0mm Phillips #00 screws, two screws for each wheel.

Step 4



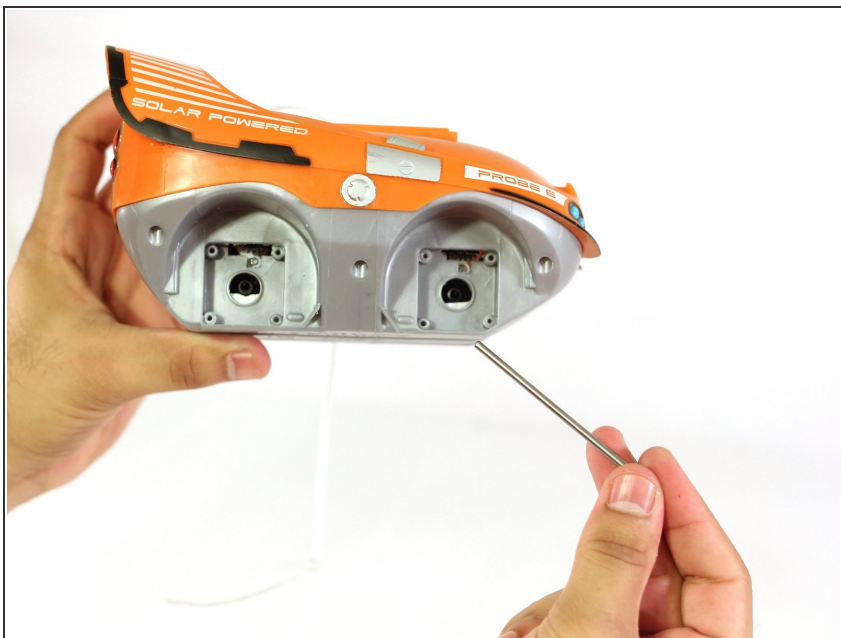
- Pry open the two gear covers on both sides.

Step 5



- Pull the driving gears off the axles by sliding them off the axles and exposing both axles.

Step 6



- Slide both axles from the internal axles guides within the car.
- Reverse the steps to replace the axles.

To reassemble your device, follow these instructions in reverse order.