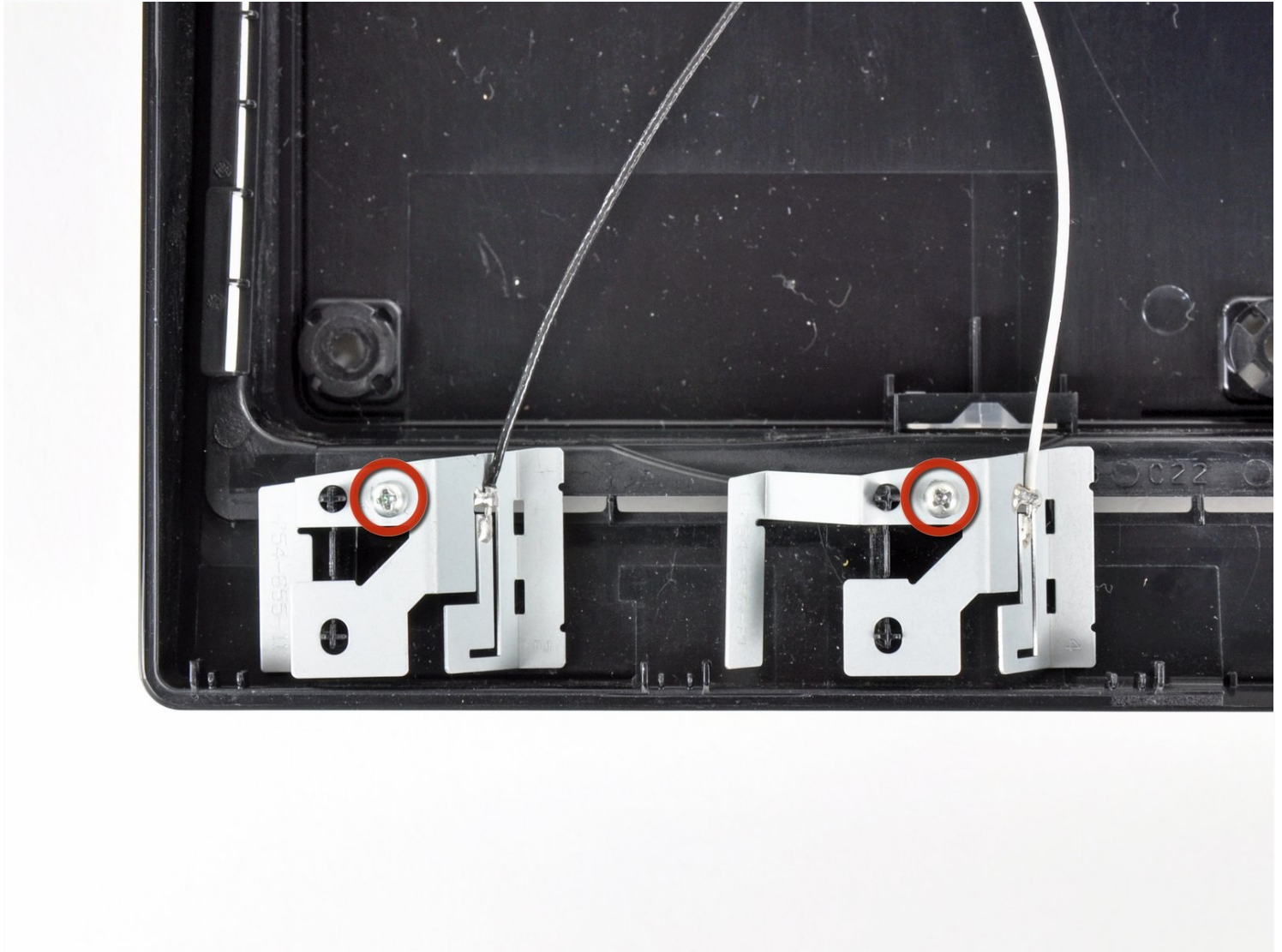




PlayStation 3 Slim Lower Case Replacement

Use this guide to replace the plastic lower...

Written By: Andrew Bookholt



INTRODUCTION

Use this guide to replace the plastic lower case of your PlayStation 3 Slim.

TOOLS:

Metal Spudger (1)

Phillips #1 Screwdriver (1)

Spudger (1)

T8 Torx Security Bit Screwdriver (1)

Step 1 — Top Cover



- Turn the PS3 over and lay it on its backside.
- Carefully peel the warranty sticker up off the lower case to reveal a hidden screw cover.
- ☑ To avoid activating the **VOID** that may come up, heat the sticker carefully to remove and replace it cleanly.

Step 2



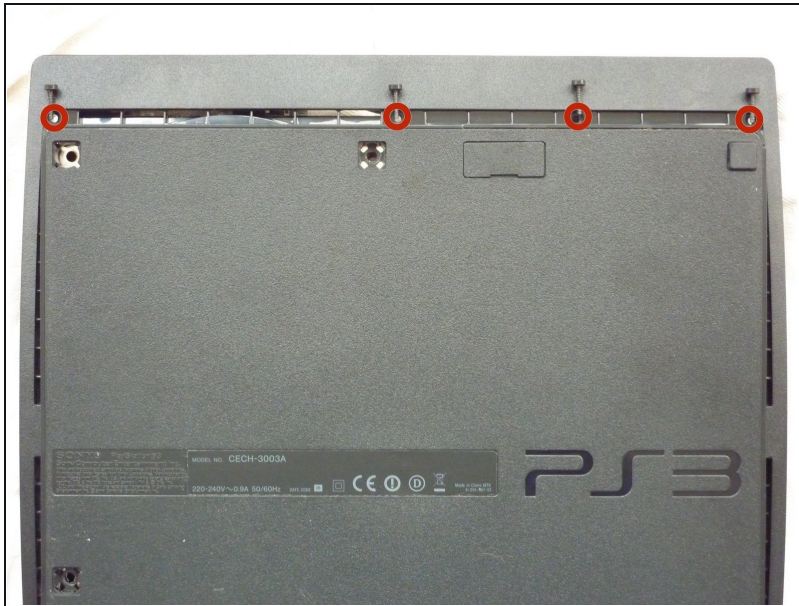
- Use the flat end of a metal spudger to pry up the seven screw covers around the edge of the lower case.

Step 3



- Remove the seven 37 mm Phillips screws securing the top cover to the lower case.

Step 4



- Remove the four 13.3 mm T8 security Torx screws beneath the Blu-ray drive opening. (Some models may only have three screws)

Step 5



- Lift the top cover from its rear edge and rotate it toward the front of the PS3.
- Lift the top cover off the PS3.

Step 6 — Power Supply



- Squeeze the AC inlet connector's locking mechanism and pull straight up to disconnect it from the power supply.

Step 7



- Pull the DC-Out cables straight up to lift their connector up and out of its socket on the power supply.

Step 8



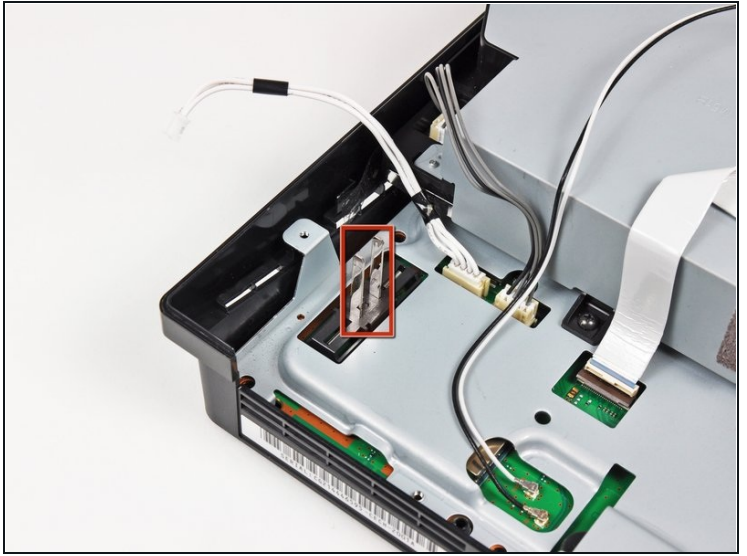
- Remove the two 7.6 mm Phillips screws securing the power supply to the lower case.

Step 9



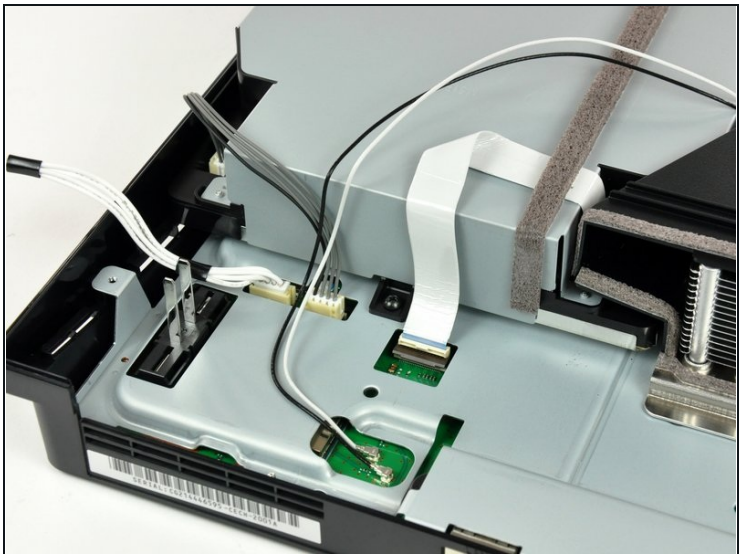
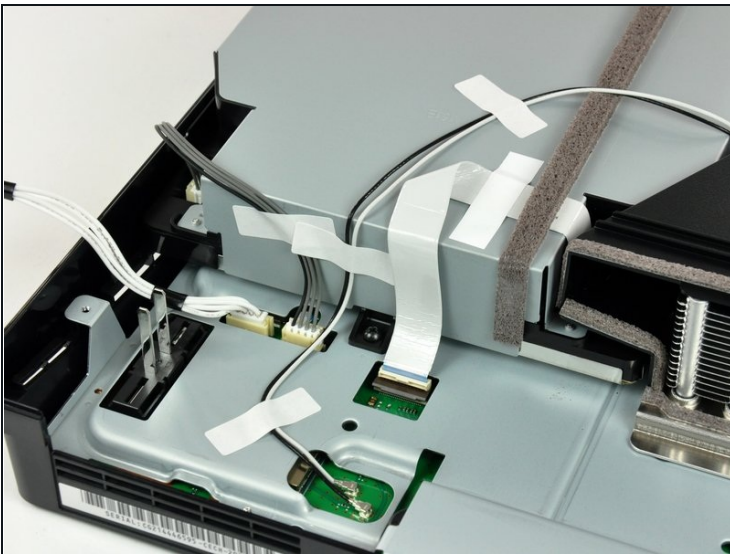
- Lift the power supply upward from its left edge as viewed from the front of the PS3.

Step 10



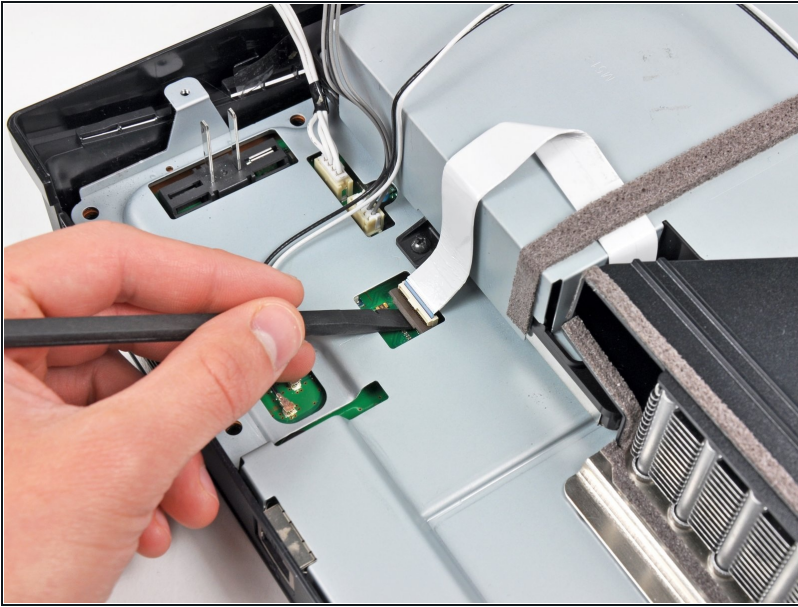
- Continue to lift the left edge of the power supply until it lifts off the two metal posts shown in the second picture.
- Remove the power supply from the PS3, minding any cables that may get caught.

Step 11 — Blu-ray Disc Drive



- ⓘ If present, remove the pieces of tape securing the cables to the body of the Blu-ray drive.

Step 12



- Use the flat end of a spudger or your fingernail to flip up the retaining flap on the Blu-ray ribbon cable socket.

⚠ Be sure you are prying up on the movable retaining flap, **not** the socket itself.

Step 13



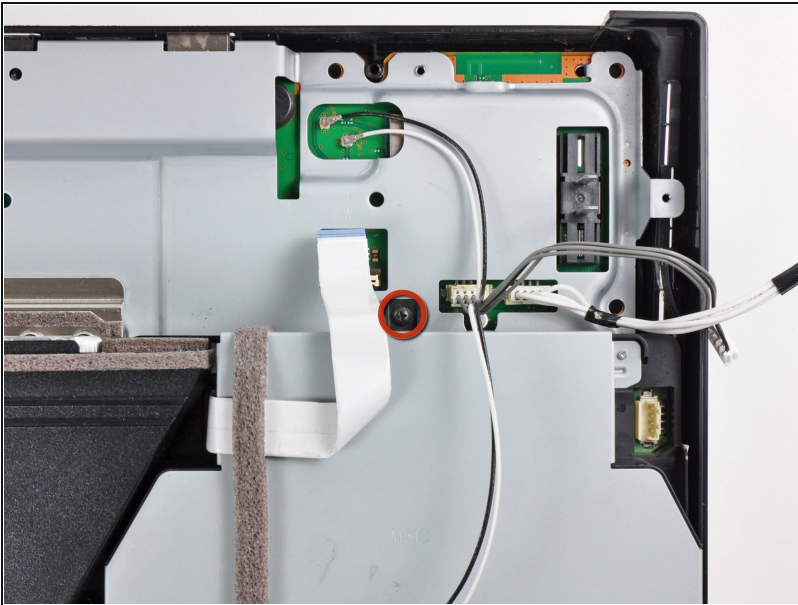
- Pull the Blu-ray ribbon cable straight up and out of its socket.

Step 14



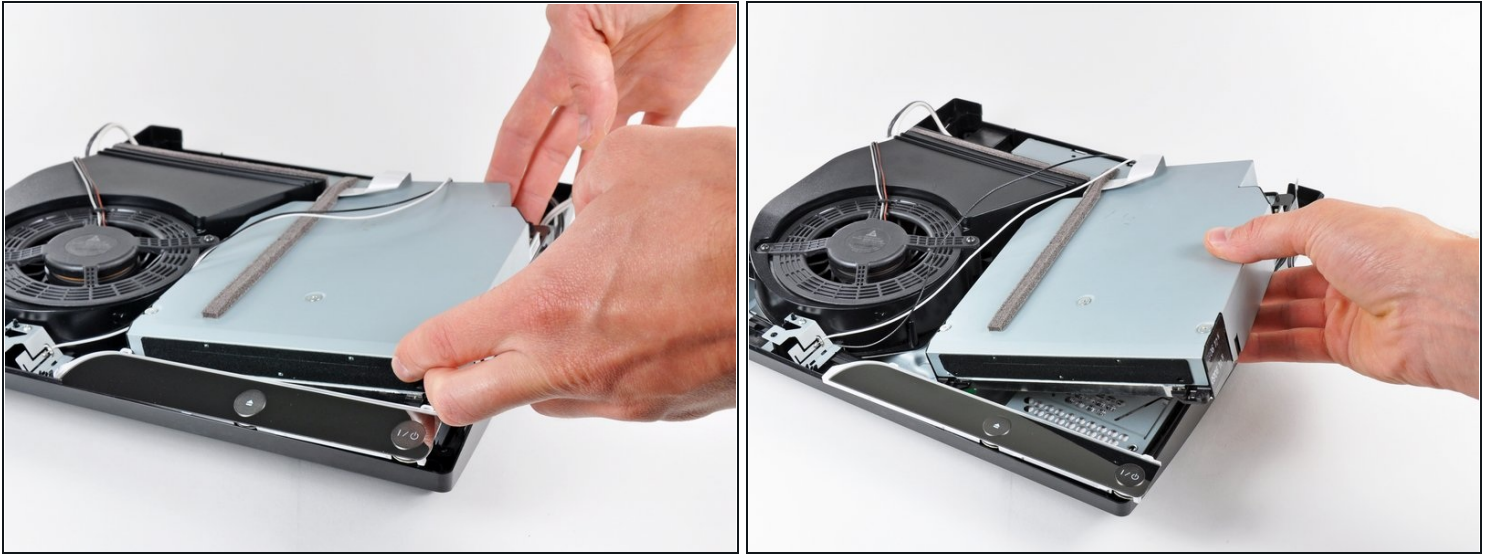
- Pull the Blu-ray power cable straight up to lift its connector out of the socket on the Blu-ray drive.

Step 15



- Remove the single 9.5 mm Phillips screw securing the Blu-ray drive to the lower case.

Step 16

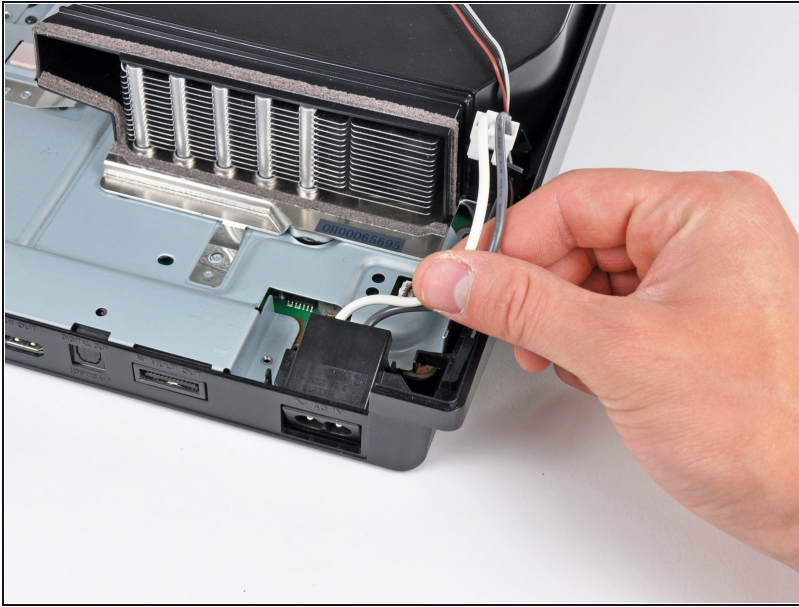


- Lift the Blu-ray drive slightly by its right edge to dislodge the control board from its housing.
- Remove the Blu-ray drive from the PS3.

⚠ After you reinstall the Blu-ray drive, be sure the control board is firmly seated in the lower case before proceeding.

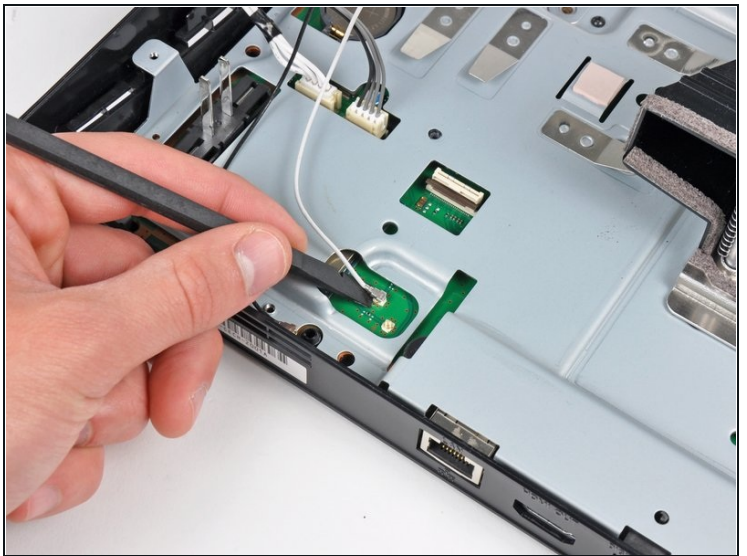
ⓘ If replacing the Blu-ray drive with a new drive, [swap the circuit board from your old drive into the new drive.](#)

Step 17 — Motherboard Assembly



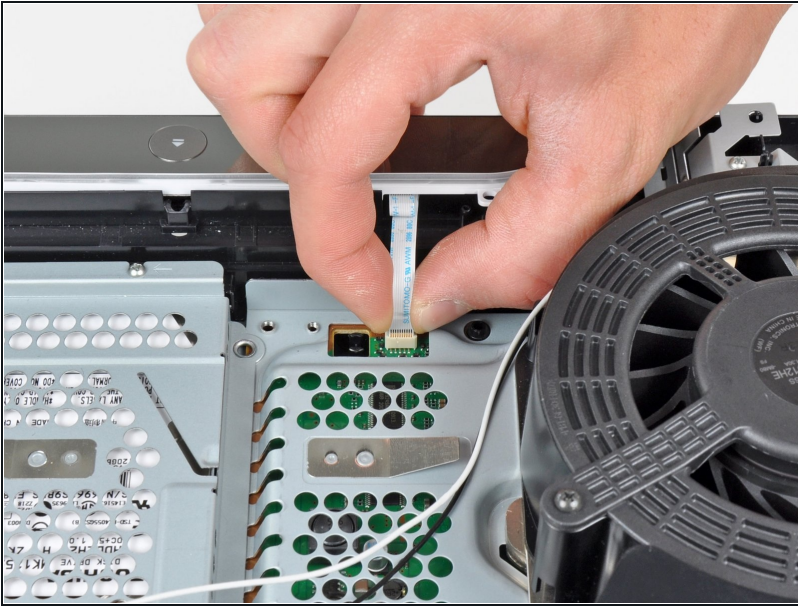
- Pull the AC-In cables upward to remove the AC inlet from the lower case.

Step 18



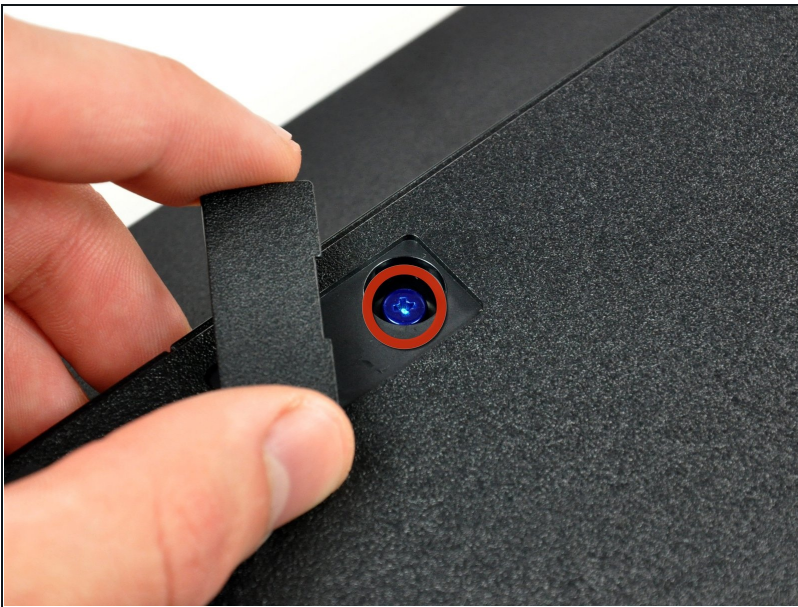
- Use the flat end of a spudger to pry both antenna connectors up from their sockets on the motherboard.

Step 19



- Pull the control board ribbon cable up and out of its socket on the motherboard.
- Remove the control board.

Step 20



- Turn the PS3 over and lay it on its backside.
- Use the flat edge of a metal spudger to pop up the small access door on the bottom cover near the front of the PS3.
- Remove the blue Phillips screw hidden under the access door.

Step 21



- Slide the hard drive bay cover toward the right side of the lower case, then pull it away from the front edge to remove it from the PS3.

Step 22



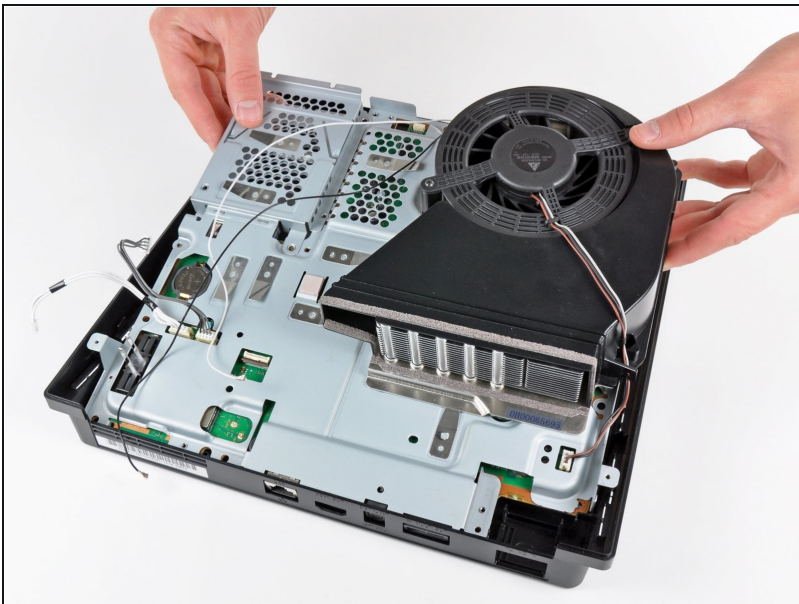
- Using its attached metal handle, pull the hard drive out of its bay.

Step 23



- Remove the following five screws securing the motherboard assembly to the lower case:
 - Two silver 6 mm Phillips
 - Three black 8 mm Phillips

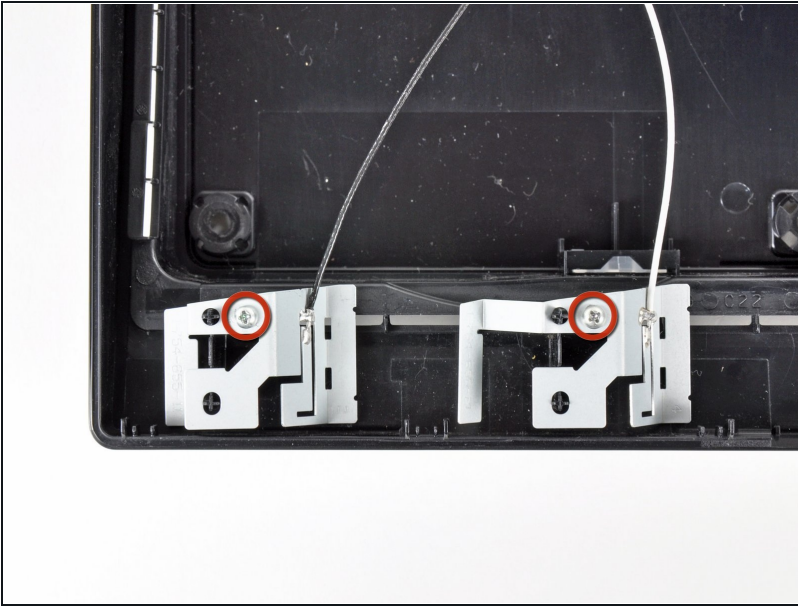
Step 24



- Lift the motherboard assembly from its front edge and remove it from the lower case, minding the antenna cable still attached to the lower case.

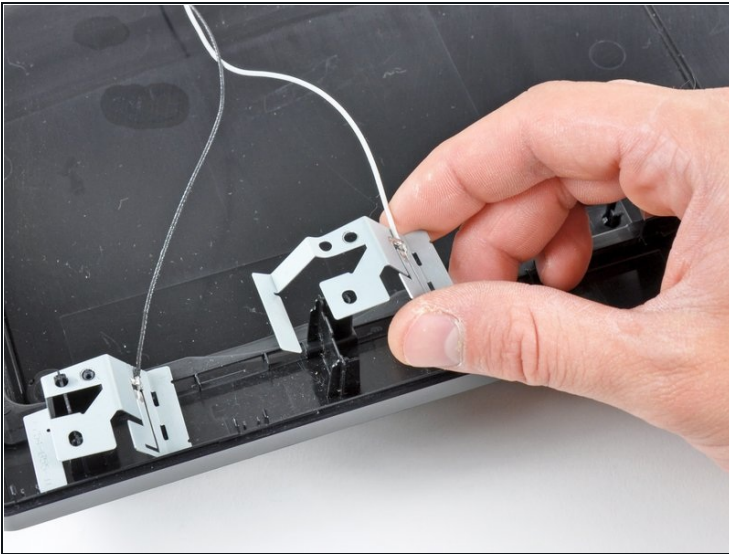
⚠ Be careful not to bend the metal antenna bodies as you lift the motherboard assembly.

Step 25 — Lower Case



- Remove the two 6.2 mm Phillips screws securing the antennas to the lower case.

Step 26



- Lift the antennas out of their plastic alignment posts and remove them from the lower case.
- The lower case is all that remains.

To reassemble your device, follow these instructions in reverse order.

