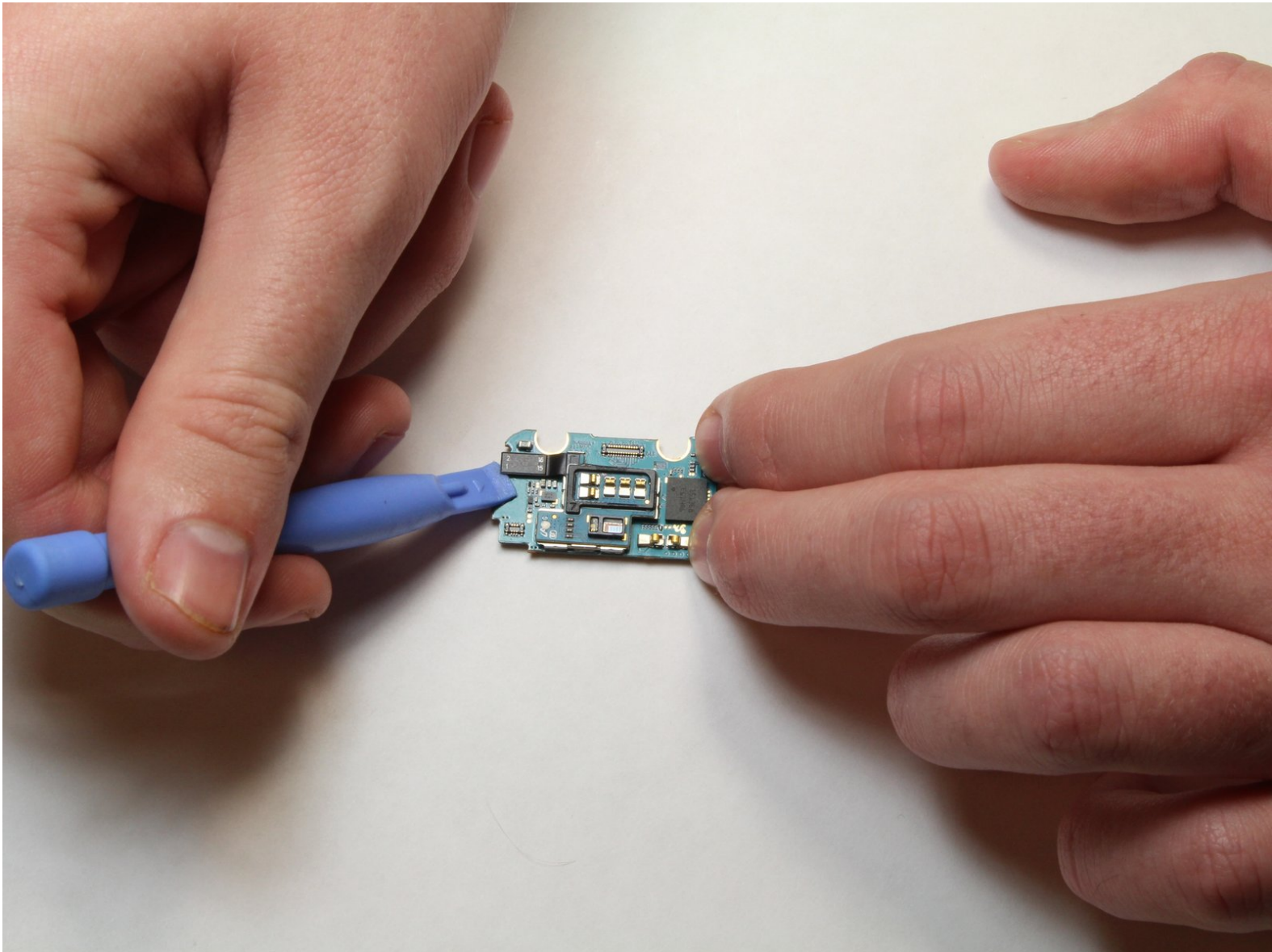




# Samsung Gear Live Heart Rate Monitor Replacement

This guide will show you how to replace the heart rate monitor on the Samsung Gear Live.

Written By: Keith Cooper



---

## INTRODUCTION

The heart rate monitor is a component that allows your watch to read your heart rate. It does this by emitting infrared light to monitor blood flow under your skin. If your watch does not detect your heart rate and you've tried the options in the Troubleshooting guide, then the heart rate monitor may need to be replaced.



### TOOLS:

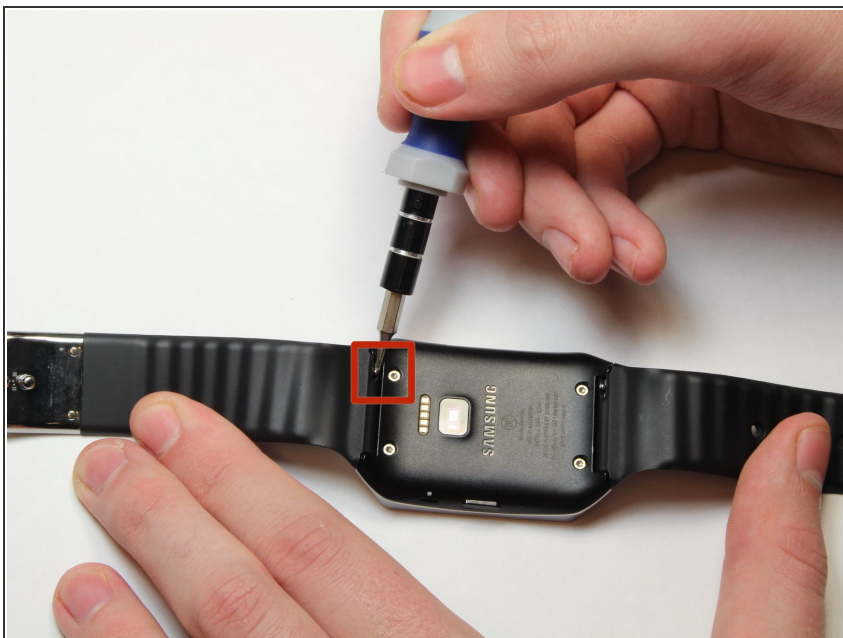
- [Flathead 3/32" or 2.5 mm Screwdriver](#) (1)
  - [iFixit Opening Tools](#) (1)
  - [T5 Torx Screwdriver](#) (1)
-

## Step 1 — Lay the watch face-down



- Lay the watch face-down on a flat, stable surface.

## Step 2 — Remove the holding pin



- Press the watchband down against the work surface.
- Press the tip of a flathead screwdriver against the edge of the spring-loaded holding pin.

### Step 3 — Remove the watchband



- With the spring-loaded pin pressed in, the watch band should release easily.
- Gently pull the band away from the body of the watch.
- Repeat steps 2 and 3 for the opposite side.

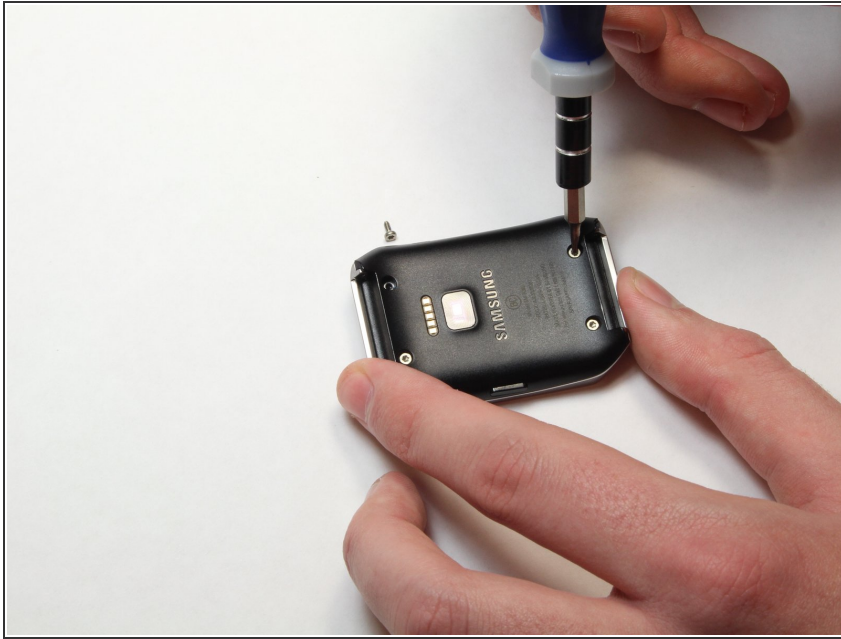
### Step 4 — Locate the four screws



- With the watch laying face-down, locate the four screws. They are located on the back of the watch, at the four corners.



## Step 5 — Remove the 4 screws



- Using a Torx-T5 screwdriver, remove each of the four 4mm screws and set them aside.

## Step 6 — Pry off the back of the watch.



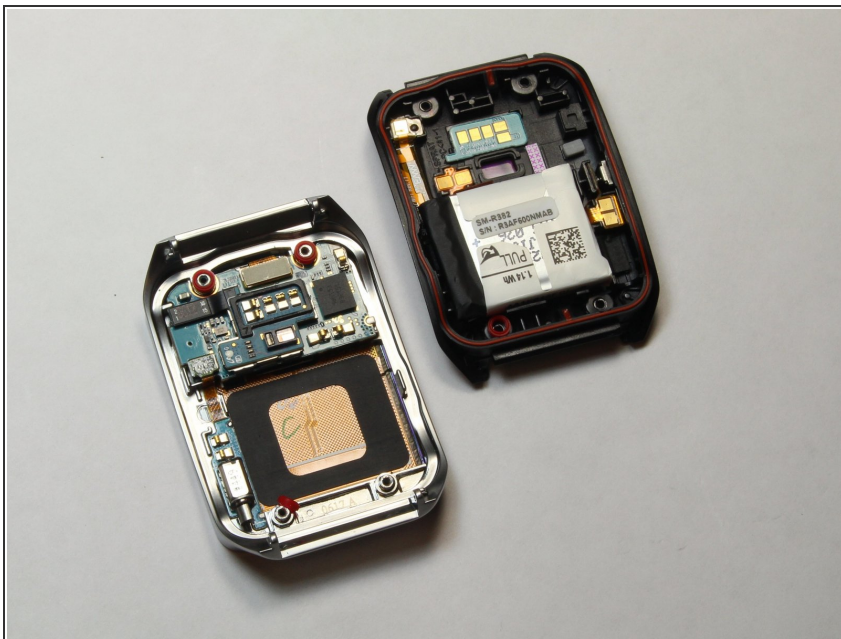
- Gently work the plastic opening tool under the top edge of the watch's back cover.

## Step 7 — Lift off the back cover



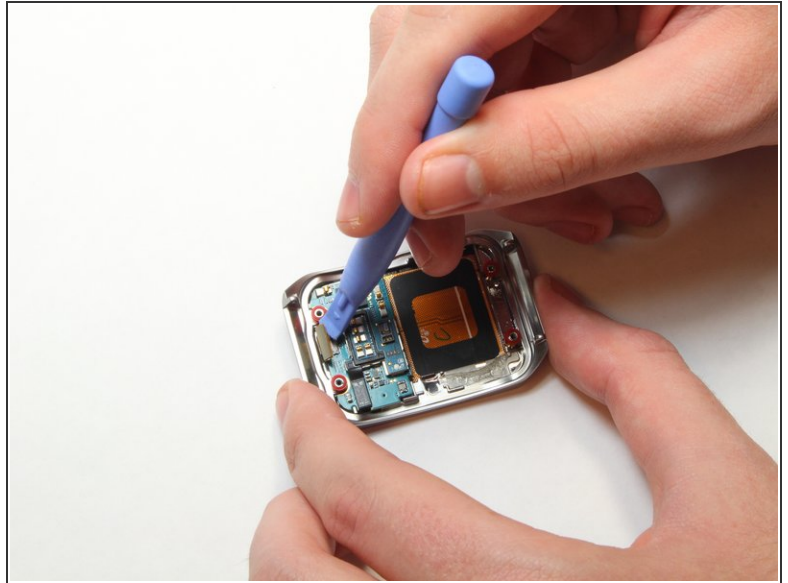
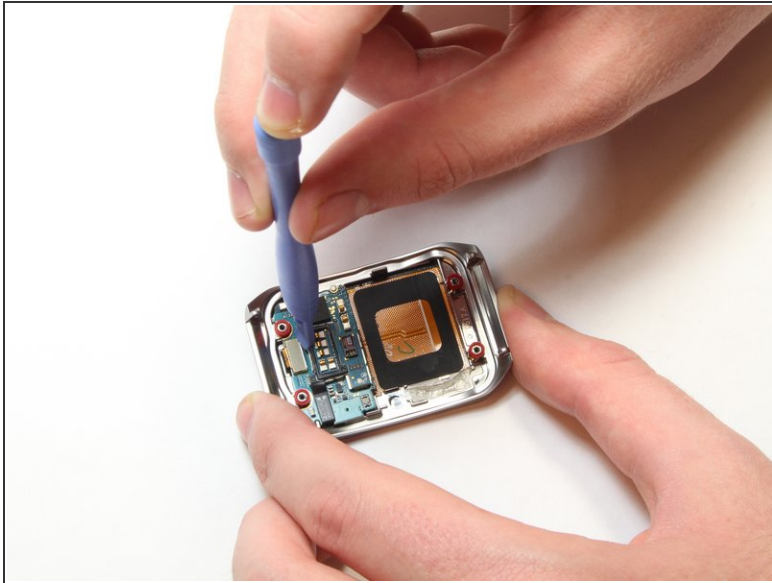
- With the watch's back cover pried loose, gently lift it away from the front half of the watch.

## Step 8 — Set both halves of the watch aside



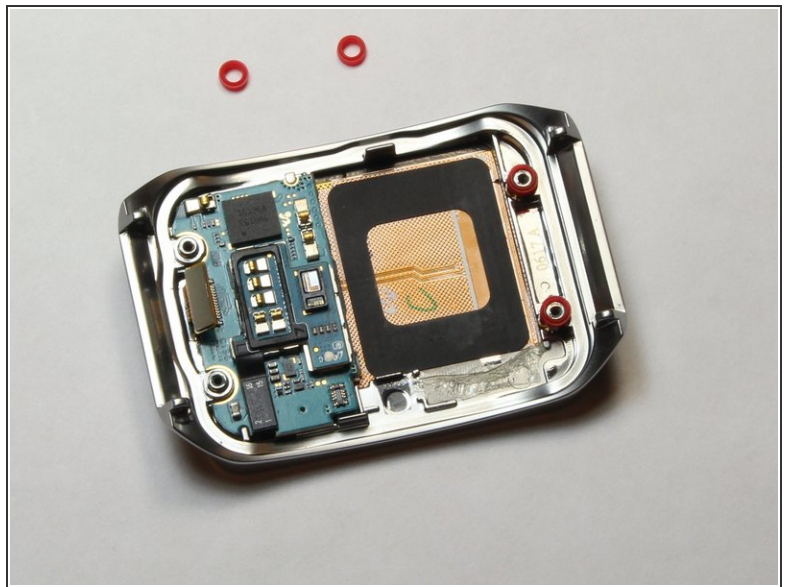
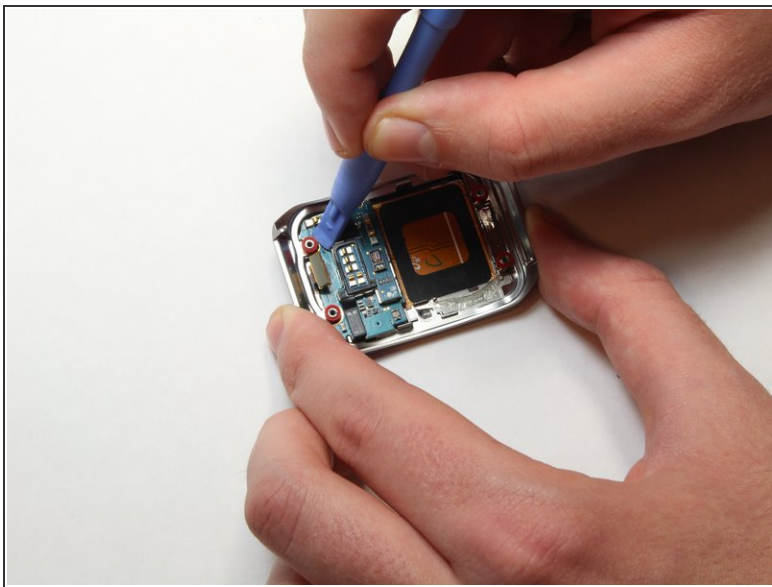
- Lay both halves of the watch body assembly face down (with internal components facing up).

## Step 9 — Pry away the ribbon cable



- Locate the ribbon cable connector near the edge of the watch's case.
- Using the plastic opening tool, gently pry the connector from the motherboard

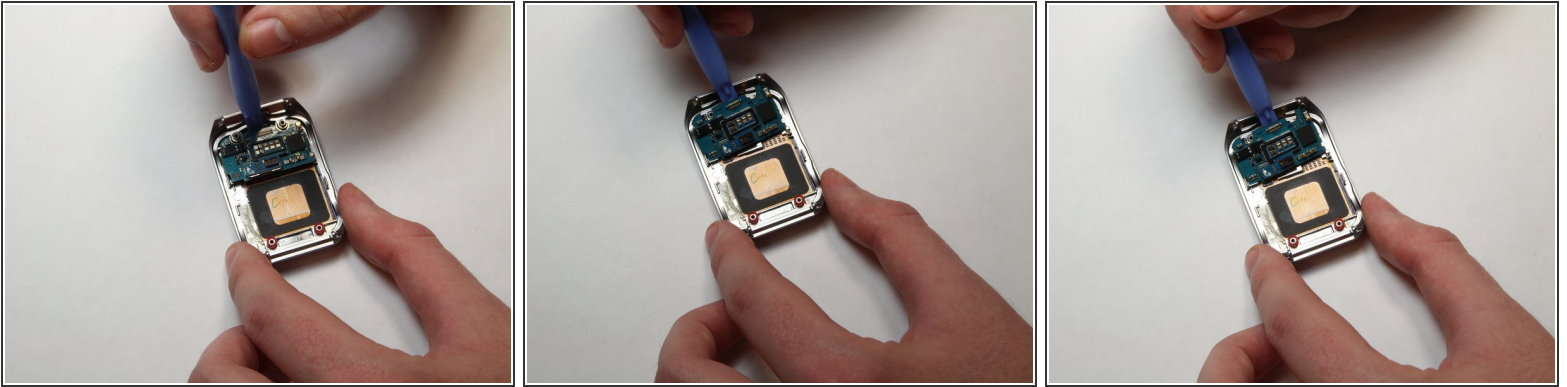
## Step 10 — Remove the red spacers



- Using the plastic opening tool, gently pry away the red spacers.
- Set the spacers aside.

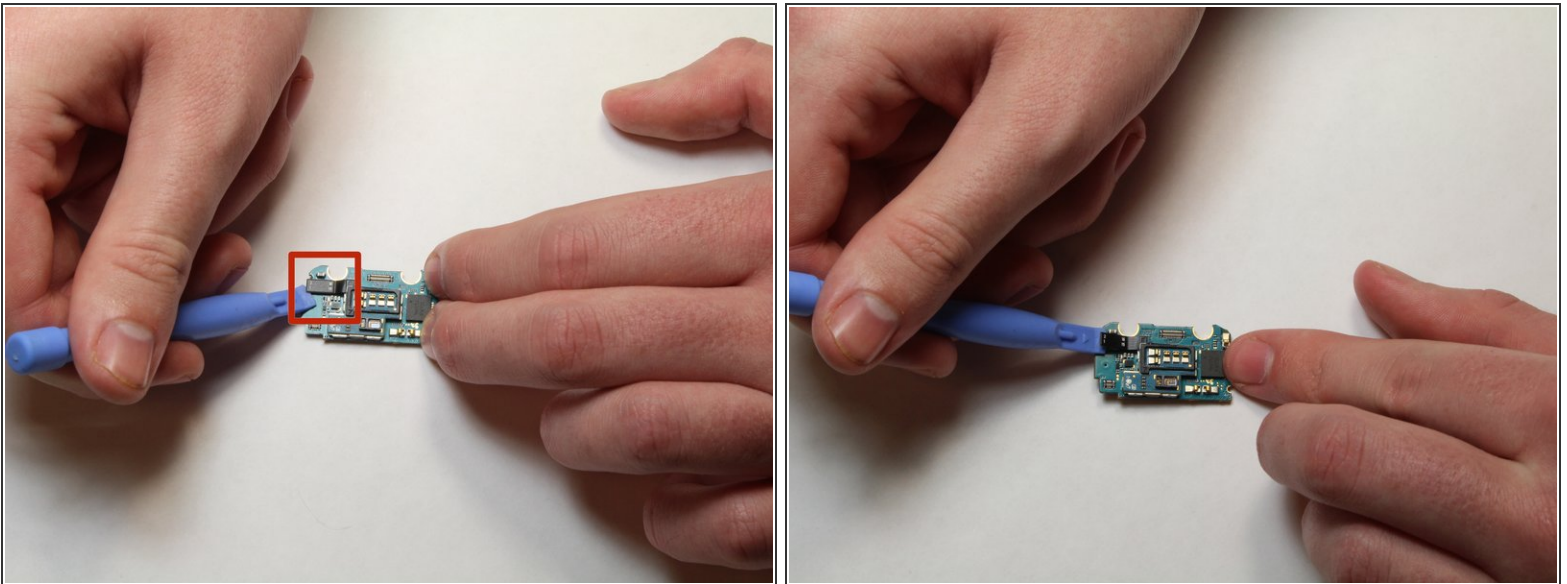


## Step 11 — Pry up the motherboard



- Insert the end of the plastic opening tool under the motherboard.
- Gently pry up the motherboard.

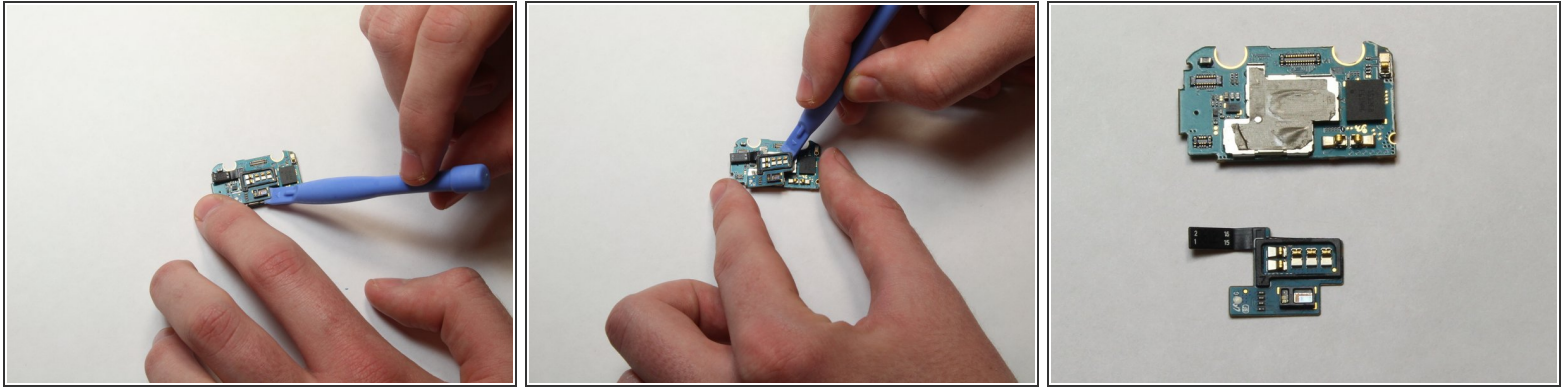
## Step 12 — Remove the heart rate sensor cable



- Set the motherboard on a flat, stable surface.
- Using the plastic opening tool, gently pry the heart rate sensor cable from the motherboard.



## Step 13 — Pry up the heart rate sensor



- Once the cable is disconnected, run the plastic opening tool under the heart rate sensor from all sides, gently prying up as you go along.

To reassemble your device, follow these instructions in reverse order.