



# Samsung Gear Live Back Replacement

This guide will show you how to remove the back of the Samsung Gear Live.

Written By: Keith Cooper



---

## INTRODUCTION

This guide is used only as a precursor to the battery, vibrator motor, and heart rate monitor removal and replacement.

---



### TOOLS:

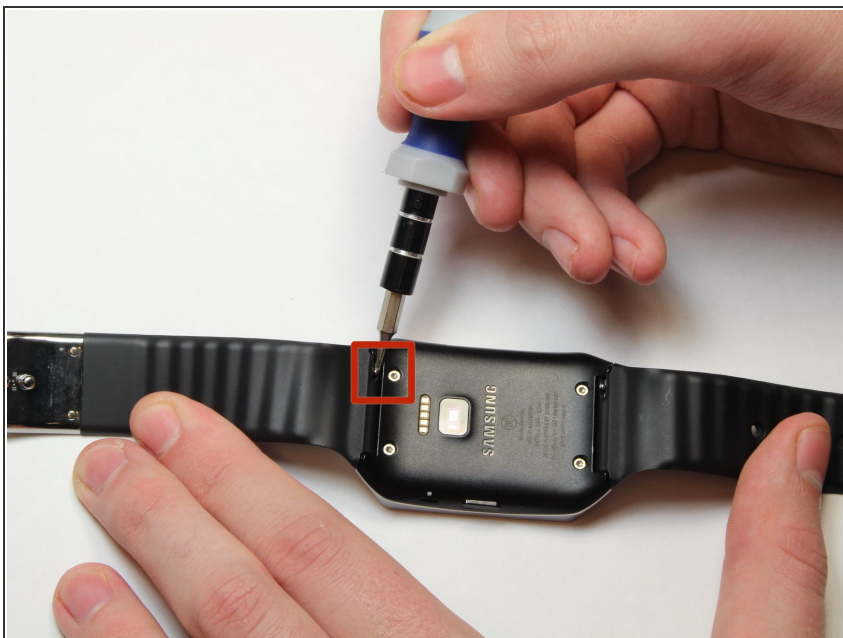
- [iFixit Opening Tools](#) (1)
  - [Flathead 3/32" or 2.5 mm Screwdriver](#) (1)
  - [T5 Torx Screwdriver](#) (1)
-

## Step 1 — Lay the watch face-down



- Lay the watch face-down on a flat, stable surface.

## Step 2 — Remove the holding pin



- Press the watchband down against the work surface.
- Press the tip of a flathead screwdriver against the edge of the spring-loaded holding pin.

### Step 3 — Remove the watchband



- With the spring-loaded pin pressed in, the watch band should release easily.
- Gently pull the band away from the body of the watch.
- Repeat steps 2 and 3 for the opposite side.

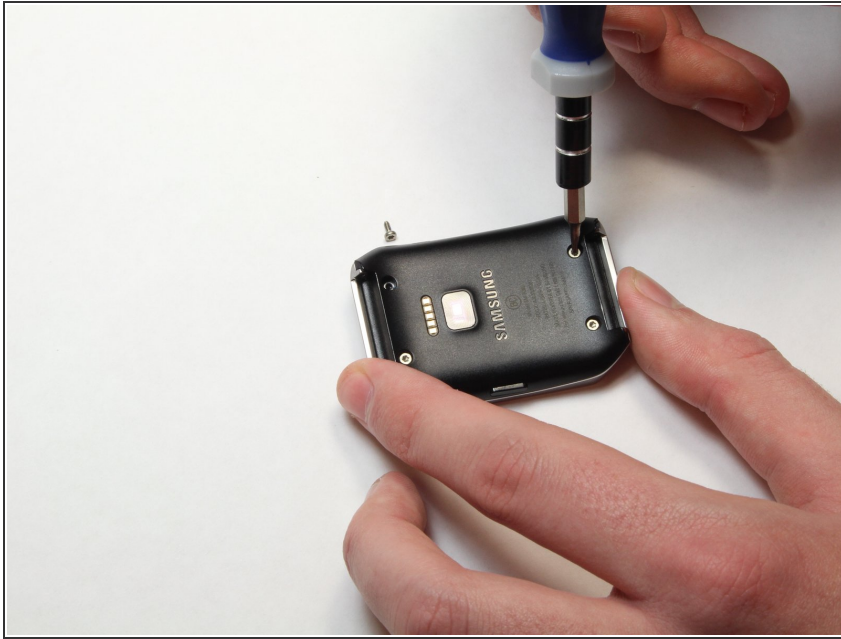
### Step 4 — Locate the four screws



- With the watch laying face-down, locate the four screws. They are located on the back of the watch, at the four corners.



## Step 5 — Remove the 4 screws



- Using a Torx-T5 screwdriver, remove each of the four 4mm screws and set them aside.

## Step 6 — Pry off the back of the watch.



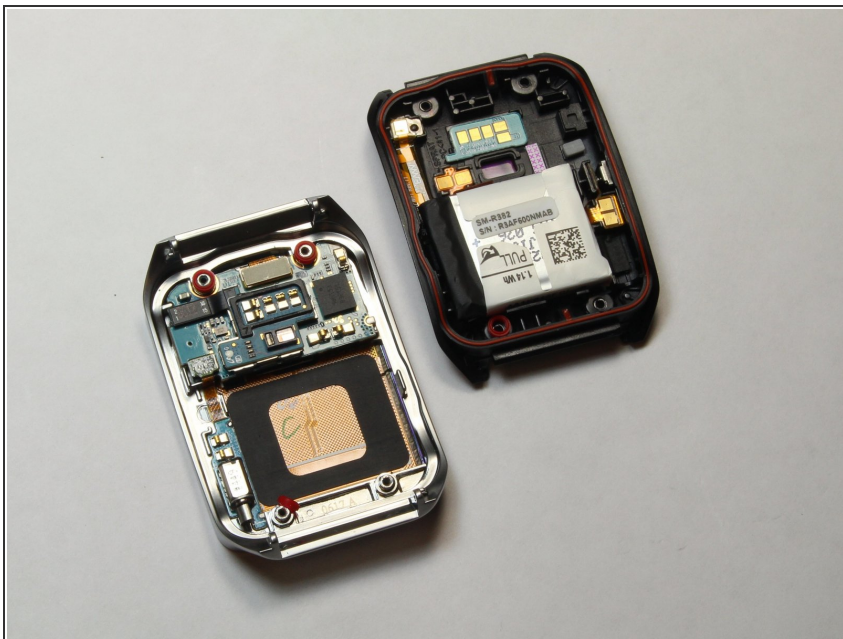
- Gently work the plastic opening tool under the top edge of the watch's back cover.

## Step 7 — Lift off the back cover



- With the watch's back cover pried loose, gently lift it away from the front half of the watch.

## Step 8 — Set both halves of the watch aside



- Lay both halves of the watch body assembly face down (with internal components facing up).

To reassemble your device, follow these instructions in reverse order.