



# Sony Ericsson Xperia Pro MK16A Power Button Replacement

This guide will show you how to replace the power button in your Sony Ericsson Xperia Pro

Written By: John Emery



---

# INTRODUCTION

Follow this guide to install a new power button in about 5 minutes.




## TOOLS:

- [iFixit Opening Tools](#) (1)
  - [Phillips #0 Screwdriver](#) (1)
  - [T6 Torx Screwdriver](#) (1)
-

## Step 1 — Taking the Back Off



- Use a plastic opening tool to get the back cover off your phone.

 The plastic opener will work on any side, but be careful and pry gently.

## Step 2 — Removing the Battery



- Locate the battery in your phone.
- Find the divot below the battery.
- Use your thumb to lift the battery out of the phone.

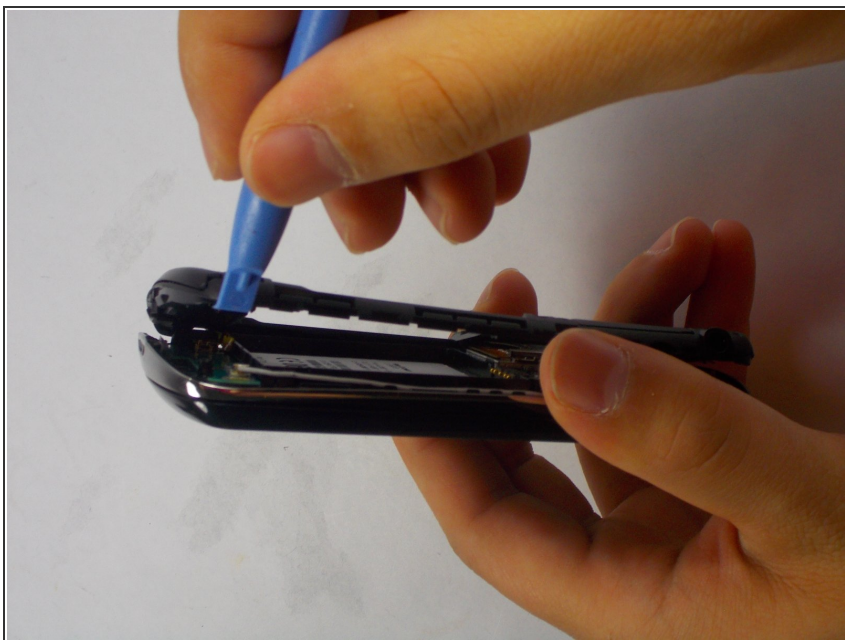


### Step 3 — Remove Screws



- Remove the 4 black screws with the Phillips screwdriver.
- Remove the 4 silver screws with the Torx screwdriver.

### Step 4 — Remove Back Case



- Insert the plastic opening tool in between the two halves of the case. Pry around the phone to detach the back case.

## Step 5 — Replacing the Power Button



- When the inner back cover is off, locate and remove the power button.

To reassemble your device, follow these instructions in reverse order.