



PlayStation 3 Slim AC Inlet Replacement

Replace a broken AC inlet.

Written By: Andrew Bookholt



INTRODUCTION

Use this guide to replace the AC socket and its cables connected to the power supply.



TOOLS:

- [Metal Spudger](#) (1)
- [Phillips #1 Screwdriver](#) (1)
- [T8 Torx Security Bit Screwdriver](#) (1)



PARTS:

- [Sony PlayStation 3 Slim AC Inlet](#) (1)

Step 1 — Top Cover



- Turn the PS3 over and lay it on its backside.
 - Carefully peel the warranty sticker up off the lower case to reveal a hidden screw cover.
- ★ To avoid activating the **VOID** that may come up, heat the sticker carefully to remove and replace it cleanly.

Step 2



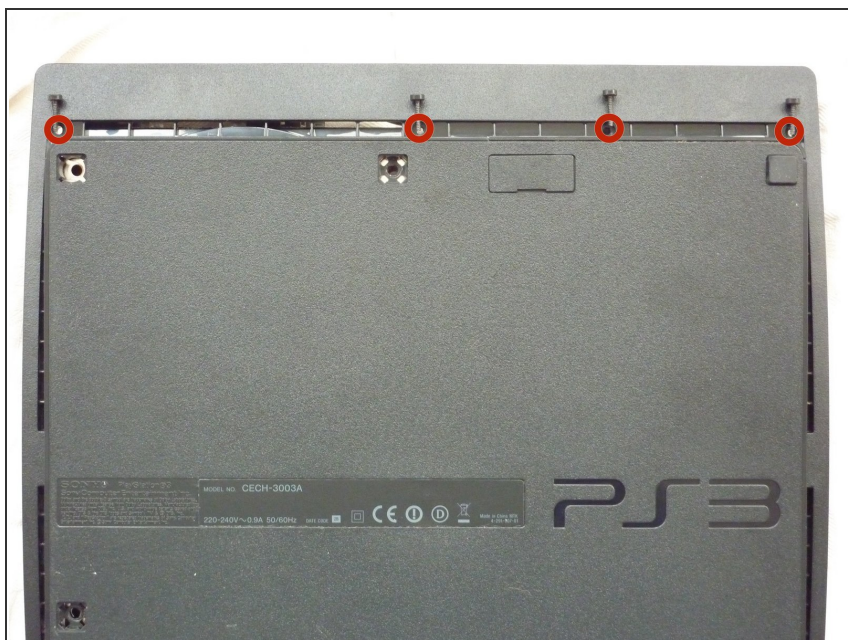
- Use the flat end of a metal spudger to pry up the seven screw covers around the edge of the lower case.

Step 3



- Remove the seven 37 mm Phillips screws securing the top cover to the lower case.

Step 4



- Remove the four 13.3 mm T8 security Torx screws beneath the Blu-ray drive opening. (Some models may only have three screws)

Step 5



- Lift the top cover from its rear edge and rotate it toward the front of the PS3.
- Lift the top cover off the PS3.

Step 6 — Power Supply



- Squeeze the AC inlet connector's locking mechanism and pull straight up to disconnect it from the power supply.

Step 7



- Pull the DC-Out cables straight up to lift their connector up and out of its socket on the power supply.

Step 8



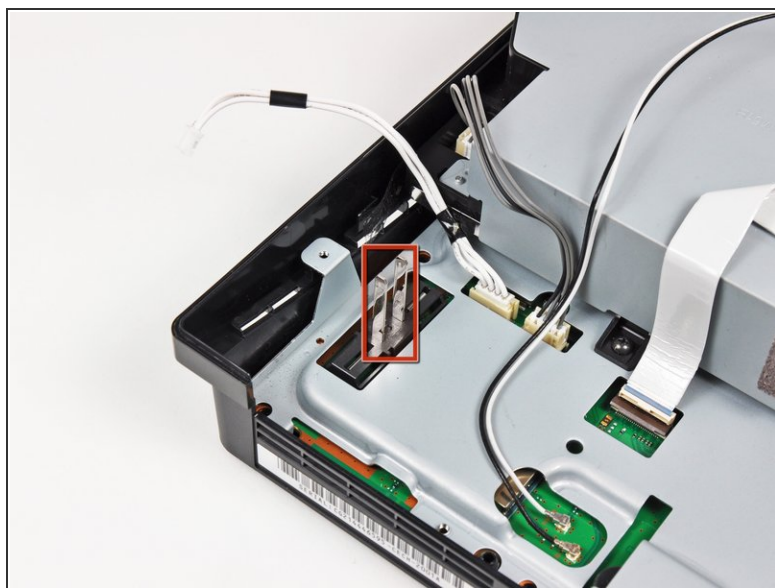
- Remove the two 7.6 mm Phillips screws securing the power supply to the lower case.

Step 9



- Lift the power supply upward from its left edge as viewed from the front of the PS3.

Step 10



- Continue to lift the left edge of the power supply until it lifts off the two metal posts shown in the second picture.
- Remove the power supply from the PS3, minding any cables that may get caught.

Step 11 — AC Inlet



- Lift the AC inlet cables straight upward to remove the AC inlet from the lower case.

To reassemble your device, follow these instructions in reverse order.