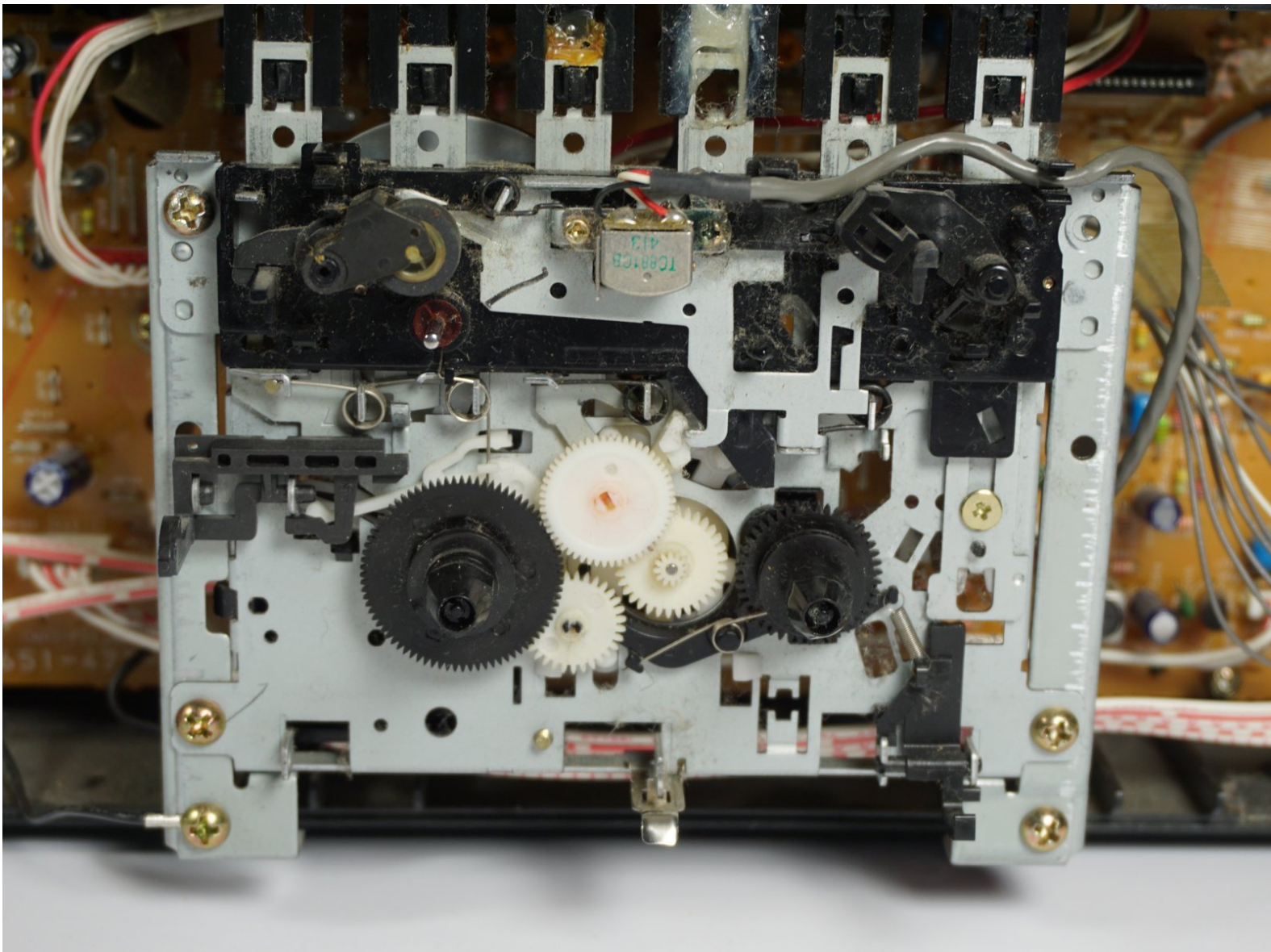




# Sony CFD-8 Motor Belt Replacement

Use this guide to replace the motor belt for the cassette player.

Written By: Wil Gilbreath






## TOOLS:

- [Flashlight](#) (1)
  - [Phillips #1 Screwdriver](#) (1)
-

## Step 1 — Battery



- Remove the battery cover on the back of the boombox by applying downward pressure to the two clamps.

 Be sure to unplug the boombox from the wall before attempting to open it for repair.

## Step 2



- Push against the positive end of each battery. Once it is loose, lift the battery out. Repeat for all six batteries.
- ☒ The top row of batteries have the positive side pointing right. The bottom row of batteries have the positive side pointing left.



### Step 3 — Front Panel



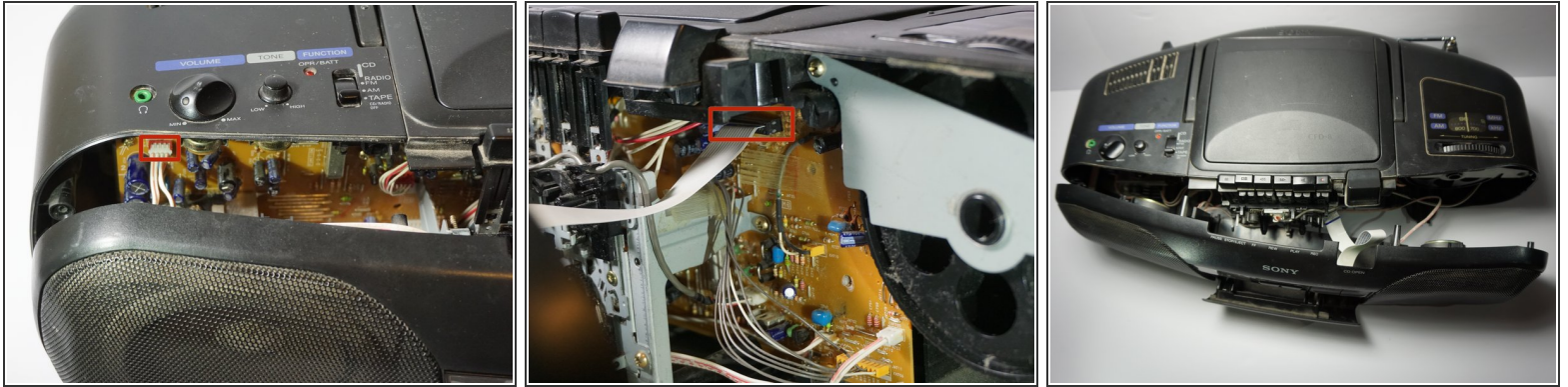
- Hold the boombox handle at an angle to access the screws behind the CD player.
- Use a Phillips #1 screwdriver to unscrew the top two 14 mm screws. You may need a flashlight to see the screws.

### Step 4



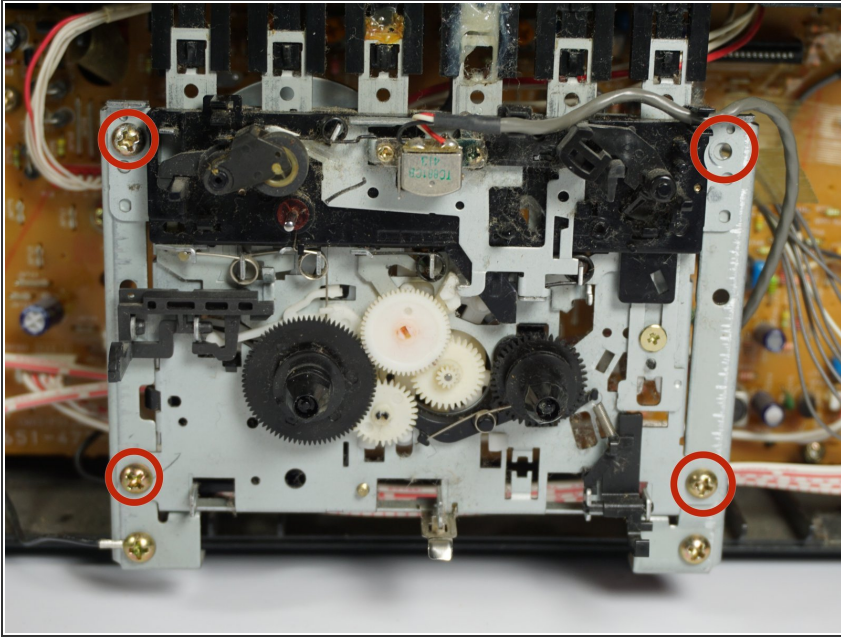
- Remove four 14 mm screws using a Phillips #1 screwdriver. Two of these screws are at the bottom of the boombox and the other two are on either side of the boombox as highlighted in the related images.
- All four screws have black arrows (not visible in the photo) indicating their location on the boombox.

## Step 5



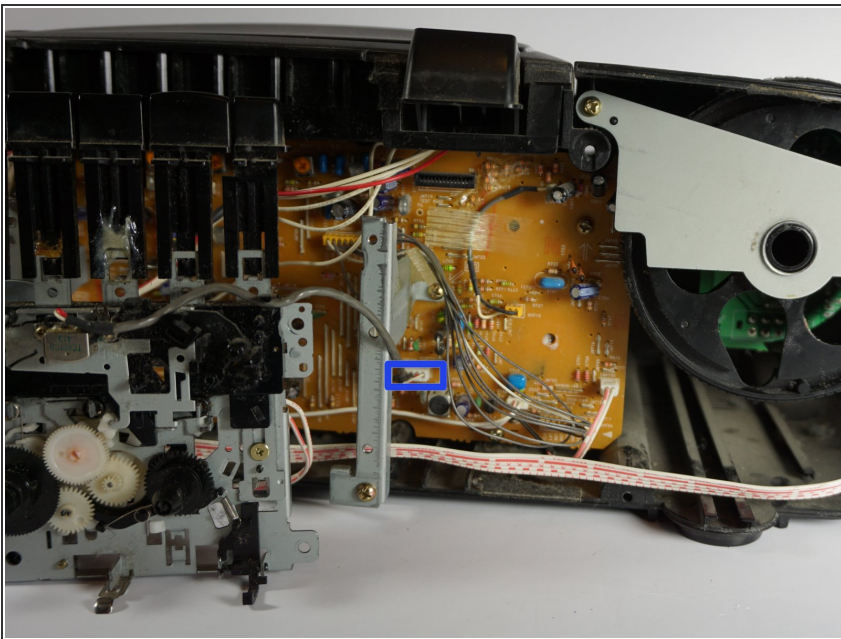
- Gently separate the front panel from the back panel.
- Remove the two connections holding the front panel to boombox.
  - One connection is located on the upper left hand side of the main circuit board.
  - The other is a large white strip slightly to the right of the cassette player.
- ⚠ Do not touch the cylindrical parts on the circuit board. These are capacitors and may deliver a shock!
- Remove the front panel.

## Step 6 — Remove Gear Assembly



- Unscrew the 3x12 screws circled in the photo using a #1 Phillips screwdriver.

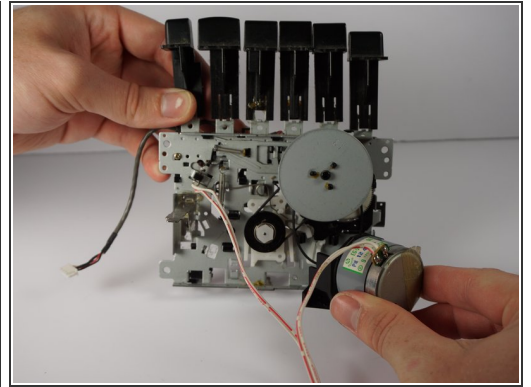
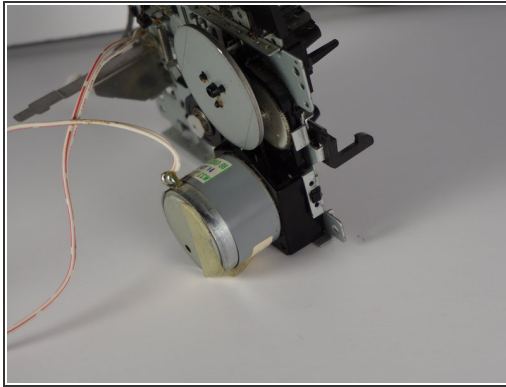
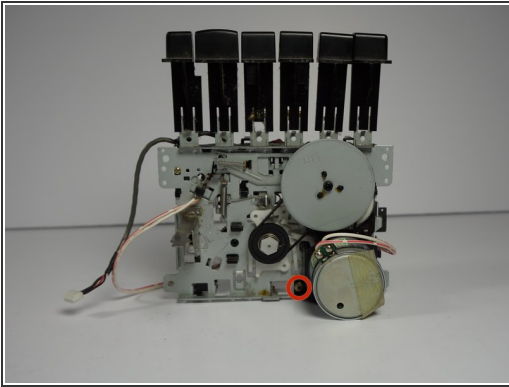
## Step 7 — Disconnect Wires



- Carefully disconnect the wire connection by pulling at its base.

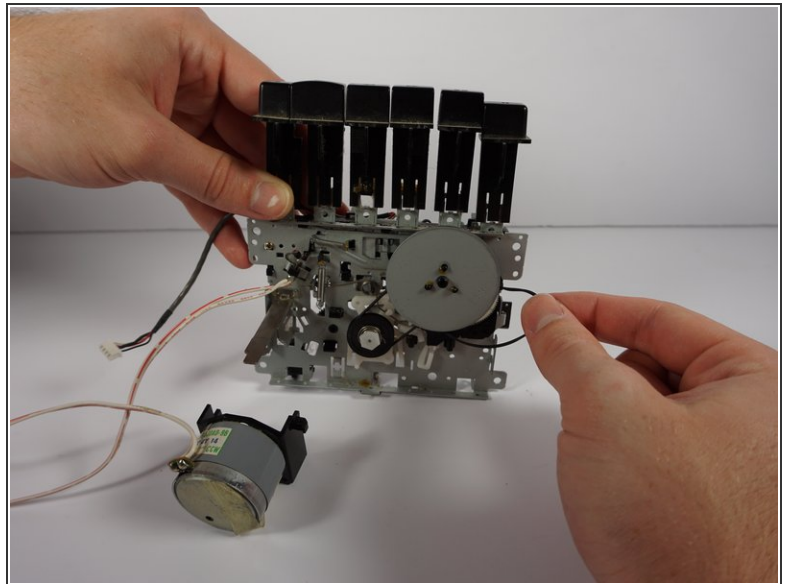
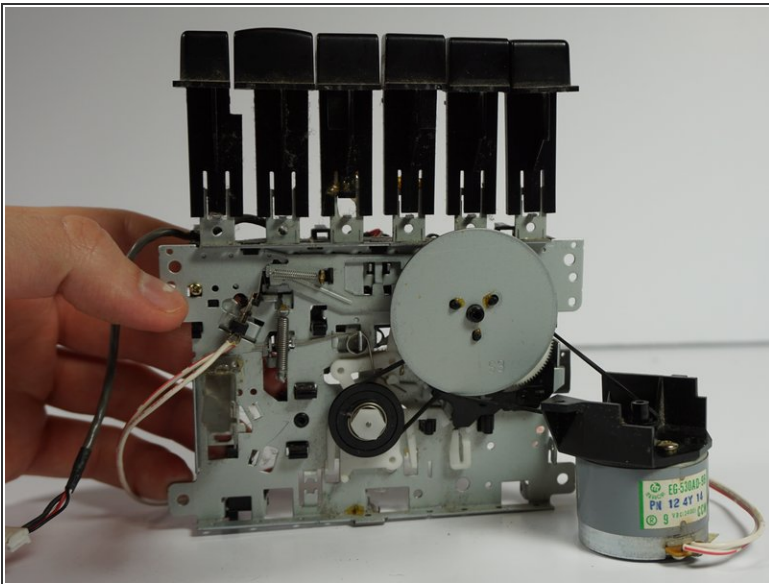


## Step 8 — Remove Motor



- Unscrew the 5mm screw shown in the photo.
- Note the small latch on the side of assembly as you remove the motor.

## Step 9 — Replace Motor Belt



- Remove the motor belt from its axle.

To reassemble your device, follow these instructions in reverse order.