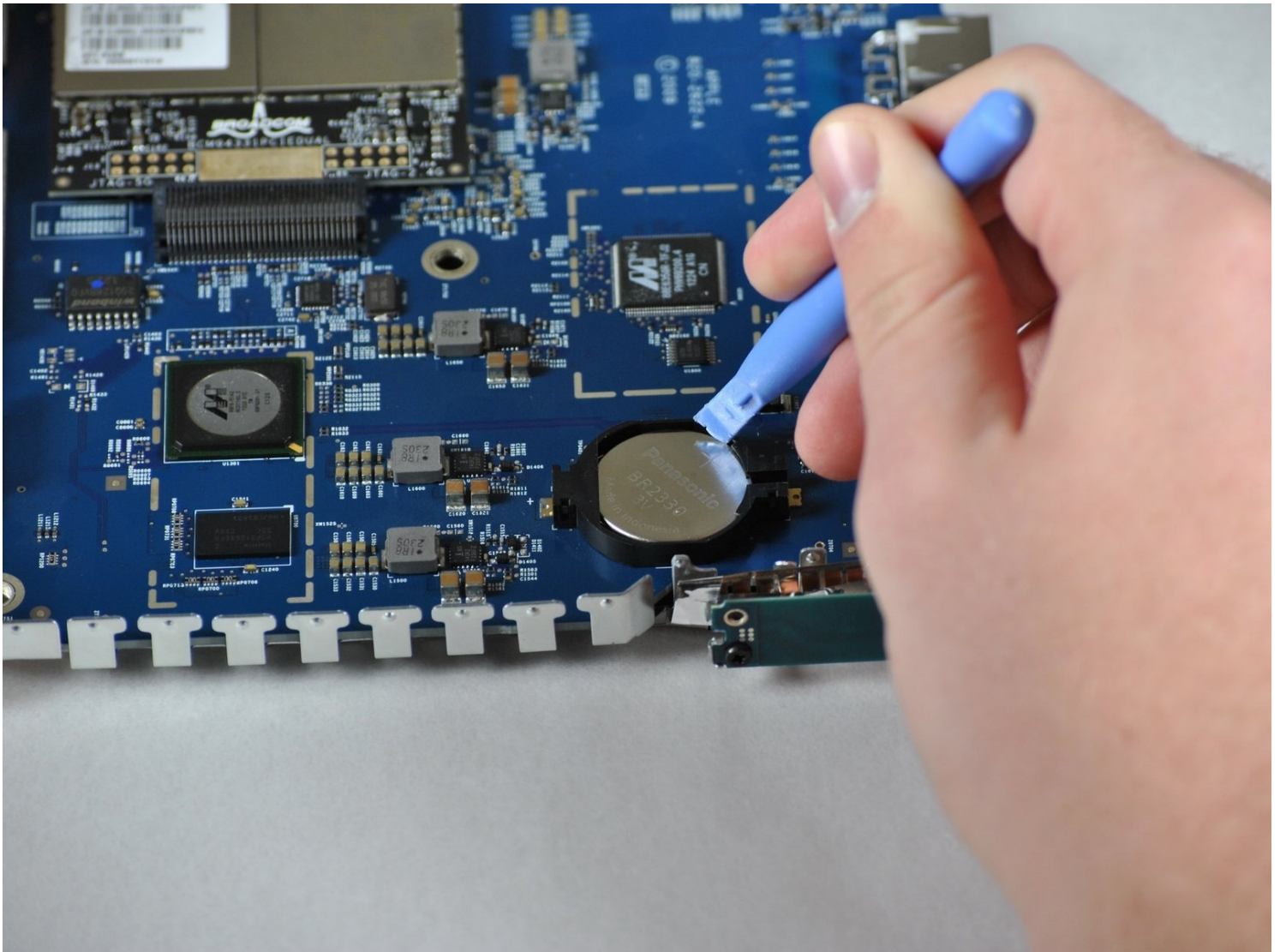




Apple Airport Extreme Model A1408 Battery Replacement

The battery is secured to the reverse side of...

Written By: Taiki Murakami



INTRODUCTION

The battery is secured to the reverse side of the logic board when opening the device from the bottom. The back pad and outer case must be removed before replacing the battery. Use a non-metallic tool to remove the battery.

TOOLS:


Heat Gun (1)
Phillips #00 Screwdriver (1)
iFixit Opening Tool (1)

PARTS:

BR2330 Lithium coin cell battery 3V (1)

Step 1 — Back Pad



 **CAUTION:** The heat gun and hair dryer can get very hot. Do not put your hands or any other body part too close to either device. Also, do not touch the back pad right after heating it.

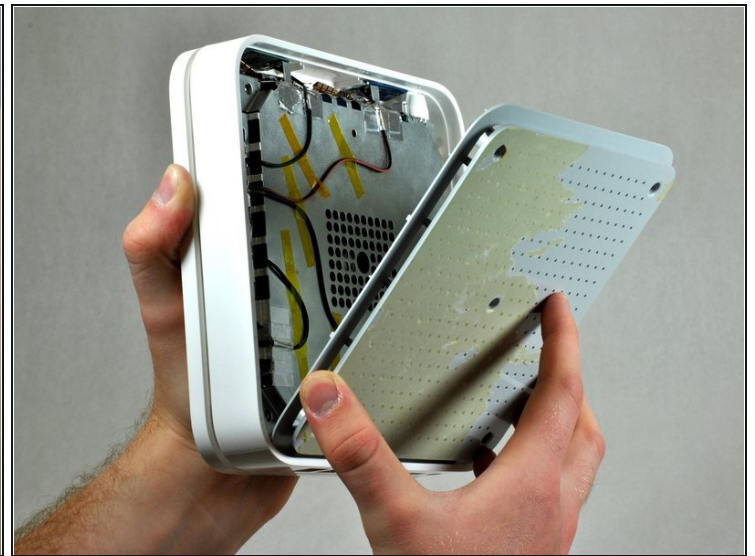
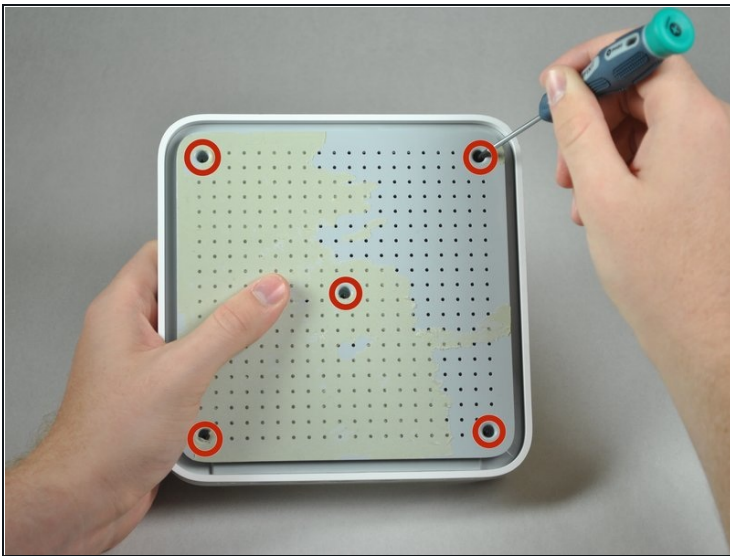
- Use a blow dryer or heat gun on a medium to high heat setting on the back pad to loosen the glue that attaches it to the device.

Step 2



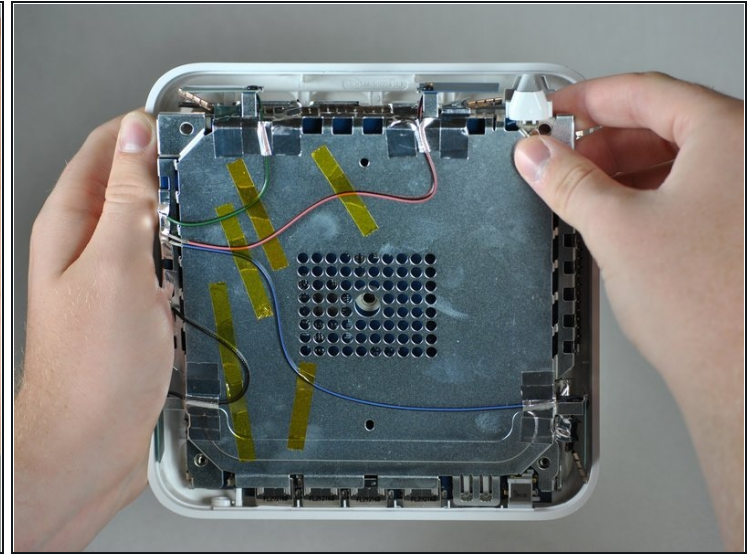
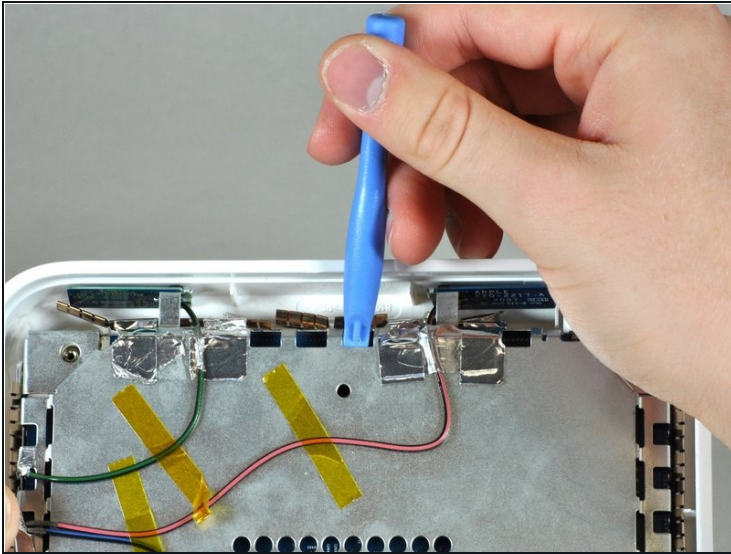
- To avoid ripping the back pad, gently peel it back from one corner until the pad is completely off.
- Use heat in areas where the glue is not loose enough.
- ☑ You may need to reattach the back pad with double-sided tape if the glue is not tacky enough to stick the pad back on.

Step 3 — Outer Case



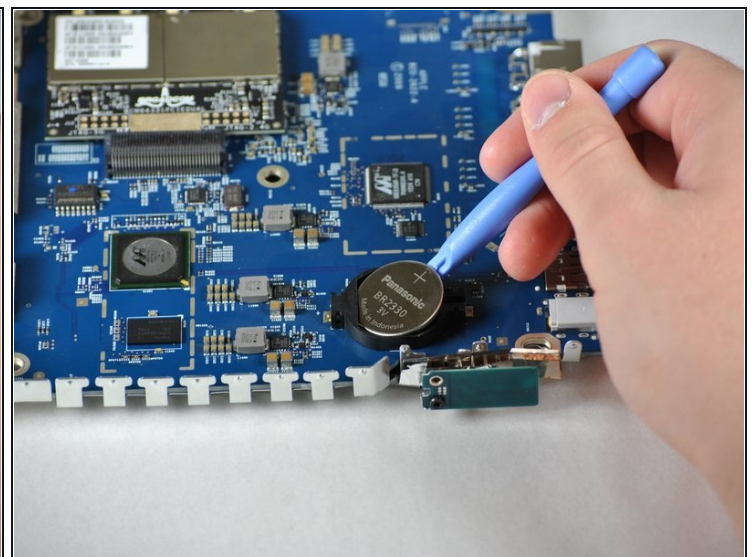
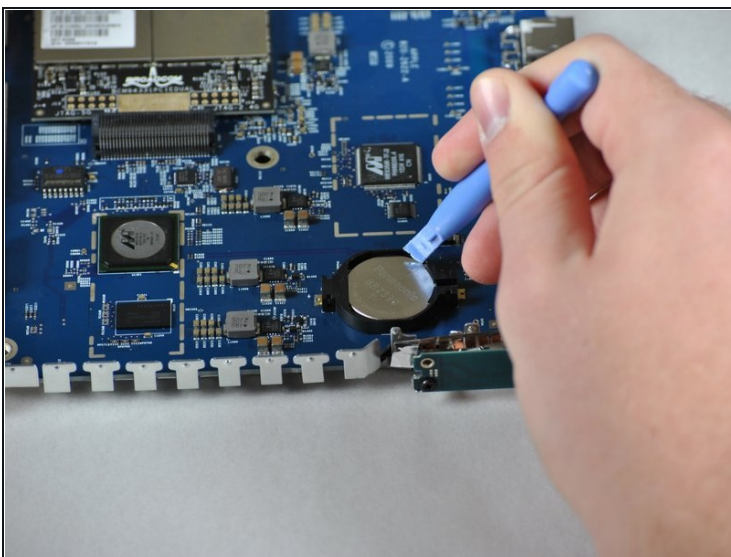
- After removing the back pad, unscrew the five 5 mm Phillips #00 screws in the large, deep holes in the plastic casing. The plastic casing should come off easily after removing all the screws.
- ☑ When installing the plastic back cover, ensure the lip is aligned with the ports on the back of the device.

Step 4



- Insert a narrow plastic opening tool into one of the notches. Apply moderate force to pull the metal casing from the plastic outer casing. You can use the rim of the outer case as leverage. You should hear a click when the metal casing detaches.
- After you hear the click, remove the inner metal case from the outer case using your hands. It should not take very much force.

Step 5 — Battery



- Wedge the tip of a plastic opening tool between the battery and the securing clip. Pop the battery out using sufficient leverage.

To reassemble your device, follow these instructions in reverse order.