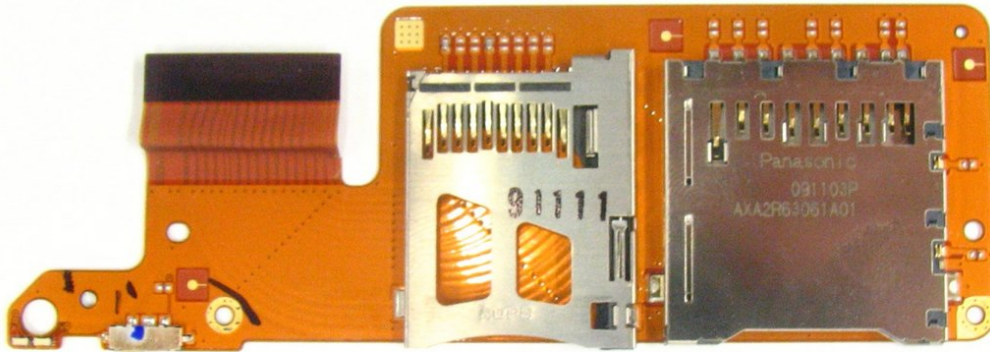




Sony Reader Touch Edition PRS-600 SD and Pro Duo Memory Card Holders Replacement

This guide shows the reader how to move and replace the holder for the SD and Pro Duo Memory Card.

Written By: Zachary Jeffers





TOOLS:

- [Phillips #000 Screwdriver](#) (1)
 - [Spudger](#) (1)
-

Step 1 — Back Panel



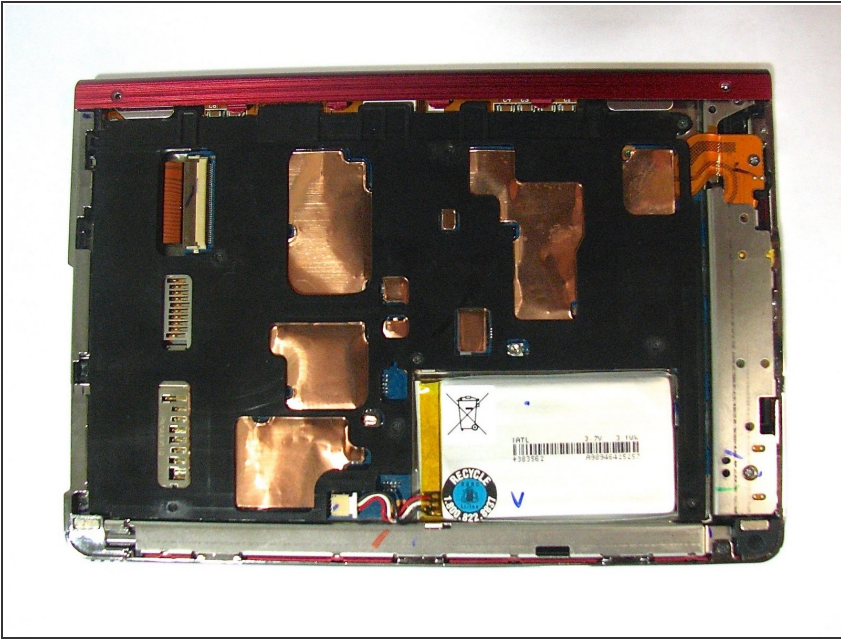
- Using the Phillips head screwdriver PH000, remove the two 1.4 mm screws that are located on the backside of the device.

Step 2



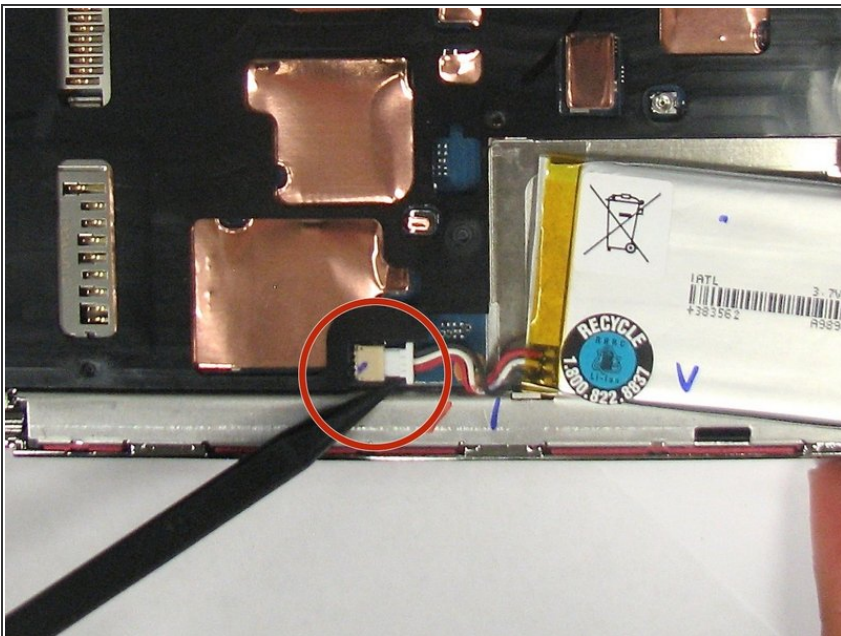
- Slide the back cover off by pushing it to the left, away from the side that held the screws.
- Remove the cover.

Step 3



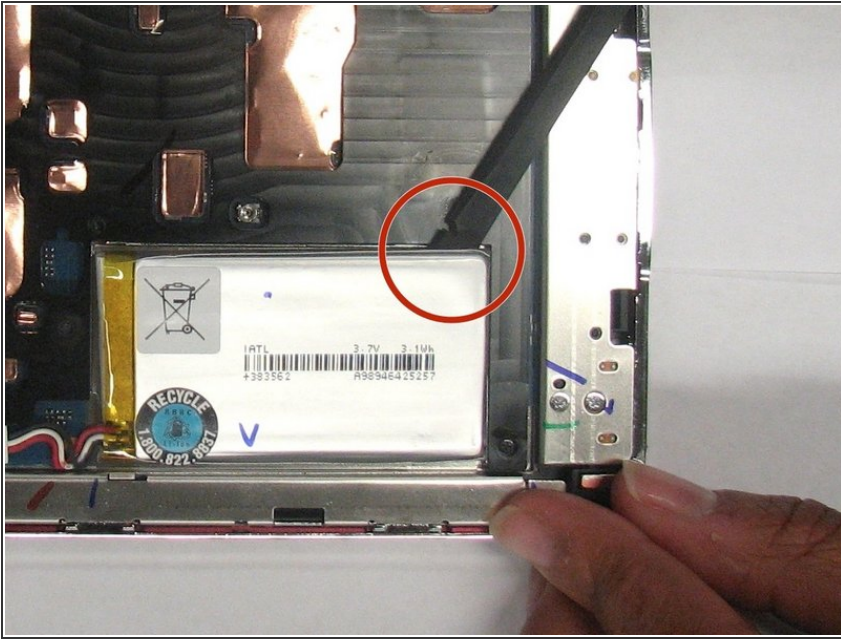
- This is what the device should look like once the back cover panel has been removed.

Step 4 — Battery



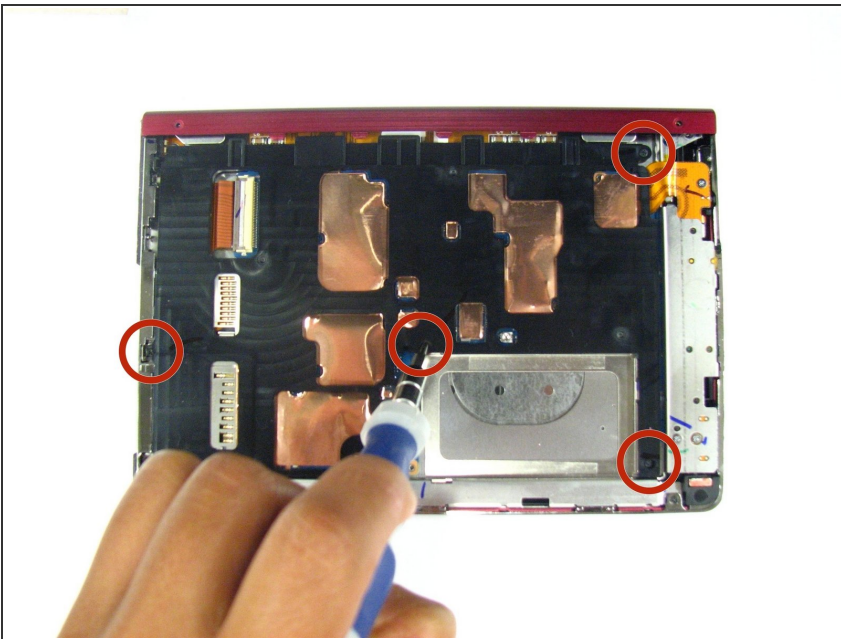
- Once the back cover has been removed locate the battery in the bottom right corner of the device.
- Using the pointed end of the spudger, push out the white plug that is connected to the battery from its beige base.

Step 5



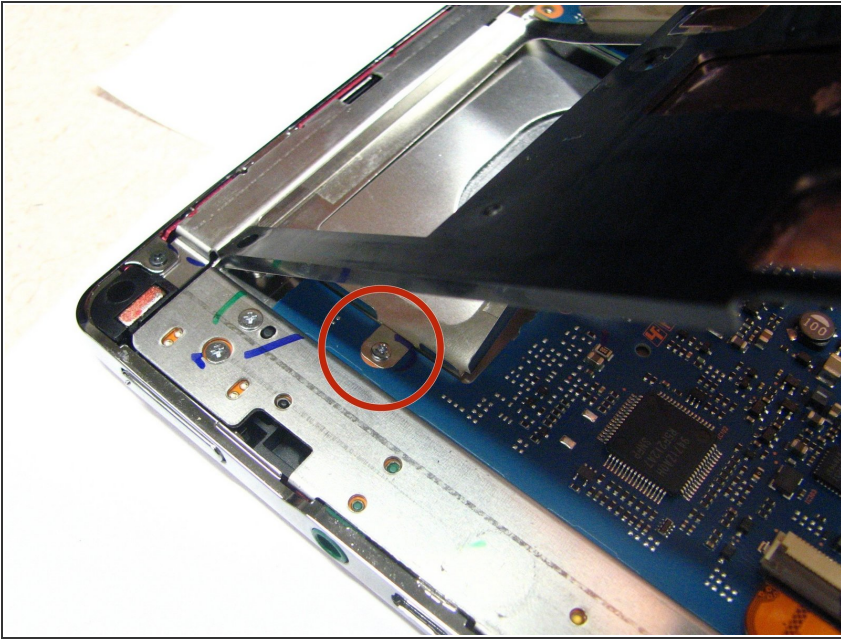
- Use the flat end of the spudger to pry the battery out of its holder. There may be glue holding it in place.

Step 6 — Inner Casing



- Using a screwdriver remove the four 1.4 mm screws that are holding the black plastic casing in place.

Step 7



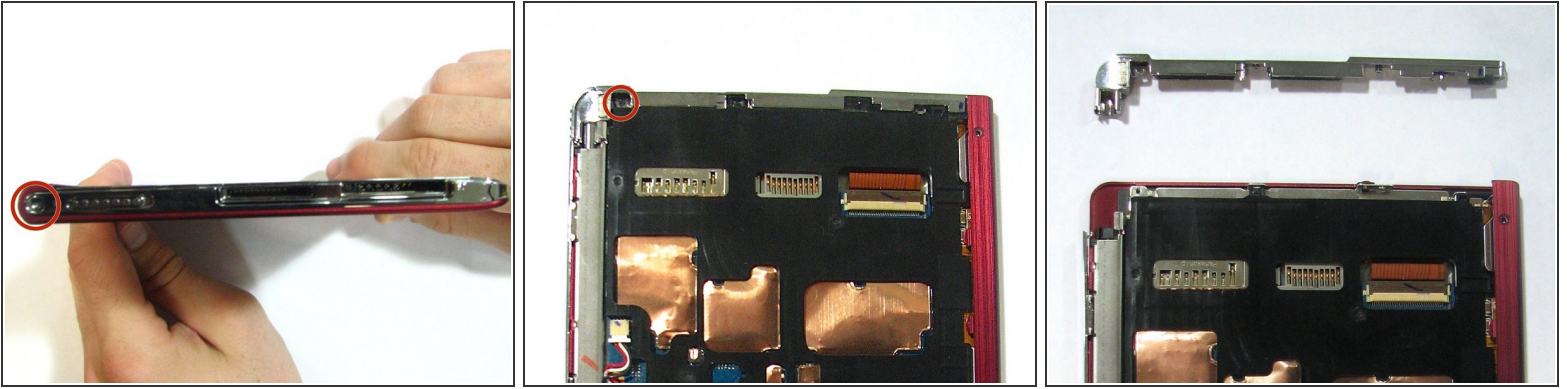
- Pry open the black casing to access the screw that is holding down the battery holder.
 - Remove the one 1.4 mm screw that is holding down the battery holder located under black casing.
 - Lift the black inner casing and the battery holder out of the device.
- ⚠ The battery holder and the black inner casing are connected by a thin strip of copper. There may be glue holding the black inner casing in place.

Step 8 — Power Button



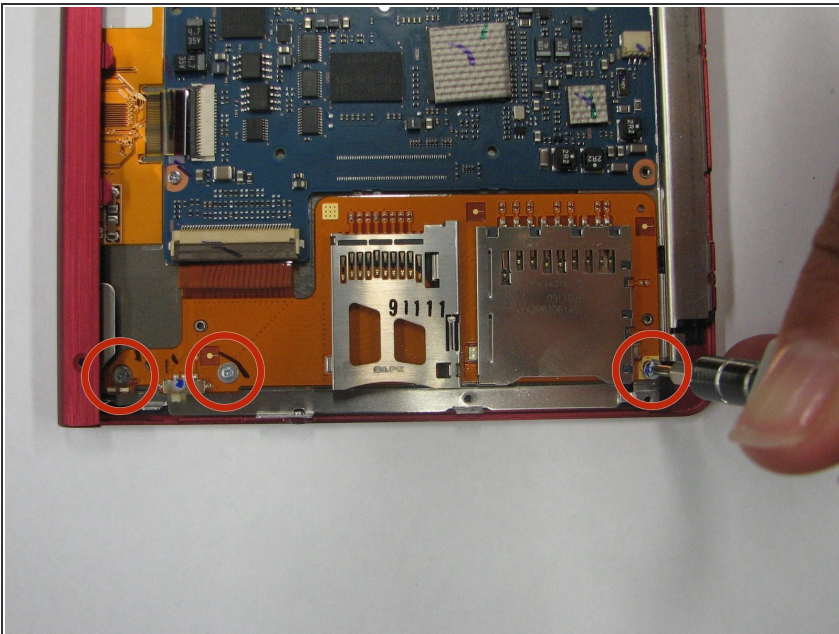
- Remove the stylus from the device.

Step 9



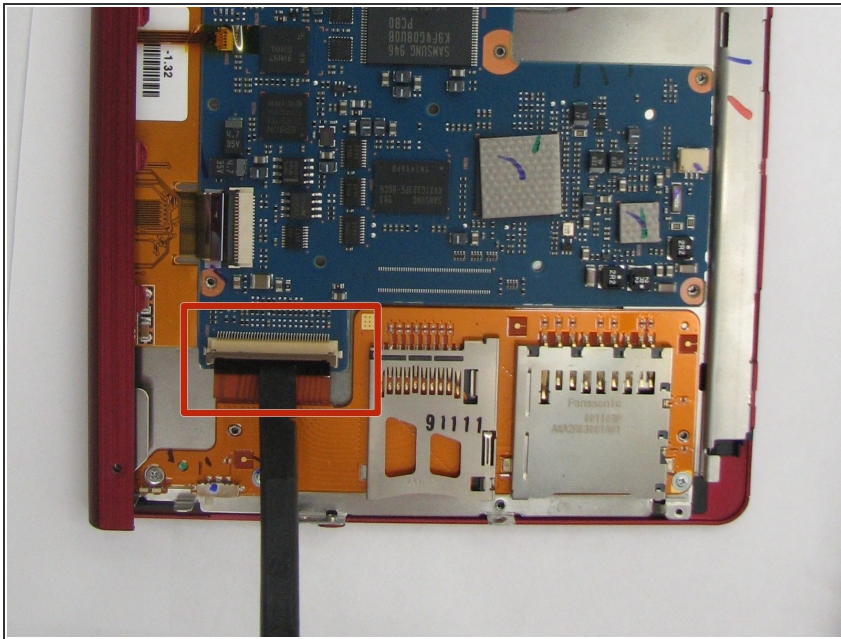
- Using the Phillips screwdriver remove the 1.4 mm screw from the top panel.
- Using the same screwdriver, remove the 1.4 mm screw from the back of the device.
- Pry apart off the top panel of the device.

Step 10 — SD and Pro Duo Memory Cards Holder



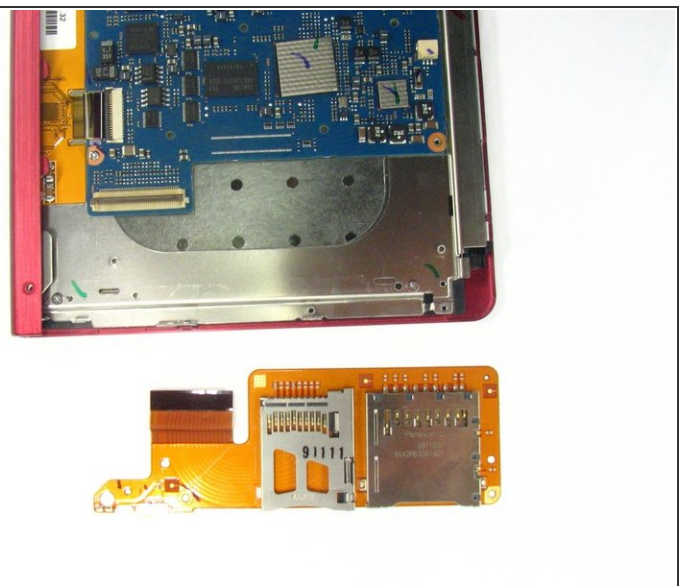
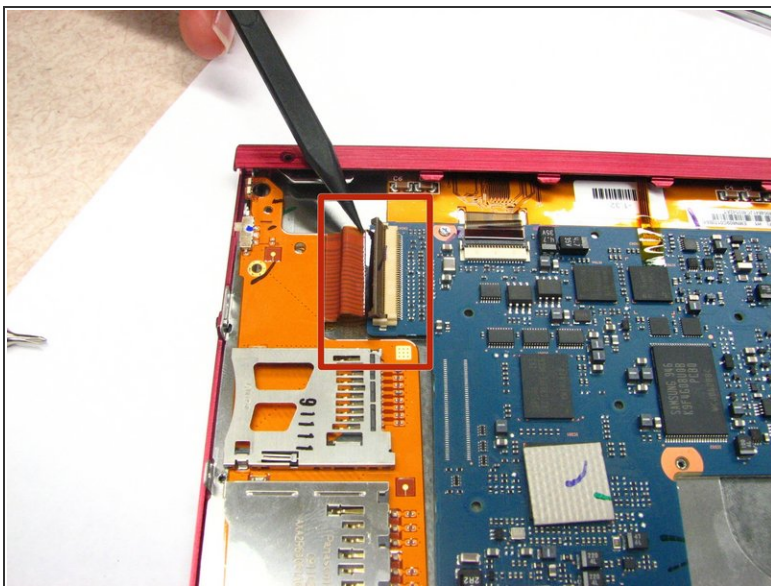
- Using a Phillips head screwdriver, remove the three 1.4 mm screws located on the memory card holder.

Step 11



- Using the flat end of the spudger, pry open the brown flap that connects the cardholder to the motherboard.

Step 12



- Pull the orange strip out of the opened brown flap.
- Remove the memory card holder.

To reassemble your device, follow these instructions in reverse order.