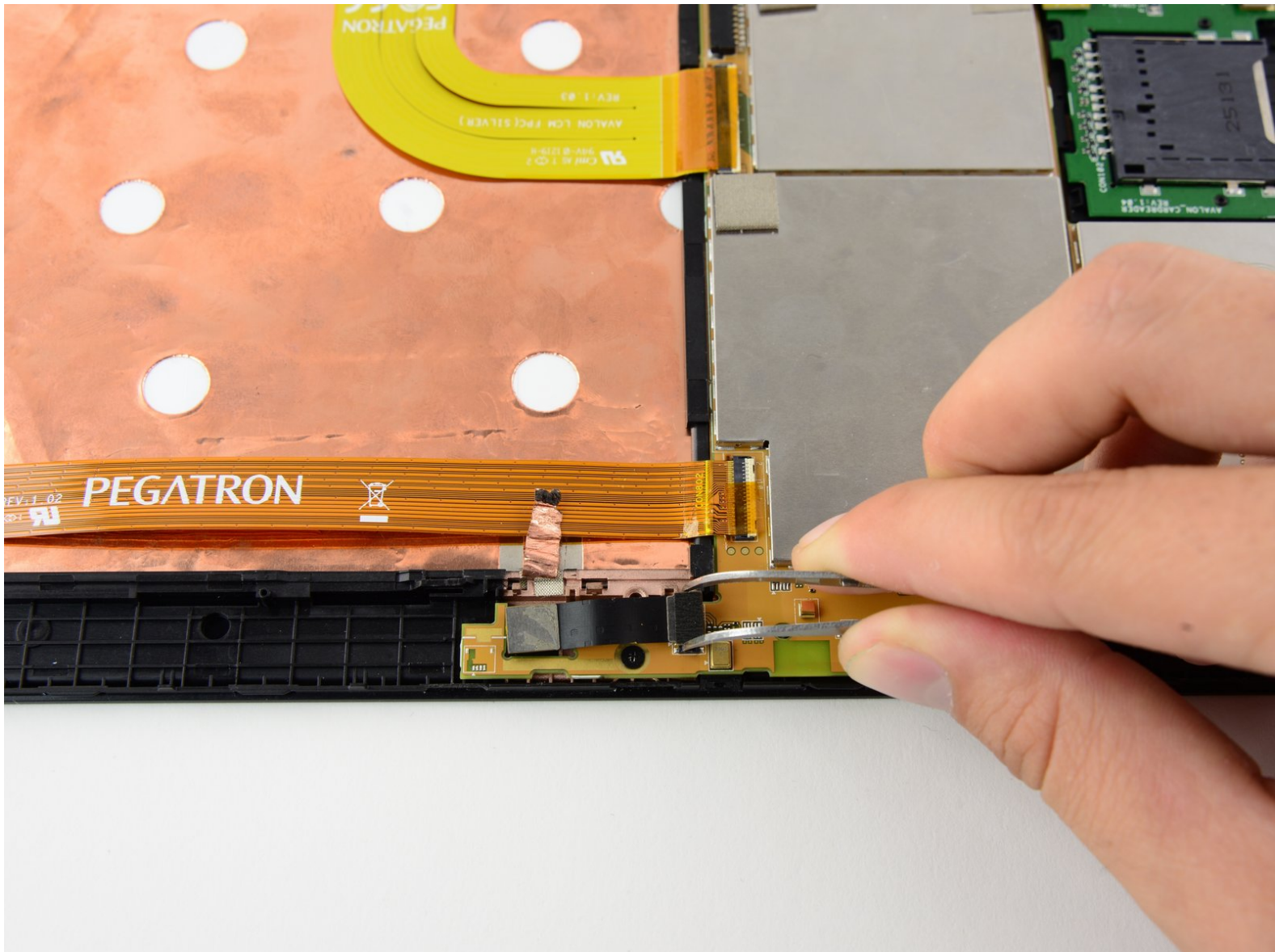




Toshiba Excite 10 AT300 Front-Facing Camera Replacement

This guide will detail the steps to replace the front-facing camera on the Toshiba Excite 10

Written By: Gus Holz



INTRODUCTION

If the front facing camera on your Toshiba Excite 10 AT300 is now longer functioning, replacement isn't difficult and this guide will give you the step by step procedure. It involves removing a single copper foil wire.



TOOLS:

- [iFixit Opening Tools](#) (1)
- [Phillips #00 Screwdriver](#) (1)



PARTS:

- [Replacement 2 megapixel Camera for Toshiba Excite 10](#) (1)

Step 1 — Remove SD Card



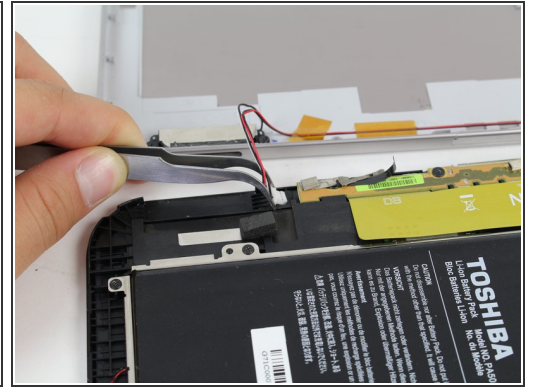
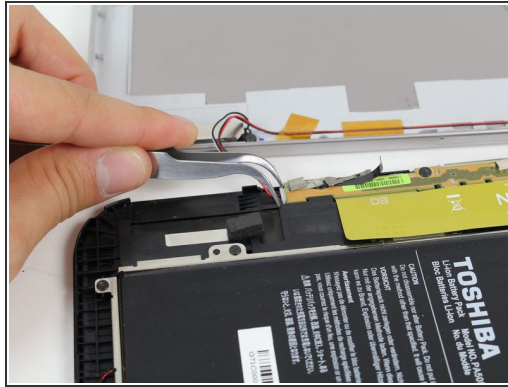
- Remove the SD card from the SD card slot.

Step 2 — Open the Tablet



- Use the opening tool to separate the front and rear panels by slipping the tool underneath the screen edge and sliding it around the entire device.
- ⓘ Make sure you unclip all of the clips on the back panel, or pulling it off will be difficult and may damage the tablet.

Step 3 — Disconnect Speaker Wires



- Remove the speaker cable from its socket by gripping both sides of the white connector piece with tweezers and pulling straight out.

⚠ Be careful not to rip the wires out of the white connector piece.

Step 4 — Remove Screws



- Using a #00 Phillips screwdriver, remove the following screws:
 - Five 3mm Phillips #00 screws

Step 5 — Remove Battery Cable



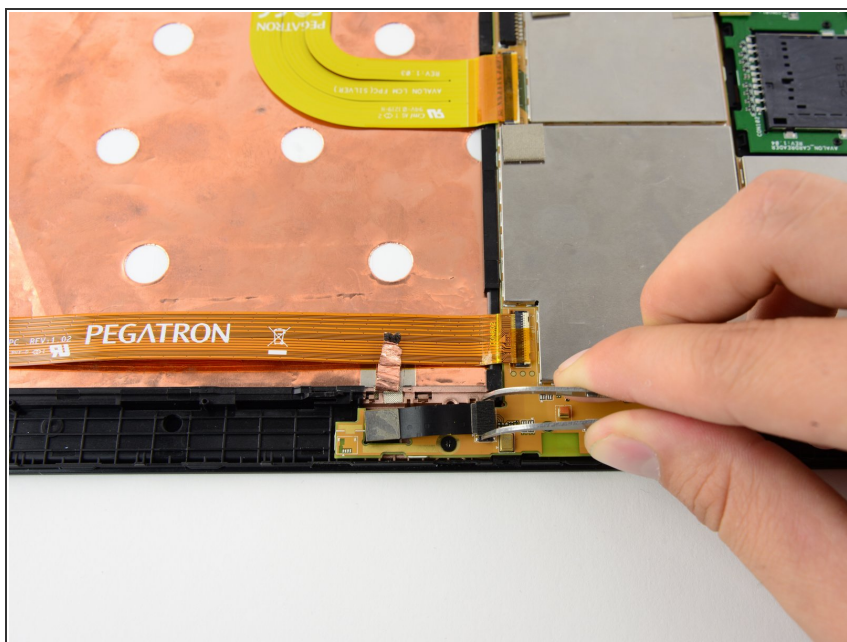
- Gently lift the battery, pulling away from the tab holding it in place at the bottom.
- While holding the battery up, use a pair of tweezers to remove the battery cable from its connector.

Step 6 — Remove the foil wire



- Using tweezers, pull the copper foil up from the back of the camera. It should peel up easily.
- ⚠ Warning: Be careful to avoid ripping the foil.

Step 7 — Remove the ribbon cable



- Carefully remove the ribbon cable from the housing by pulling gently upwards on the sides of the cable housing. The cable should come straight up off of its housing.

To reassemble your device, follow these instructions in reverse order.