

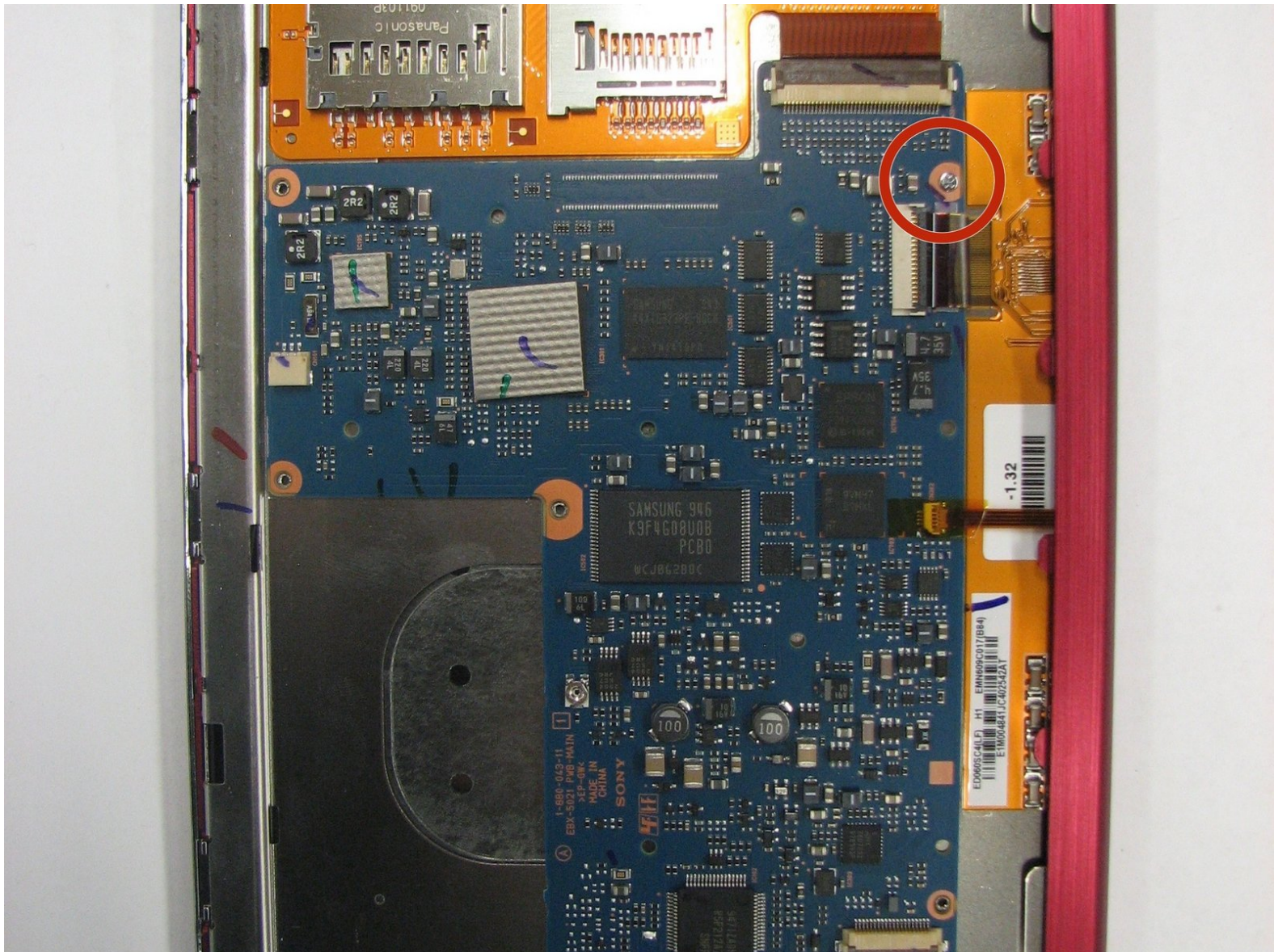


Sony Reader Touch Edition PRS-600

Motherboard Replacement

This is a guide that will show you how to remove the motherboard.

Written By: Terrika Ngobili





TOOLS:

- [Phillips #000 Screwdriver](#) (1)
 - [Spudger](#) (1)
-

Step 1 — Back Panel



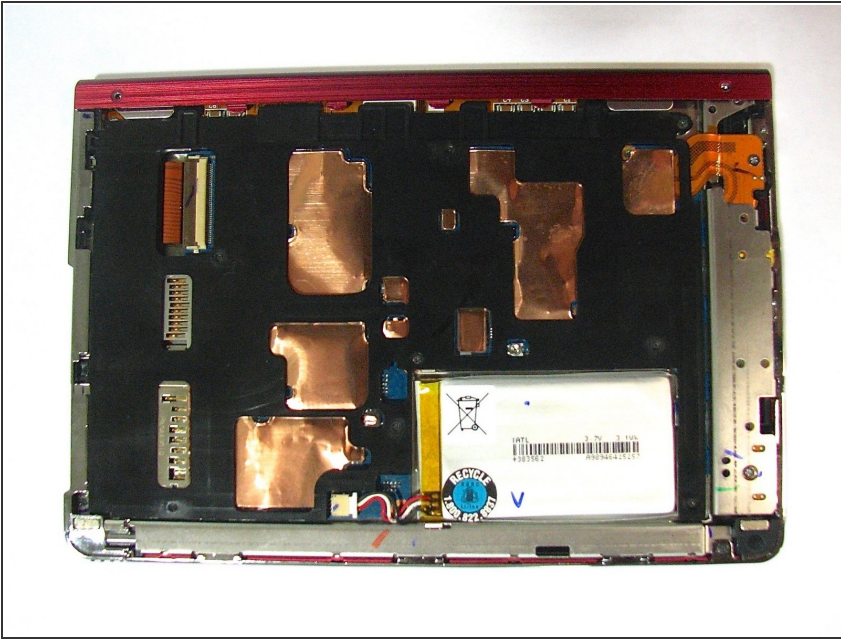
- Using the Phillips head screwdriver PH000, remove the two 1.4 mm screws that are located on the backside of the device.

Step 2



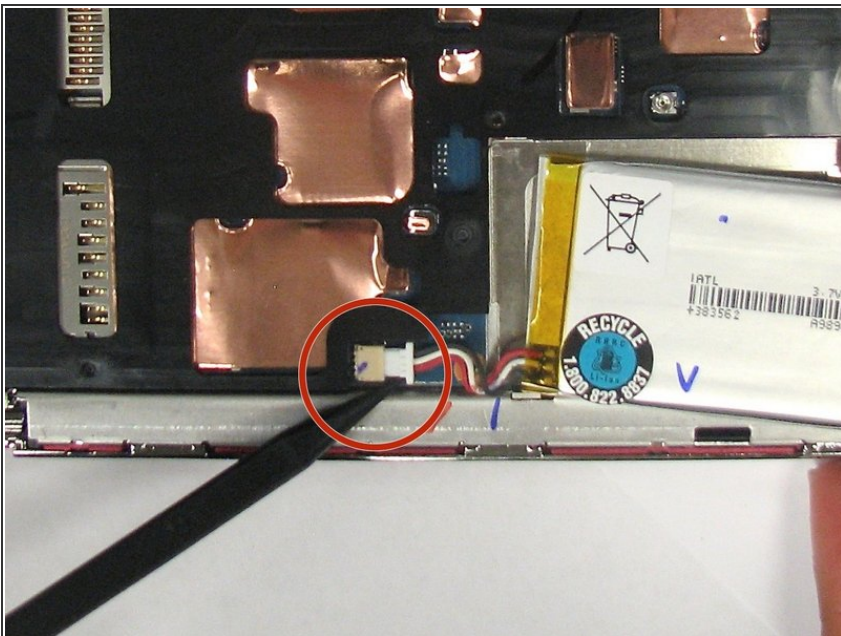
- Slide the back cover off by pushing it to the left, away from the side that held the screws.
- Remove the cover.

Step 3



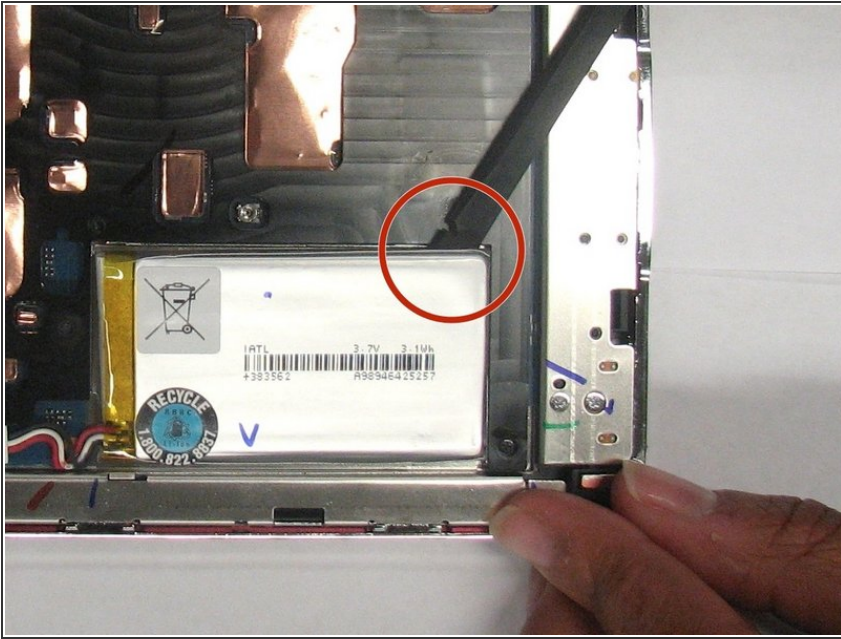
- This is what the device should look like once the back cover panel has been removed.

Step 4 — Battery



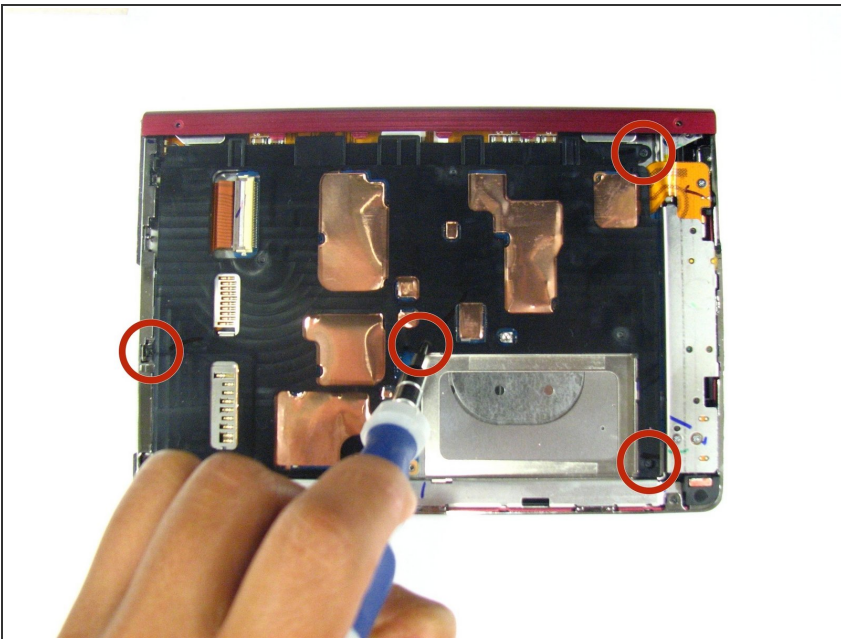
- Once the back cover has been removed locate the battery in the bottom right corner of the device.
- Using the pointed end of the spudger, push out the white plug that is connected to the battery from its beige base.

Step 5



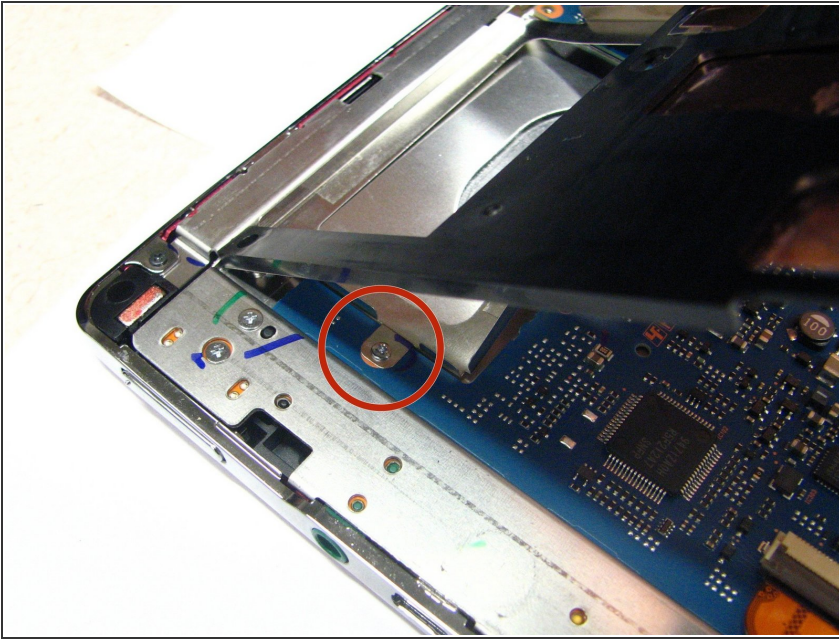
- Use the flat end of the spudger to pry the battery out of its holder. There may be glue holding it in place.

Step 6 — Inner Casing



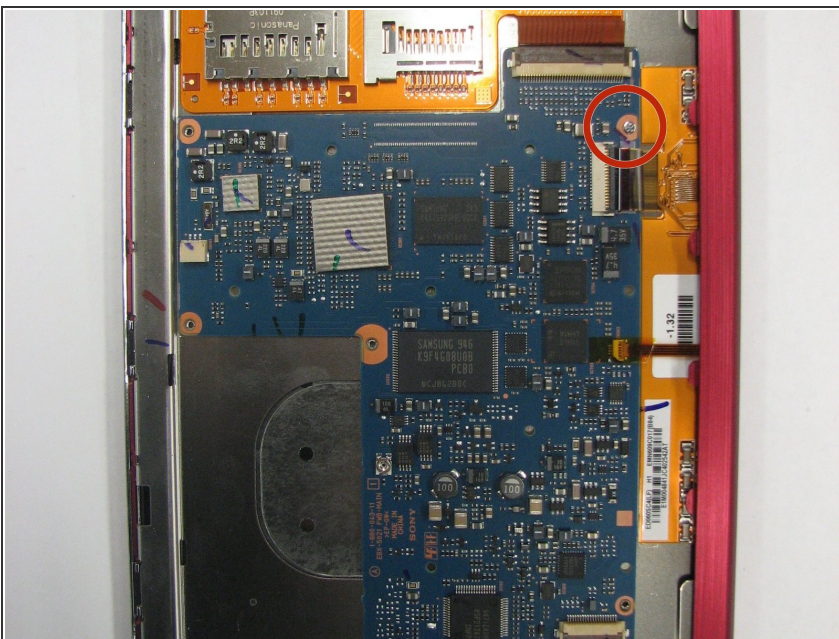
- Using a screwdriver remove the four 1.4 mm screws that are holding the black plastic casing in place.

Step 7



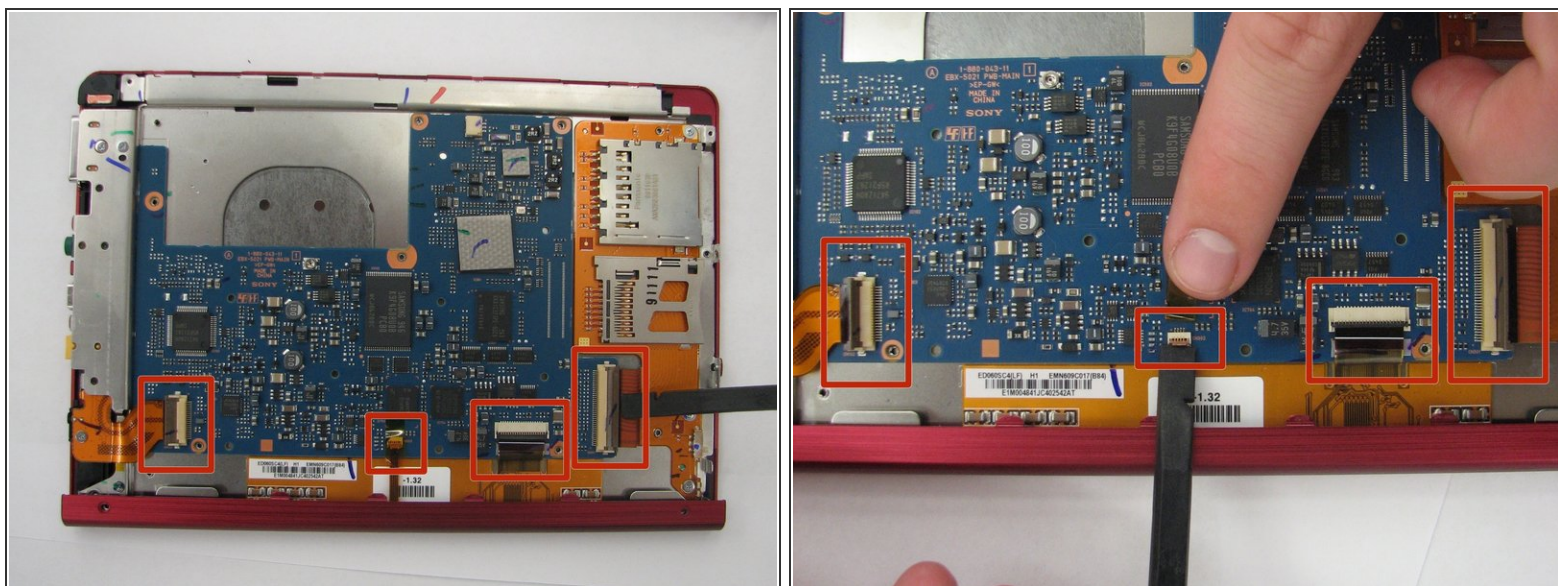
- Pry open the black casing to access the screw that is holding down the battery holder.
 - Remove the one 1.4 mm screw that is holding down the battery holder located under black casing.
 - Lift the black inner casing and the battery holder out of the device.
- ⚠ The battery holder and the black inner casing are connected by a thin strip of copper. There may be glue holding the black inner casing in place.

Step 8 — Motherboard



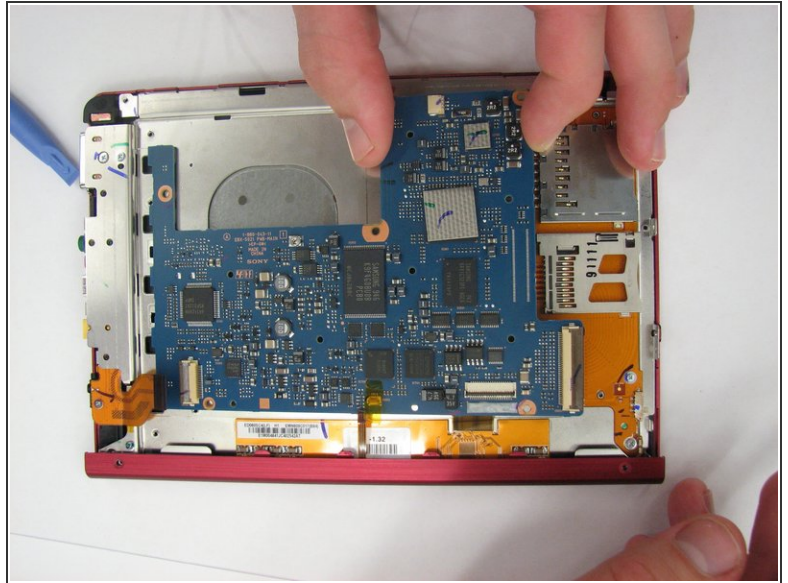
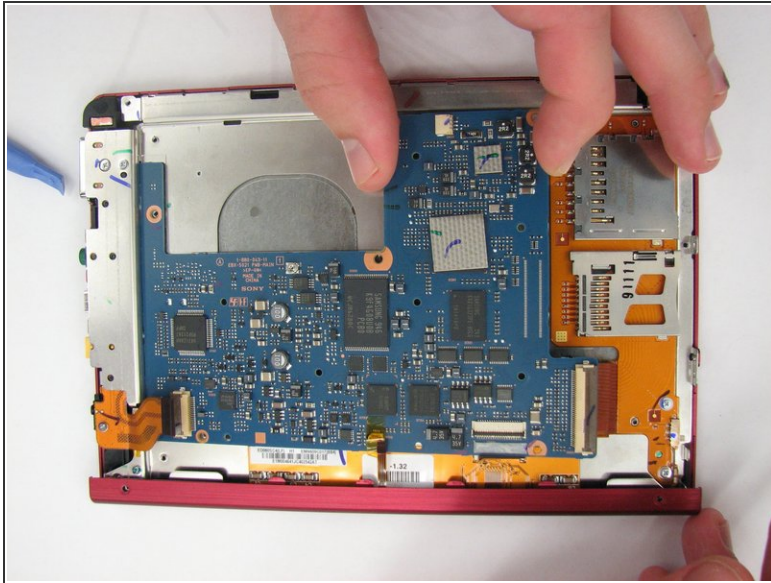
- Using a Phillips head screwdriver, remove the one 1.4 mm screw holding in the motherboard.

Step 9



- Using the flat end of the spudger, flip up the 4 latches holding down the thin, orange strips that connect the motherboard to the screen, audio/AC adapter/micro USB ports, and SD card/PRO Duo ports.
- To disconnect the the screen, audio/AC adapter/micro USB ports, and SD card/PRO Duo ports pull each orange slip away from their corresponding latch.

Step 10



- Lift the end of the motherboard closest to the memory cards and pull out.

To reassemble your device, follow these instructions in reverse order.