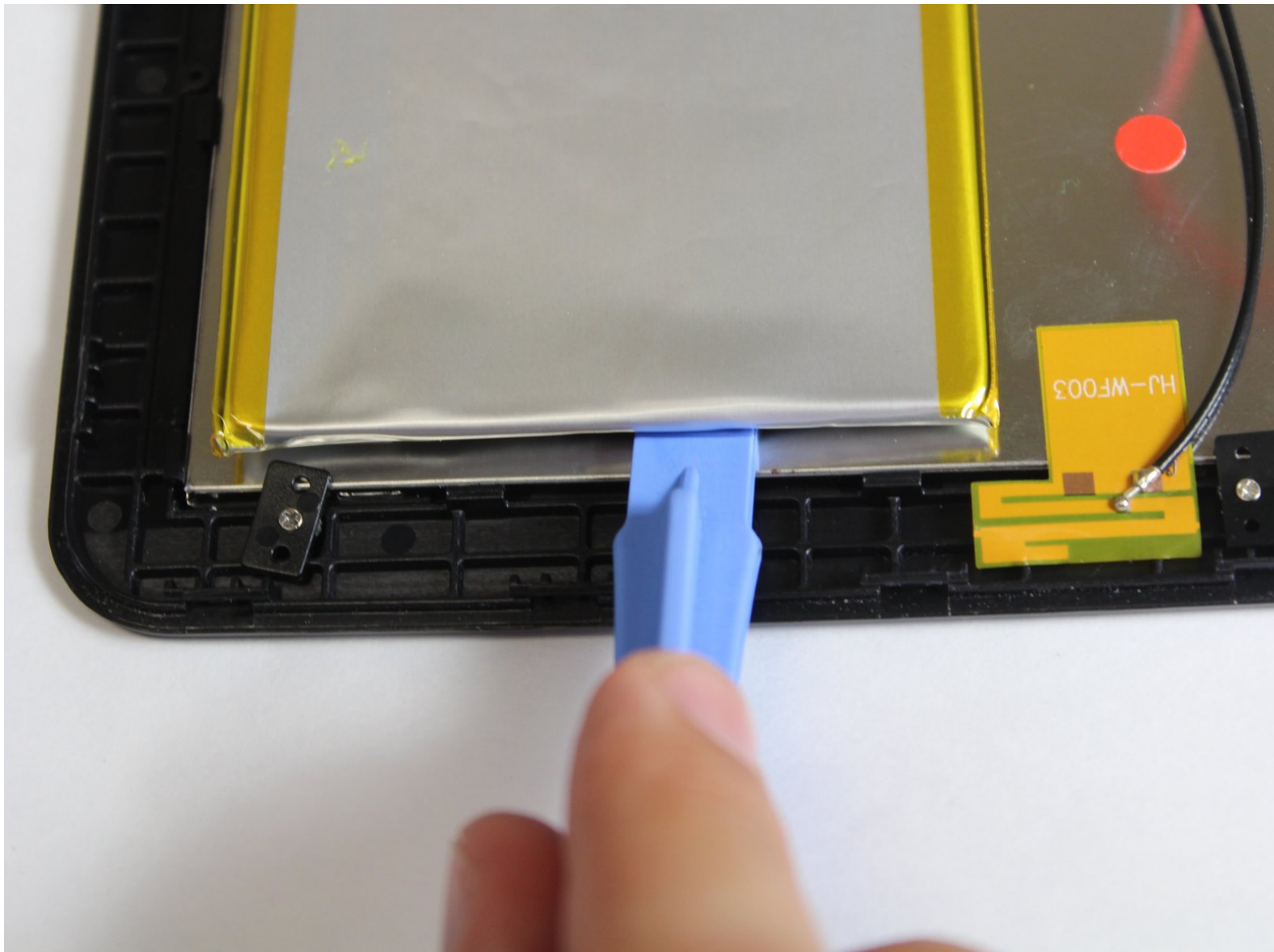




Visual Land Prestige Pro 7D Battery Replacement

Replace the battery in a Visual Land Prestige Pro 7D.

Written By: Max Hudson



INTRODUCTION

This guide will show you the steps to replacing the battery. Soldering and de-soldering will be necessary.

TOOLS:

- [iFixit Opening Tools](#) (1)
 - [Soldering Workstation](#) (1)
 - [Phillips #00 Screwdriver](#) (1)
-


Step 1 — Back Panel




- Unscrew the two 4.0mm Phillips head screws found near the ports at the bottom of the device using a PH #00 screwdriver.

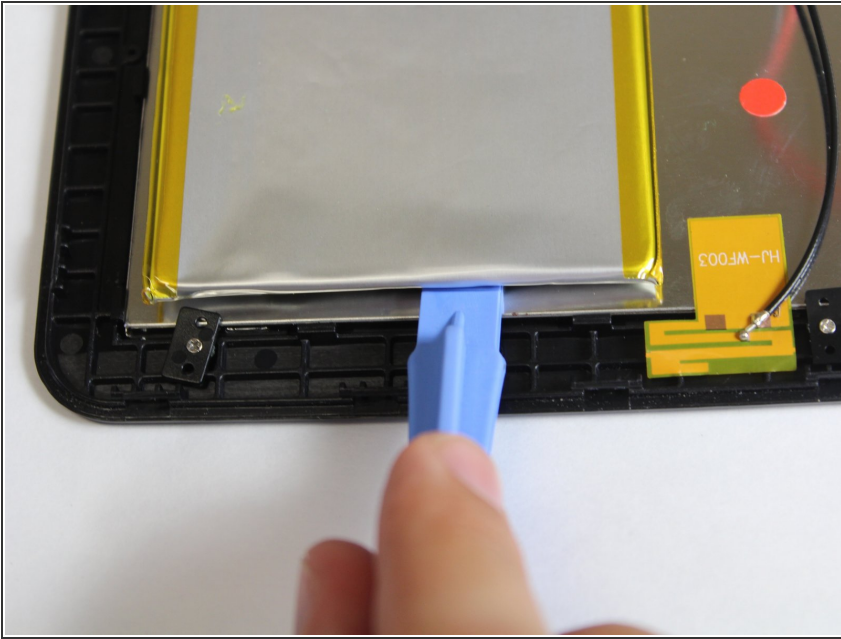
Step 2



 Be careful when taking the back panel off. The speaker is connected to both the front and back panels, and may get pulled out if you are not gentle when lifting the back panel away.

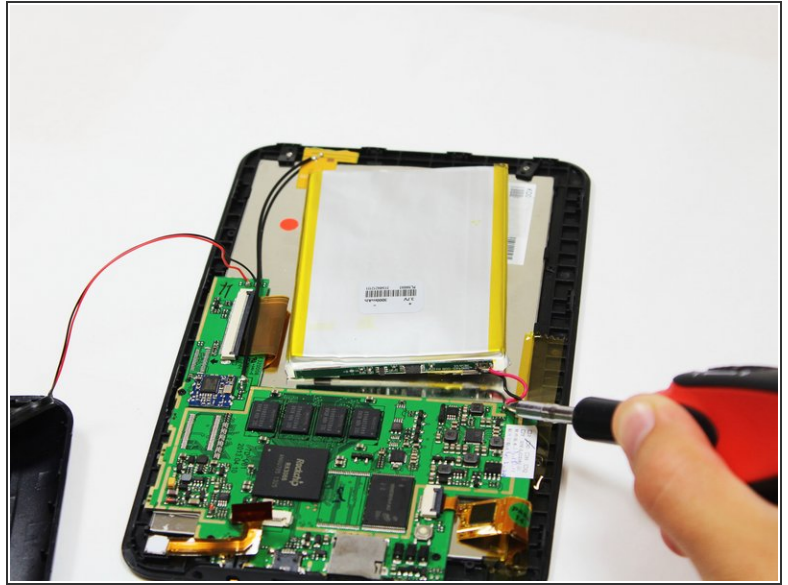
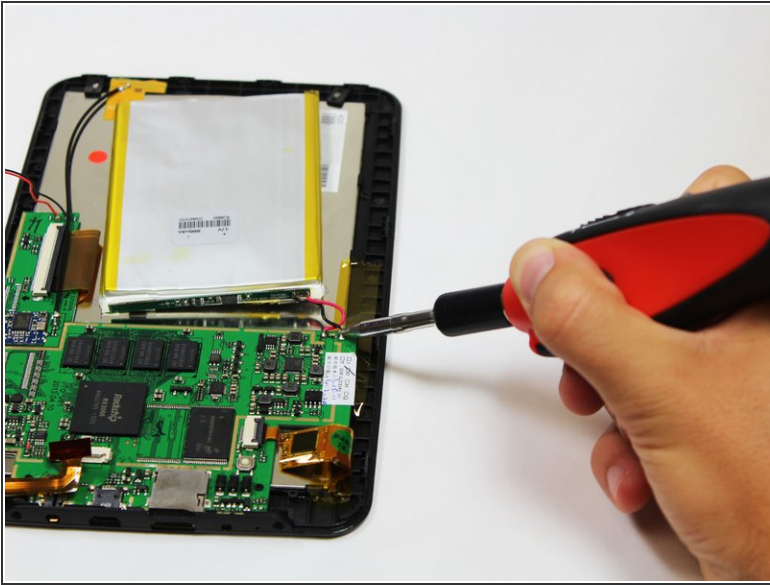
- Slide the plastic prying tool in between the front and back panel and pry them apart on all 4 sides.
 - It may be easiest to start on one of the sides, and work your way around the device. The bottom, with the ports, is the most difficult side and can be saved for last.
-  There are small latches that make this difficult. Moderate force may be required to separate the two panels.

Step 3 — Battery



- Pry a thin tool under the battery.
- ⓘ Be gentle and try not to bend the battery.
- Slide the tool around all sides of the battery. Separate it evenly on all sides for the best result.

Step 4



⚠ Soldering guns are hot and can easily damage the device.

- Desolder the two connections between the red and blue wires where the battery connects to the circuit board. Soldering guns are hot and can easily damage the device.
- ⓘ For soldering information, see our guide: [How To Solder and Desolder Connections](#).
- ⓘ If you are removing the LCD display this step is unnecessary.

To reassemble your device, follow these instructions in reverse order.