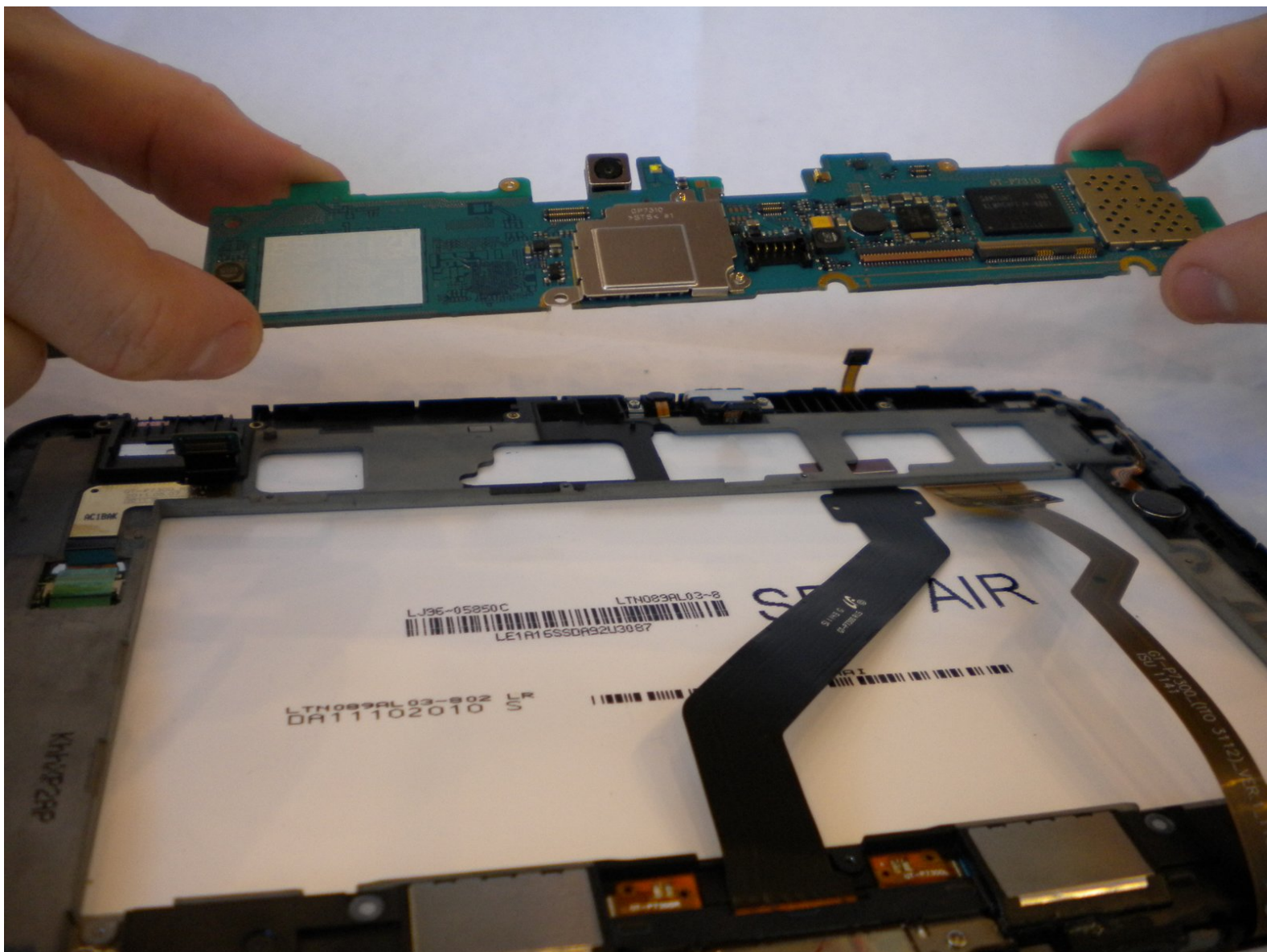




# Samsung Galaxy Tab 8.9 Motherboard Replacement

Written By: Aleezee True



# INTRODUCTION

Use this guide for replacing the motherboard on a Samsung Galaxy Tab 8.9. The guide shows how to disassemble the device to replace the motherboard.

---

## TOOLS:

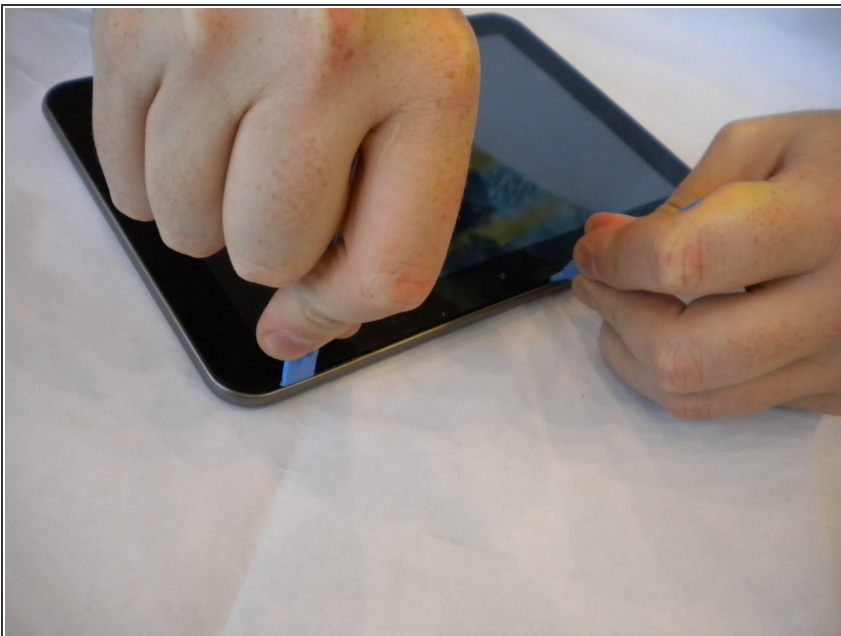
- [Phillips #00 Screwdriver](#) (1)
  - [iFixit Opening Tools](#) (2)
  - [Spudger](#) (1)
  - [Tweezers](#) (1)
-

## Step 1 — Battery



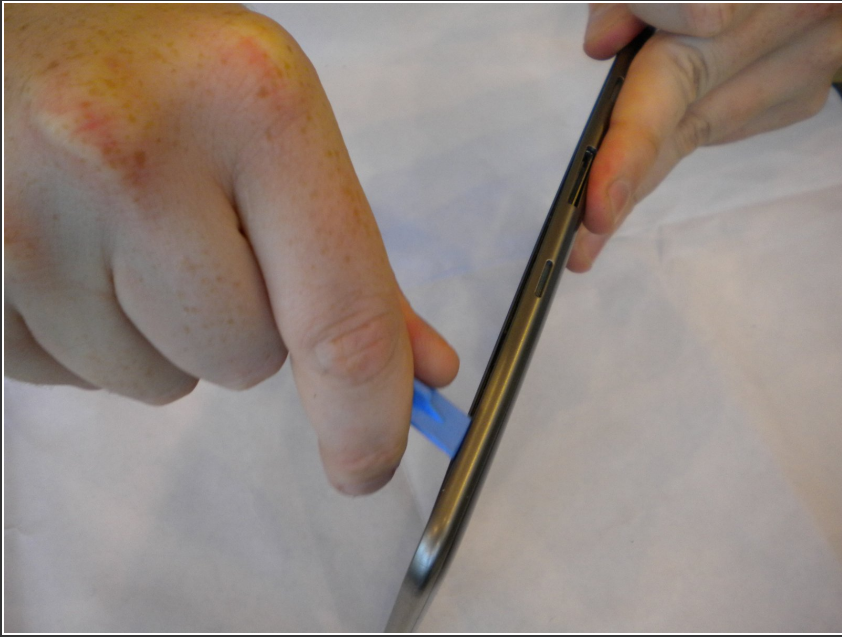
- Insert a plastic opening tool between the back cover and the screen of the Samsung Galaxy Tab 8.9.

## Step 2



- 6 cm [2 in] away from the first plastic opening tool, insert a second plastic opening tool between the back cover and the screen.

### Step 3



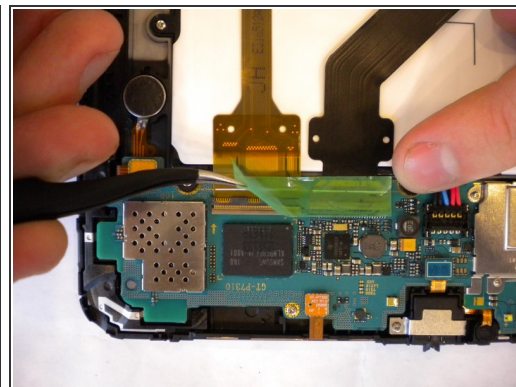
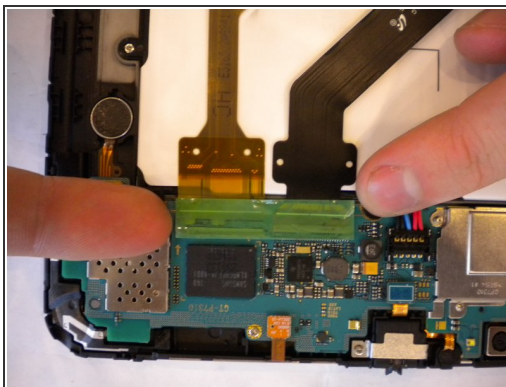
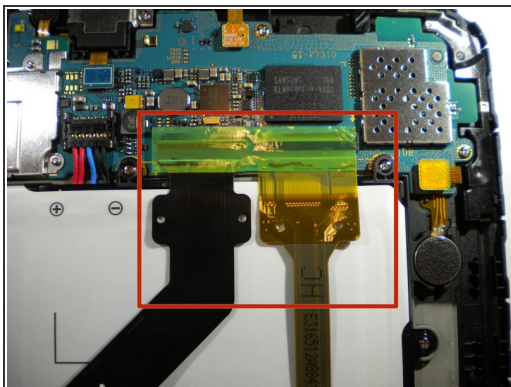
- Slide the second plastic opening tool along the edge of the device to separate the back cover from the screen.

### Step 4



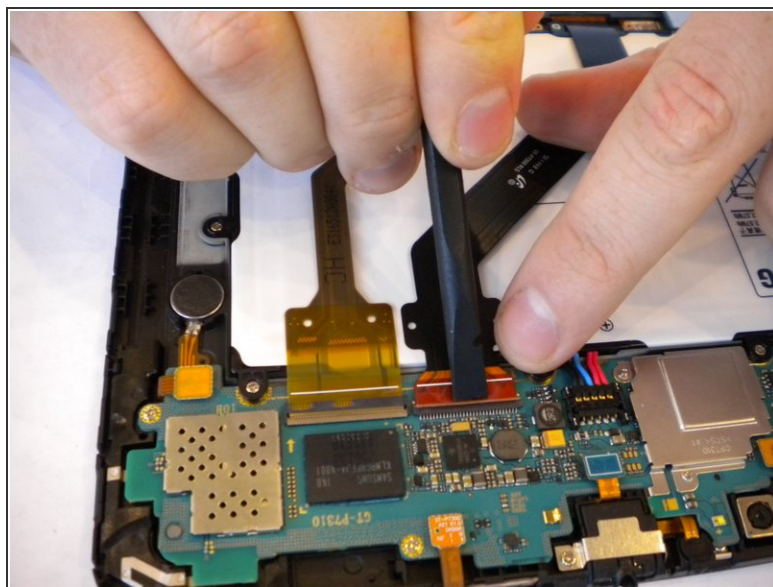
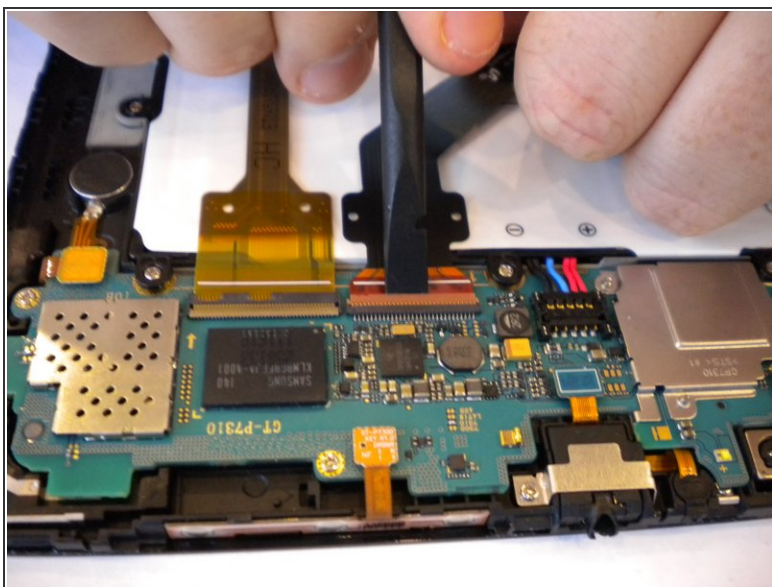
- Use your hands to open the back cover.

## Step 5 — Remove Green Tape



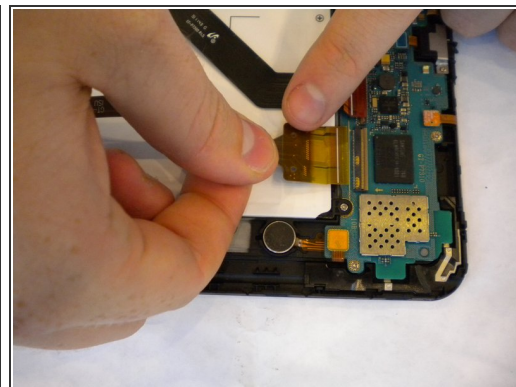
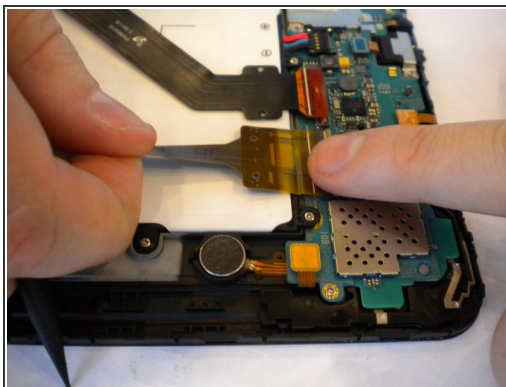
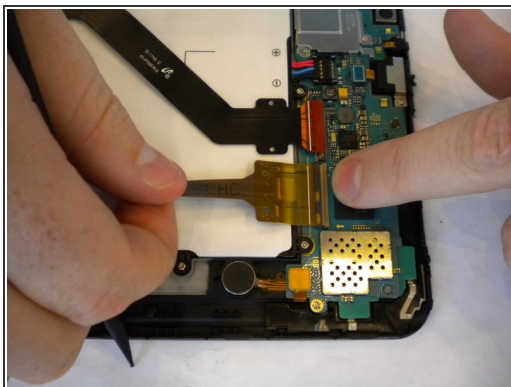
- Use tweezers to peel up the green tape located on top of the two flexible ribbon cables.

## Step 6



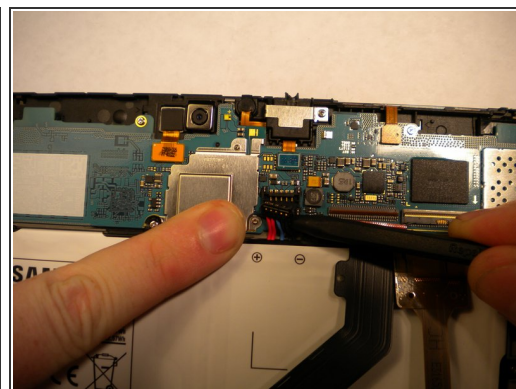
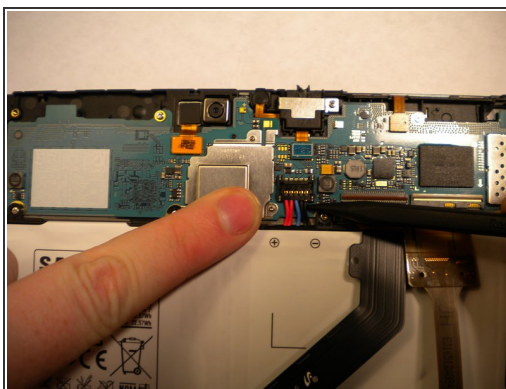
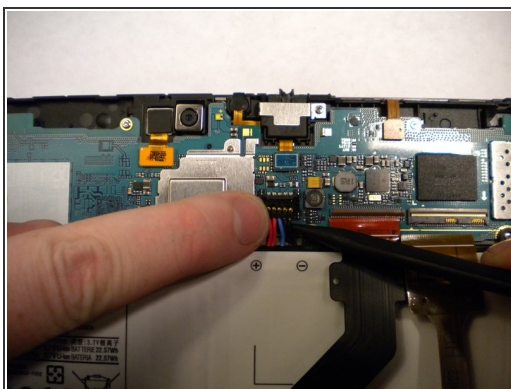
- Insert a spudger under the orange tab.
- Gently pry up the tab to disconnect the black flexible ribbon cable from the motherboard.

## Step 7



- Carefully pull out the yellow flexible ribbon cable to disconnect it from the motherboard.

## Step 8 — Disconnect Battery from MotherBoard



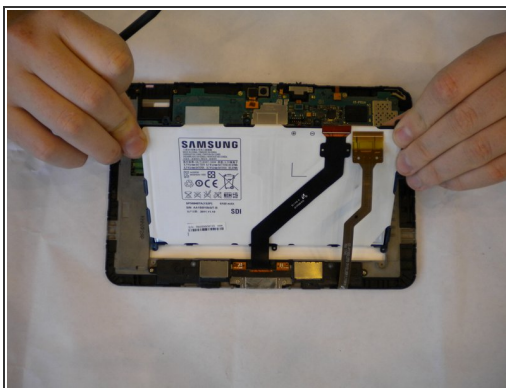
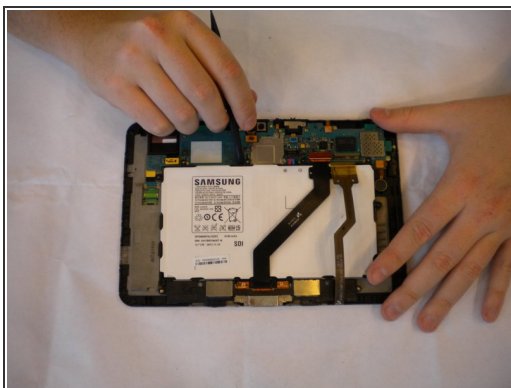
- Insert the spudger under the red, black, and white cables.
- Pry up and detach the battery from the motherboard.

## Step 9



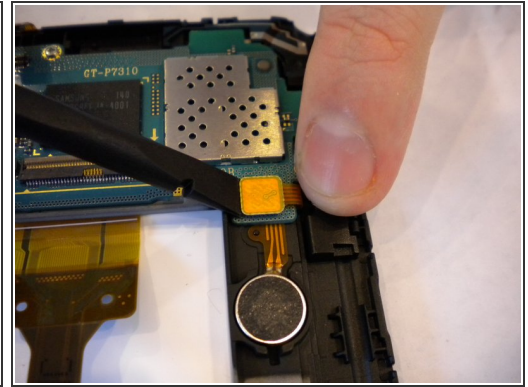
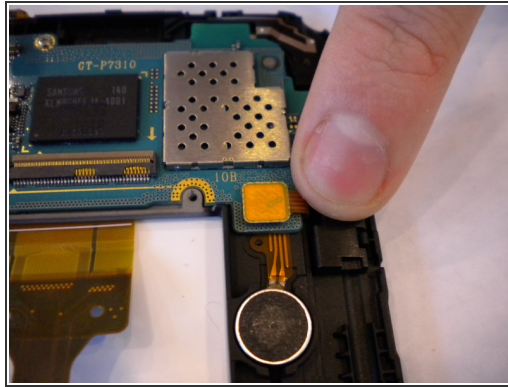
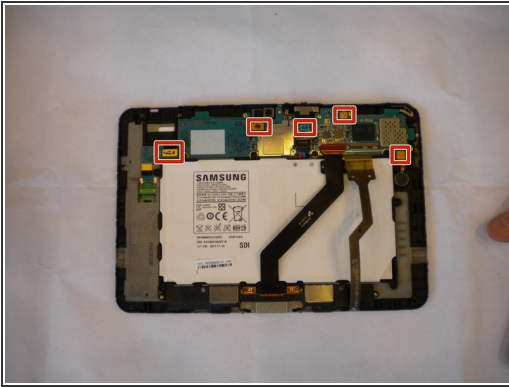
- Use a Phillips #00 screwdriver to remove the nine 1 mm screws located around the battery.

## Step 10 — Remove the Battery



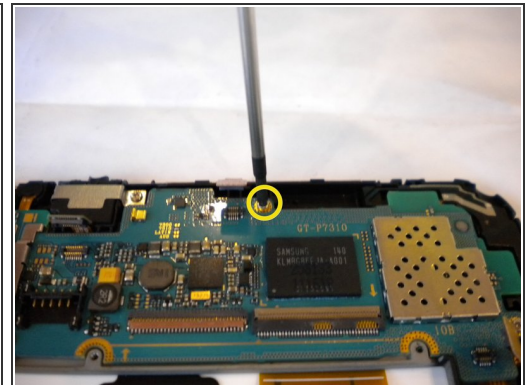
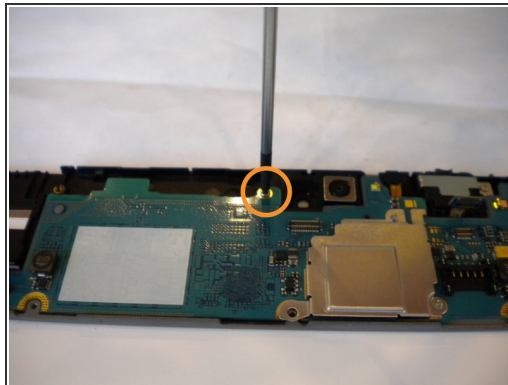
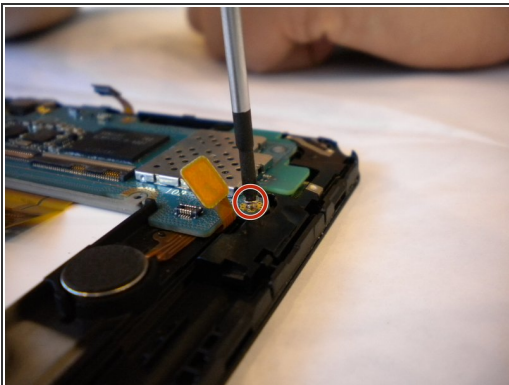
- Use a spudger to lift up and separate the battery from its housing.

## Step 11 — Motherboard



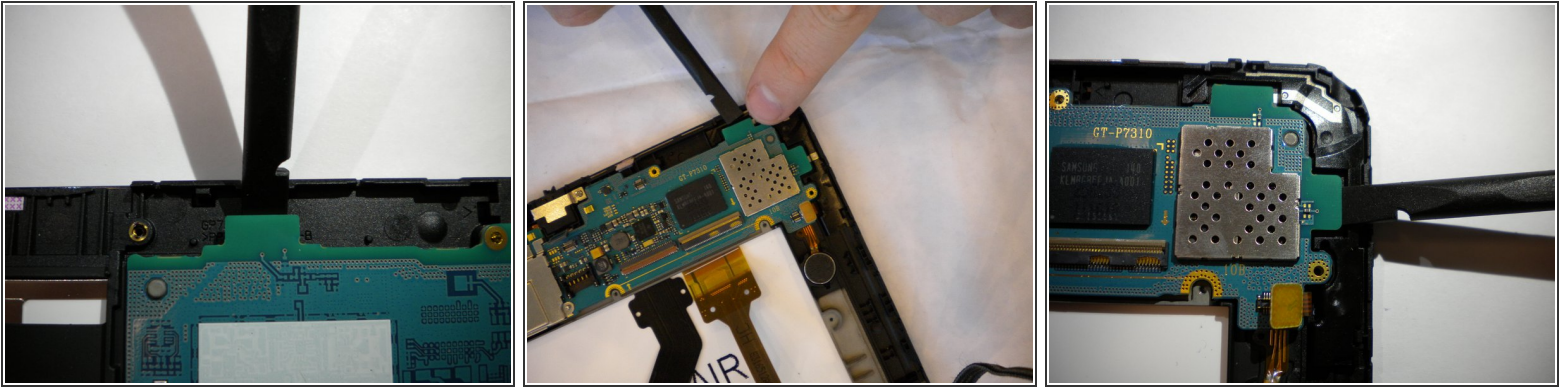
- Locate the motherboard and 5 connectors on it.
- Pry up and detach the connector from the motherboard using the flat edge of the spudger.
- Repeat for the 4 remaining connectors.

## Step 12



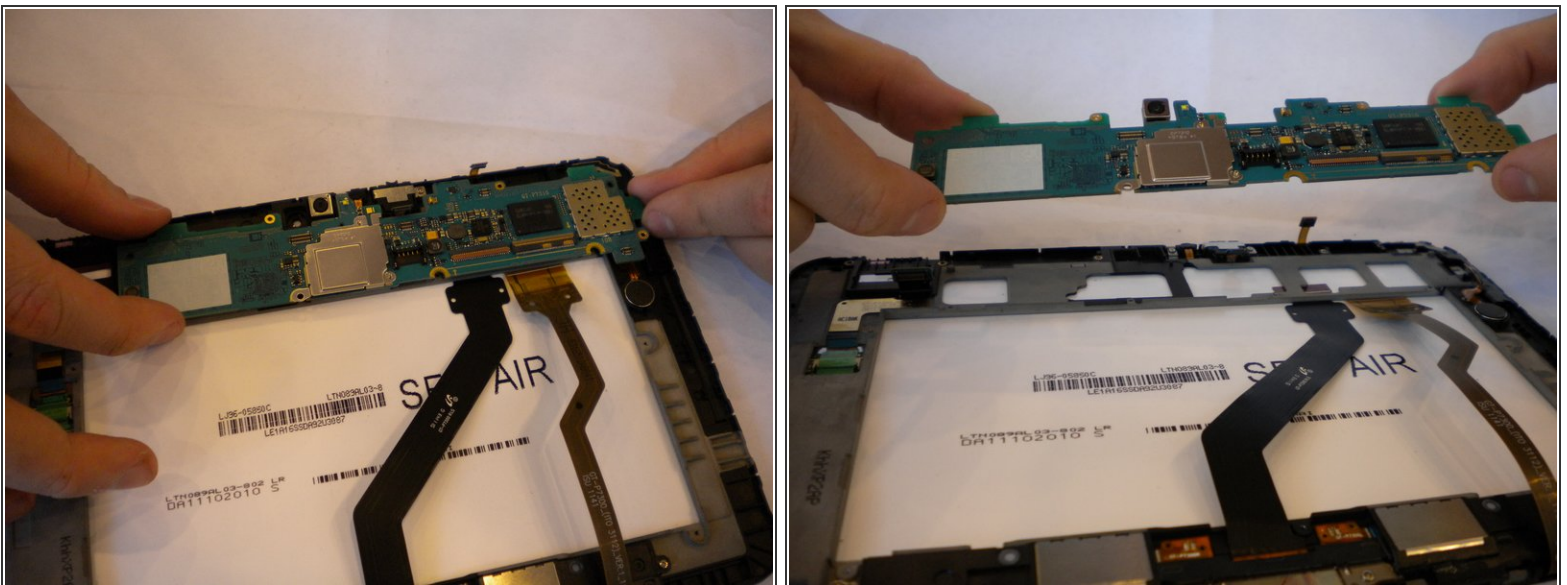
- Using the Phillips #00 screwdriver, unscrew the 3 screws (1mm) that are located near:
  - Camera
  - Power and volume buttons
  - Tilt sensor

## Step 13



- Using the flat edge of the spudger, pry and lift up the motherboard.

## Step 14



- Pull away the motherboard from the housing.

To reassemble your device, follow these instructions in reverse order.