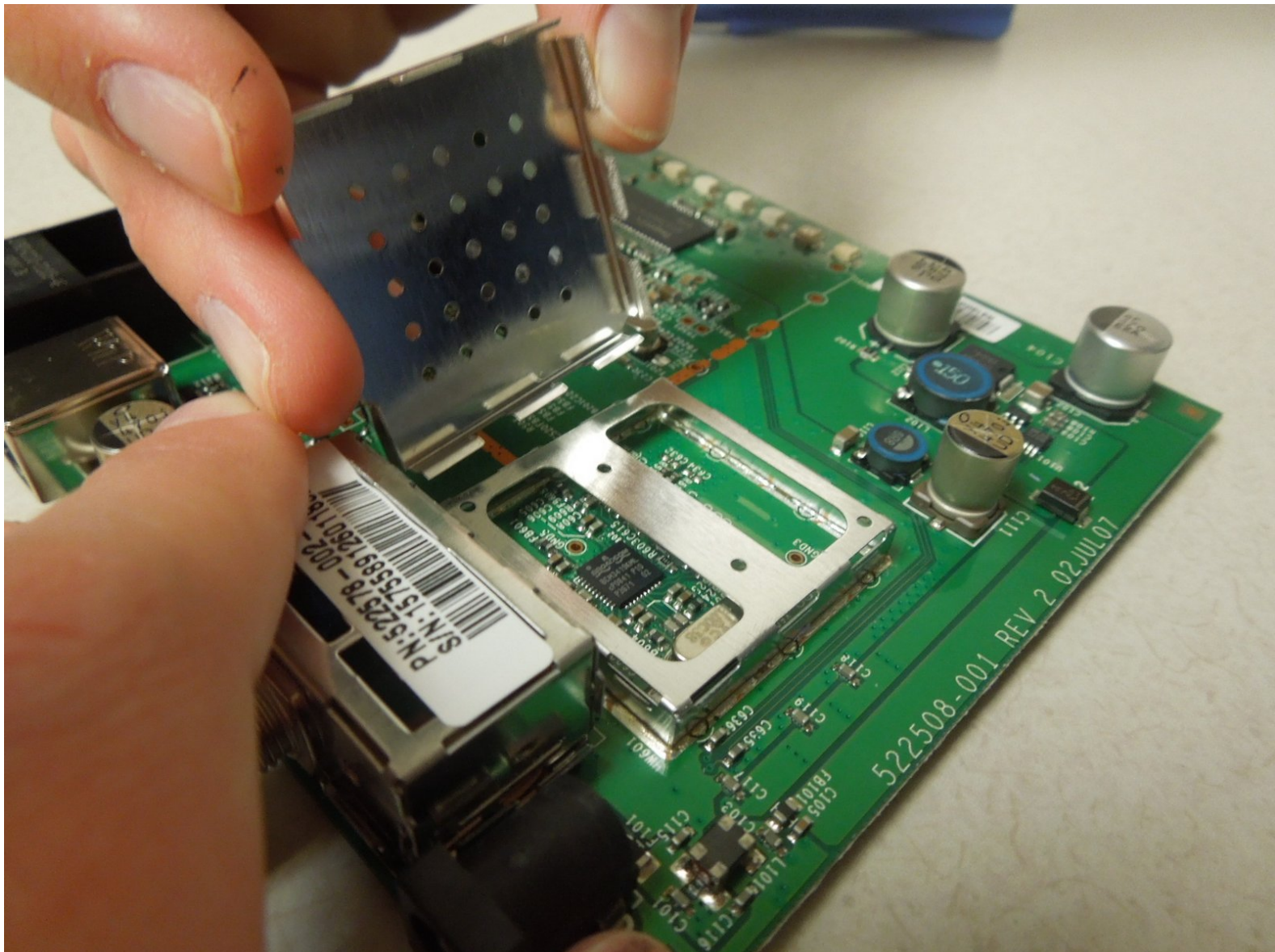




# Motorola SURFboard SB5101 Metal Receiver Replacement

Use this guide in order to replace the metal receiver inside the device.

Written By: Cayce Rast



---

## INTRODUCTION

The metal receiver on the motherboard may need to be removed if electrical components below the plate need to be accessed, or if the metal plate itself needs to be replaced.



### TOOLS:

- [iFixit Opening Tools](#) (1)
  - [64 Bit Driver Kit](#) (1)
  - [Tweezers](#) (1)
-

## Step 1 — Removing the Screw on the Back of the Device



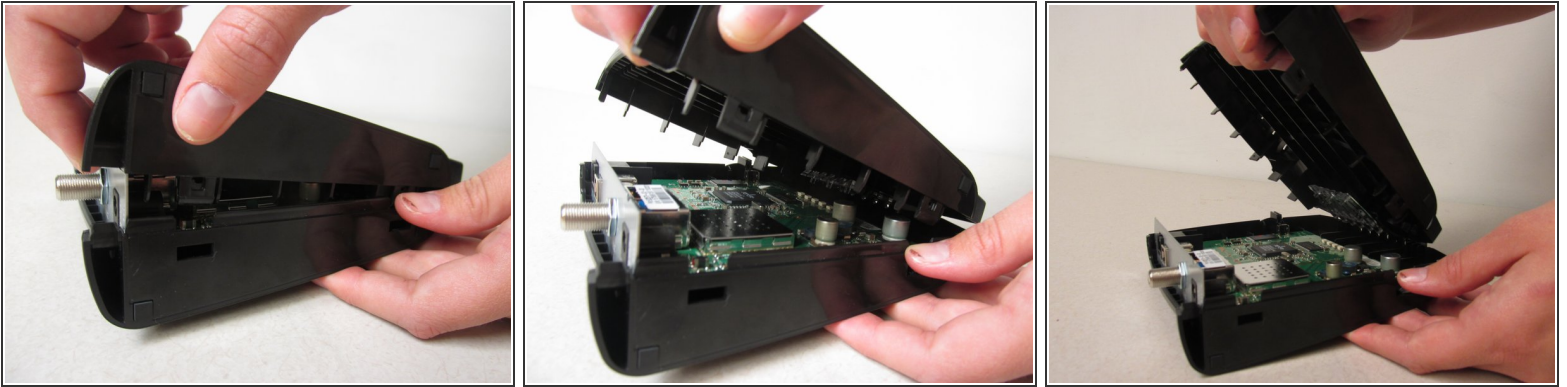
- Locate the single 1 cm screw on the back of the device (enclosed by a red circle in the image).
- Using a screwdriver with a Torx 10 hex screw, begin removing the 1cm screw by turning the screwdriver counterclockwise.
- Remove the screw and set aside.

## Step 2 — Unlocking Router



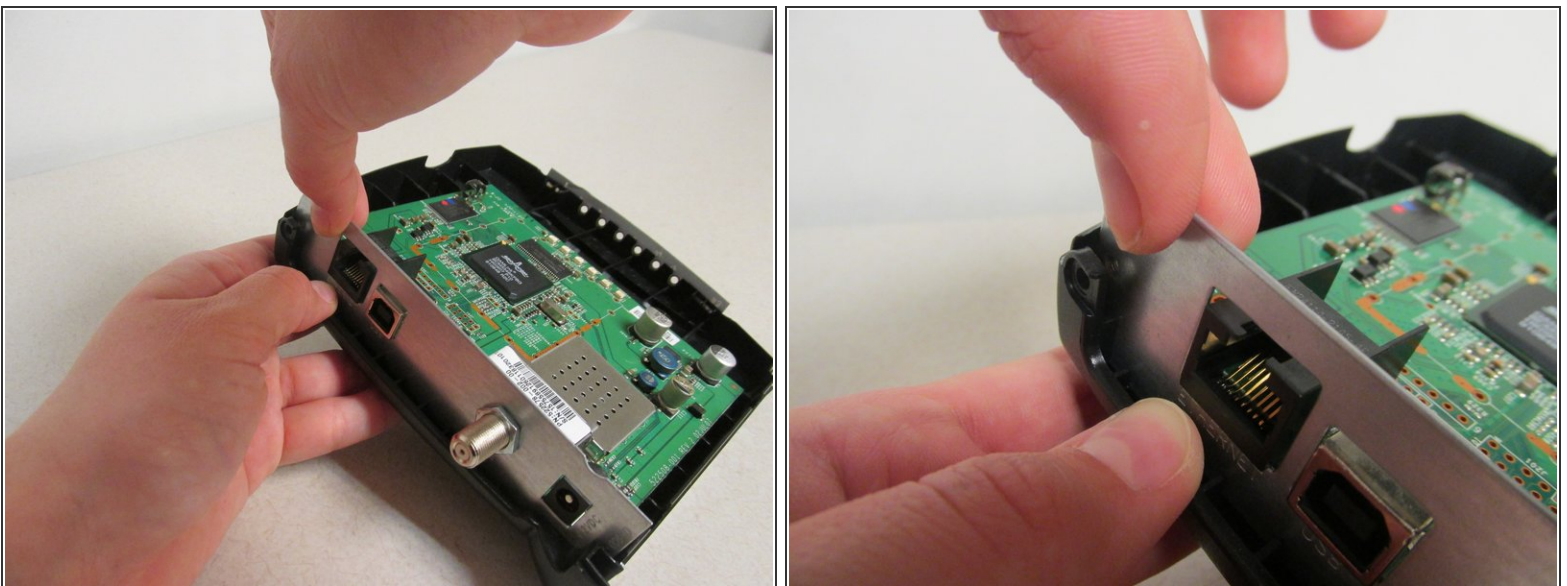
- ⓘ Rotate your device 90 degrees to the right so that the bottom of the device is facing you.
  - Locate the two horizontal slots on the bottom of the device.
- ⓘ You may need to remove the sticker on the bottom of the device to access these slots.
  - Insert the back end of the forceps into one of these slots. You may also use any other flat, narrow tool that fits into the slots.
  - Gently push the forceps into device. You should feel movement or hear a click, signifying this side of the device is unlocked.
  - Repeat with the other slot to completely unlock the device.

### Step 3 — Removing the Cover



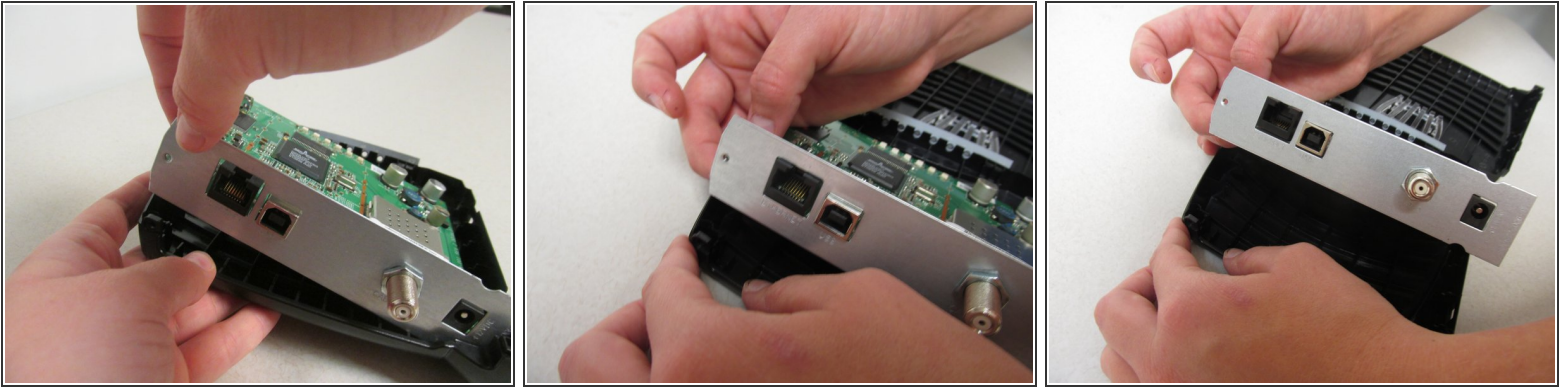
- Grab the top and the bottom of the device and gently pull the device open.
- Continue pulling until you have completely removed the top cover of the device.
- ☑ When reassembling your device, make sure the standby key is properly in place. See the [Standby Key Guide](#) for more information.
- ☑ Also ensure that when you close the two sides of the cover the LED indicator lights are inside the information panel.

### Step 4 — Grabbing the Motherboard



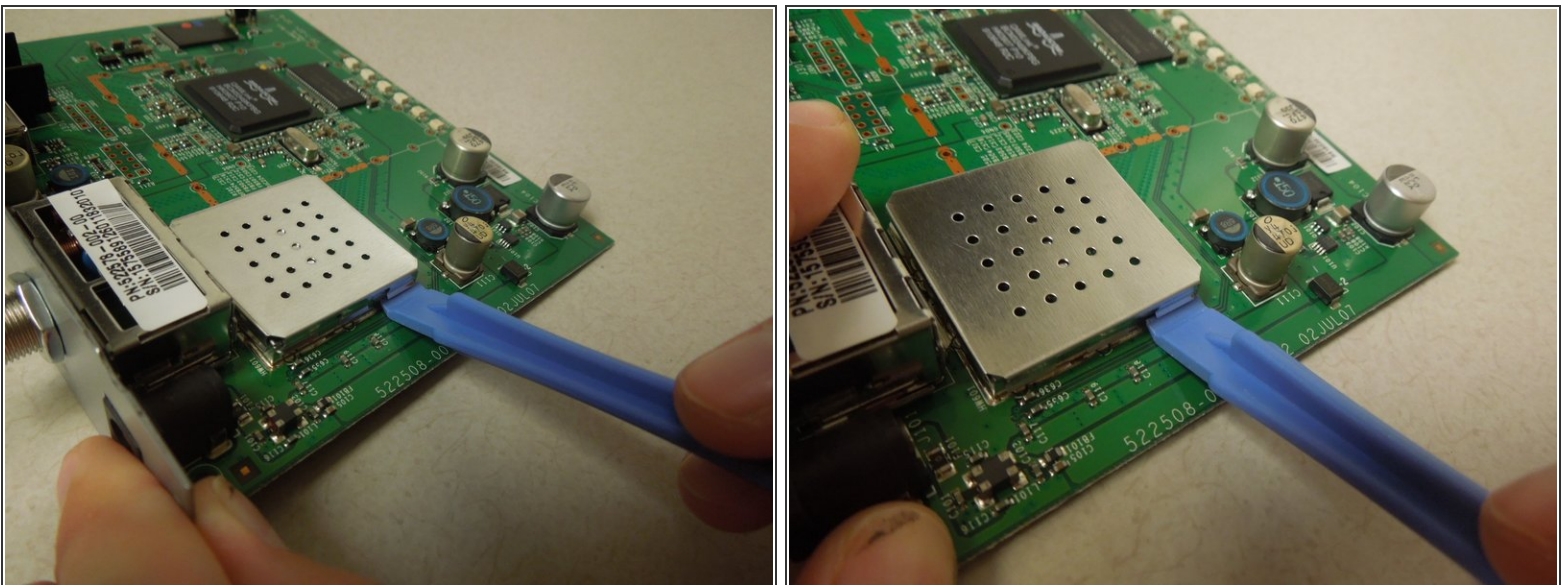
- After opening the router, grab the upper left corner of the silver face plate and gently pull the motherboard out of the slot from within the case.

## Step 5 — Removing the Motherboard



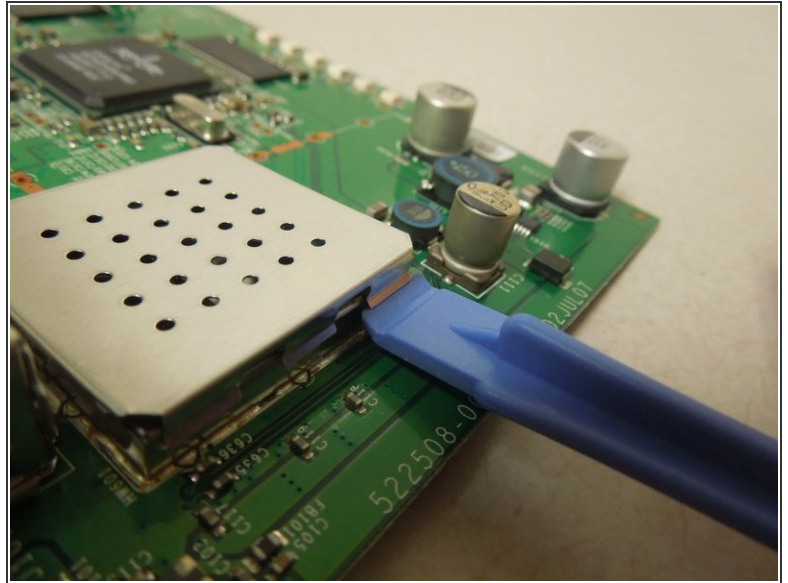
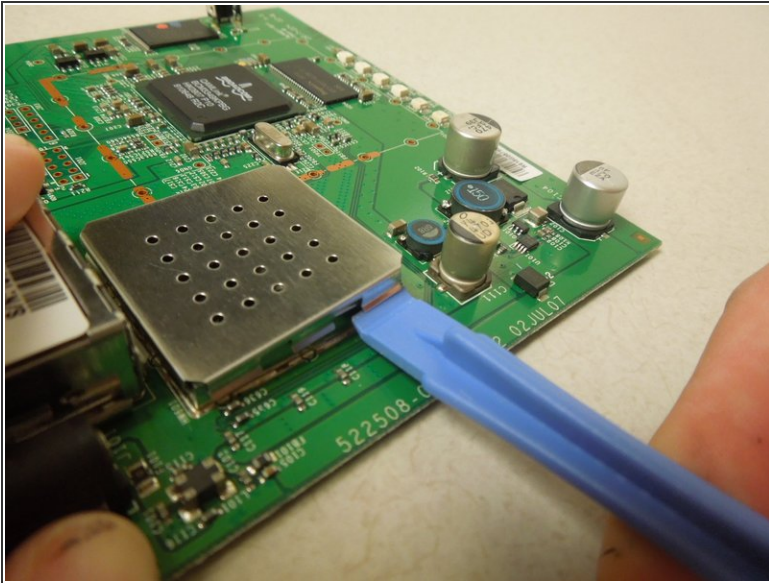
- Slowly lift the motherboard out of the case.

## Step 6 — Positioning the Prying Tool



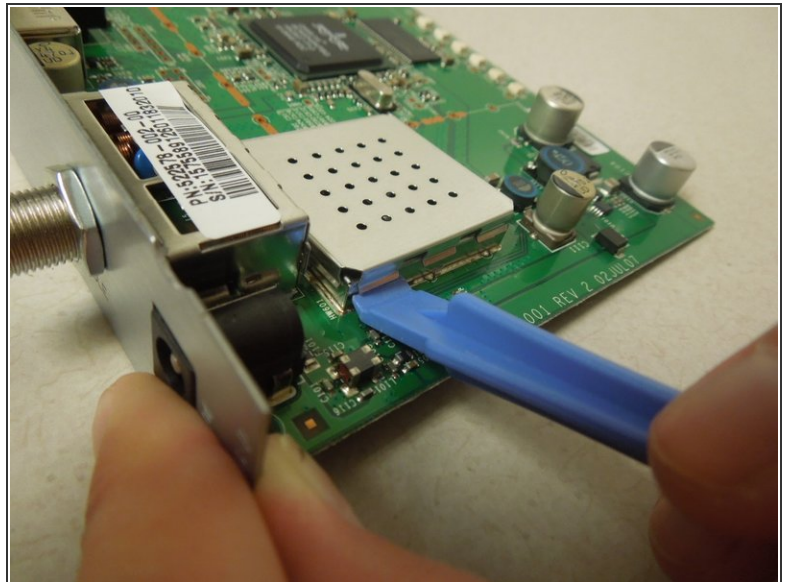
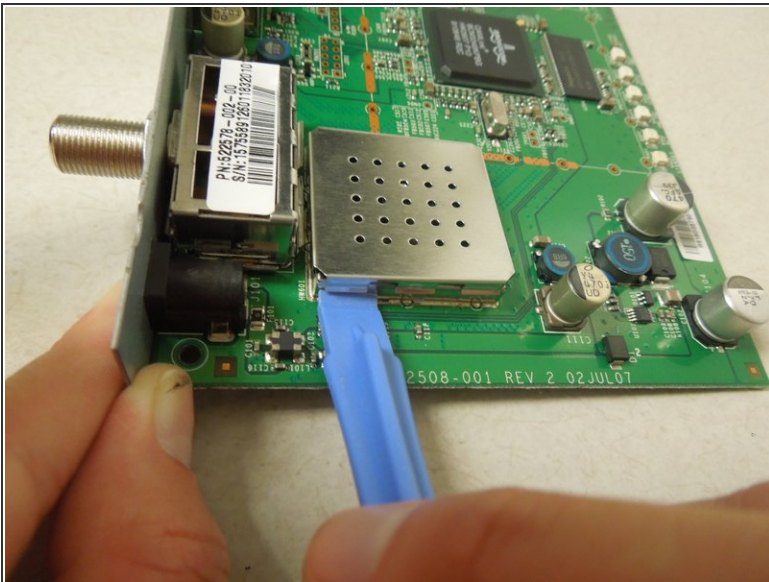
- Holding the motherboard by the metal face plate, position the flat end of a prying tool under one of the prongs of the metal square plate.

## Step 7 — Pivoting the Prying Tool



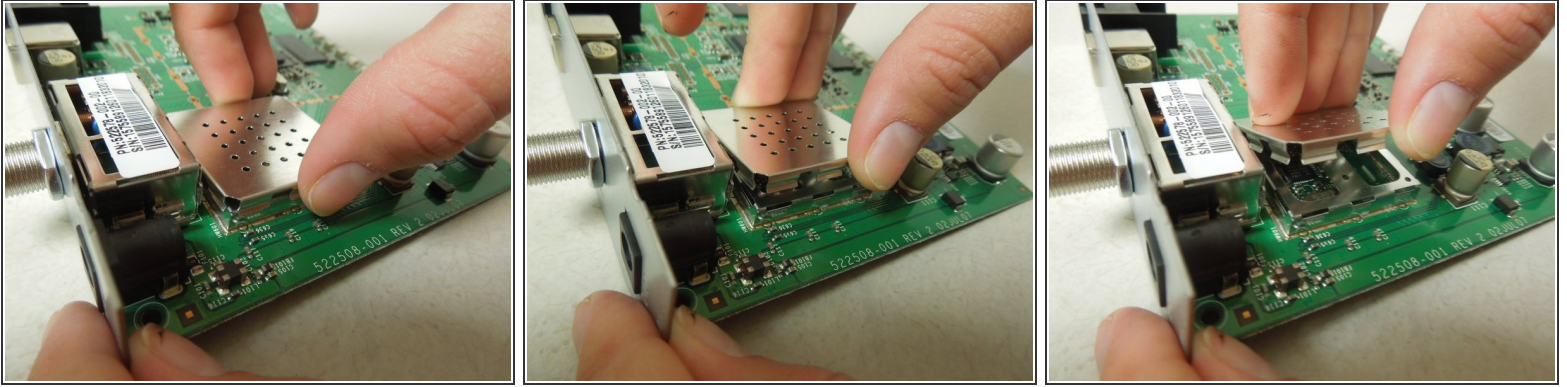
- Slowly and evenly tilt the prying tool so that the metal plate begins to lift up.

## Step 8 — Lifting Another Corner



- Re-position the prying tool underneath another metal prong on the metal face plate, as described in Step 1.
- Again, gently tilt the prying tool to lift the metal plate.

## Step 9 — Lifting the Metal Plate from the Motherboard



- Remove the prying tool and set aside.
- Using one hand, gently grab the sides of the metal plate and lift away from the motherboard.
- If the metal plate does not remove easily, tilt it as you lift the metal plate. If the metal plate is still attached, use the prying tool to detach more metal prongs.

To replace the metal plate, position it over the metal frame and gently press it down until it clicks into place.