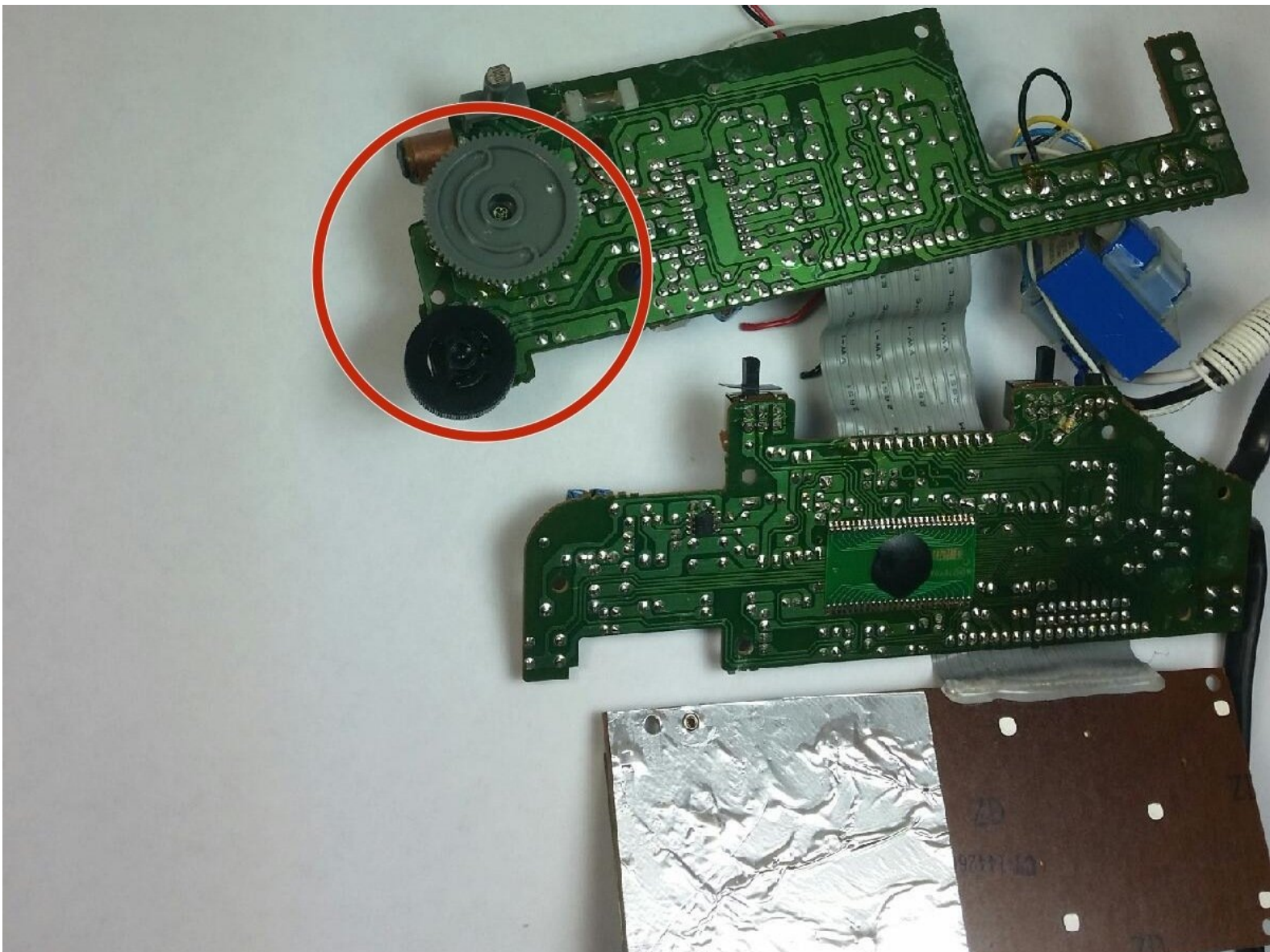




RCA RP3715A Tuning Wheel Replacement

The guide provides step-by-step guide on how to replace tuning wheel.

Written By: Alexander Trowell



INTRODUCTION

Using this guide you will be able to replace the tuning wheel. If the radio station doesn't change you might have a problem with the motherboard.



TOOLS:

- [Phillips #000 Screwdriver](#) (1)
 - [Spudger](#) (1)
-

Step 1 — Reaching the battery terminal.



- Push down on the clip to release pressure. The pull off the plastic cover.

Step 2 — Replacing the battery



- Remove the 9-volt battery from the battery terminal.

Step 3 — Getting inside the device.



- Take out the six screws located on the back of the device.
- The red screws are 10 mm Phillip's #1. The orange screws are 13 mm Phillips #1.
- Three screws are located on the back panel. One is located inside the battery carriage.
- Two screws are located on the on the back panel on the bottom left and right side.

Step 4 — Relieve extension cord tension.



- Remove the 10 mm Phillip's #1 screw.
- Then remove the metal reinforcement.

Step 5



- Using flathead screwdriver undo the release tabs.

Step 6



- Pry the release tabs with a spudger.
- Start with back of the device on the topside.

Step 7



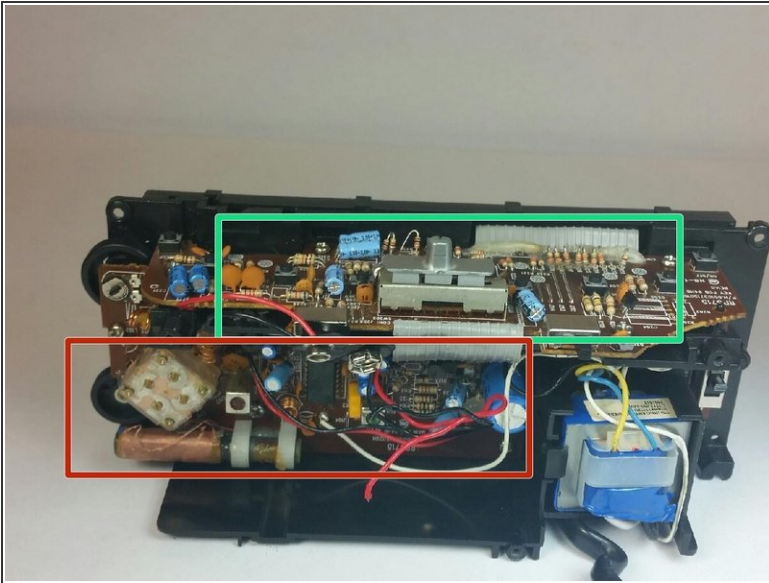
- Pry open both tabs to remove the topside of the clock.

Step 8 — Speaker Replacement



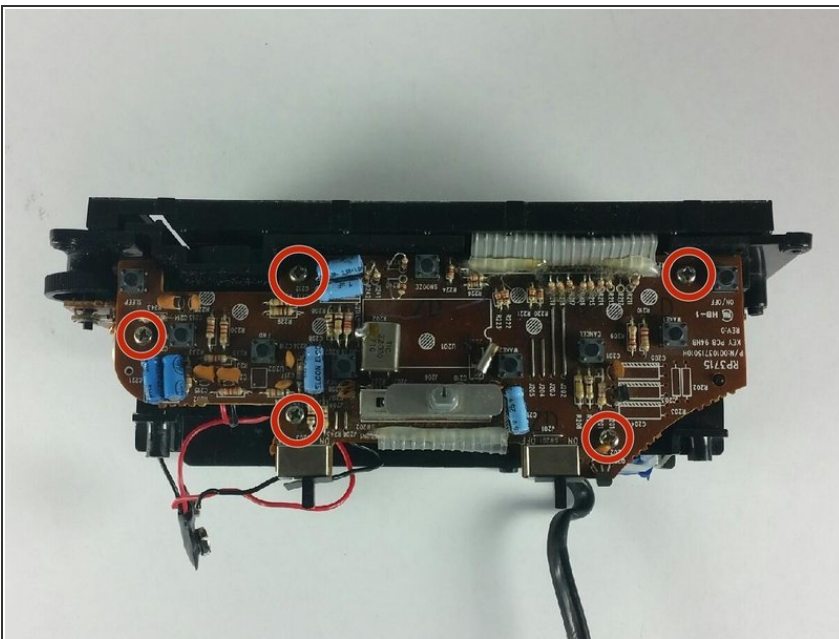
- Remove the two 10mm Phillip's #1 screws. Also remove the two reinforcements holding the speaker in place.

Step 9 — Motherboard



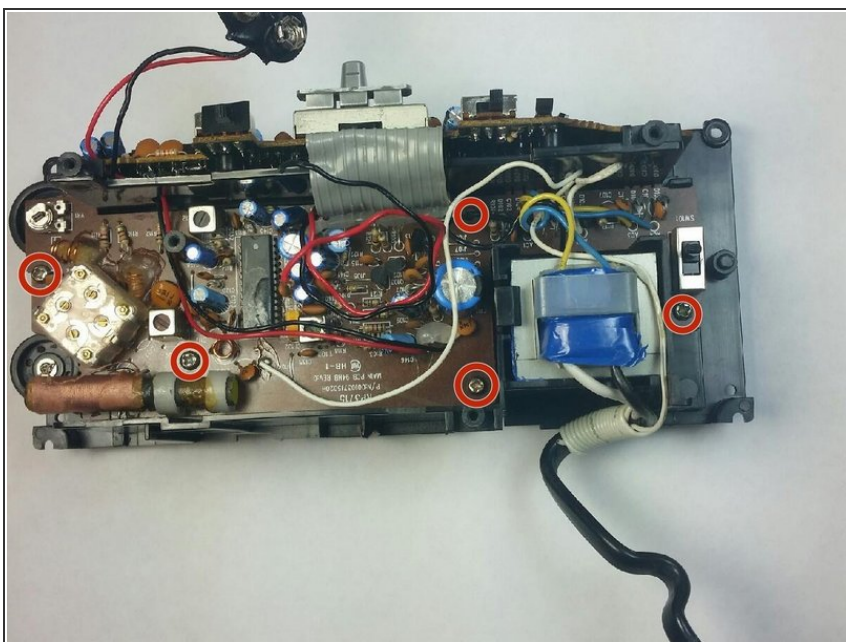
- asd

Step 10 — Removing the top part of motherboard



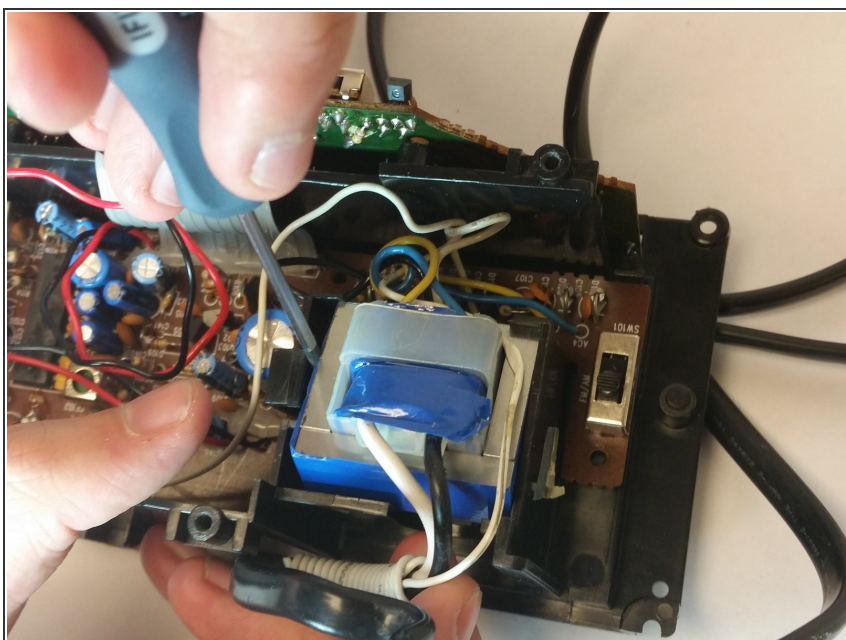
- Remove the top 5 10mm Phillips #1 screws holding the top part of the motherboard

Step 11 — Removing the side part of motherboard



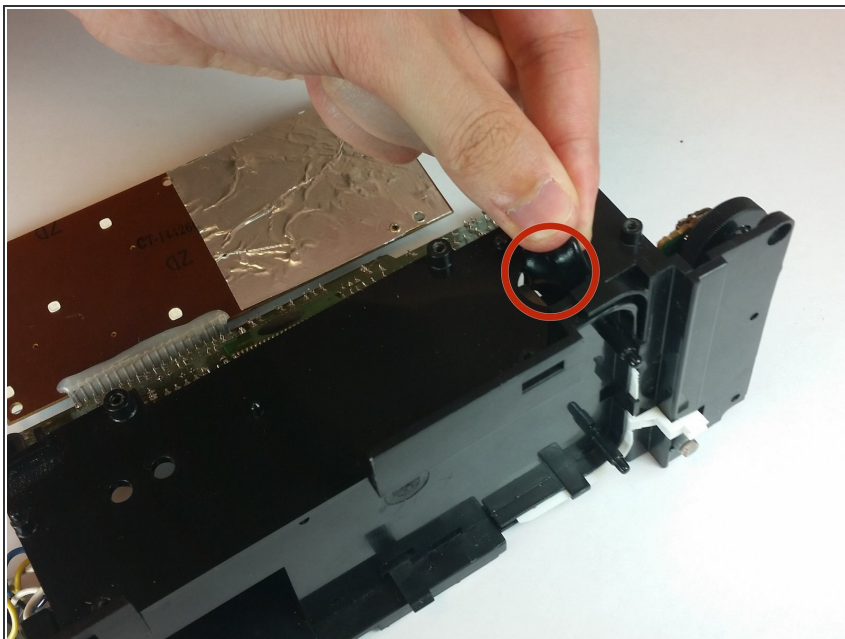
- Remove the 5 10mm Phillip's #1 screws that holding side part of the motherboard

Step 12



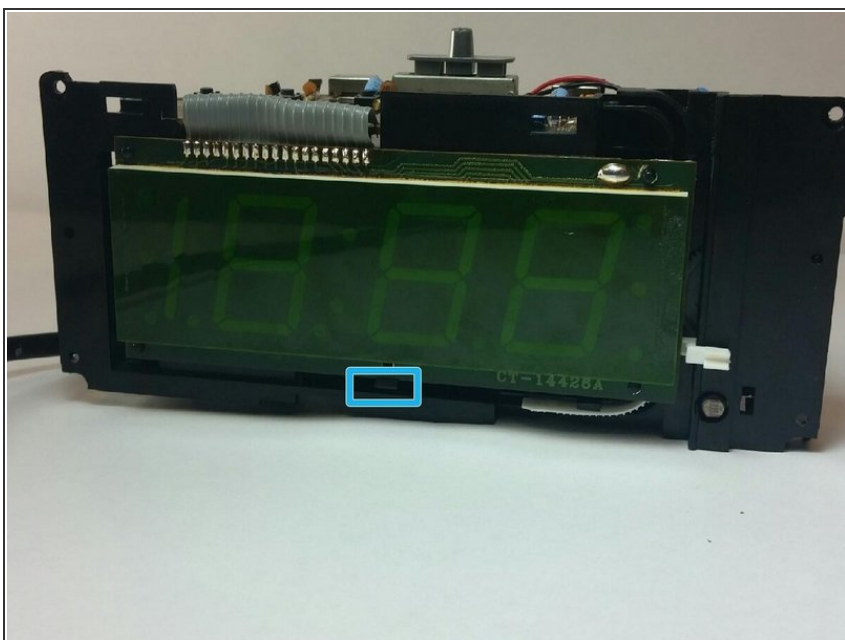
- Remove the transformer by pulling back the release tab shown.

Step 13



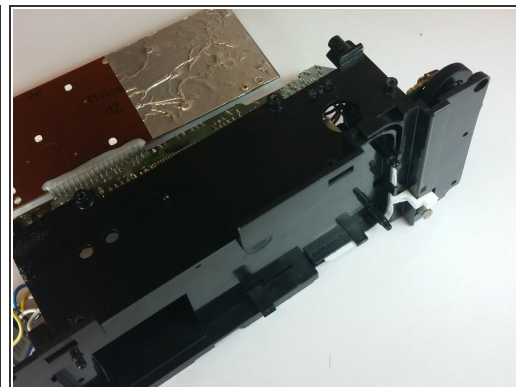
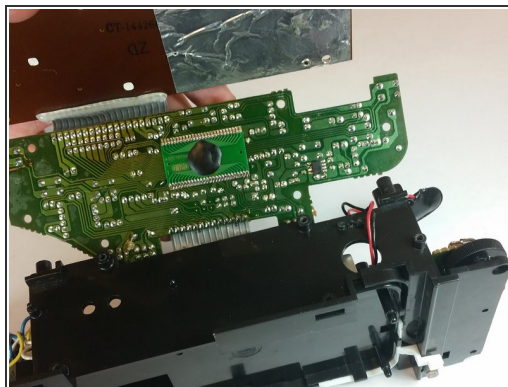
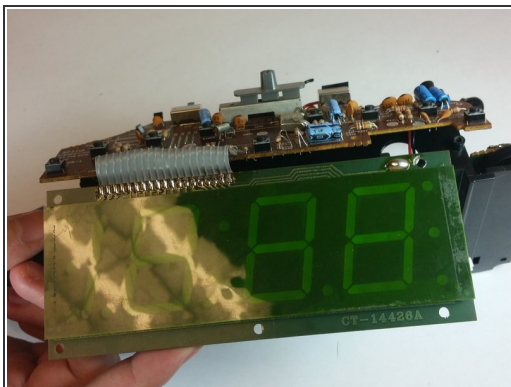
- Pull the battery terminal through the whole shown.

Step 14 — Lift the digital screen



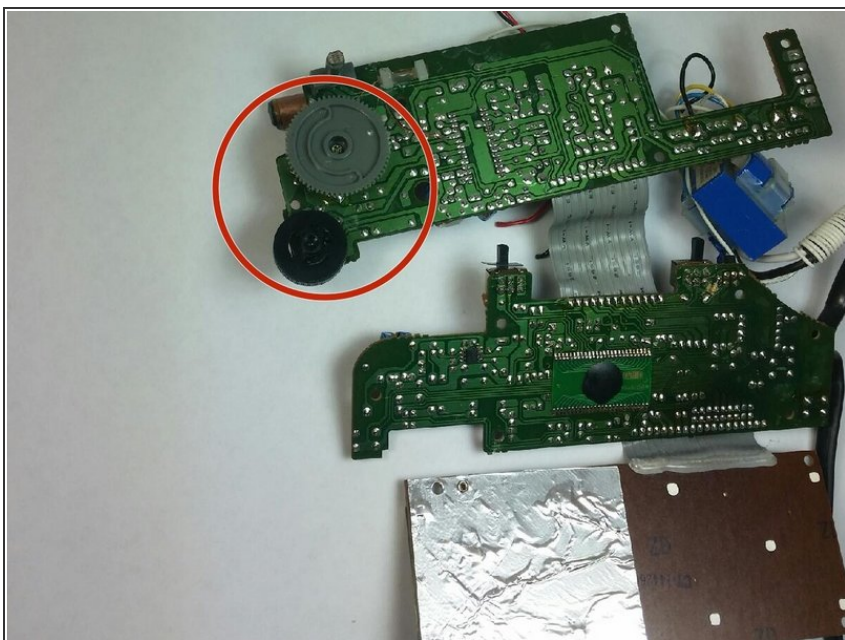
- First release the latch highlighted in the picture. Then grab the screen by the bottom and lift it up.

Step 15 — Lift the top piece of motherboard



- Remove the motherboard from the frame using the illustration shown.

Step 16 — Replacing the tuning wheel



- Tuning wheel, lift it up and replace it with a new one.

To reassemble your device, follow these instructions in reverse order.