



# Acer S200HL LCD Monitor ZIF Connector Replacement

The ZIF connector is an important electronic...

Written By: Jeffrey Kong



# INTRODUCTION

The ZIF connector is an important electronic connection between the motherboard and the monitor screen.

---

## TOOLS:

[Phillips #2 Screwdriver](#) (1)

[iFixit Opening Tool](#) (1)

[5mm Hex Screwdriver](#) (1)

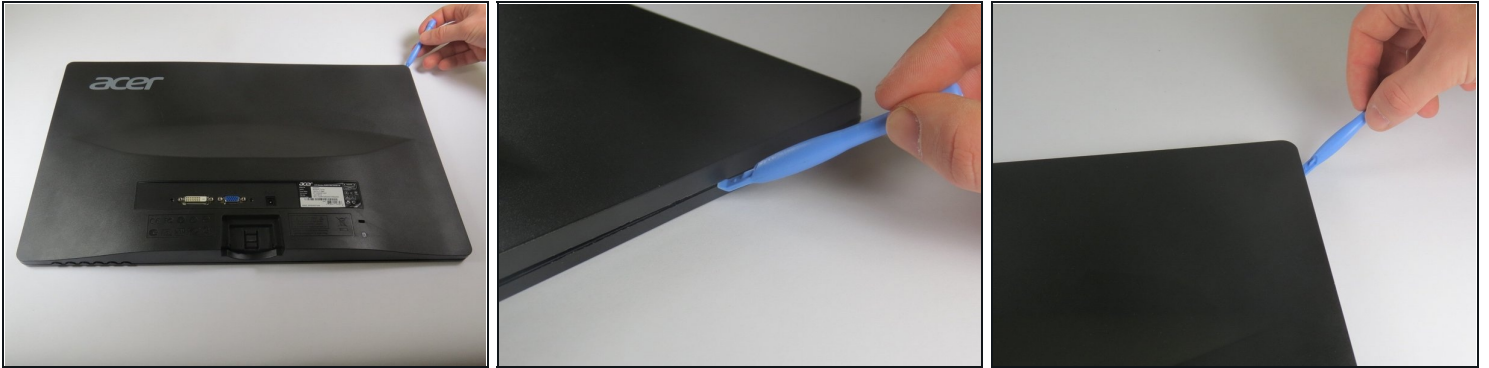
---

## Step 1 — ZIF Connector



- Place the monitor screen face down.
- Firmly hold the base of the stand with one hand and the bottom of the monitor with the other hand.
- Pull the stand away from the monitor.

## Step 2



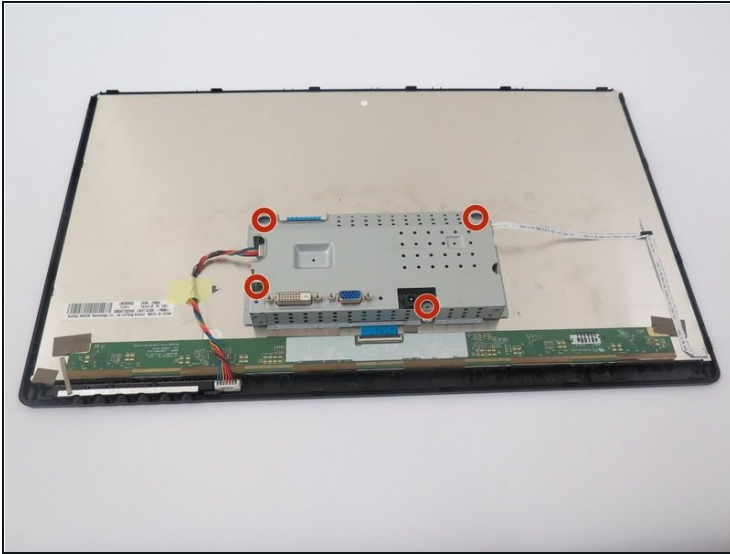
- Use the plastic opening tool to pry the back panel from the front panel.
- Start at one point of the gap and pry along the entire monitor to release the clips holding the monitor together.
  - ① There are four clips on both the left and right sides and five clips on the top and bottom.

## Step 3



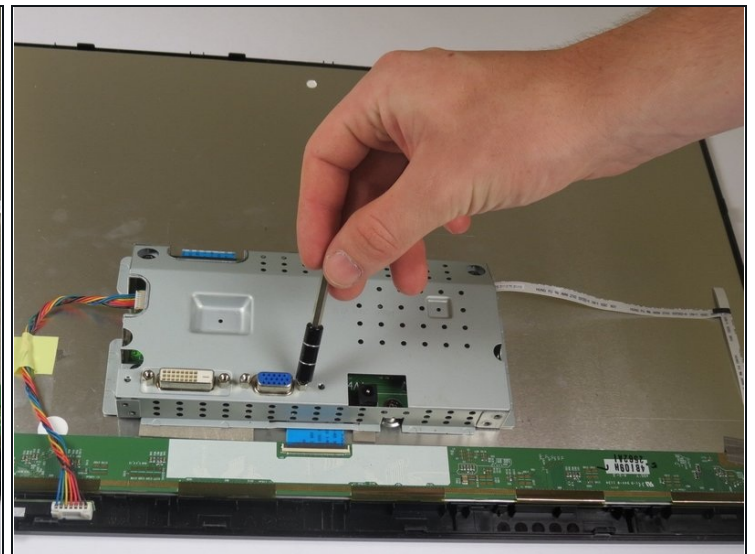
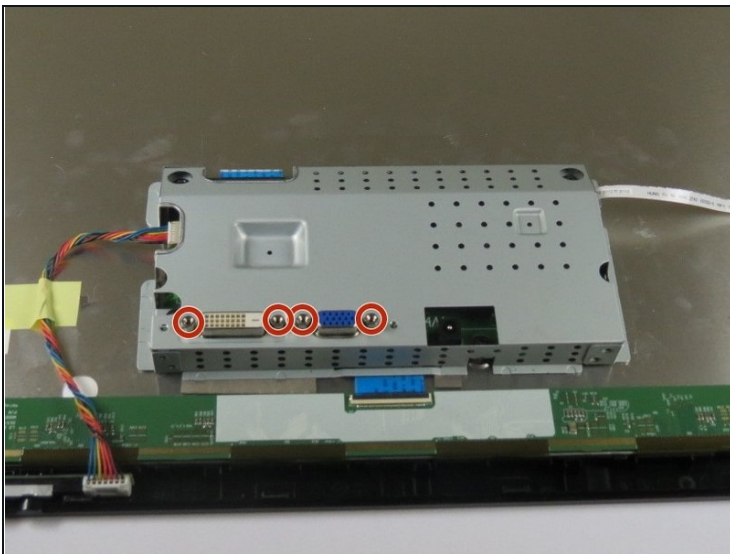
- Gently lift the back panel away from the monitor.

## Step 4



- Unscrew the four 7.5 mm Phillips #2 screws connecting the motherboard to the metal casing.  
⚠ Be sure to keep track of where you place your screws. A [magnetic mat](#) is great for keeping your screws in one spot.

## Step 5



- Remove the four 10 mm Hex screws.

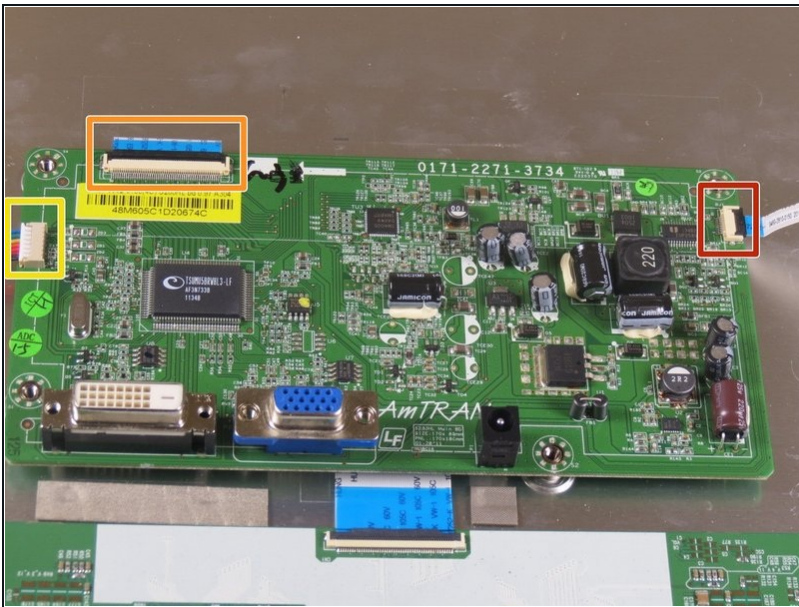


## Step 6



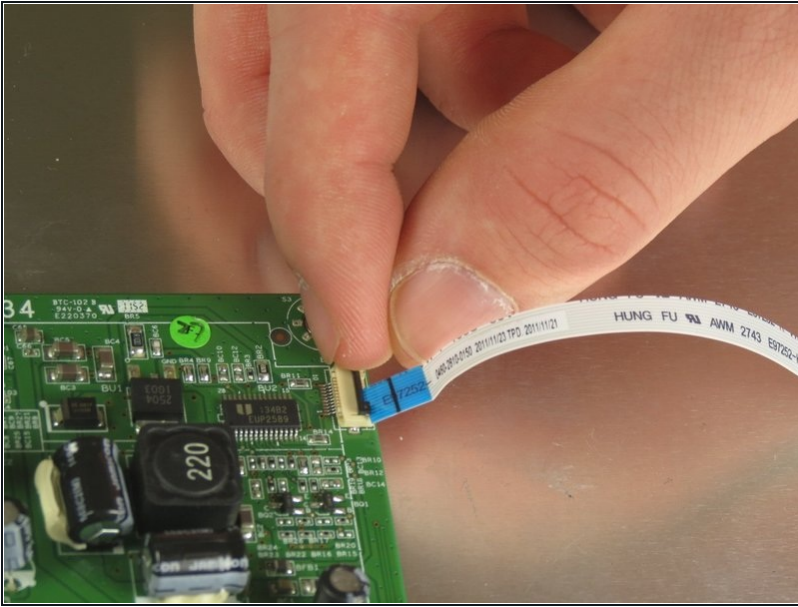
- Gently lift the motherboard casing from the monitor.

## Step 7



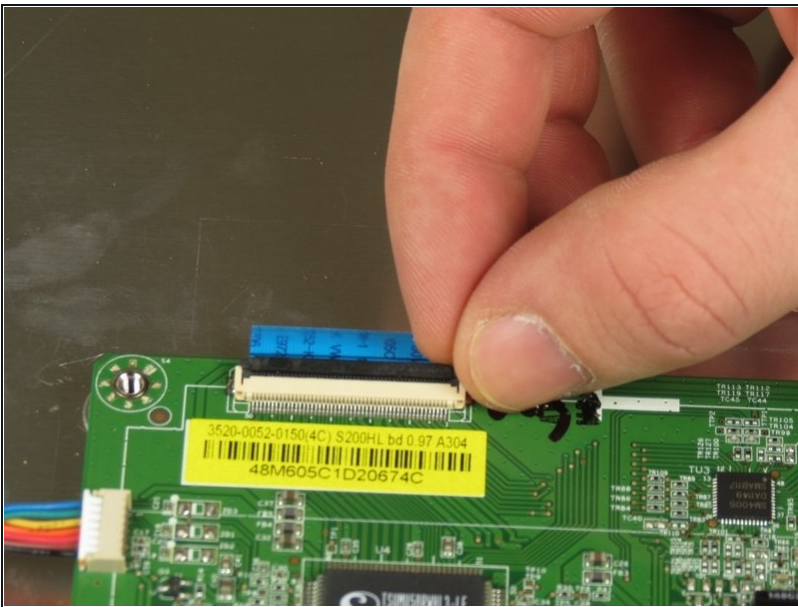
- The following steps give instructions for removing the three connectors shown in the picture.
  - No Fuse Ribbon Cable
  - ZIF Connectors
  - Bundled Cable Connector

## Step 8



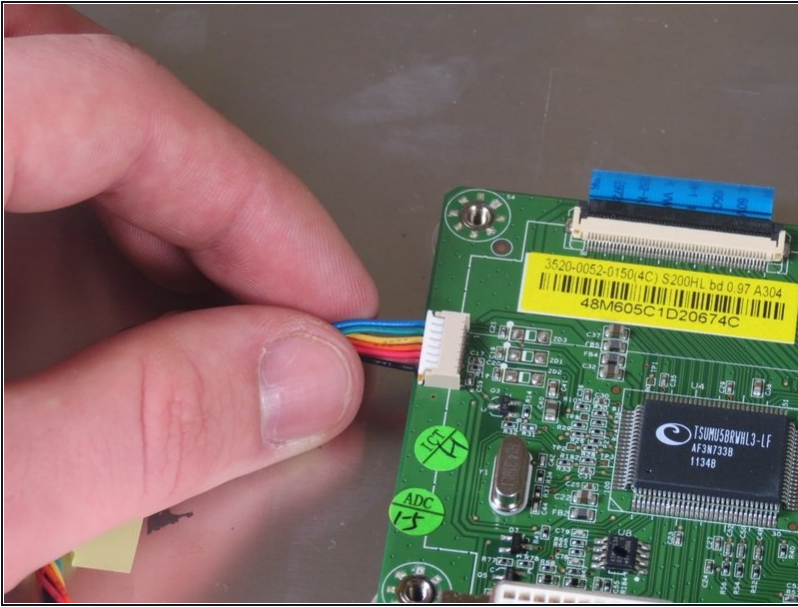
- Lift the black seal to release the small ribbon connector (the No Fuss Ribbon Cable connector) from the motherboard.
- ① The connector will be released from the motherboard immediately.

## Step 9



- Lift the black seal to release the large ribbon connector (the ZIF connector) from the motherboard.
- ① The connector will be released from the motherboard immediately.

## Step 10



- Pull the bundled cable connector gently away from the motherboard.

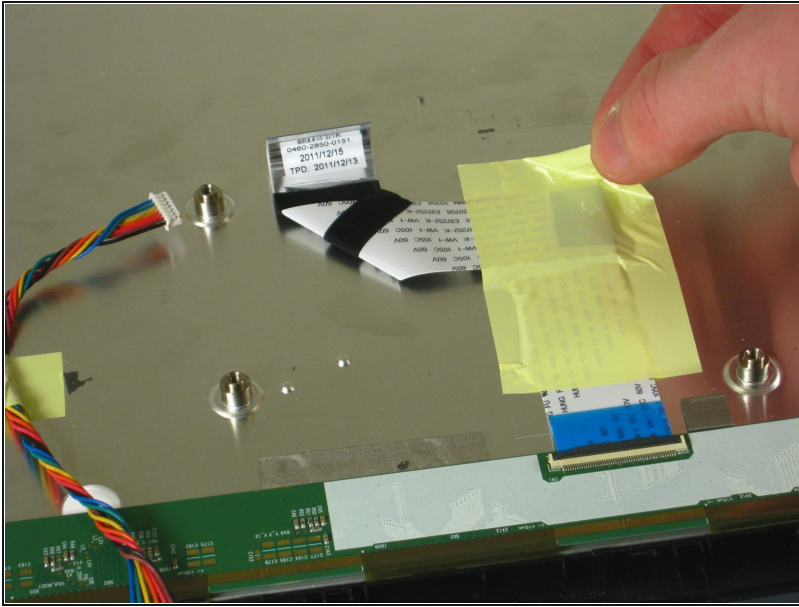
## Step 11



- Gently lift the motherboard to remove it from the monitor.

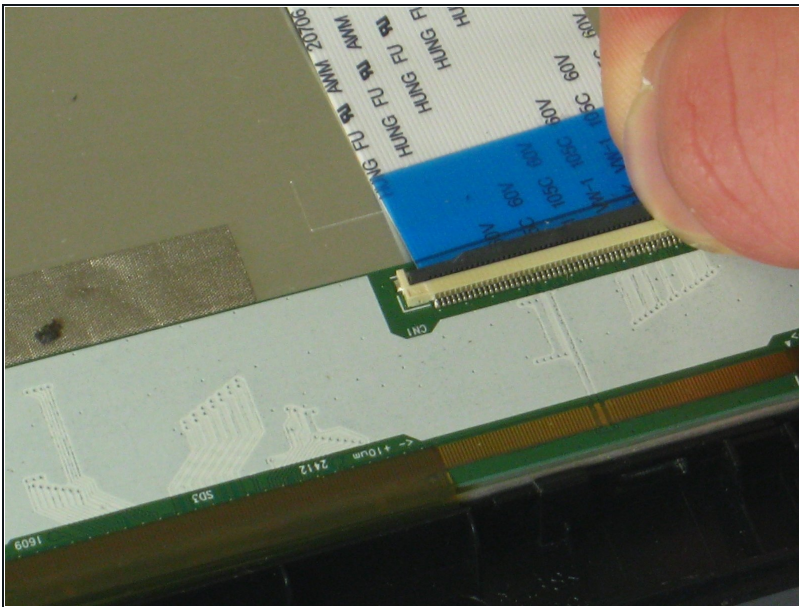


## Step 12



- Slowly pull the tape off of the ZIF connector and the monitor.

## Step 13



- Lift the black seal to release the ZIF connector.
  - ① The connector will be released from the monitor immediately.

To reassemble your device, follow these instructions in reverse order.