



KitchenAid KSB5CR Back Panel Removal

This guide will demonstrate how to properly remove the back panel of the blender.

Written By: Cameron Geehr



INTRODUCTION

The back panel protects the internal components of the blender.

TOOLS:

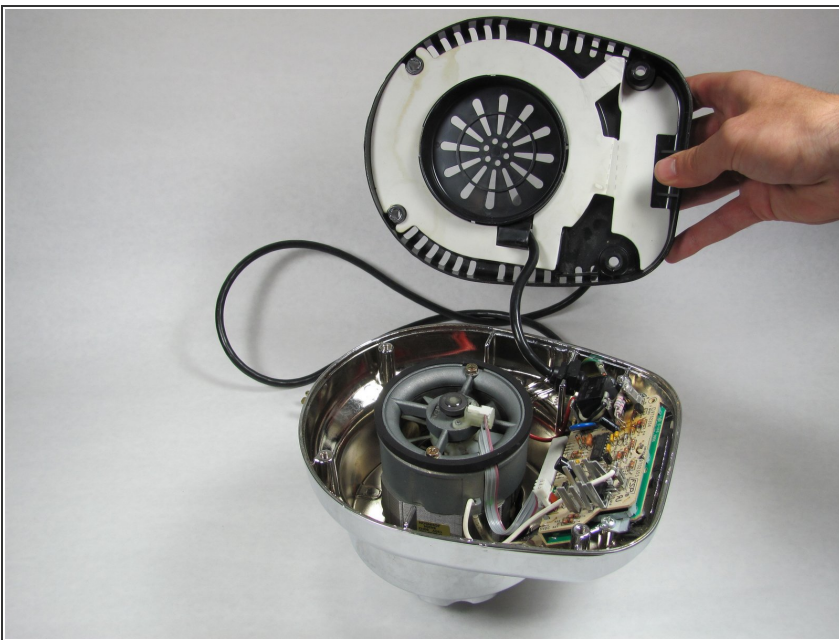
- [Phillips #2 Screwdriver](#) (1)
 - [8" Needle Nose Plier](#) (1)
-

Step 1 — Removing the Back Panel Part 1



- Remove the glass container and place the blender upside down on a solid surface.
- Remove the four rubber feet using the needle nose pliers.
- Remove the four #7.5 Phillips 25mm screws that were located underneath the rubber feet using the Phillips #2 screwdriver.

Step 2 — Removing the Back Panel Part 2



- Lift the back panel up, sliding it along the power cord.

To reassemble your device, follow these instructions in reverse order.