



Dell Inspiron 1420 Keyboard Replacement

This guide will show the reader how to replace the keyboard on the Inspiron 1420.

Written By: Brandon



INTRODUCTION

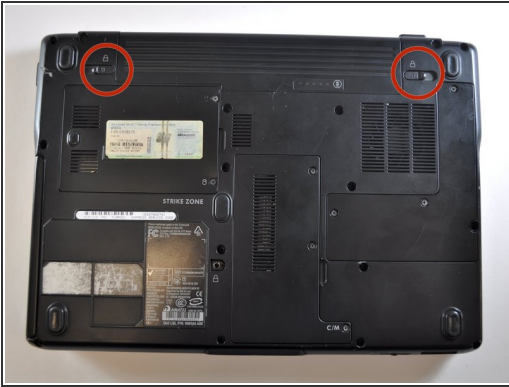
This guide is to replace a broken or faulty keyboard on the Inspiron 1420 laptop.



TOOLS:

- [Spudger](#) (1)
 - [Phillips #00 Screwdriver](#) (1)
-

Step 1 — Battery



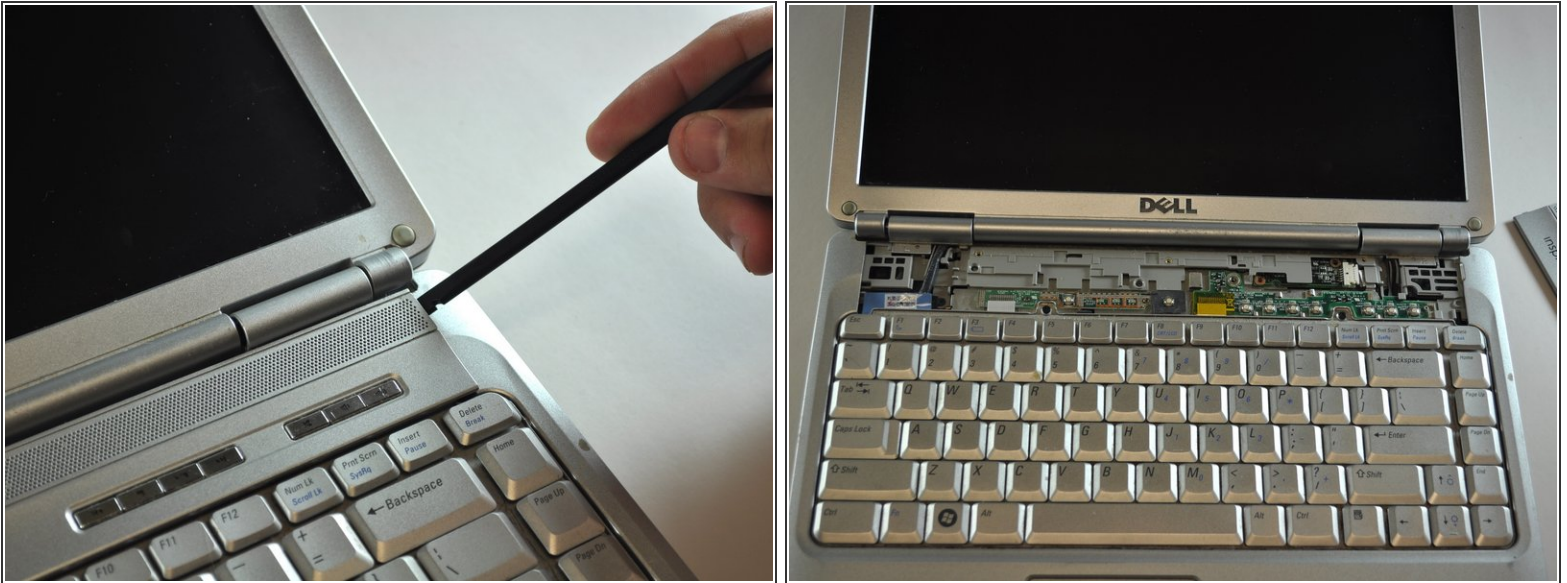
- Slide the two tabs to release the battery.
- Pull the battery out.

Step 2 — Open the laptop



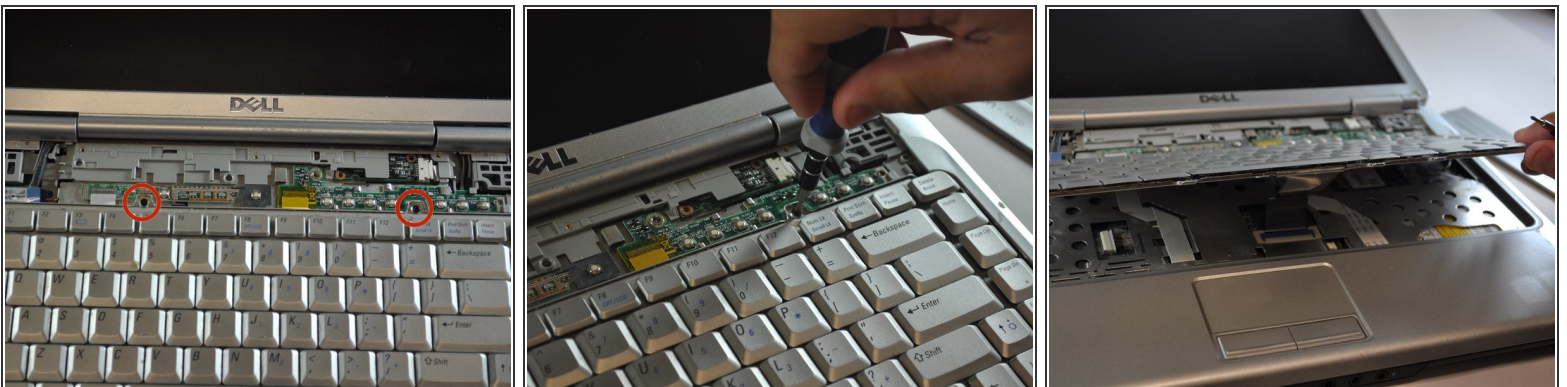
- Open the lid as far back as possible.

Step 3 — Remove top cover plate



- Using a spudger, pry off the top cover plate, thus exposing the screws for the keyboard.

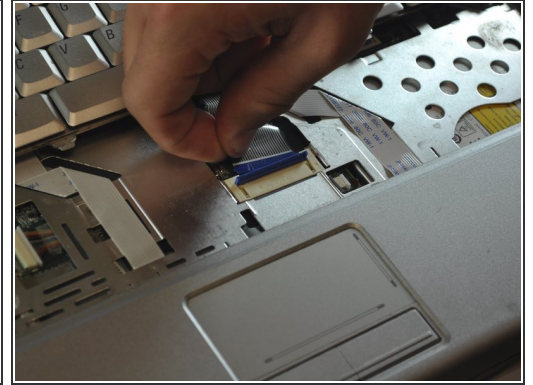
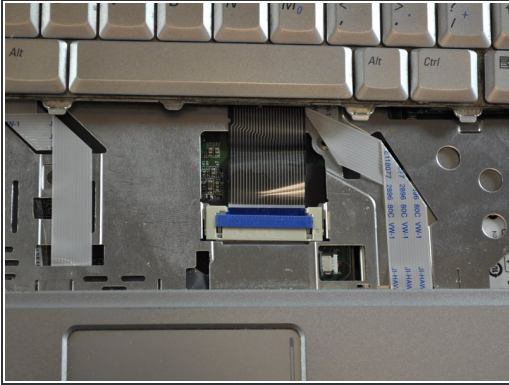
Step 4 — Unscrew keyboard screws



- Using a Phillips #00 screwdriver, unscrew the two 3mm screws holding the keyboard down.

⚠ When removing the keyboard, be cautious not to damage the connecting ribbon underneath.

Step 5 — Remove keyboard



- Using a spudger, carefully lift the blue tab, releasing the ribbon connector and freeing the keyboard to be removed.

To reassemble your device, follow these instructions in reverse order.