



Toshiba Satellite M35X-S114 Hard Drive Replacement

This guide will show you the steps involved in removing the hard drive from the laptop. This process is very simple and can be done very quickly!

Written By: Christian Mayorga



This document was generated on 2020-11-20 12:31:53 PM (MST).

INTRODUCTION

The Hard Drive replacement process involves flipping the laptop over and locating a screw on the right-hand side of the laptop. Once this screw is removed, the hard drive can be separated from the laptop.

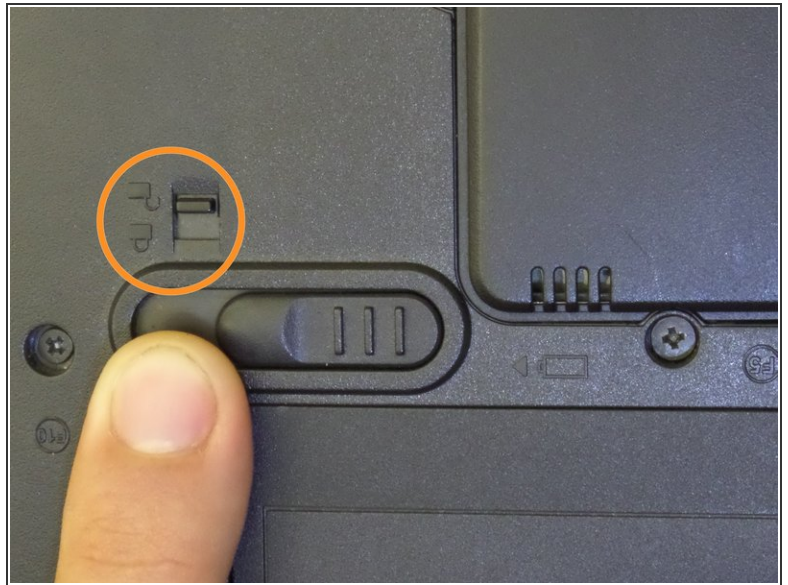
While hard drives can be purchased from most online retailers, you may need to search for a hard drive that is compatible for the laptop's specific model. This is because most laptops use more compact and specifically designed hard drives to fit their smaller overall size.



TOOLS:

- [Phillips #00 Screwdriver](#) (1)
-

Step 1 — Unlock the Battery from its Compartment



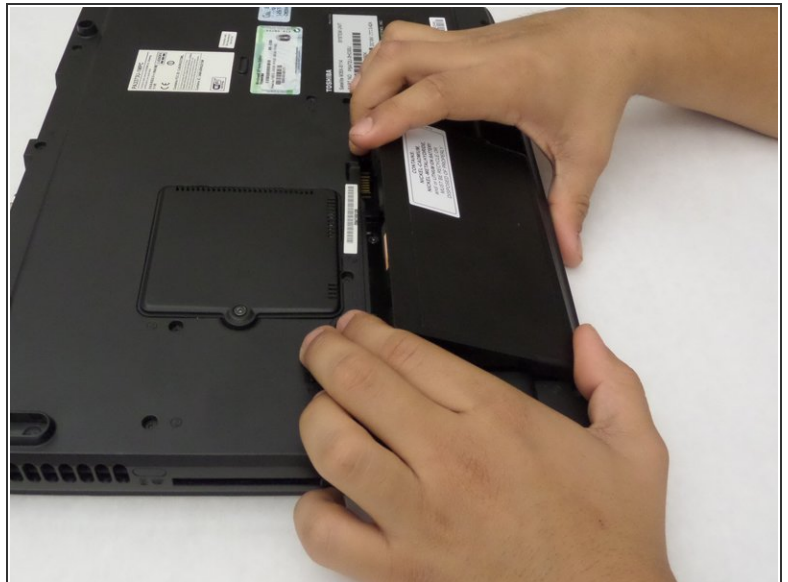
- Locate the battery near the bottom left-hand side of the device.
- Locate the two switches above the battery's top left corner.
- Use any finger to move the smaller switch above the battery to the unlock position.
- ⓘ A small icon of a padlock will identify the "lock" and "unlock" positions of the switch.

Step 2 — Move the Battery's Release Switch



- Use any finger to move the larger switch above the battery to the left and hold the switch.

Step 3 — Remove the Battery



- Place your fingernail or fingertip into the groove near the top right of the battery.
- Pull the battery out with your finger. Release the larger switch once the battery is out.

Step 4 — Remove the Hard Drive screw



- Locate the Hard Drive.
- Locate the screw near the Hard Drive.
- Use a Phillips 00 screwdriver to remove the 7.50mm screw.

Step 5 — Slide the Hard Drive out



i Please note that the hard drive from the laptop used is missing.

- Slide the hard drive out.

! The hard drive may not slide out easily, and may require a little bit of force in order to be disconnected from the laptop.

To reassemble your device, follow these instructions in reverse order.