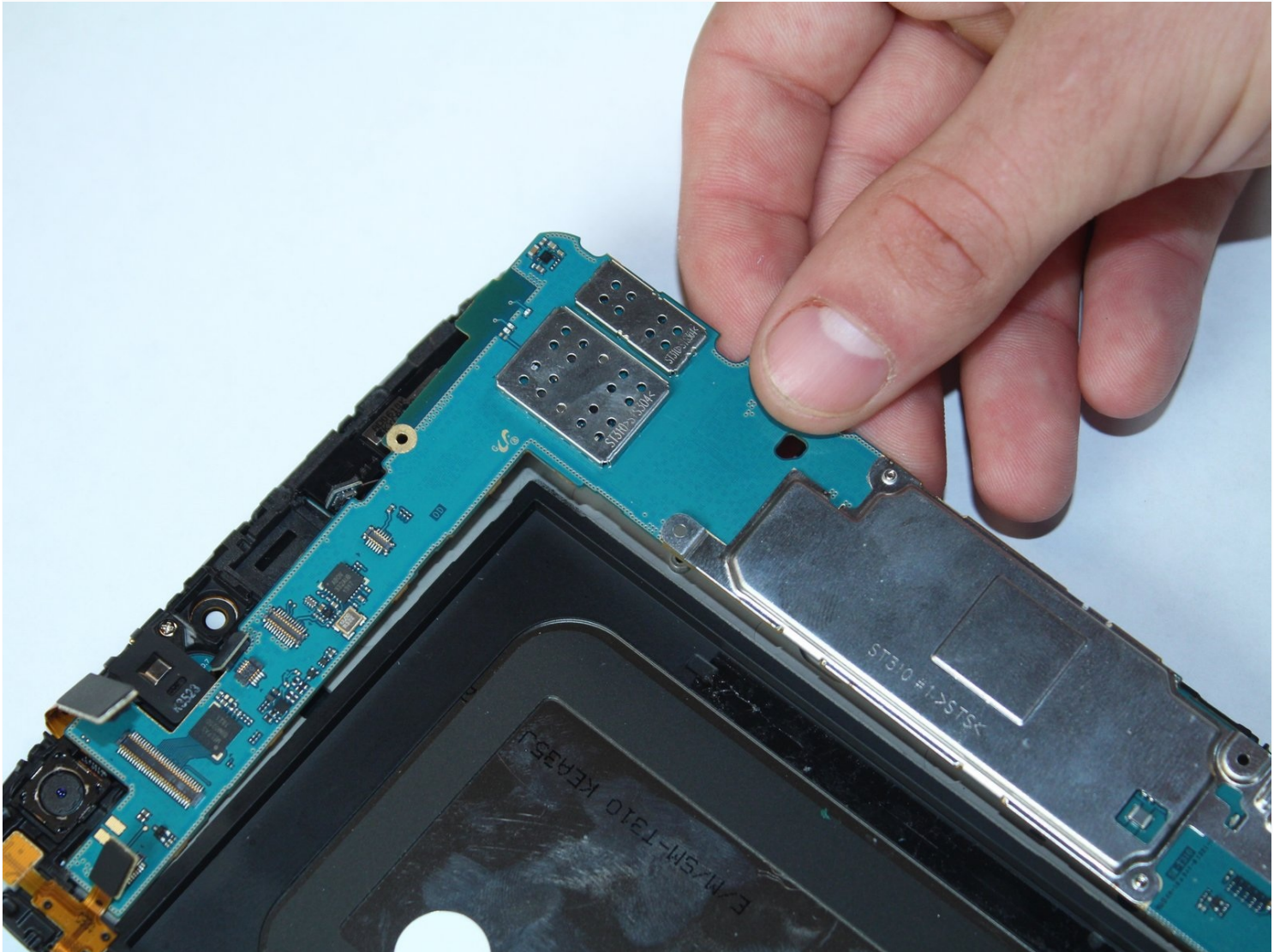




# Samsung Galaxy Tab 3 8.0 Motherboard Replacement

This guide will take you through the...

Written By: Kyle Ballard



# INTRODUCTION

This guide will take you through the step-by-step process of removing and replacing the motherboard of a Samsung Galaxy Tab 3 8.0.

---

## TOOLS:

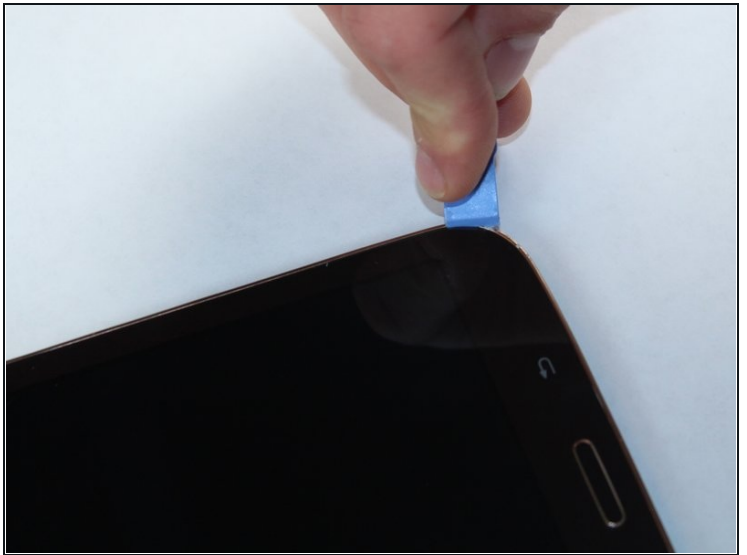
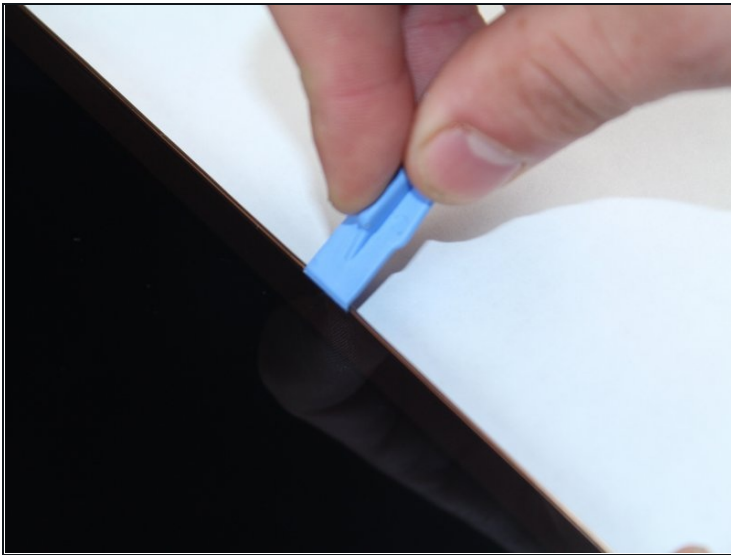
[iFixit Opening Tool](#) (1)  
[Tweezers](#) (1)  
[Phillips #000 Screwdriver](#) (1)

## PARTS:

[Samsung Galaxy Tab 3 8.0](#)  
[Motherboard](#) (1)

---

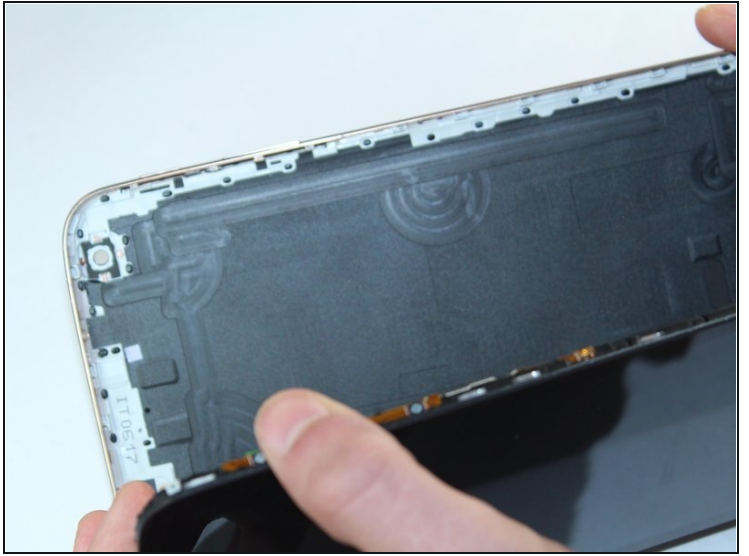
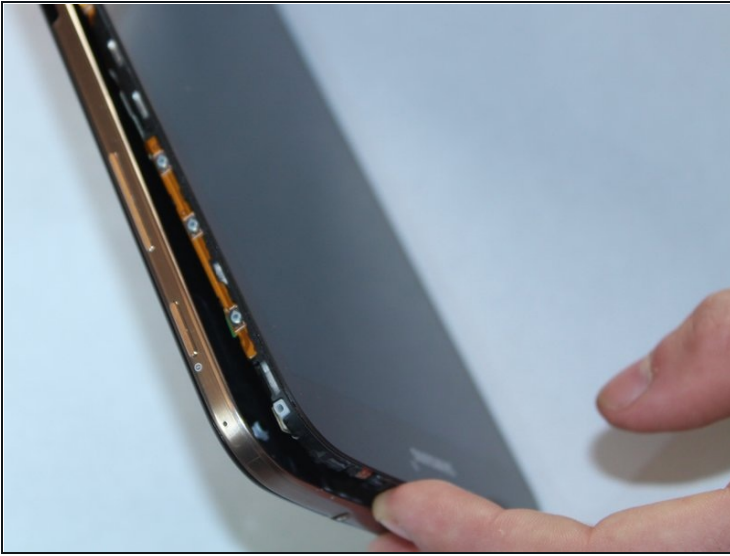
### Step 1 — Battery - Open up the tablet



- Start out by separating the screen from the back cover using the larger plastic opening tool to pry them apart.

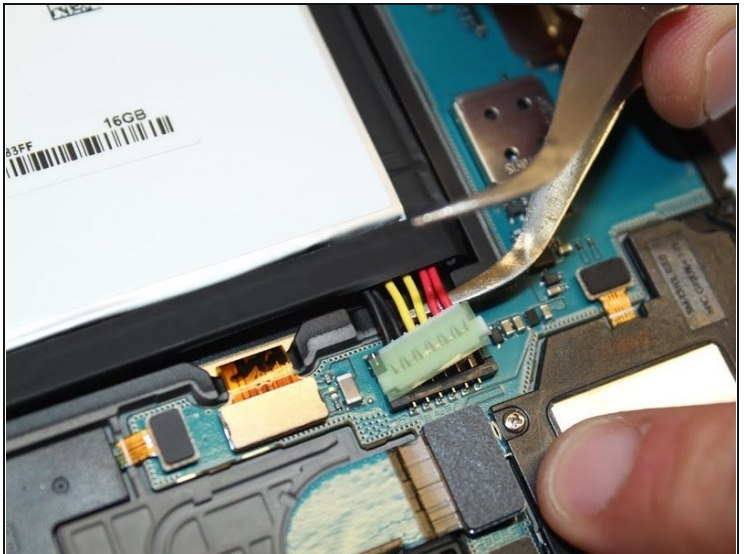
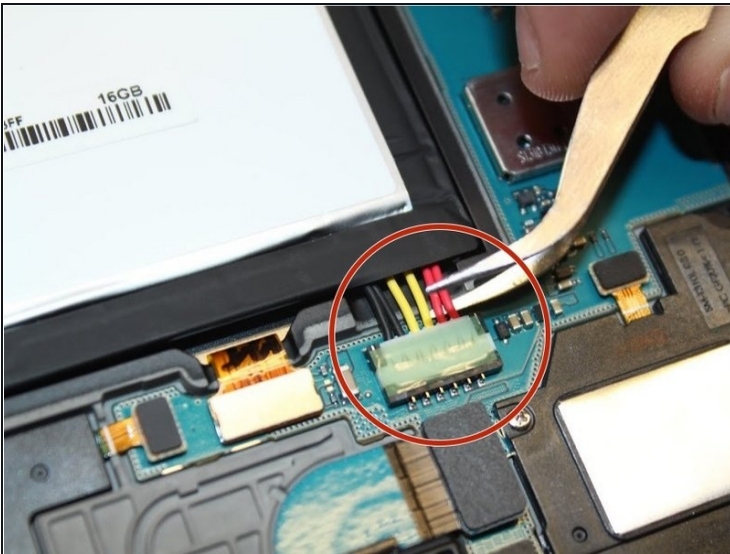
 Be careful when removing the screen as negligence can cause damage.

## Step 2 — Remove Back Cover



- Once every part of the screen is separated from the back cover, you should be able to fully remove it with your hands.

## Step 3 — Disconnect Battery



- To remove the battery you must use something small, such as tweezers, to disconnect the battery from its port.

ⓘ Note: the connection lifts up to remove.

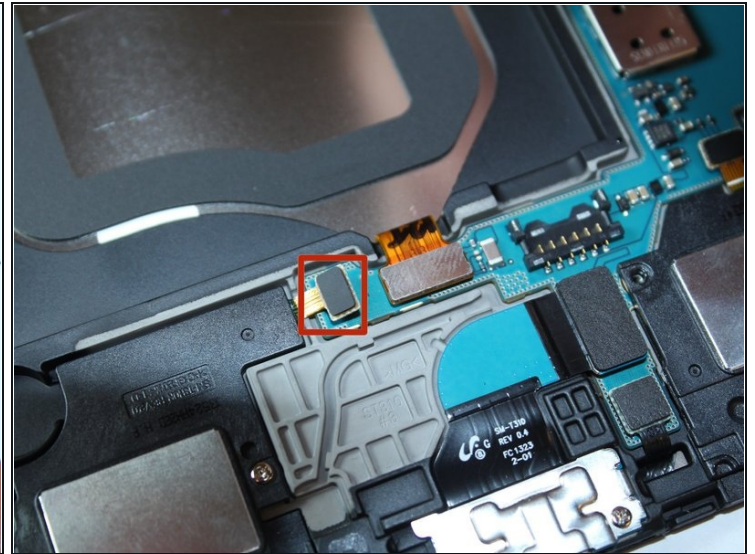
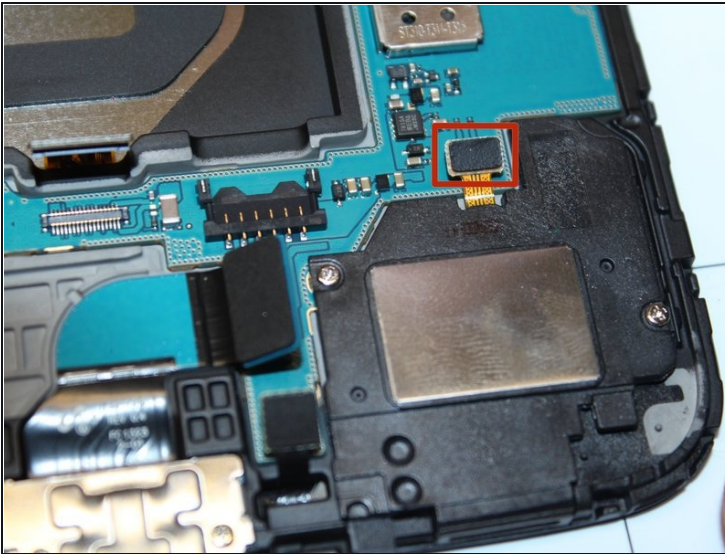


## Step 4 — Remove Battery



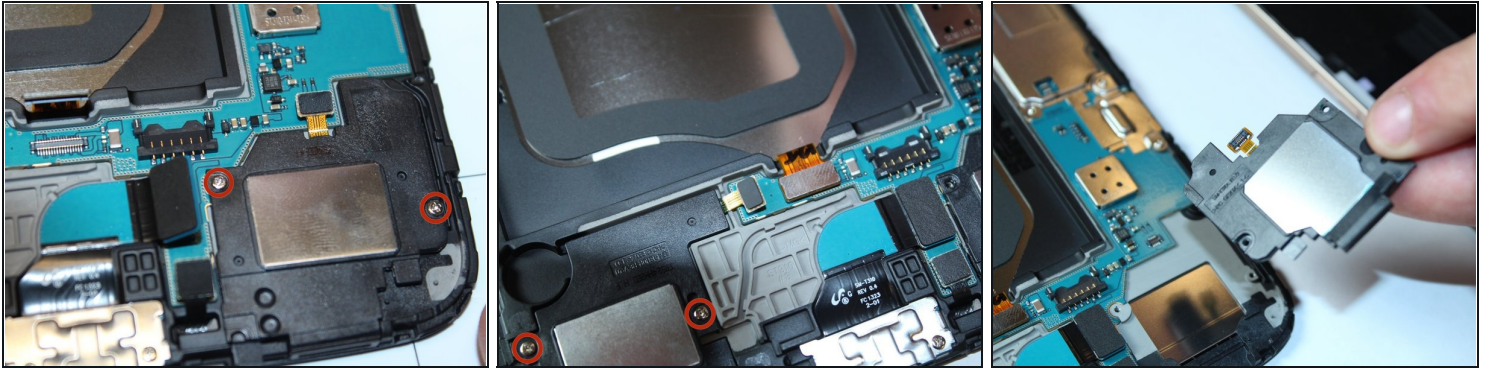
- After the battery is disconnected, use the pulling tab to safely remove the battery.

## Step 5 — Disconnect Speakers



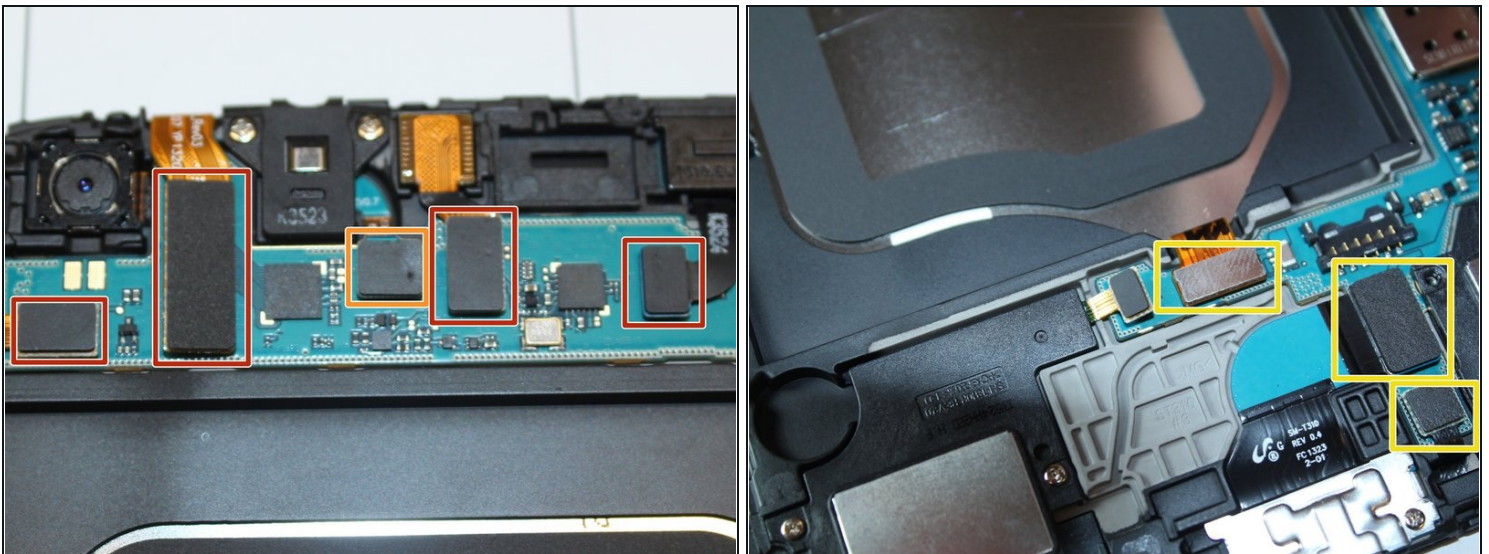
- Disconnect the relays attached to the motherboard.

## Step 6 — Unscrew Speakers



- Unscrew the 2.9mm screws from the speakers using a Phillips head #000 screwdriver, then lift the speakers from the device.

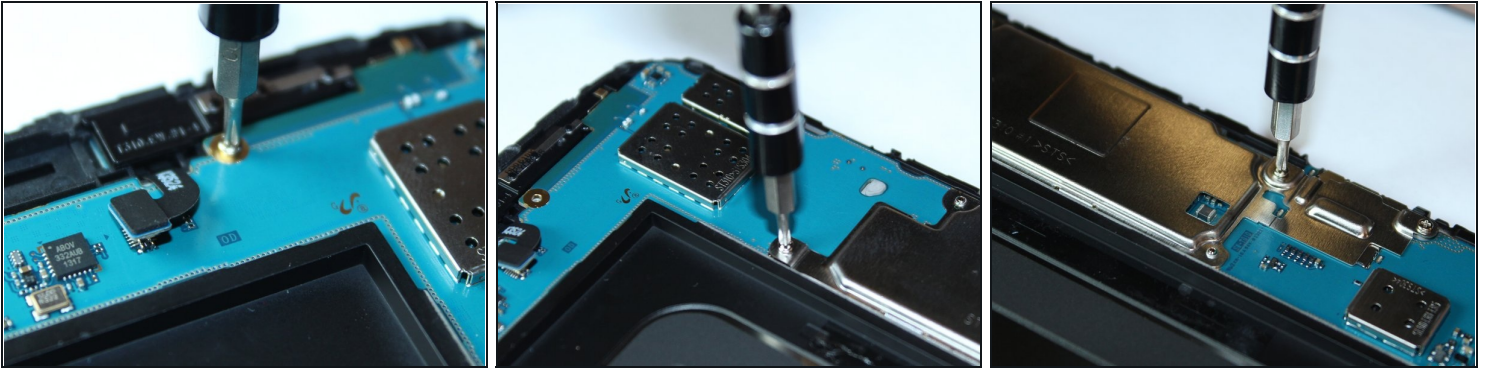
## Step 7 — Disconnect All Relays



- Using the plastic remover tool carefully unseat the four rectangular electric leads from the board. Each rectangle is a different size, the first one is large, the second one is medium, and the last two are small.
- Using the plastic remover tool carefully unseat the square electric lead (marked in orange) from the board.
- Using the plastic remover tool carefully unseat the small square and the two rectangular electric leads (marked in yellow) from the board.

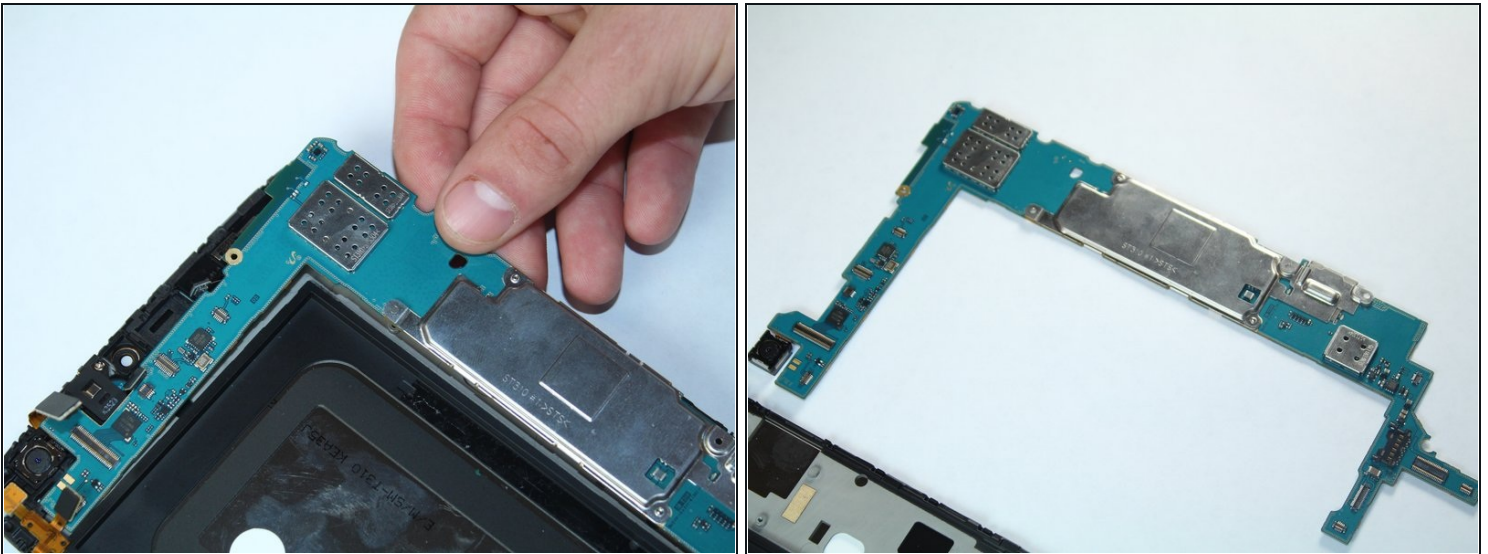


## Step 8 — Unscrew Motherboard



- Unscrew the one 2.9mm Phillips #000 screw above the battery, and the three 2.9mm Phillips #000 screws to the right of the battery.

## Step 9 — Remove the Motherboard



- Carefully lift the board from the device.

To reassemble your device, follow these instructions in reverse order.