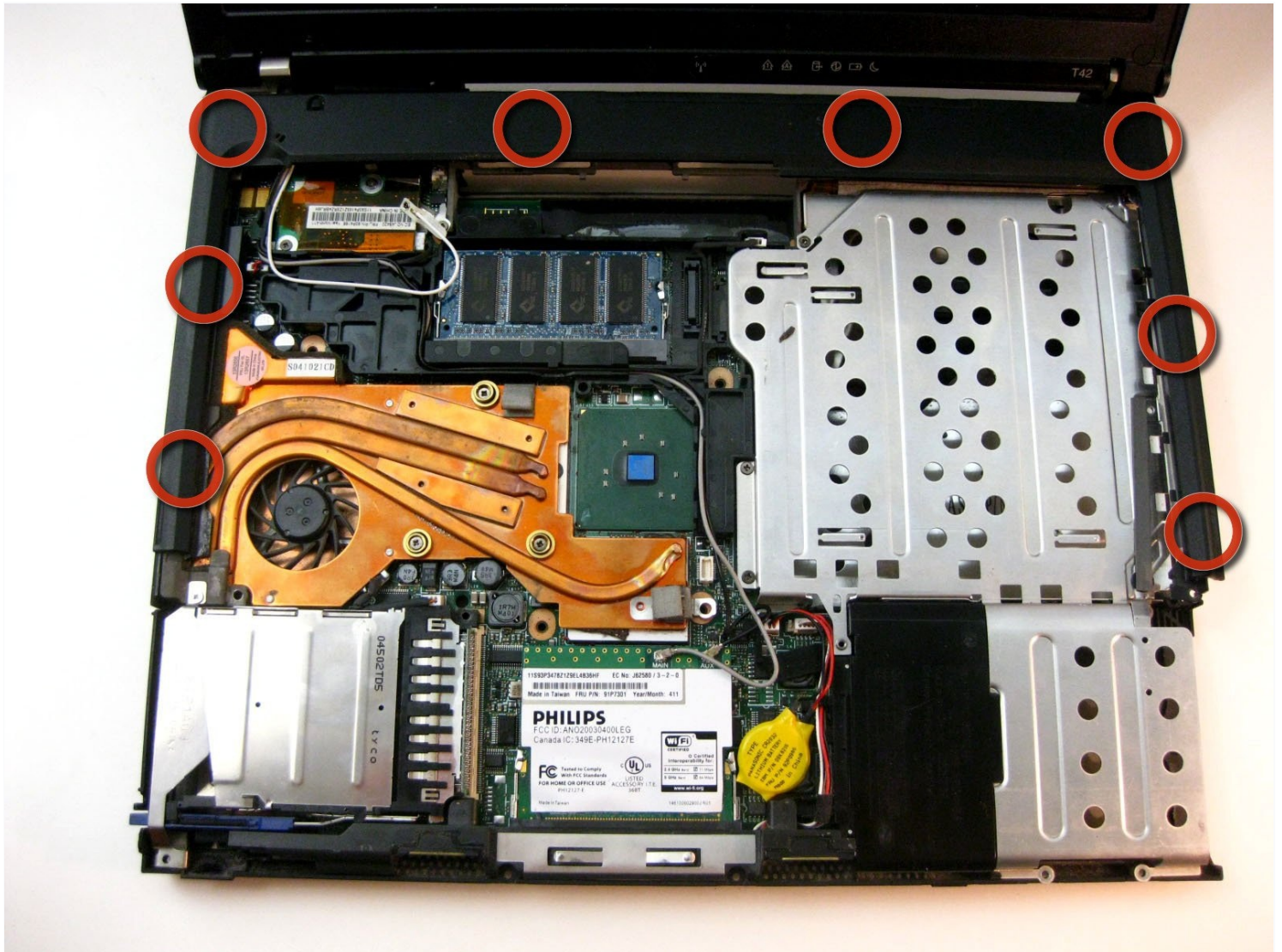




Disassembling IBM ThinkPad T42 Plastic Edge Cover

How to remove the edge cover of the IBM...

Written By: Gerald Watanabe



INTRODUCTION

How to remove the edge cover of the IBM ThinkPad T42 access some of the components of your device.

TOOLS:

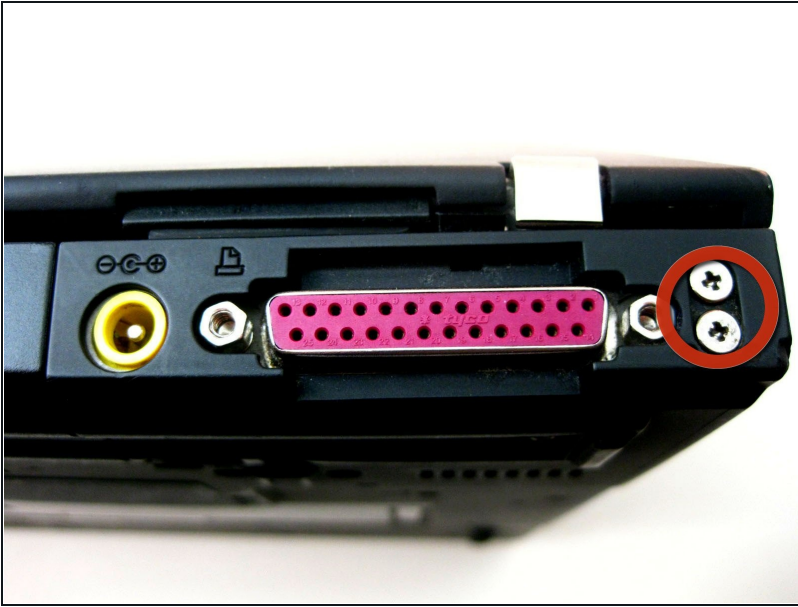
Phillips #0 Screwdriver (1)

Step 1 — Bottom cover



- Using a Phillips #0 screwdriver, identify and unscrew the twenty screws located on the underside of the T42.

Step 2 — Rear screws



- Unscrew the four Phillips screws located on either side of the rear of the T42 (there are two located on each end.)

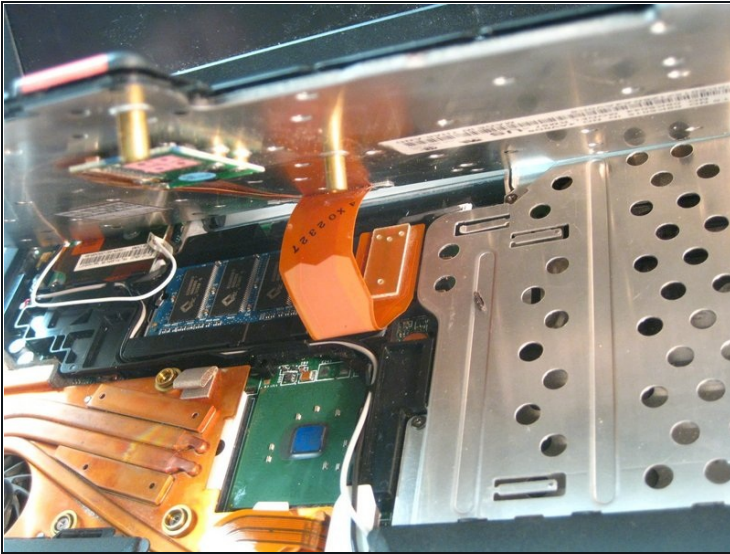
Step 3 — Keyboard and Trackpad



- Flip the laptop over and open the screen to access the keyboard and trackpad.
- ① The keyboard and trackpad are connected to the motherboard. Before removing the keyboard and trackpad, disconnect both components from the motherboard, as shown in the following step.

⚠ The bezel and keyboard will be loose, be careful.

Step 4



- Carefully maneuver the palm rest away from the keyboard, as both the keyboard and palm rest/trackpad will come off together.

⚠ Remember, both the keyboard and trackpad have connectors to the motherboard. Disconnect these before completely removing either component.

Step 5 — Plastic Edge Cover



- Starting from the bottom right, carefully pry off the bezel. Use a spudger or flathead screwdriver if assistance is needed.

To reassemble your device, follow these instructions in reverse order.