



# Pantech Breakout Back Case Replacement

This guide will show you how to remove the back case of the Pantech Breakout.

Written By: Ryan Murphy





## TOOLS:

- [iFixit Opening Tools](#) (1)
- [Phillips #000 Screwdriver](#) (1)

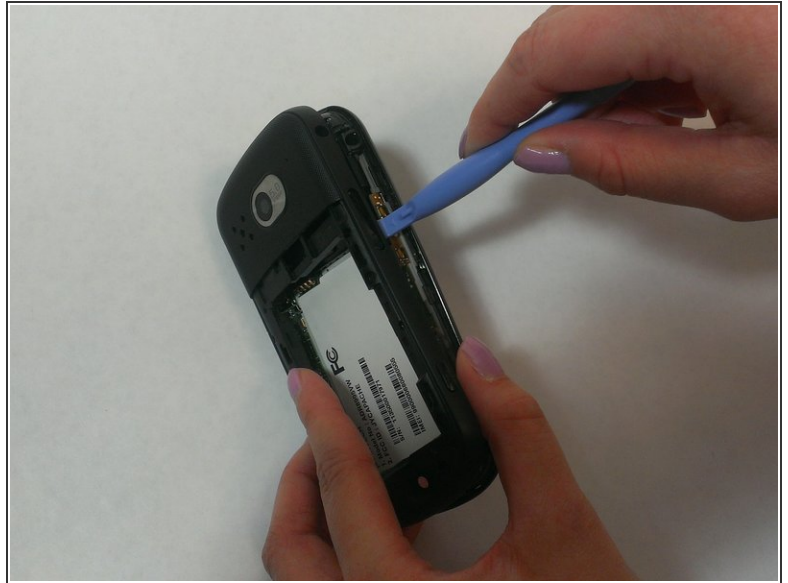
*A Phillips #00 or #000 Screwdriver may be used.*



## Step 1 — Remove Screws



- With the phone face down on a hard surface, locate the six 3.5mm Phillips screws around the perimeter of the phone.
- ⓘ Three of these screws are black, while three are silver.
- Use a Phillips #00 or #000 screwdriver to remove all six Phillips screws.
- ★ Righty Tightly, Lefty Loosey!

## Step 2 — Separating the Back Case



-  Be careful when prying the plastic bezel and back case apart from each other; the parts are connected by both snaps and adhesive. Forcing the back case off could result in it breaking or cracking.
- Slide a Plastic Opening Tool in between the front bezel and the back case, slowly working it around the tight edges.
-  Be patient, it may take several tries to remove the bezel and back case successfully. You may need to slide repeatedly along the edges of the entire phone perimeter to loosen the adhesive between the two pieces.



### Step 3 — Removing Back Case



- Starting at the charging port cover open by prying away from front face to remove back case.
- ⓘ Make sure that no part of the back case is caught on any other part of the phone; the USB charging port can get in the way.
- After removing the bevel and back case of the phone, you will now see the motherboard and other internal components.

## Step 4 — Component Board Separation



- After removal of front bezel and back cover, locate and remove two Phillips #000 screws from the top corners of the phone.
- After taking out the screws, lift off the black plastic piece containing the speaker, Micro SD card slot and SIM card slot.

To reassemble your device, follow these instructions in reverse order.