



Toshiba Satellite A215-S7425 Hard Drive Replacement

Written By: Marianne

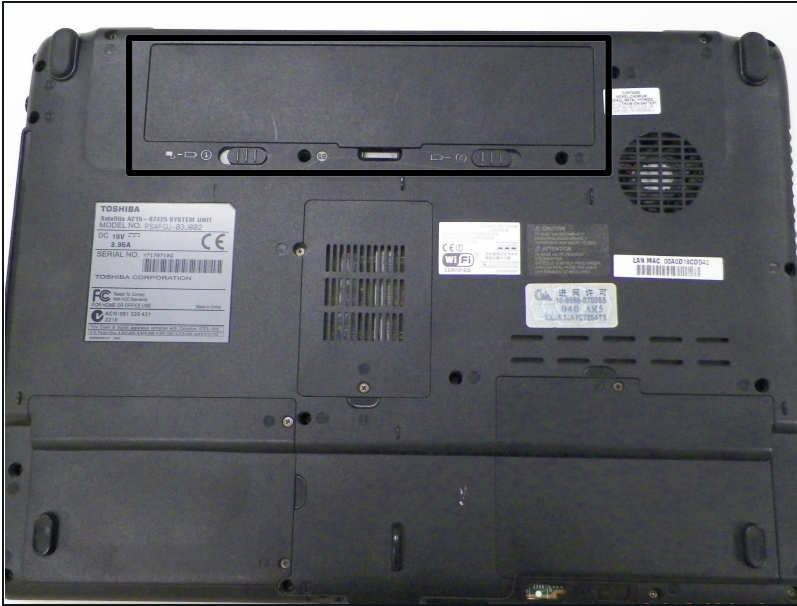


TOOLS:

Phillips #1 Screwdriver (1)

Anti-Static Wrist Strap (1)

Step 1 — Battery

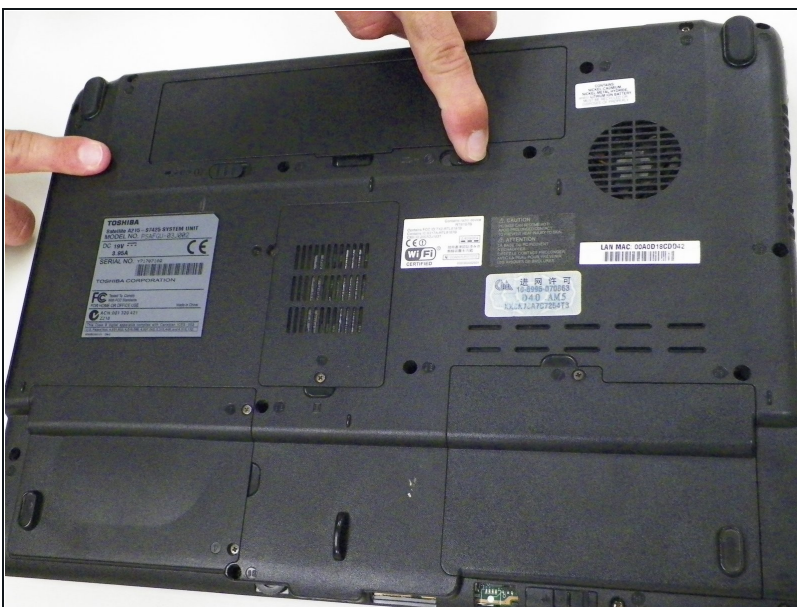



- Turn off the computer.
- Disconnect the charging cable from computer.

 **Failure to unplug the cable could result in electric shock.**

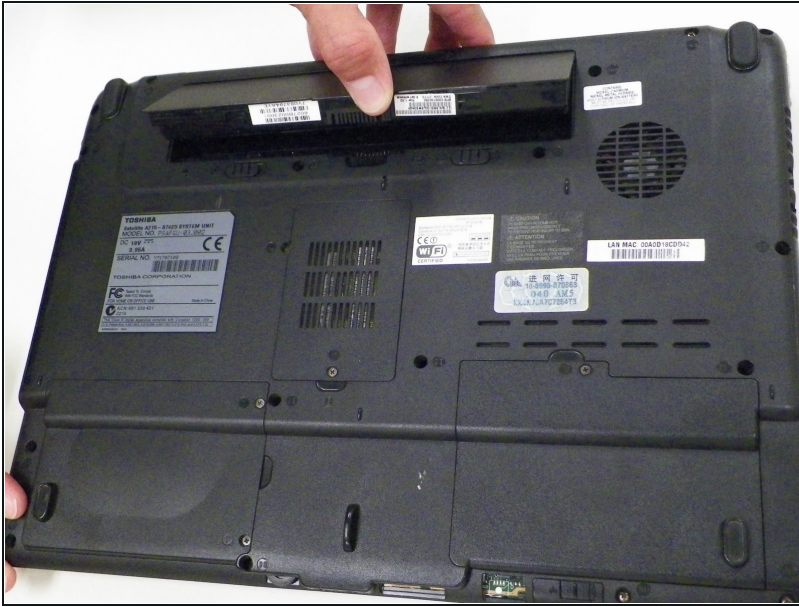
- Flip the computer upside down.

Step 2



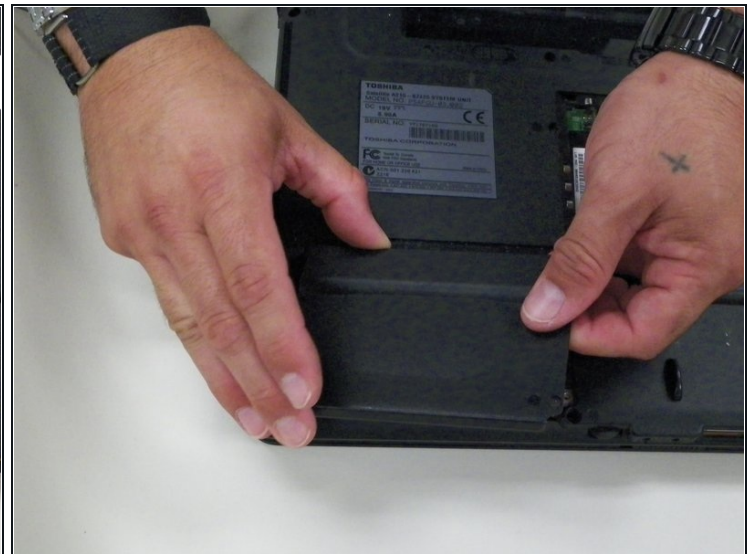
- Slide latches labeled #1 and #2, located outside the battery cover, away from each other.
-  Latch #1 will click over and stay while latch #2 will have to be held for battery to release.

Step 3



- Gently lift and pull the battery out of the device.

Step 4 — Hard Drive



- Locate hard drive cover opposite the battery on the lower left corner of the device.
- Loosen 2 Phillips 4.2 mm size captive screws from cover.
- Lift cover slightly from the edge where the screws are and pull slowly out and to the right, releasing it from its latches on the left.

Step 5

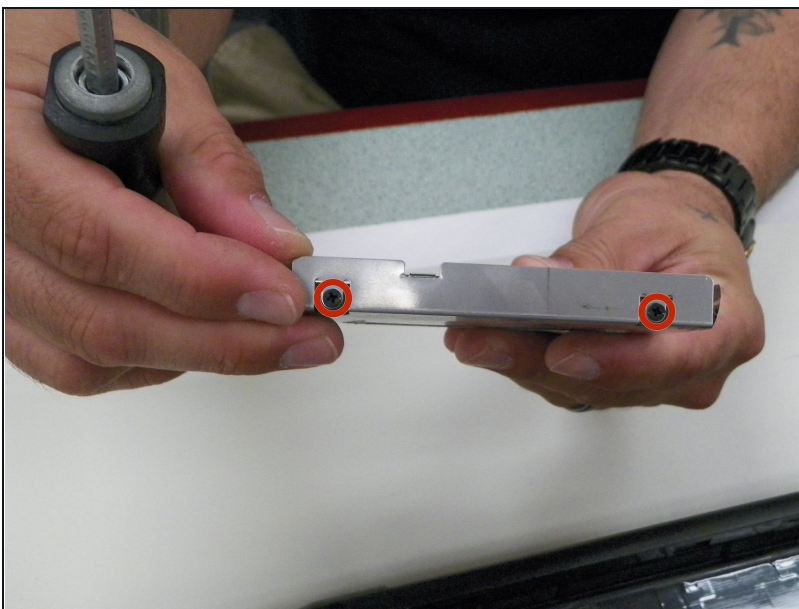


- Locate the thin plastic tab folded on right side of hard drive case.
- Hold plastic tab and gently pull tab slightly up and to the left to remove hard drive case from device.

⚠ To avoid damage to the hard drive or motherboard connectors; Do not pull plastic tab in a straight up direction.

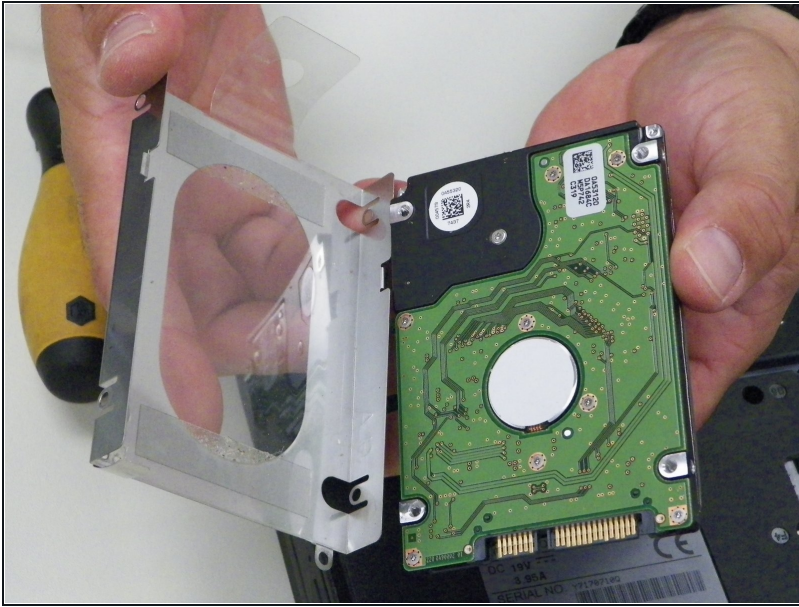
⚠ The use of a [anti-static wrist strap](#) while working with the hard drive is advise to prevent electrostatic discharge(ESD) from damaging the hard drive.

Step 6



- Remove **4** (2 on each side) Phillips 4.1 mm size screws from case.

Step 7



- Slide case away from hard drive.

To reassemble your device, follow these instructions in reverse order.