



# Apple AirPort Extreme Model A1143 Case Replacement

This guide will help you to remove and replace the back cover of the device.

Written By: Zak



---

## INTRODUCTION

This will be the starting point for any repairs that you may need to do on your Apple AirPort Extreme Model A1143. Some patience should be used when removing the case as it can be fragile.

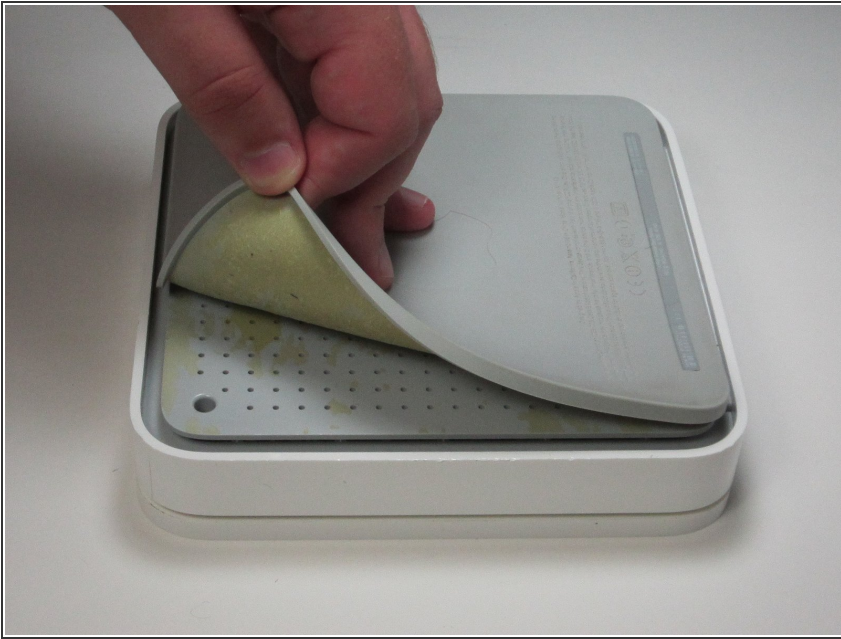
---




### TOOLS:

- [Phillips #00 Screwdriver](#) (1)
  - [iFixit Opening Tools](#) (1)
  - [Spudger](#) (1)
-

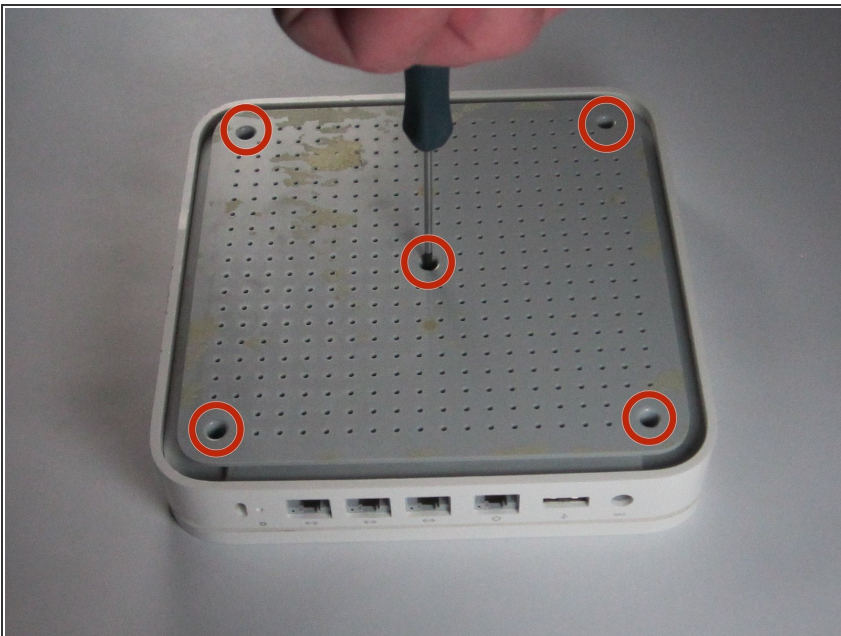
## Step 1 — Back Pad



 The back pad is held in with glue so use caution when removing to prevent tearing. Low heat may be used to help remove the pad.

- Slowly peel off the rubber pad on the bottom of the device. Start from one corner and peel with your fingers. Use heat if necessary until pad is completely removed.

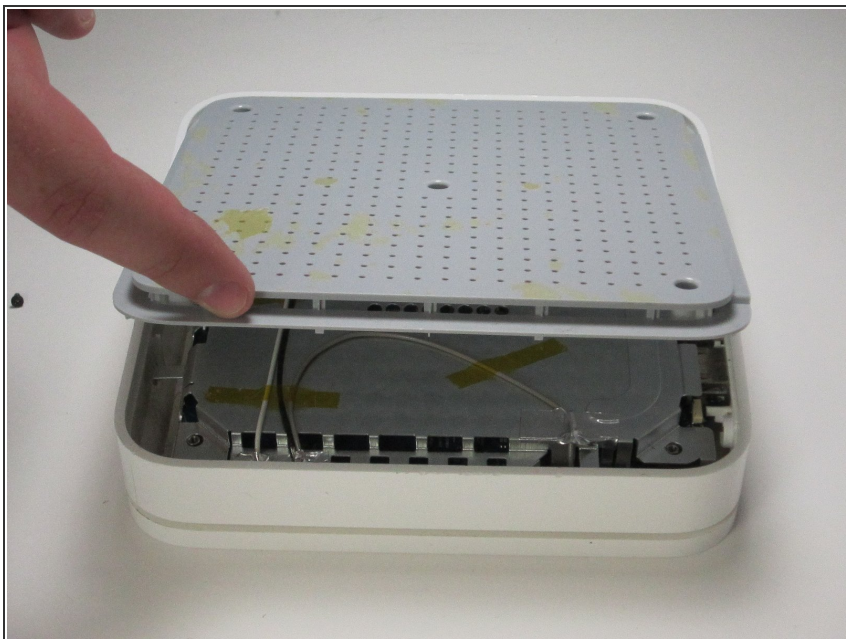
## Step 2 — Back Cover



- After removing the rubber pad, unscrew the five 5mm phillips #00 screws in the holes of the back cover.

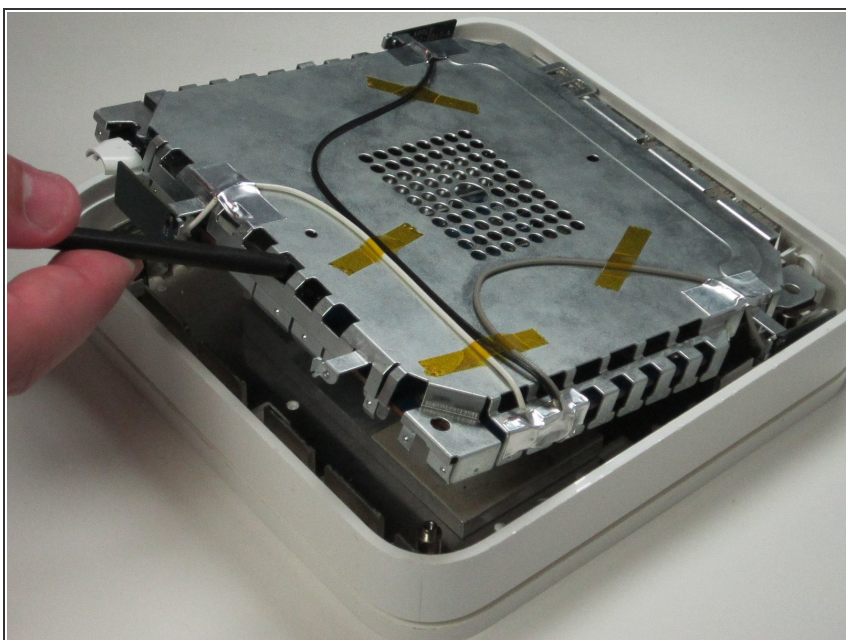


### Step 3



- Lift up the back case from the perforated edge to remove it.

### Step 4 — Remove from Case



- Remove logic board and metal casing from outer case by prying from one side using a spudger.

To reassemble your device, follow these instructions in reverse order.