



Besta Super 5000 Keyboard Replacement

Replacing the keyboard of the Besta Super 5000.

Written By: Sarah



INTRODUCTION

This guide will display a step-by-step process on how to repair and replace your Besta Super 5000 keyboard. There is no special equipment or training needed in order to complete the replacement of your keyboard. Working with electrical equipment can always be hazardous, so remember to check the warnings of each step to ensure your safety as well as the integrity of your keyboard.



TOOLS:

- [ESD Safe Tweezers Blunt Nose](#) (1)
 - [Phillips #0 Screwdriver](#) (1)
 - [iFixit Opening Tools](#) (1)
-

Step 1 — Battery



- Turn the device over so that the barcode is facing upwards.

Step 2



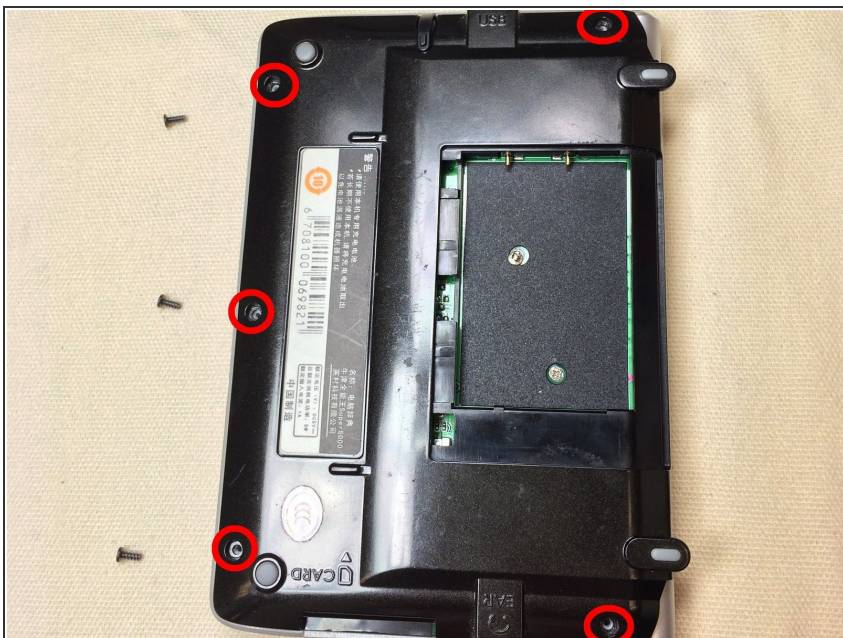
- Place your fingers on the battery cover arrow and pull the cover down and off the device.

Step 3



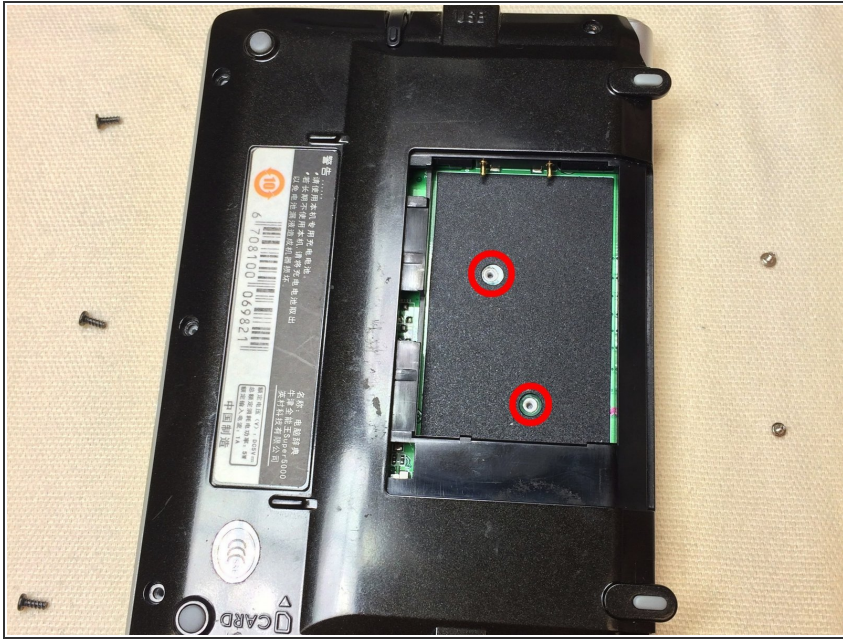
- Pull upwards on the battery tab to remove the battery from the device.

Step 4 — Back Cover



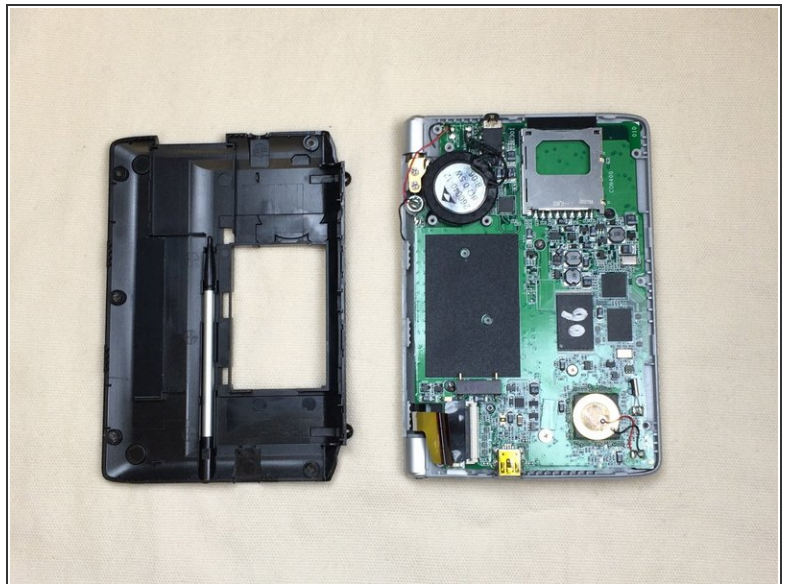
- Remove the five screws around the edge of the device using a Phillips #0 screwdriver.


Step 5



- Remove the two screws behind the battery using a Phillips #0 screwdriver.

Step 6



 Potential for device damage: All screws must be removed before you begin this step. Do not forcefully pry apart the device with screws still in it because you may damage it.

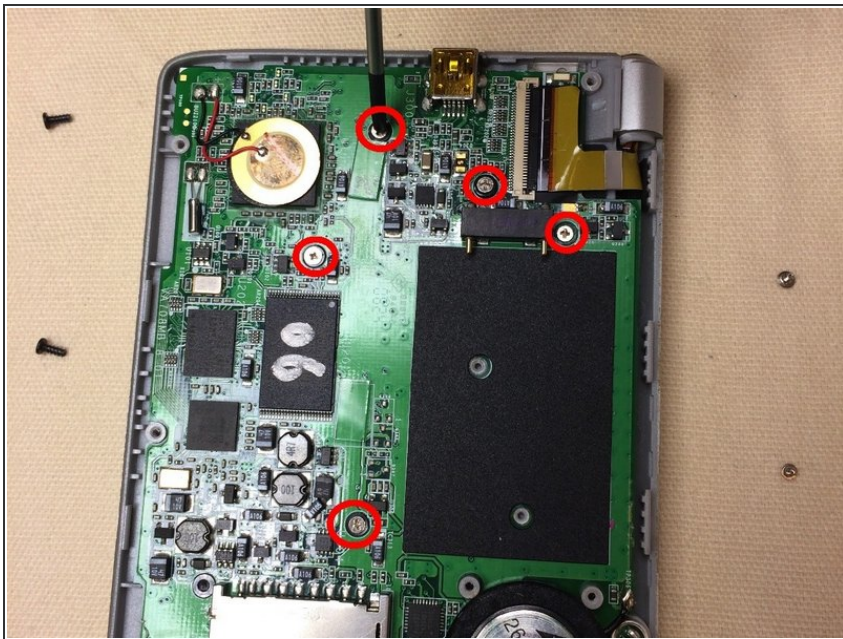
- Gently pry off the backing using an opening tool.

Step 7 — Motherboard



- Remove the three silver screws from the black round battery using a Phillips #0 screwdriver.

Step 8



- Remove the five small screws from the motherboard using a Phillips #0 screwdriver.

Step 9

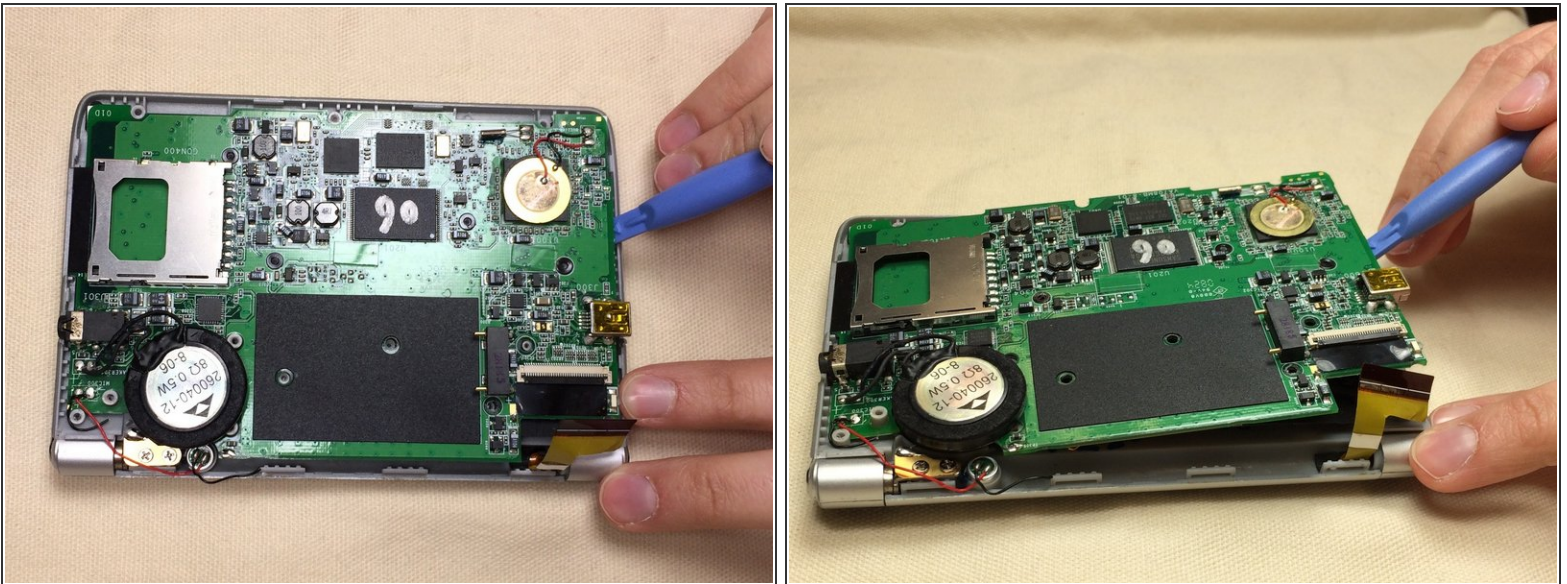


- Using a pair of tweezers, pinch the center of the yellow ribbon located in the corner of the device.

⚠ Potential for device damage: Do not yank or remove the ribbon from the device.

- Carefully pull the hidden piece of yellow ribbon out from underneath the motherboard.

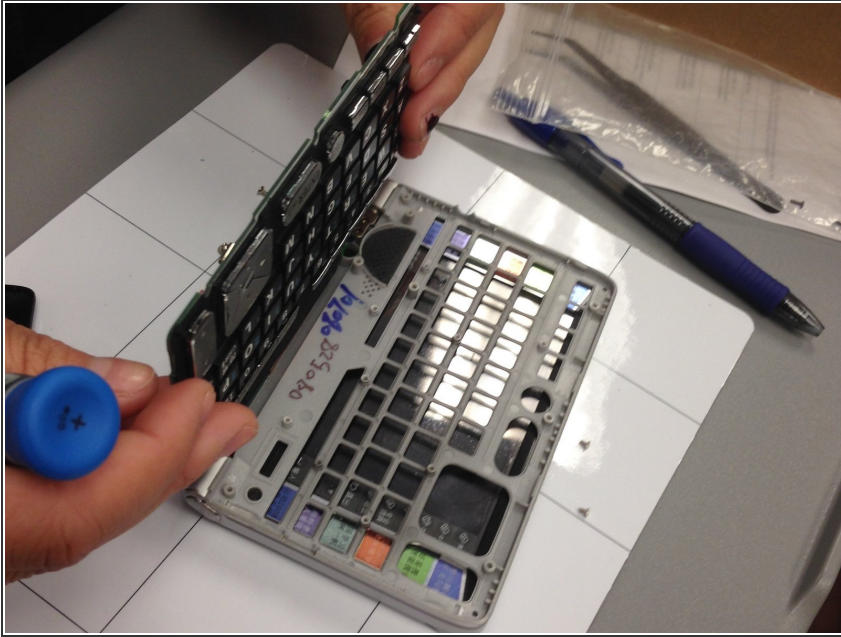
Step 10



⚠ Potential for device damage: All screws must be removed before you begin this step. Do not forcefully pry apart the motherboard with screws still in it because you may damage it.

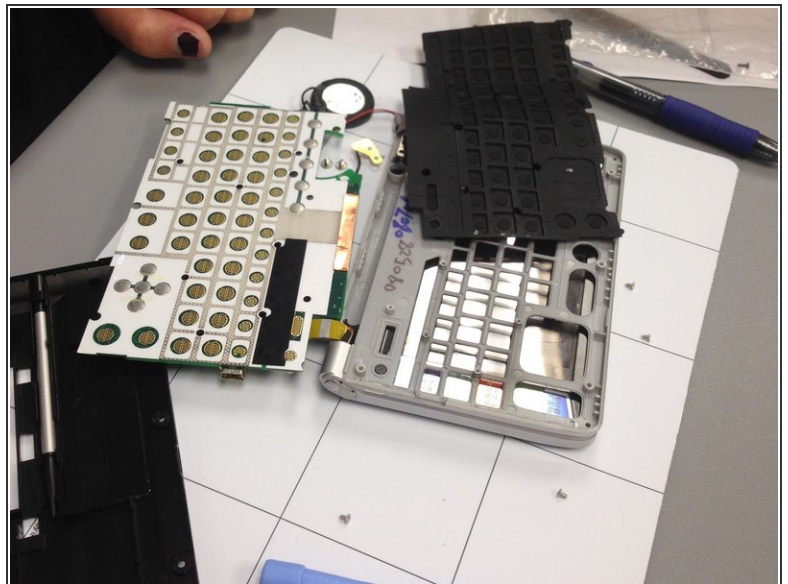
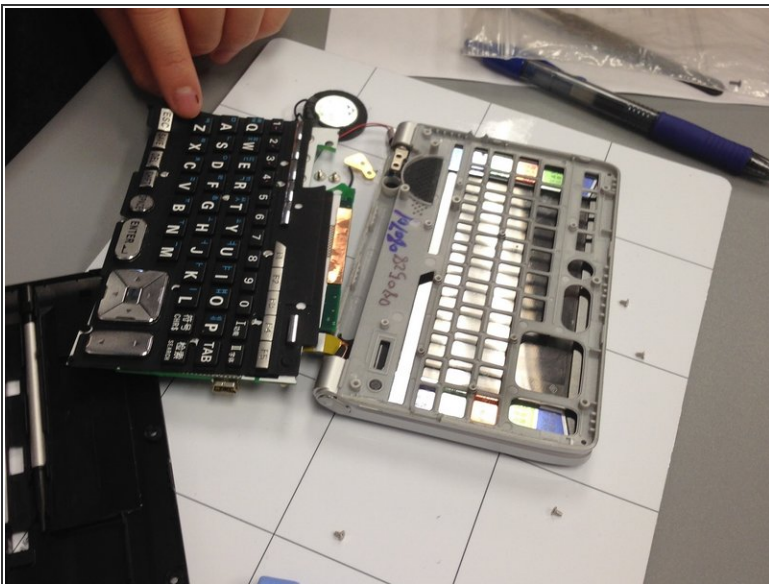
- Carefully pry off the motherboard with an opening tool.

Step 11



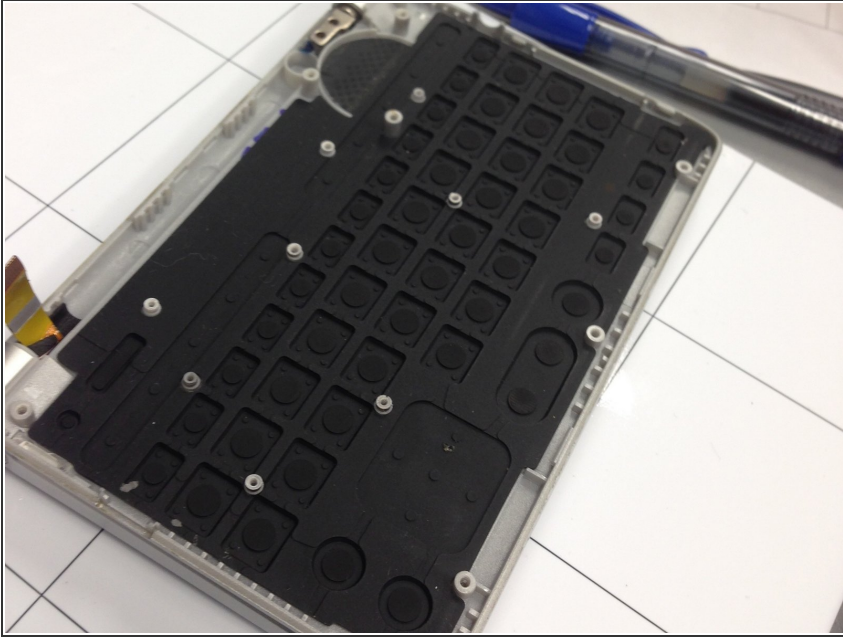
- Take the motherboard out of the body frame.

Step 12



- Lift the black keyboard mat off of the motherboard.
- Replace the motherboard.

Step 13 — Keyboard



- Replace the old keyboard mat with a new keyboard mat.

To reassemble your device, follow these instructions in reverse order.