



Sony Xperia E C1505 C1504 LCD Display Replacement

Written By: ZFix



INTRODUCTION

If the LCD display of your phone is broken, in this manual we will show you, how to disassemble the phone and how to change it.

[Please SUBSCRIBE to my channel ツ](#)

[video: http://youtu.be/z9_Qglj9PEk]



TOOLS:

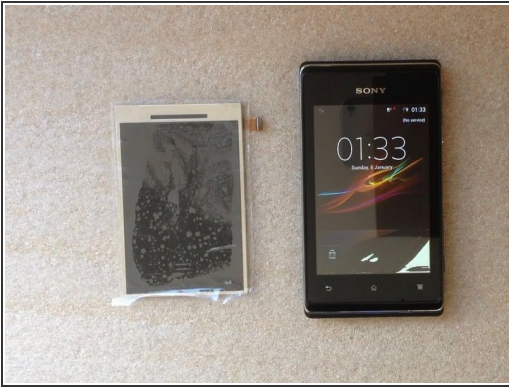
- [T5 Torx Screwdriver](#) (1)
- [iFixit Opening Tools](#) (1)
- [Tweezers](#) (1)
- [Double Sided Adhesive Tape - 3 mm Width](#) (1)



PARTS:

- [XPERIA C1505 LCD Display](#) (1)

Step 1 — LCD Display



- Switch-off the phone and remove the battery.

Step 2



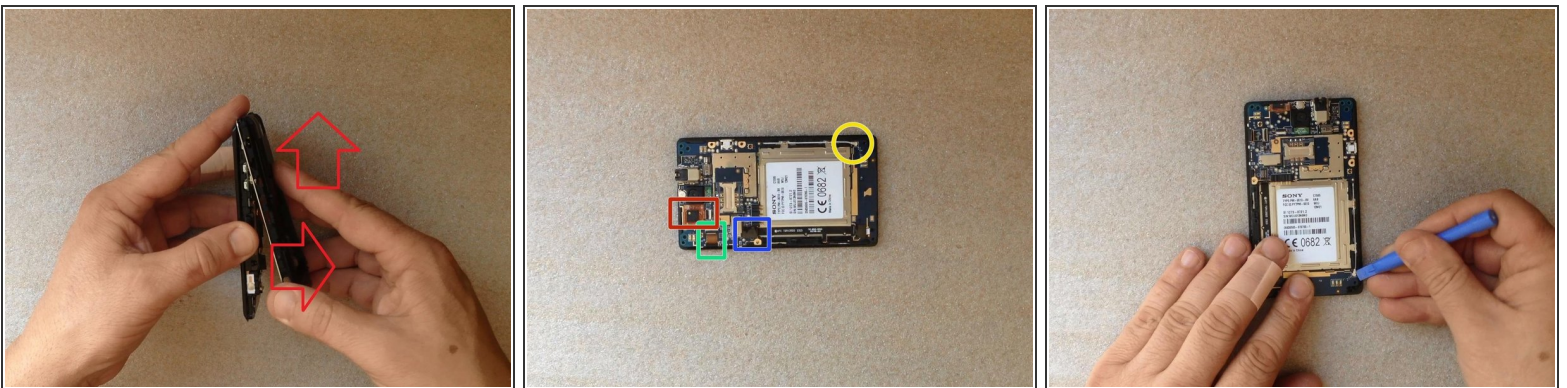
- The small bottom bezel is held by 2x locking clips.
- Preferably use plastic tools for disassembling.

Step 3



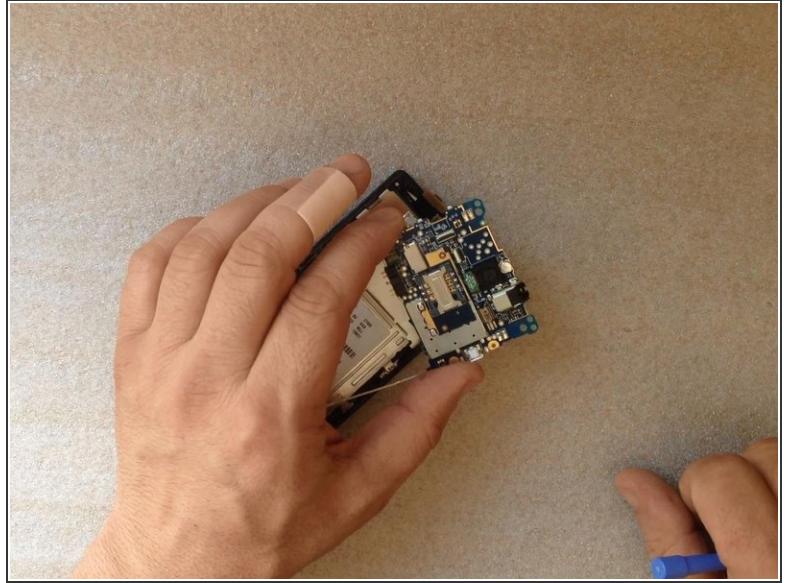
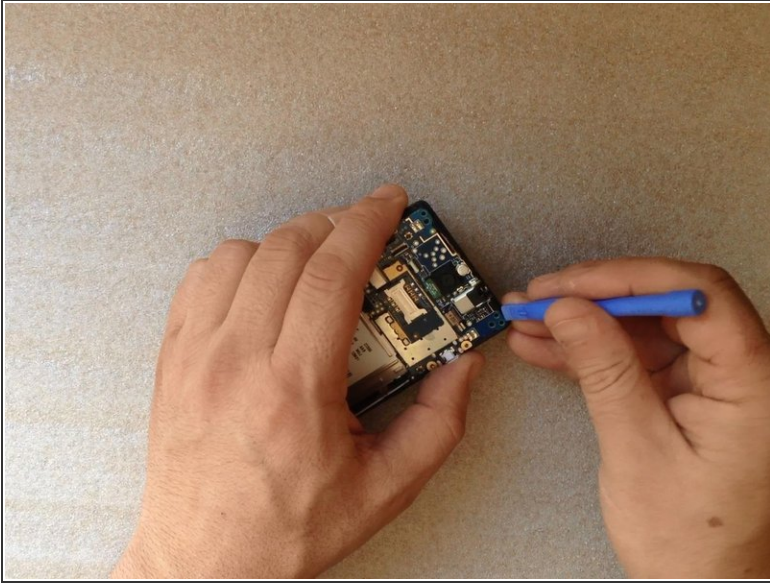
- There are 4x silver screws and 3x black screws.
- The rear cover is held by 5x locking clips.
- Two of them, at the bottom side are more hard for unlocking. You can use a screwdriver or other metal tool to unlock them.

Step 4



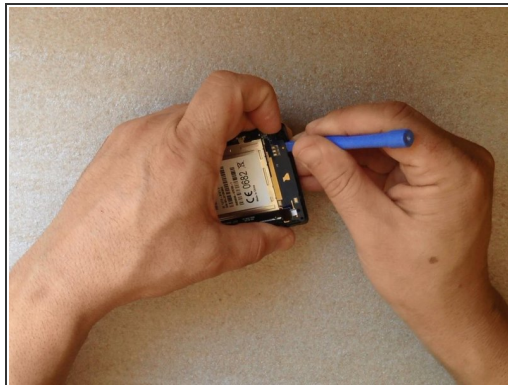
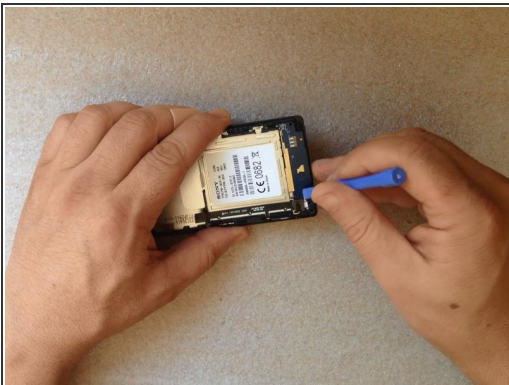
- Remove the back cover.
- With a plastic tool disconnect one by one:
 - LCD Display flex cable
 - Touchscreen flex cable
 - Menu Buttons Board flex cable
 - Coaxial Wire Antenna cable

Step 5



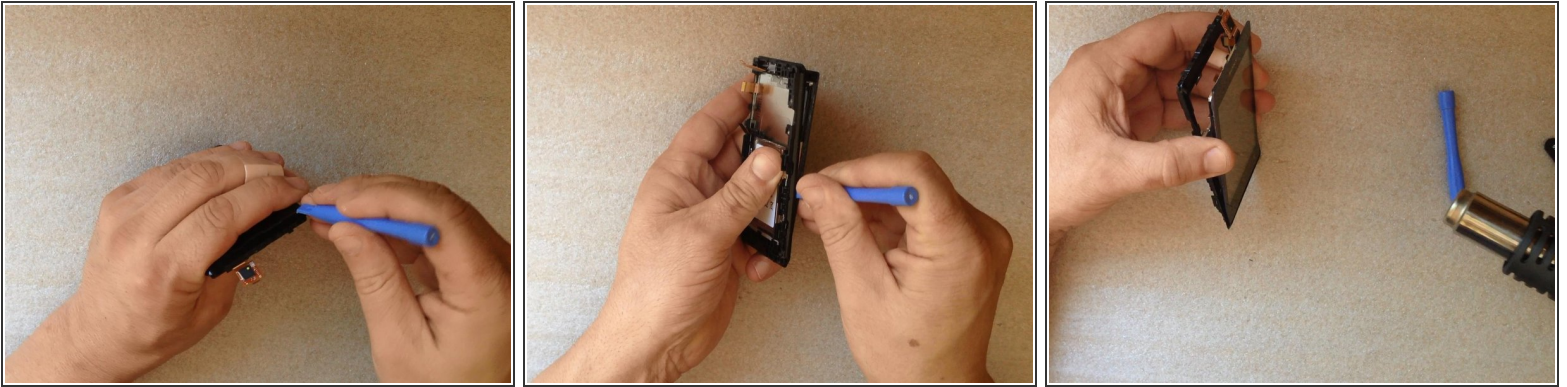
- Carefully remove the main board.

Step 6



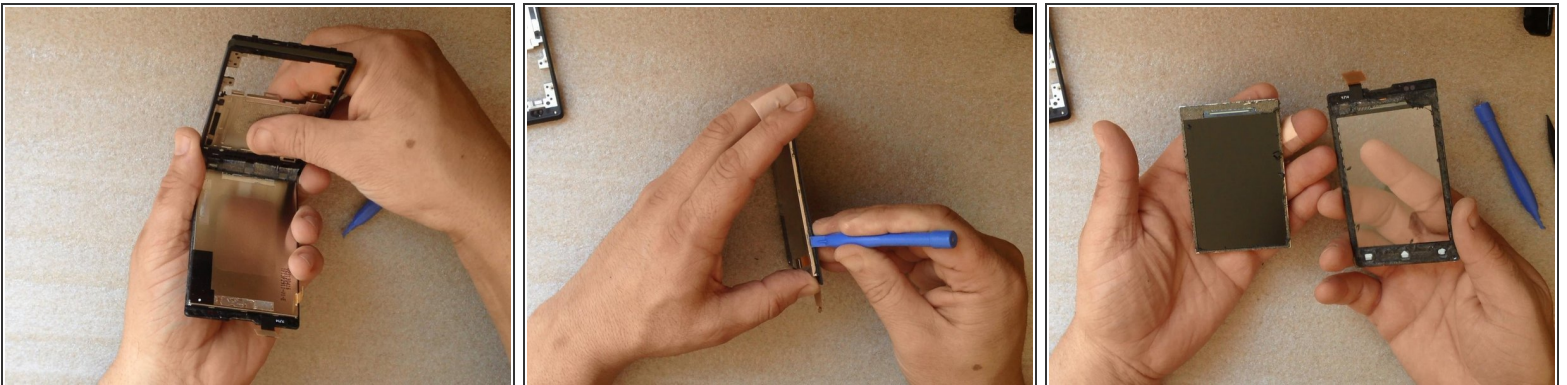
- Disconnect the other side of the flex cable and remove the Home Buttons board.
- Unstick the camera button.

Step 7



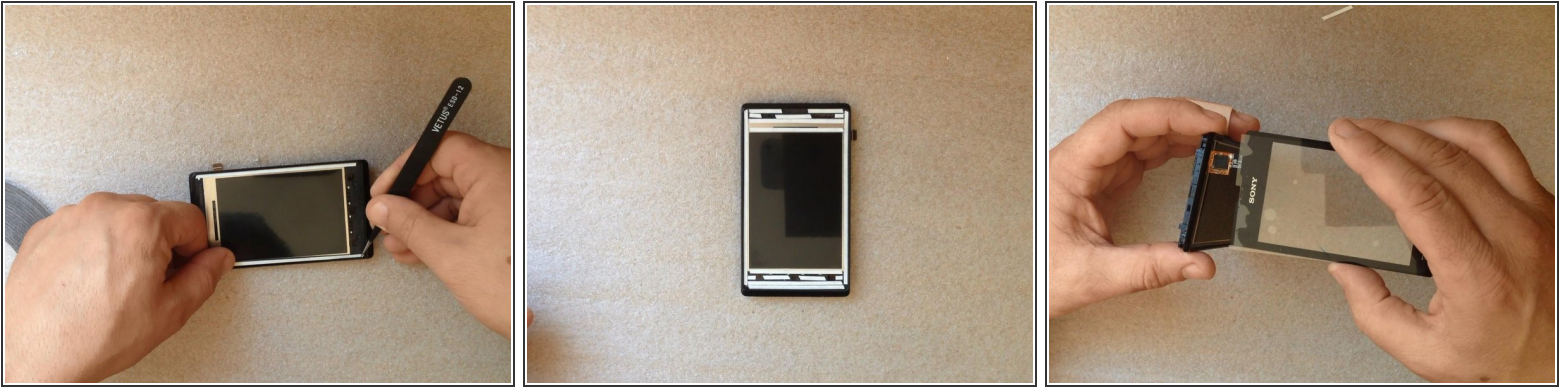
- The touch screen is stuck to the frame with double side adhesive tape.
- By using plastic tools gently start separating.
- At the bottom is glued on firmly because the bonded surface is larger.
- Use a hot air to make separating more easy and safety.

Step 8



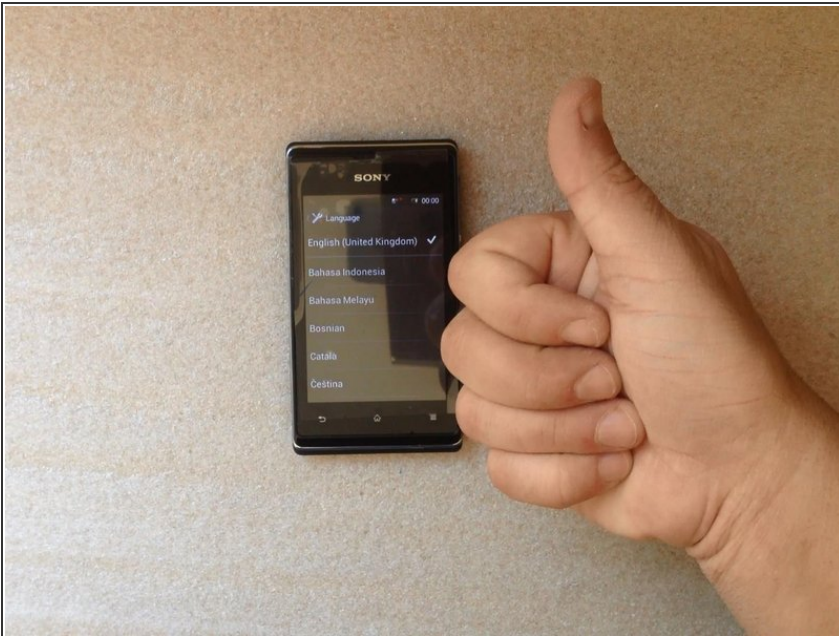
- With a plastic tool, carefully separate the LCD display from the touch screen.
- Clear the LCD Display from the old adhesive tape.

Step 9



- Install the new LCD into the frame and put adhesive tape. Be careful not to cover the holes (for the speaker, menu buttons etc.).
- Install the Touchscreen.

Step 10



- To reassemble your device, follow these instructions in reverse order.

● .

- **Did you do it successfully?**

 [Please SUBSCRIBE to my channel ツ](#)

To reassemble your device, follow these instructions in reverse order.