



Canon PIXMA iP4850 Teardown

canon printer pixma ip4850 Teardown

Written By: Kevin D



INTRODUCTION

hello all,

today we will take down the canon pixma ip4850.

This printer has the wel know problem : B200.

Most of the time this is a printhead problem.

you will see how you can replace the printhead and other parts. enjoy !

be carefull : its not an easy guide!



TOOLS:

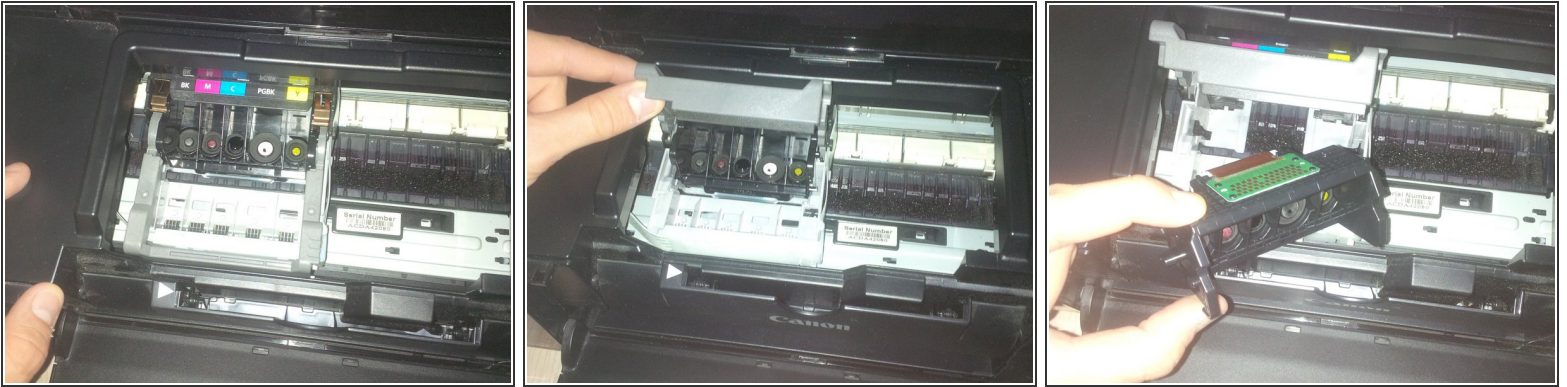
- [Metal Spudger](#) (1)
 - [Phillips #1 Screwdriver](#) (1)
 - [Phillips #2 Screwdriver](#) (1)
 - [Phillips #000 Screwdriver](#) (1)
-

Step 1 — Canon PIXMA iP4850 Teardown




- this printer has the well known B200 error.
- we will take the printer apart.
- first step : remove all the loose parts.
- remove the panel at the back.

Step 2

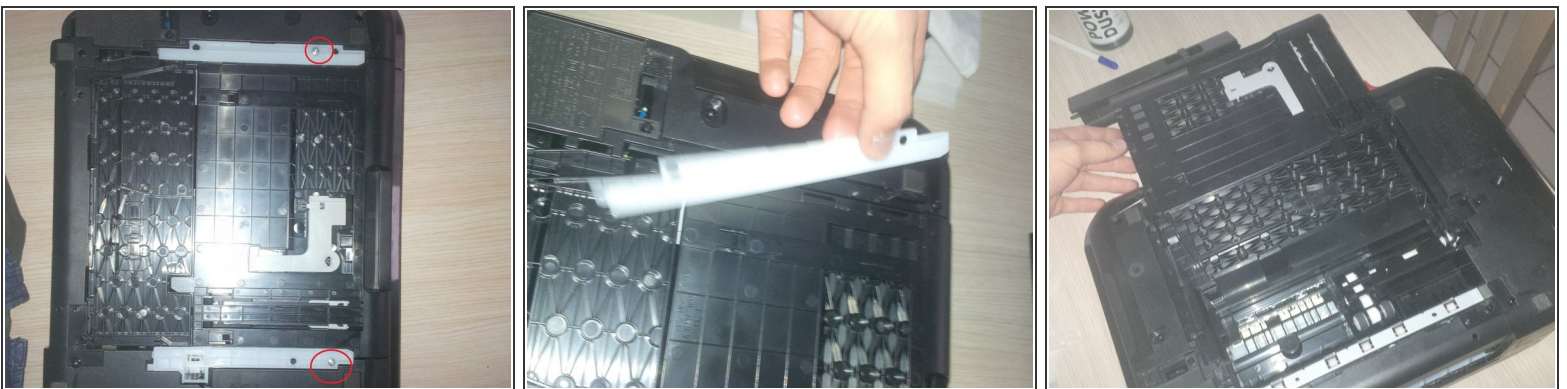


- now we will remove the printhead and the cartridges.

 be careful with the remaining ink.

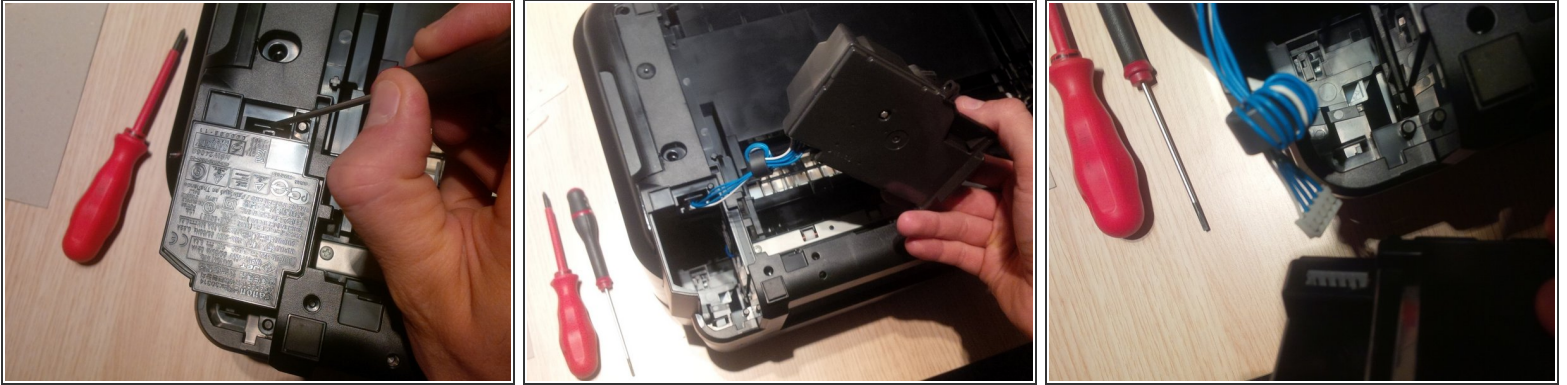
- To remove the printhead you have to plug in the printer again and open up the front panel (like you have to remove the cartridges).
- to remove the printhead you have to pull the lever up (grey), be careful it's very rough to pull it up.
- remove the printhead, if you only replace the printhead the guide stops here. be careful for the PCB board, if you only clean the printhead do it carefully. clean it with distilled water, but do not touch the PCB.

Step 3



- remove the papertrunk at the bottom, see picture 3
- now remove the screws at the white clips.

Step 4



- now we will remove the power supply.
- you'll find clips to loose the power suply . On the picture (number 1) you see how you do it. you'll here the clicks.
- pull the power supply out of the printer, and you will see the white and blue wires. you will see this wires later in the printer again.

Step 5



- remove the side panels
- you can remove this by clicking the panel of.
- search for the arrows on the upper deck of the printer. see picture 1
- than click the panel losse at the bottom of the printer.

⚠ again, and i think you know already, it's not so easy to take the printer apart. It's a lot of clicking the panels loose. and sometimes you will think the plastic will brake but it's quite flexible.

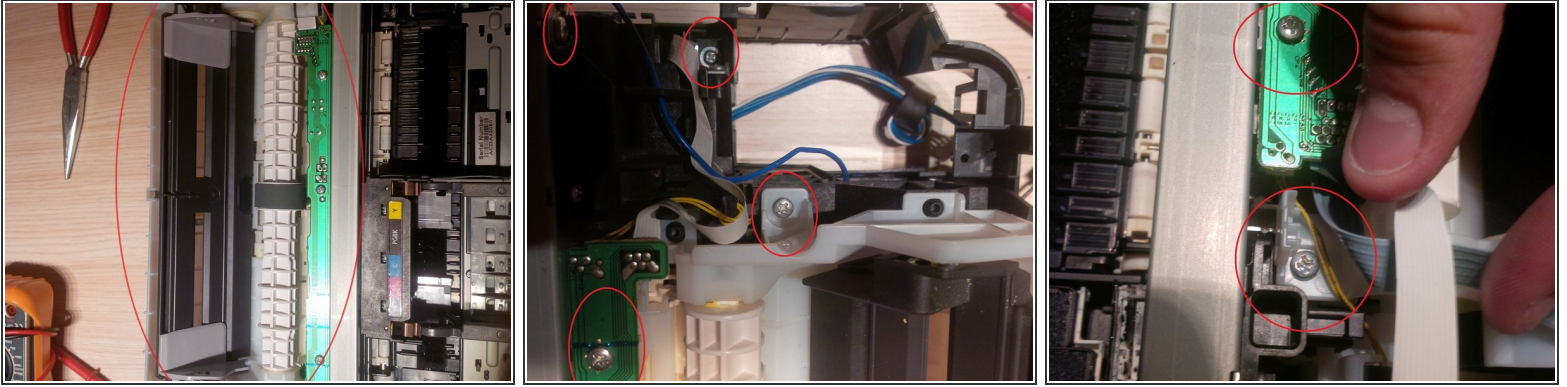
ⓘ at the left side you'll find the paper drive roll. and at the right side the PCB boards

Step 6



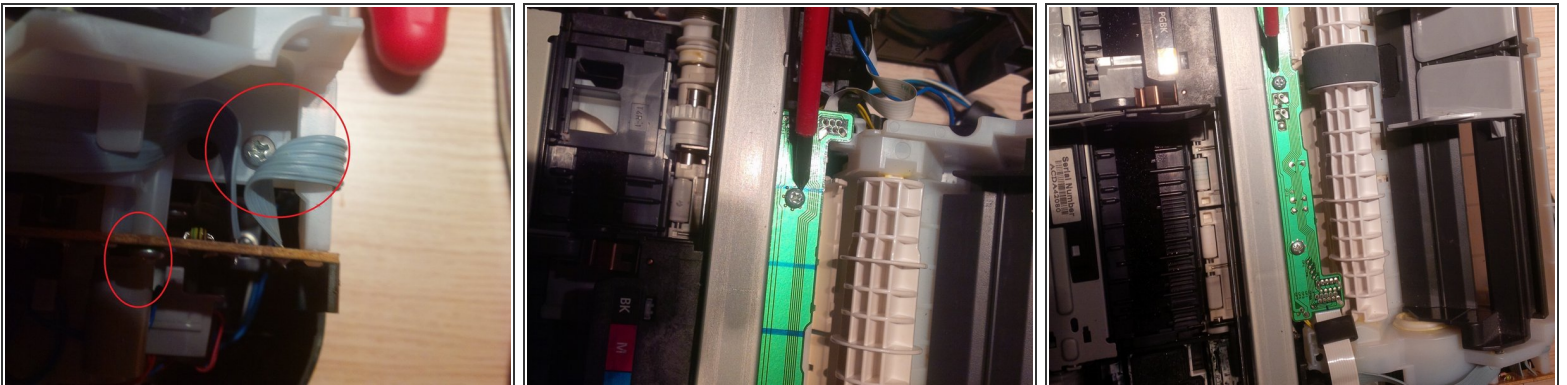
- remove the upper panel by clicking two clips. at the backside.
- normaly , if my guide is good enough, the printer looks like picture 3 now.

Step 7



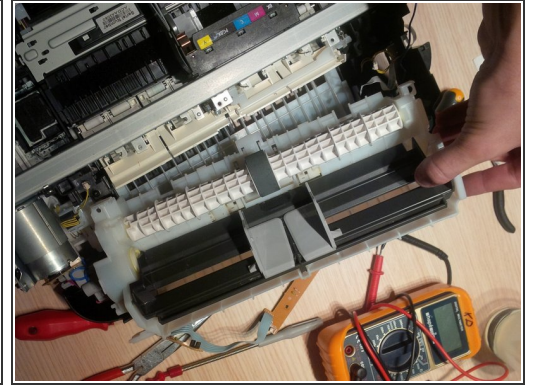
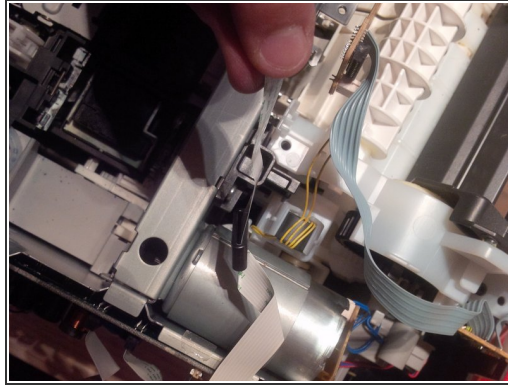
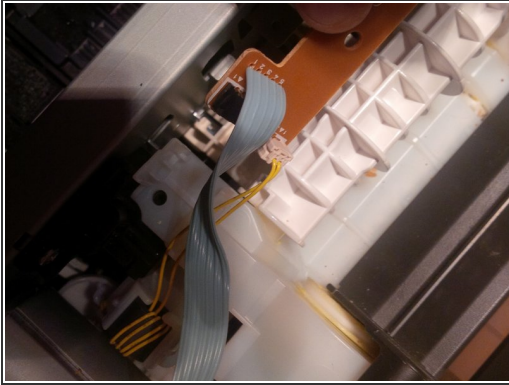
- remove the printer paper roll
- remove the red circled screws.
- this step and the next is actually 1 big step.

Step 8



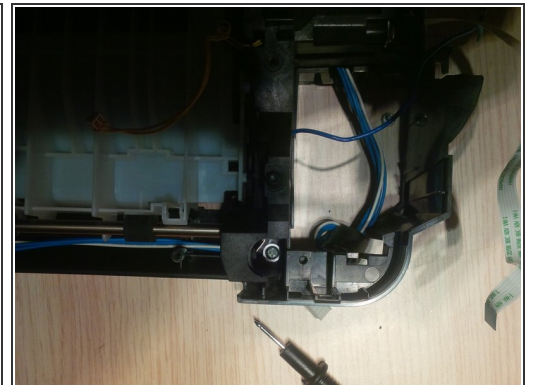
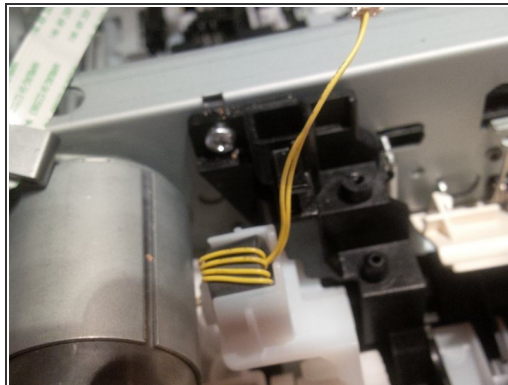
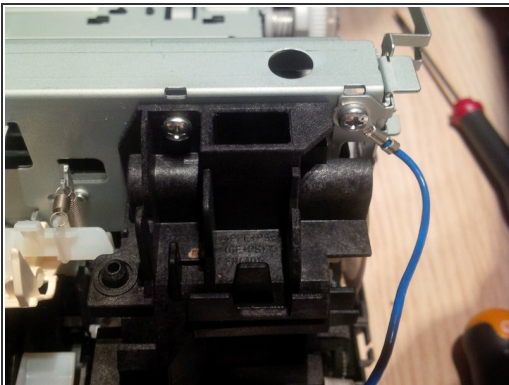
- remove the 2 screws. one on a PCB board and the other in the white plastic.
- remove the long PCB , remove the three thick screws

Step 9



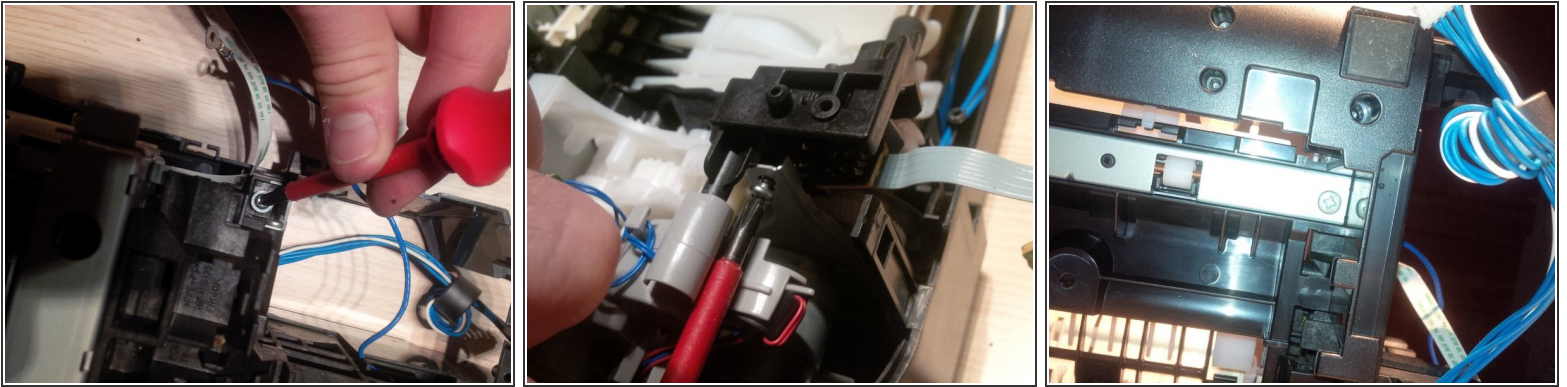
- remove all the wires, some are attached to the PCB.
- now you can remove the paper roll.

Step 10



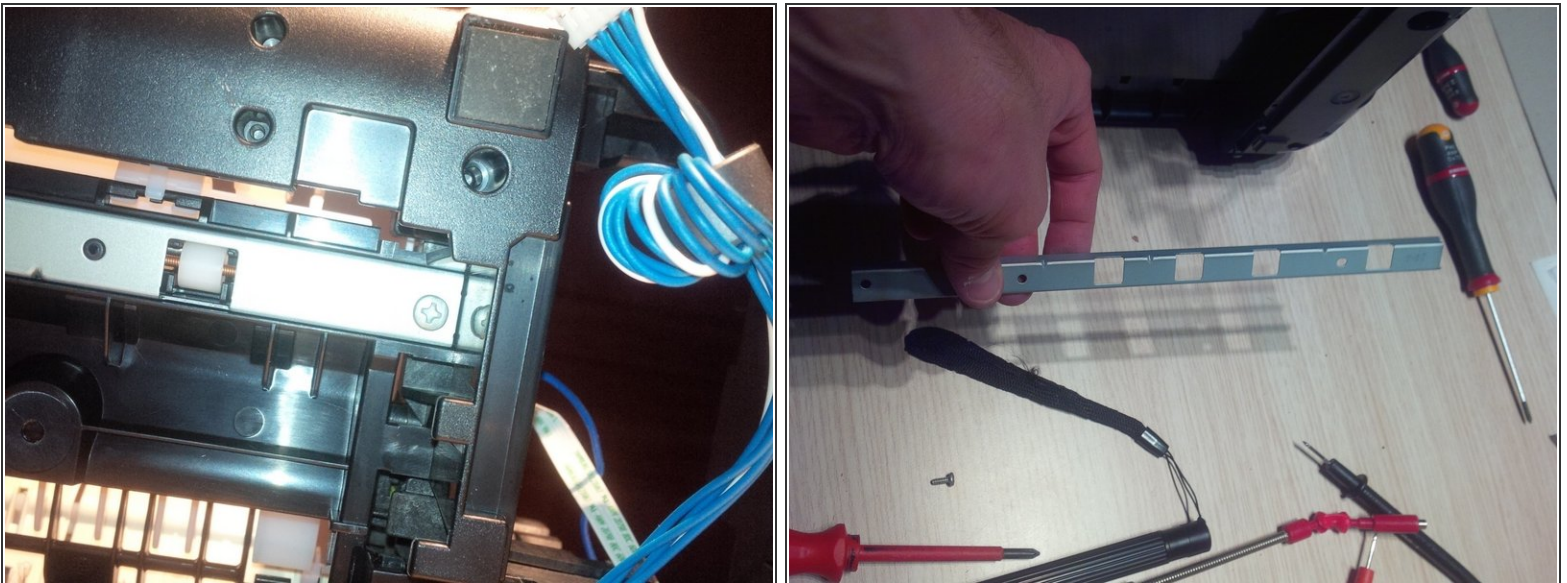
- remove the other visible screws at the back.

Step 11



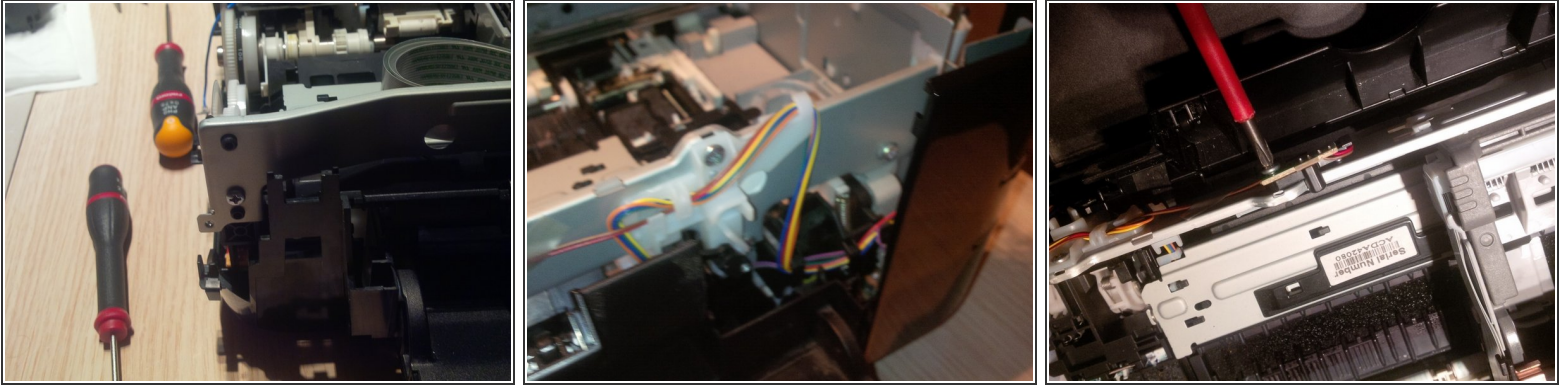
- same as before, remove all other visible screws at the side.

Step 12



- now remove the metal plate (long) , 4 screws in total. 1 screw is attached at an PCB board.

Step 13



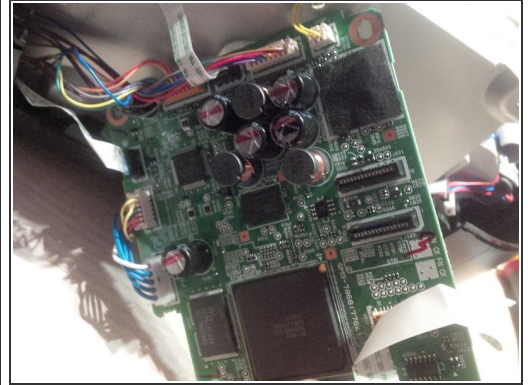
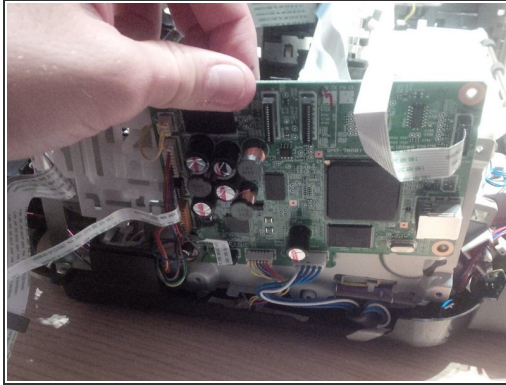
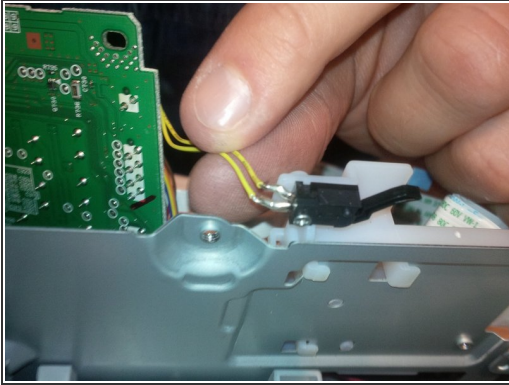
- the pictures here are to remove the other metal plate, you'll see the colored wires running trough. remove the plastic and metal frame

Step 14



- in this step we will remove the panel and PCB of the power button.
- remove the visible screws and pull the plastic frame off.

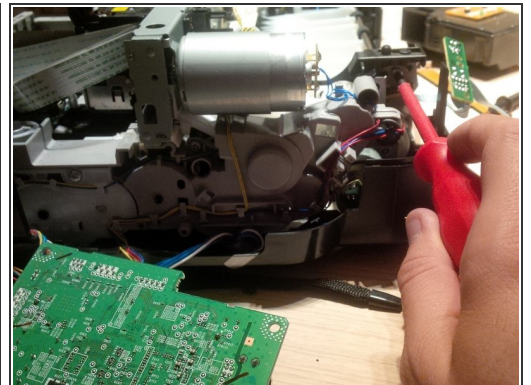
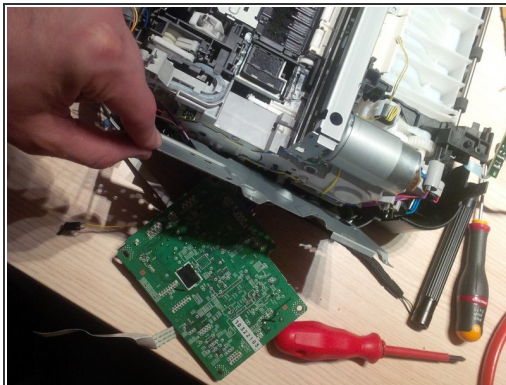
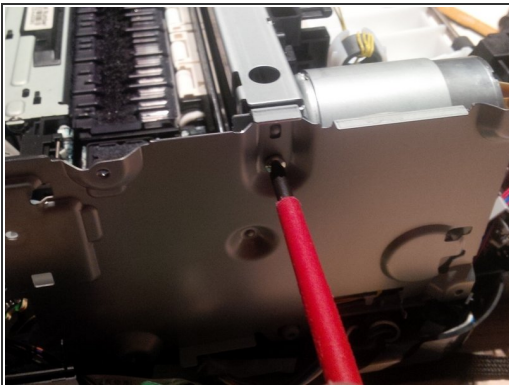
Step 15



- remove the main PCB board.

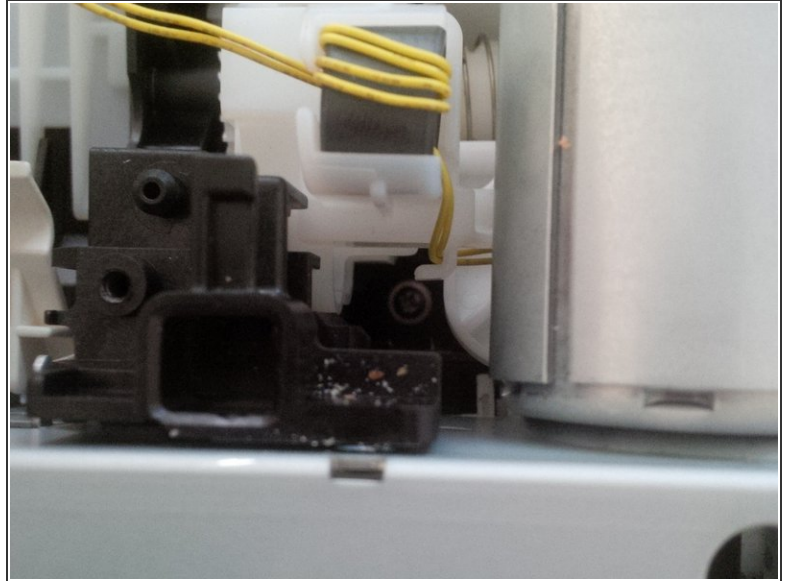
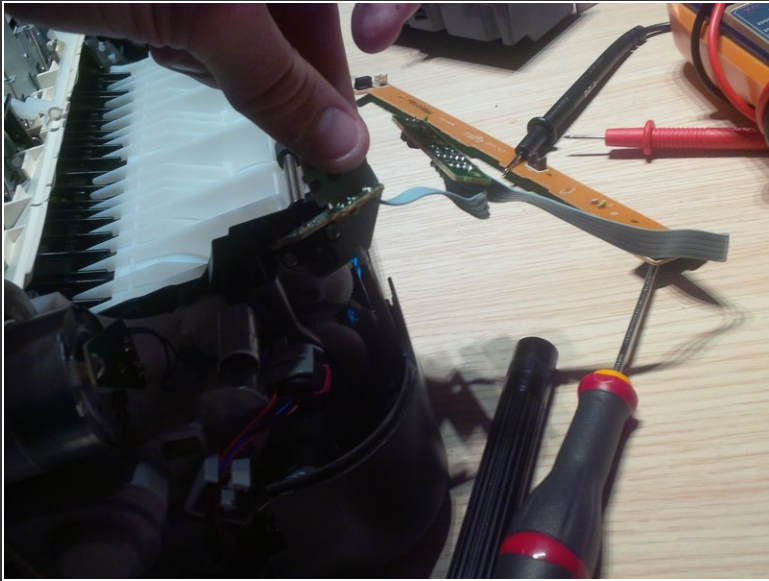
i remind were al the wires run to. i made a plan of it so i could use it later in an other printer.

Step 16



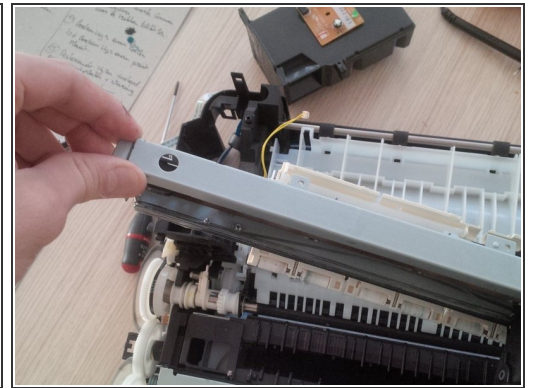
- remove the metal plate and screw behind the PCB board
- remove the plate and remove the hidden screws

Step 17



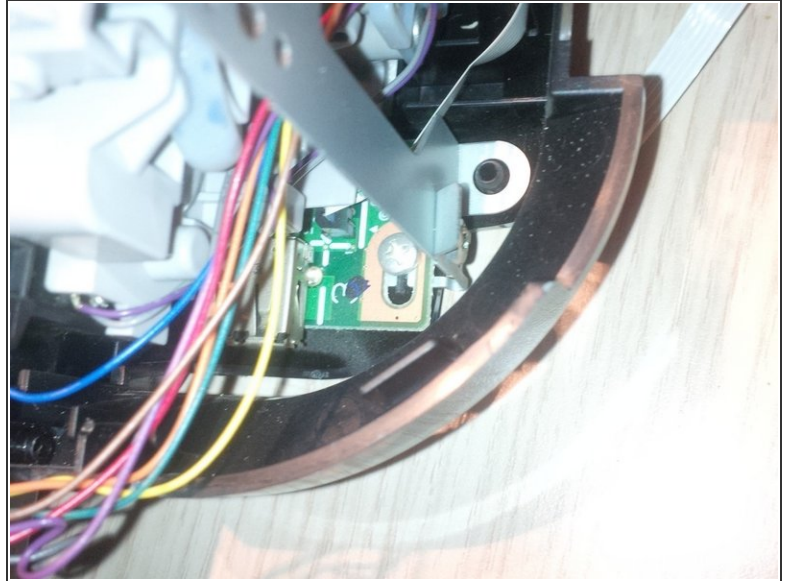
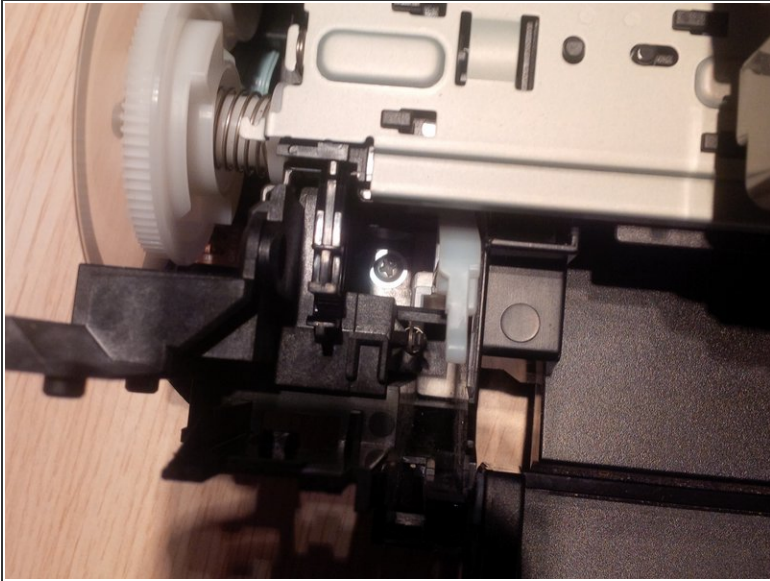
- remove all other screws

Step 18



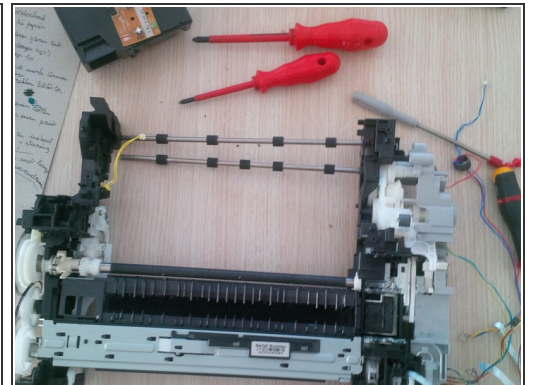
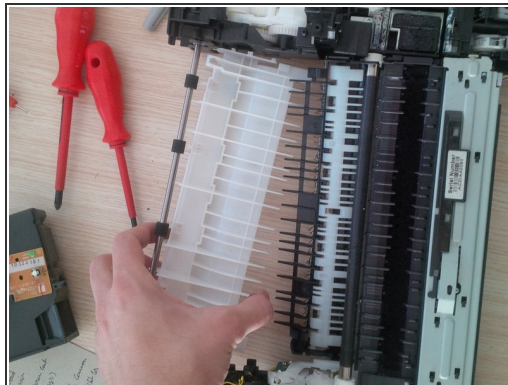
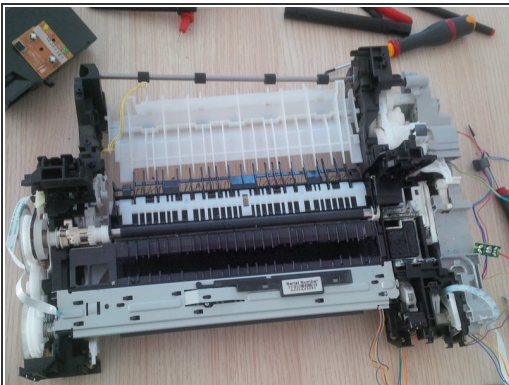
- remove the metal plate (where the printhead cable runs trough)

Step 19



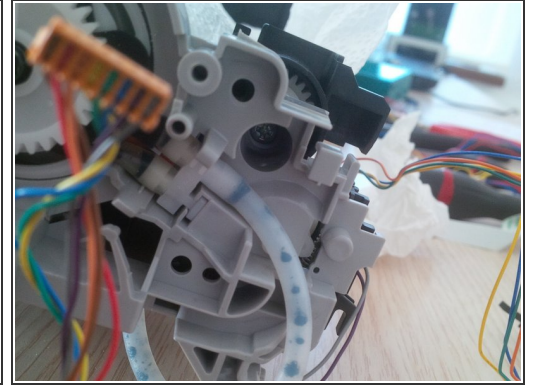
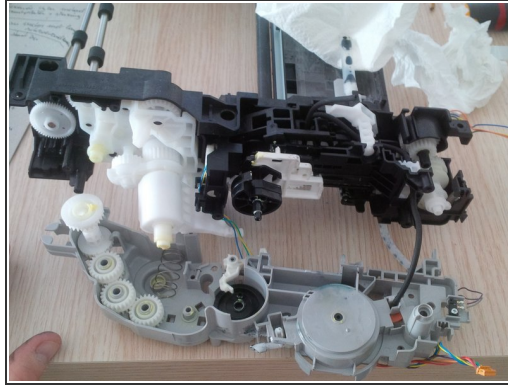
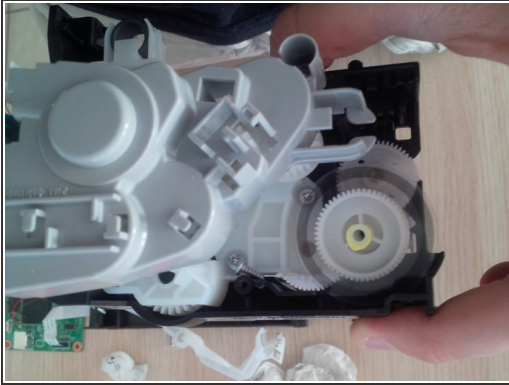
- remove the last screws from the bottom plate

Step 20



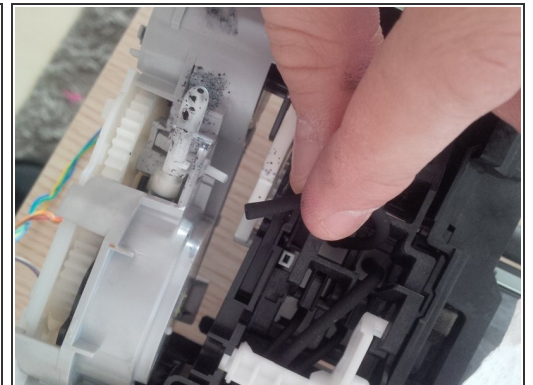
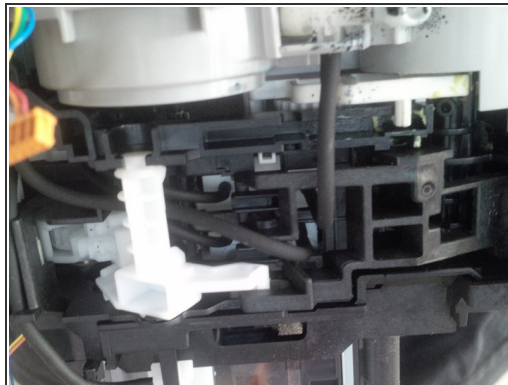
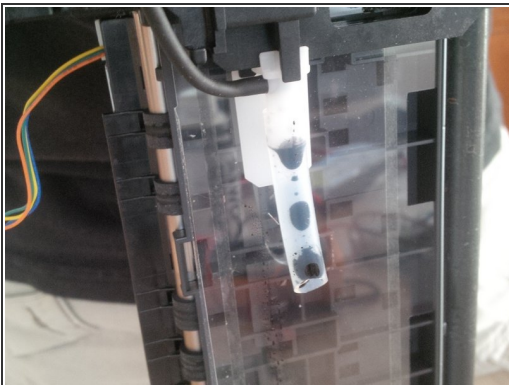
- remove the white plastic plate like you see on the pictures

Step 21



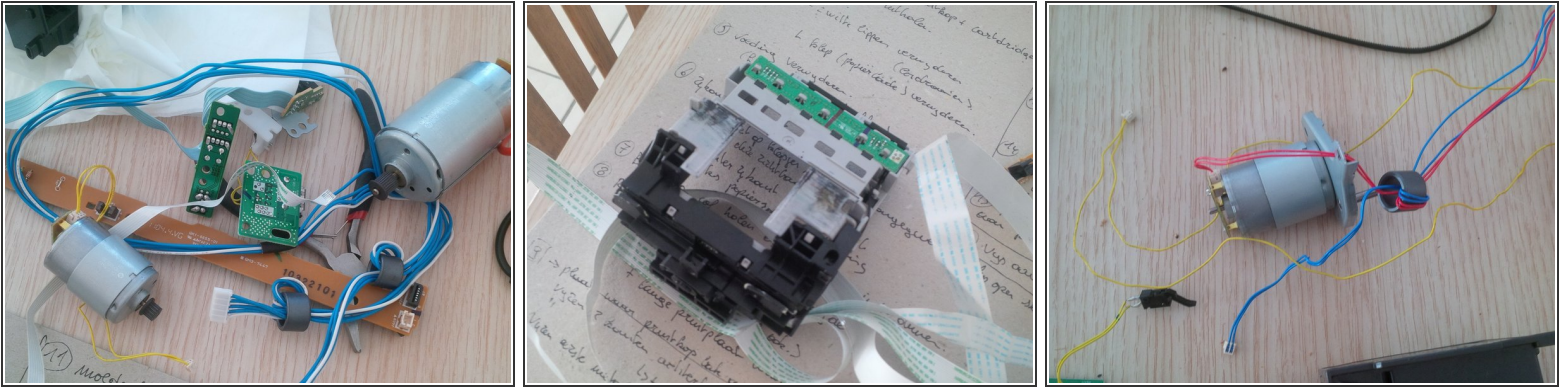
- remove the plastic rotors.

Step 22



- gently remove the ink tubes.
- there is still ink left in the tubes so use cotton towels or tissues.

Step 23



- in the last pictures you will see all the parts like the motor PCB boards, power button print head holder ...
- hope this guide helped you out.

To reassemble your device, follow these instructions in reverse order.