



# JVC GR-D290U LCD Screen Replacement

This is a step-by-step guide to replace an LCD screen in a JVC GR-D290U camera.

Written By: justin chen



---

## INTRODUCTION

This is a step-by-step guide to replace an LCD screen in a JVC GR-D290U camera.

---

### TOOLS:

- [Phillips #00 Screwdriver](#) (1)
  - [iFixit Opening Tool](#) (1)
-

## Step 1 — LCD Screen



- Remove the camera battery. (Not shown.)
- Remove the 2 screws connecting the back plate to the camera base.

## Step 2



- Remove the 2 screws on the side opposite the LCD screen.

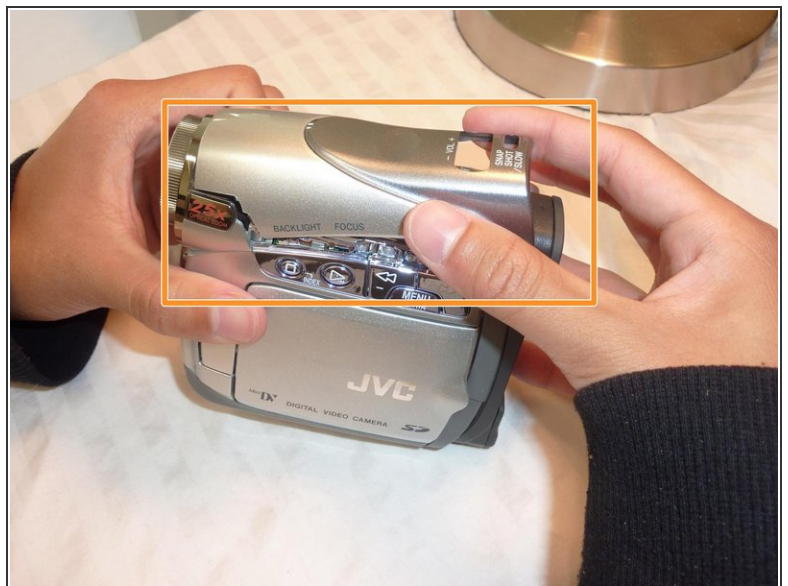
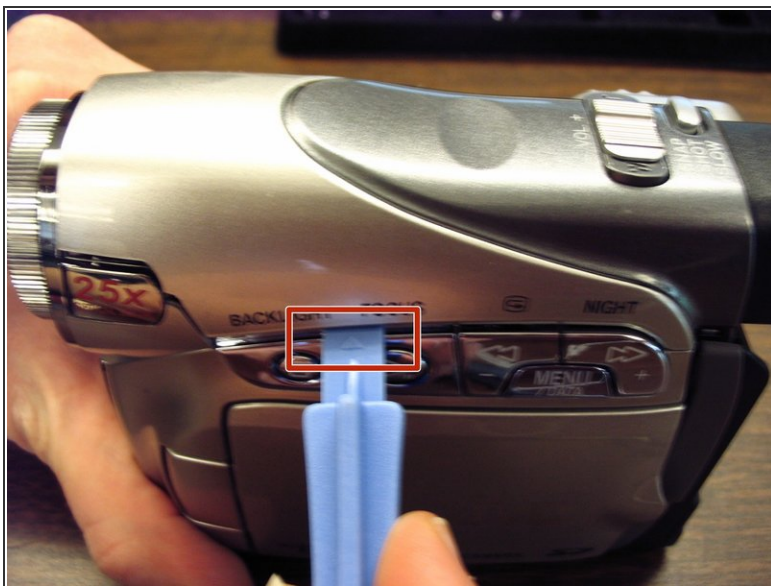


## Step 3



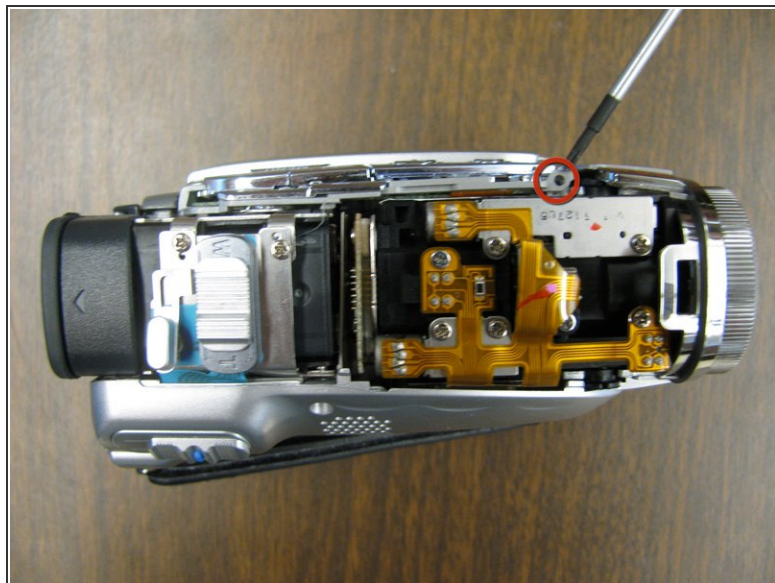
- i Note: Open the LCD screen for better access to remove the screw. Reclose the screen when finished.
- Lift up the dark gray tab on the LCD side of the camera and move it aside.
- Remove the screw under the dark gray tab and then replace the tab.

## Step 4



- Place a plastic opening tool under the seam of the camera top cover and unsnap the cover.
- Pull the top cover off of the camera base and set aside.

## Step 5



- Remove the 2 screws underneath the top cover on the LCD side of the camera.

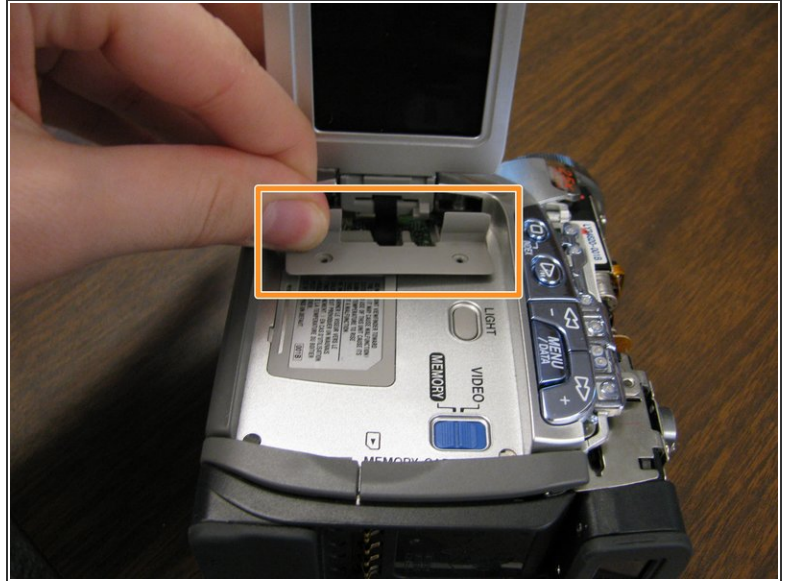
## Step 6



- Remove the 5 screws indicated on the bottom plate of the camera.



## Step 7



- Open the LCD screen and remove the 2 screws at the hinge of the screen.
- Remove the plastic hinge cover from the camera base.
- Close the LCD screen when finished.

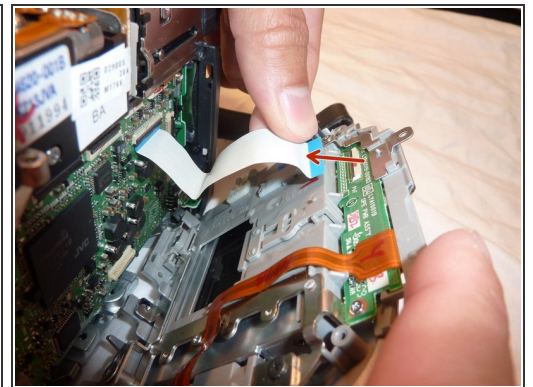
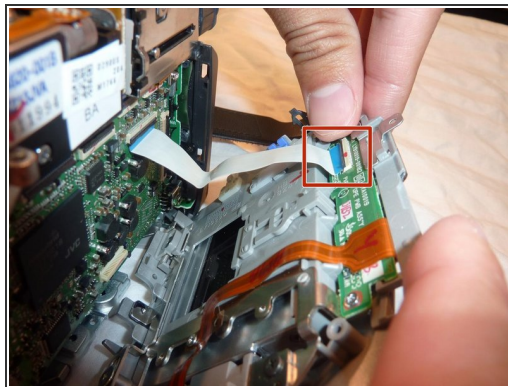
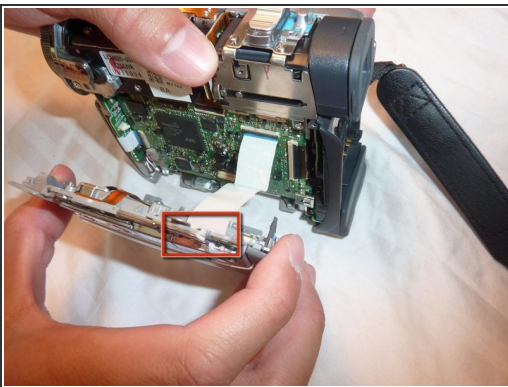
## Step 8



**⚠ Warning:** Avoid detaching the internal wiring by prying the camera apart slowly and carefully.

- Start from the bottom of the camera. Press and hold the eject button with one hand.
- Use your other hand to pry the LCD screen cover from the base. Leave the labeled side closed.

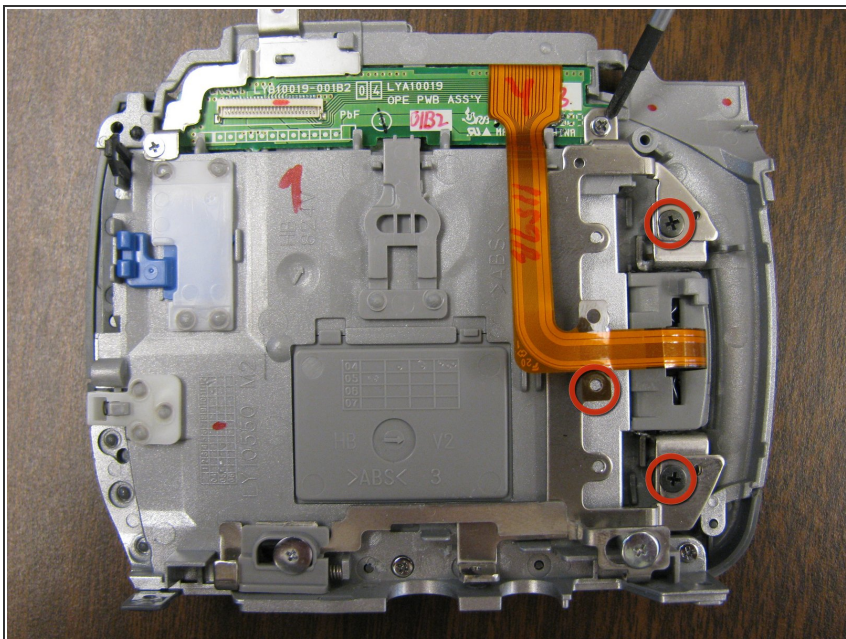
## Step 9



- Detach the white tab from the LCD screen side of the camera by gently tugging at the base of the tab.
- Put the larger camera base aside.

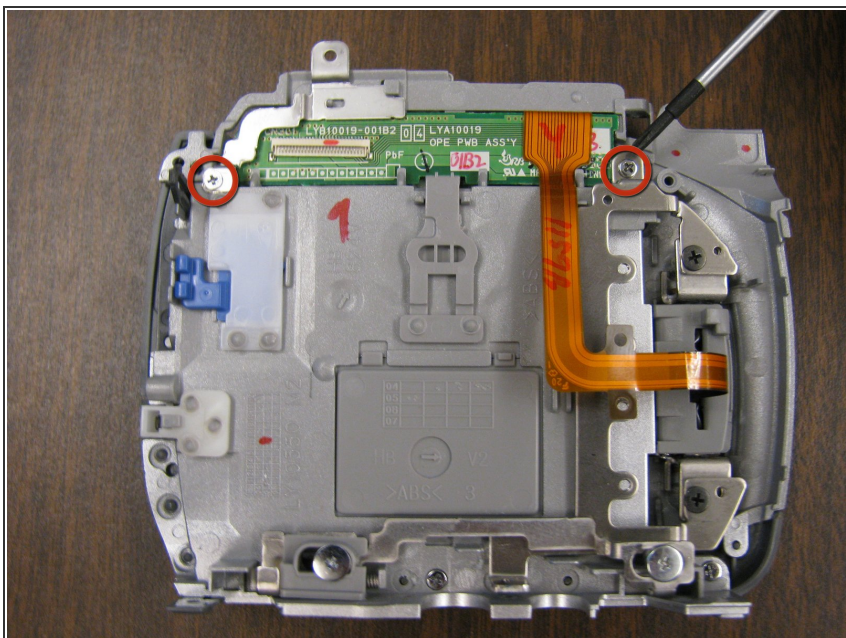


## Step 10



- Remove the 3 screws holding the LCD screen hinge to the base.

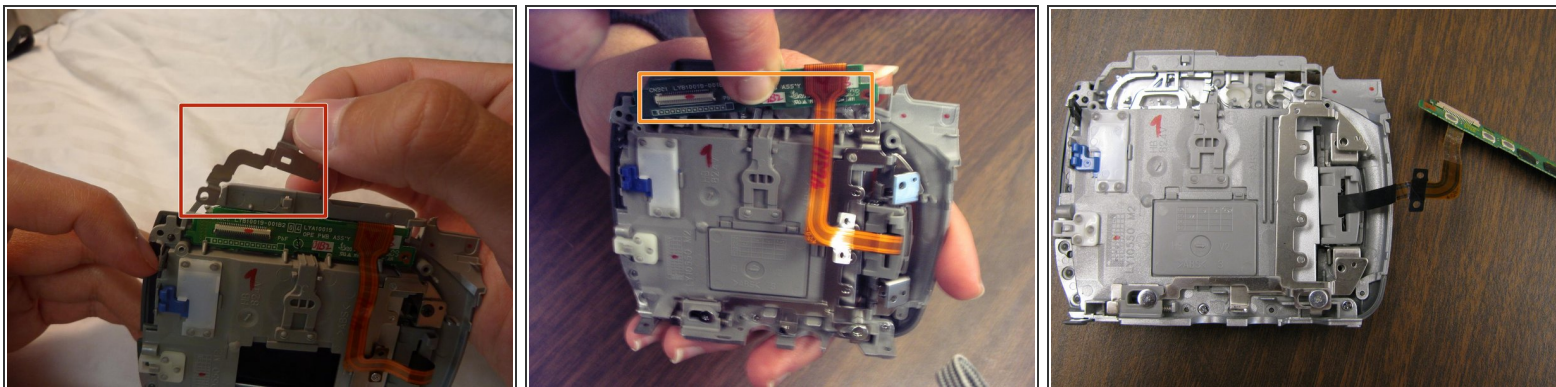
## Step 11



- Remove the 2 screws on the green circuit board.



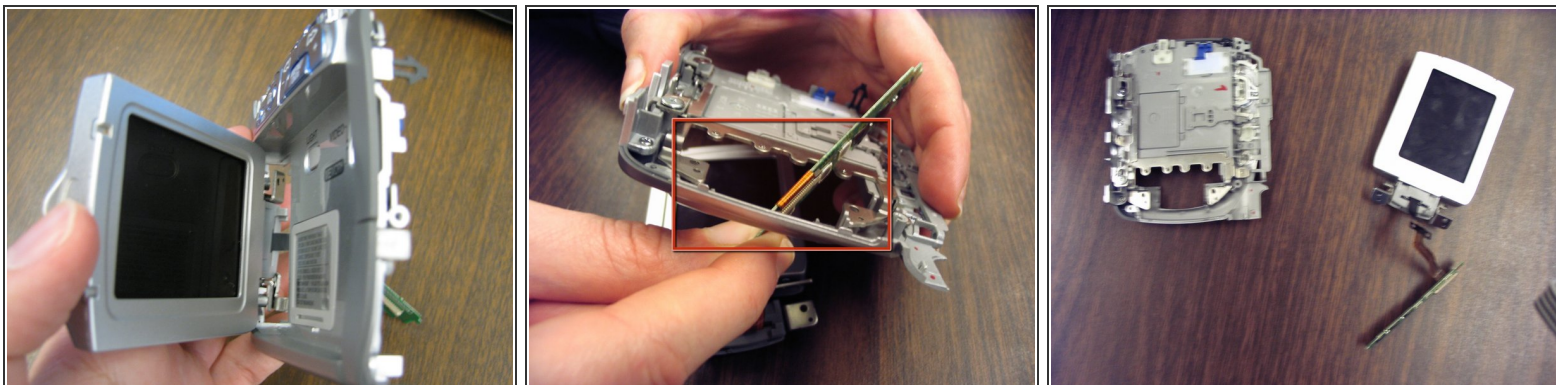
## Step 12



**⚠ Warning: The orange band must stay attached to the circuit board at all times.**

- Remove the L-shaped metal piece from the upper left-hand corner of the circuit board.
- Remove the circuit board from the cover piece and move it aside with the orange band intact.

## Step 13



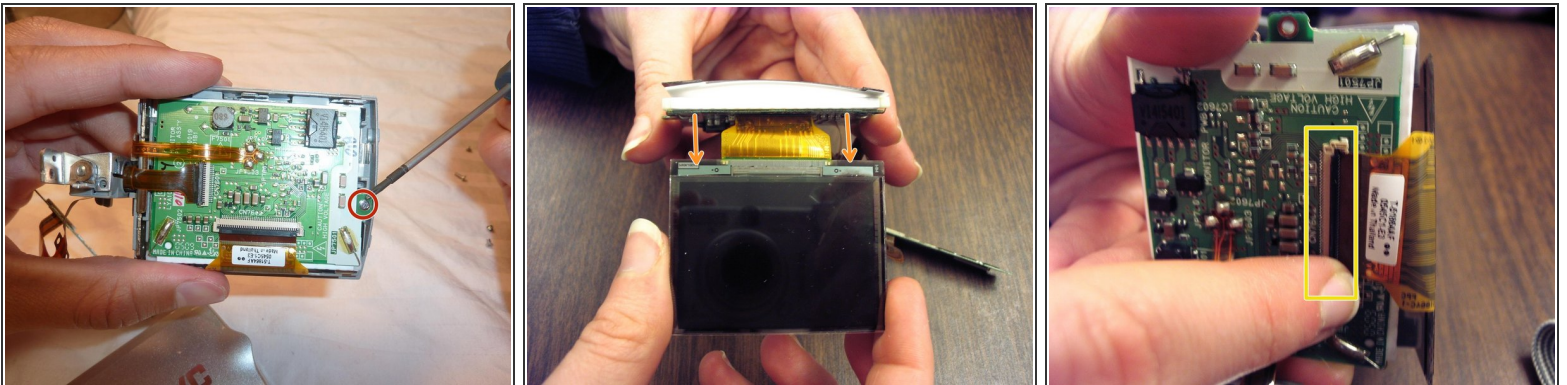
- Open the LCD screen and carefully pull the circuit board through the empty hinge space.
- Set aside the larger LCD panel.

## Step 14



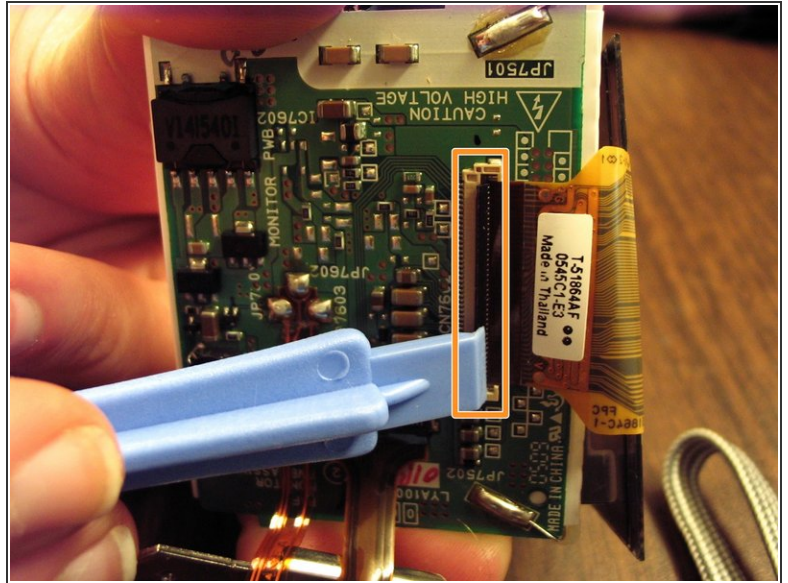
- Remove the 2 screws on the hinge side of the LCD screen.
- Remove the screw at side of the LCD screen.
- Pull it open with a plastic opening tool and pry it apart.


## Step 15



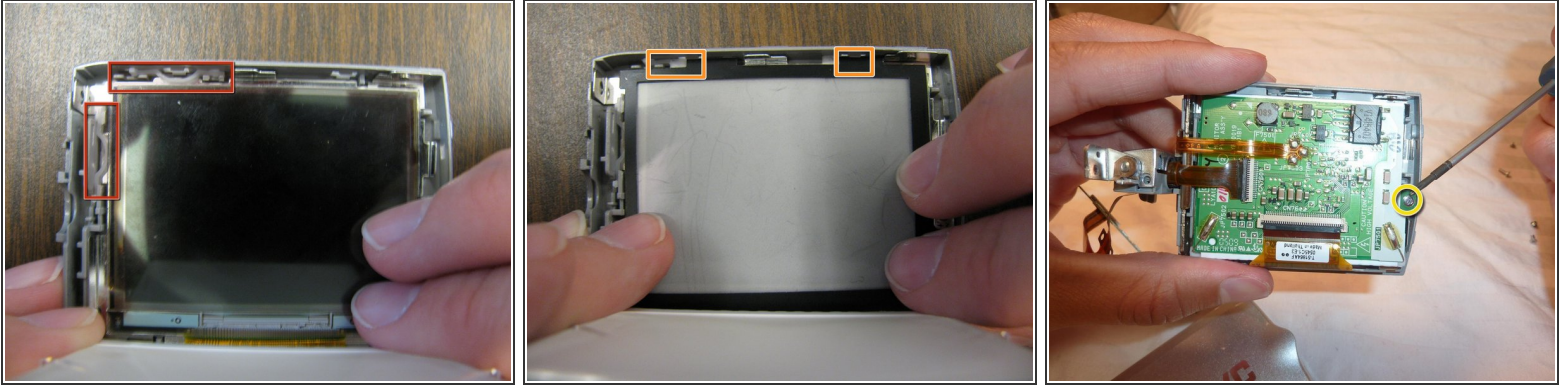
- Remove the screw in the circuit board.
- Pull the LCD screen pack from the frame with the circuit board on top.
- Detach the LCD screen by firmly grasping the copper tab and gently tugging until the latch unsnaps.





- Connect the new LCD screen by fitting in the copper attachment site to the thin, black clasp on the circuit board.
- Fold over the black clasp and snap it into place.
-  Note: You may need to use the plastic opening tool to snap thin black clasp into place.

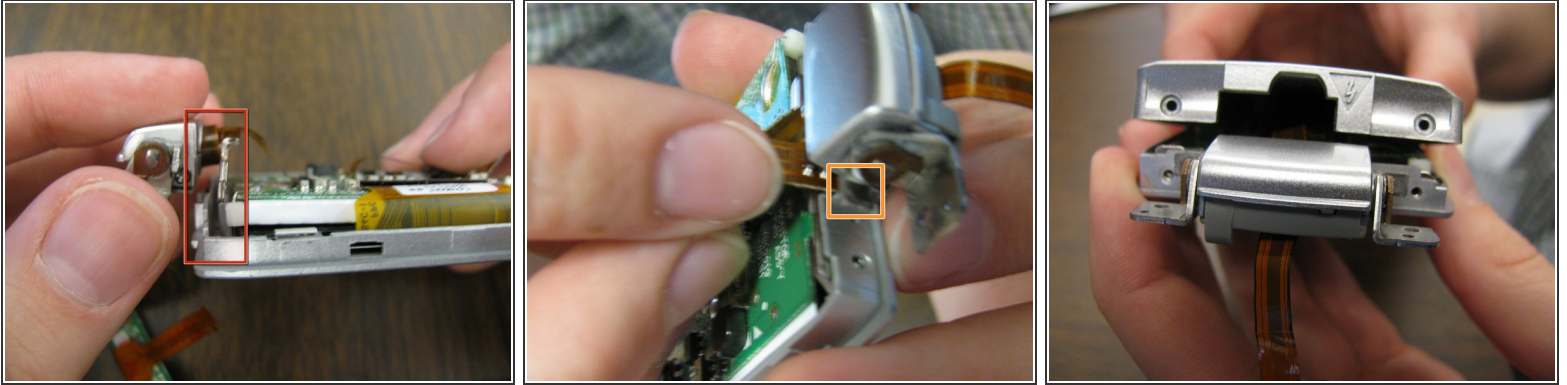
## Step 17



- Put the LCD screen into the silver frame and make sure it lies flat. It should line up with the two white plastic brackets.
- Place the black film frame lined up with the white film into the silver frame. Both should be held in place by tabs.
- Place the circuit board over the film layers.
  - Screw in the circuit board to the frame.
- Double-check that the LCD screen lies flat in its frame and reinsert the circuit board screw.

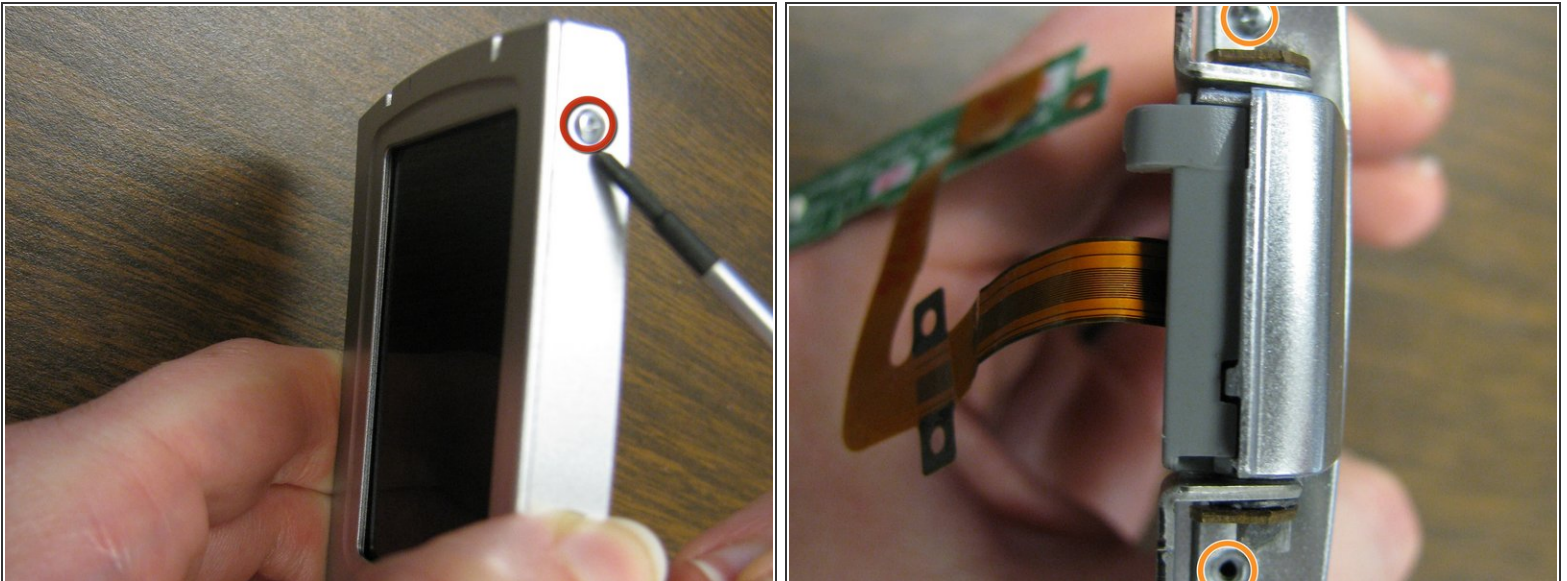


## Step 18



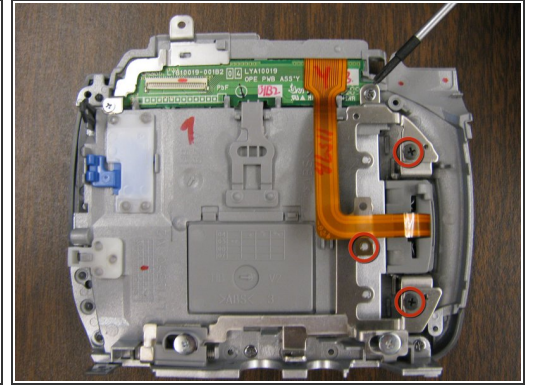
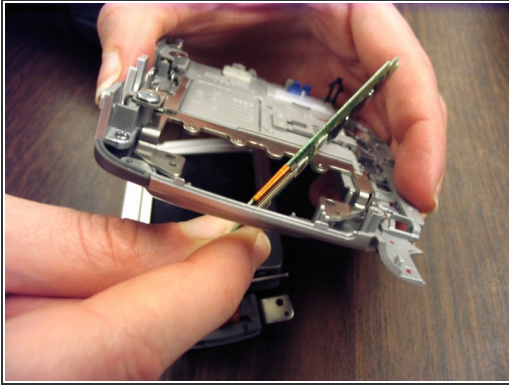
- Before reattaching the LCD screen lid, make sure the silver hinge piece is inserted in the slot next to the circuit board.
- Replace the loose orange band in the slot on the hinge side of the LCD screen.
- Snap the LCD screen lid back in place starting at the side opposite the hinge.

## Step 19



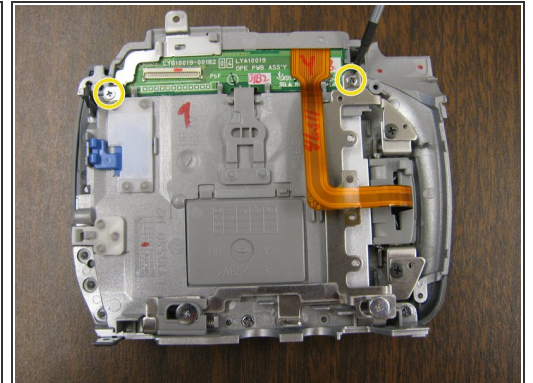
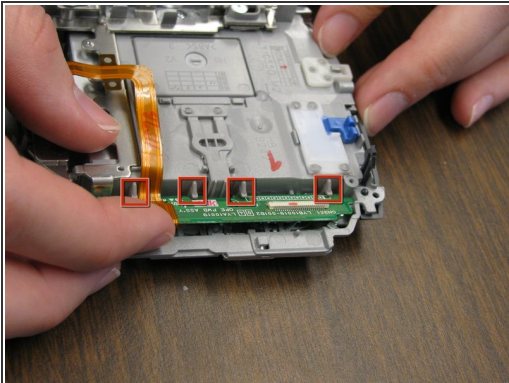
- Reinsert the shortest of the 3 screws on the top of the screen cover opposite of the hinge.
- Reinsert the 2 remaining screws on the hinge side of the LCD screen.

## Step 20



- Place the loose circuit board back through the empty hinge space.
- Line up the LCD screen in slot on the camera base and snap it into place.
- Reinsert the 3 screws along the orange band to hold the LCD screen onto the entire panel.

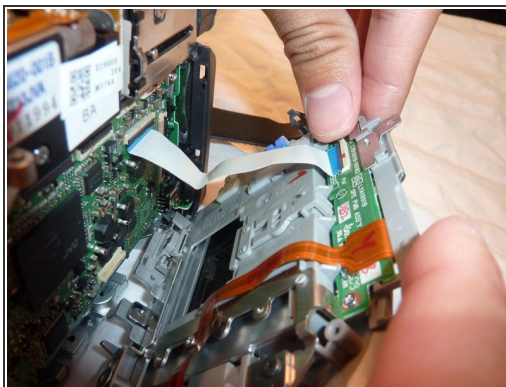
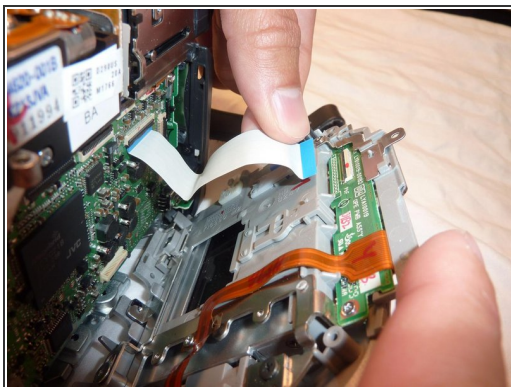
## Step 21



- Reinsert the circuit board into the slot. Make sure to lock it securely under the tabs.
- Reinsert the L-shaped metal piece into its slot. Line it up with the screw hole and the protruding place holder.
- Reinsert the 2 screws in the circuit board with the longer screw holding the L-shaped metal piece in place.



## Step 22



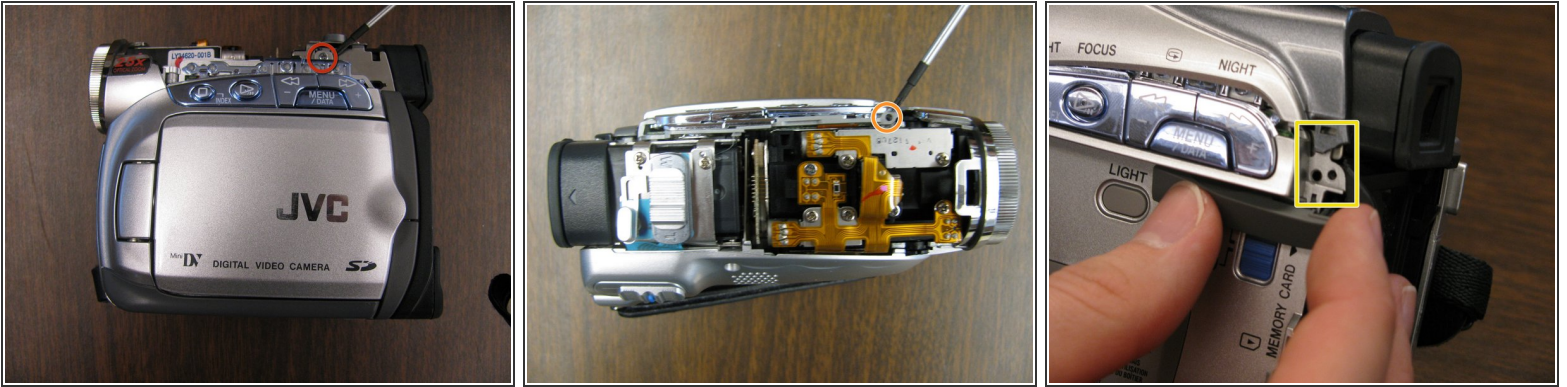
- Reattach the white tab by placing it under the thin, black slot and snap it back into place.
- Carefully line up the bottom of the LCD panel and the camera base, then snap it back into place.

## Step 23



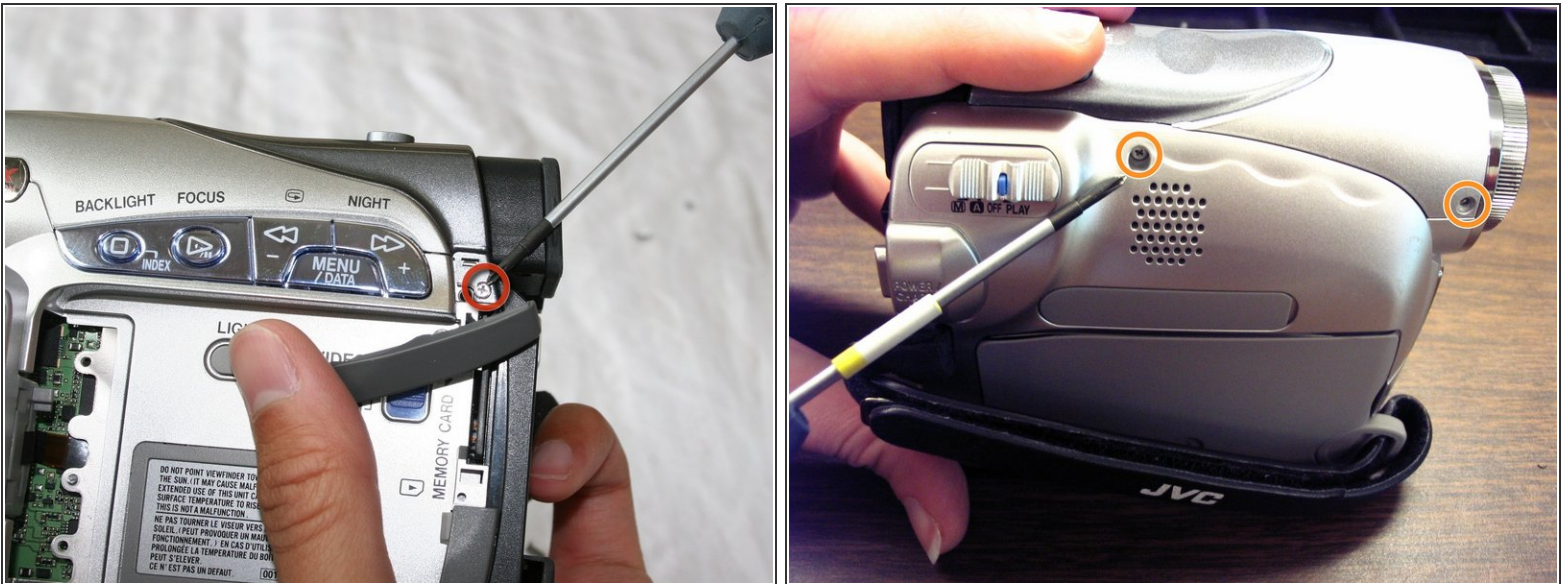
- Reinsert the LCD screen hinge and screw in the 2 screws to hold it in place
- Reinsert the 5 screws on the bottom panel of the camera. The shortest screw needs to be put into the hole with the arrow pointing to it.

## Step 24



- Reinsert the 2 screws under the top cover of the LCD side of the camera.
- Move the dark grey tab to ensure that the top cover is not damaged.
- Line up the top cover on the camera base and then snap it back into place.

## Step 25



- Reinsert the screw under the dark, grey tab on the LCD side of the camera and replace tab.
- Reinsert the 2 screws on the side of the camera opposite of the LCD screen.



## Step 26



- Reinsert the 2 screws connecting the back plate to the camera base.
- ☑ Reinsert the battery.
- ☑ Turn it on and test functionality.