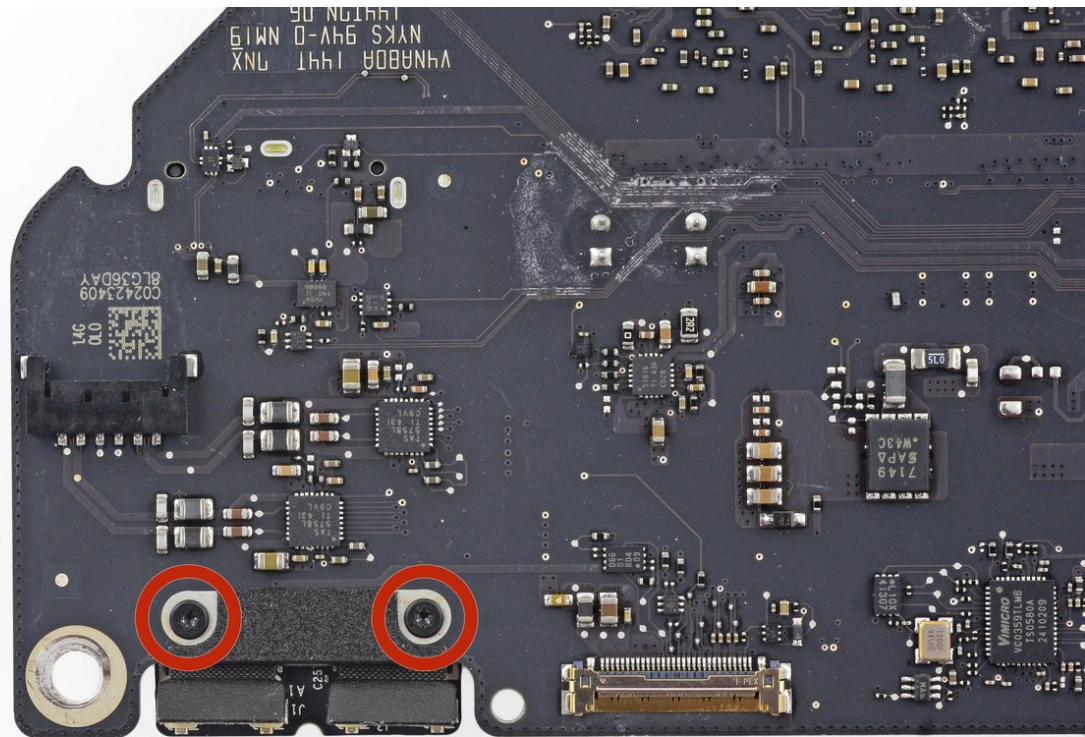




# iMac Intel 21.5" EMC 2805 AirPort/Bluetooth Card Replacement

Prereq for logic board.

Written By: Walter Galan



---

# INTRODUCTION

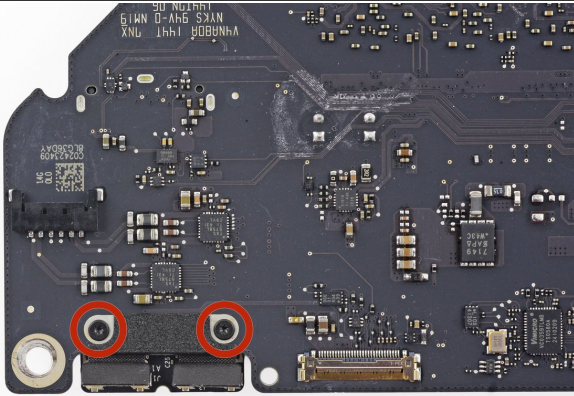
Prereq for logic board.



## TOOLS:

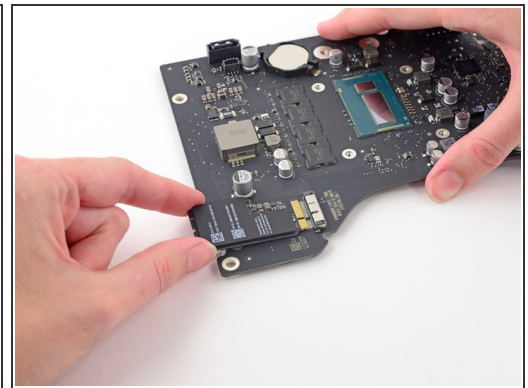
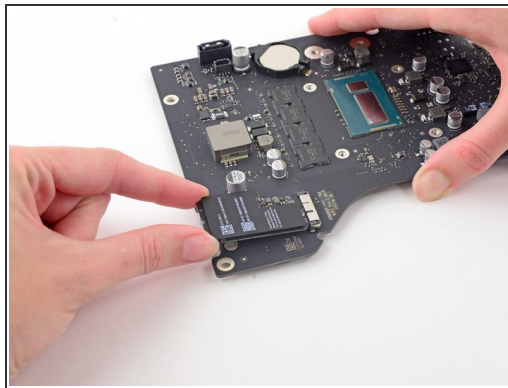
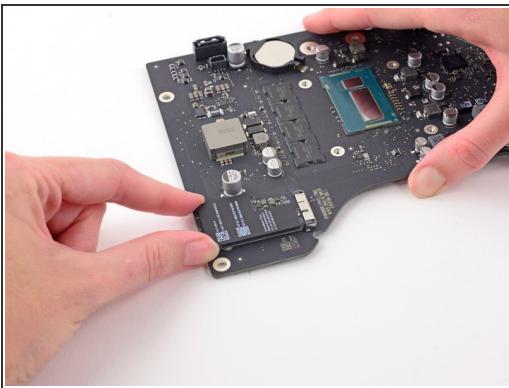
- [T5 Torx Screwdriver](#) (1)
-

## Step 1 — AirPort/Bluetooth Card



- Remove the two 3.2 mm T5 screws securing the AirPort/Bluetooth card to the logic board.

## Step 2



- Slightly lift the AirPort/Bluetooth card and pull it straight out its socket.

**⚠ Do not** use excessive force to pull the end of the AirPort/Bluetooth Card away from its socket on the logic board. Doing so may cause severe damage.

**☑** When reinstalling the card, be sure it is properly seated before reinstalling the retaining screws.

To reassemble your device, follow these instructions in reverse order.