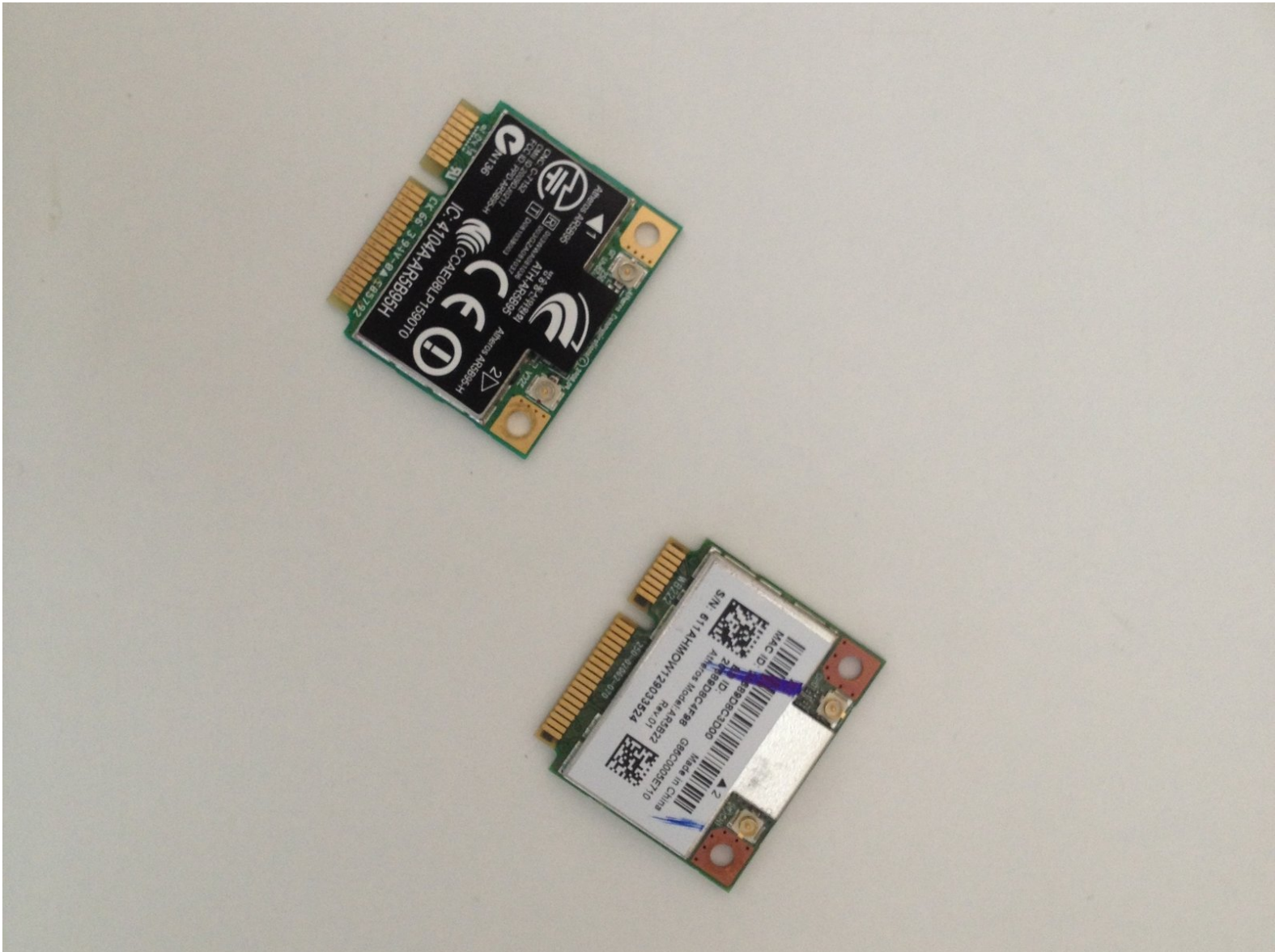




# Dell Inspiron N5110 - WiFi Half Mini PCI card Replacement

Dell Inspiron N5110 - WiFi Half Mini PCI card Replacement

Written By: ZFix



## INTRODUCTION

WiFi & Blue-tooth mini PCI card replacement. To change the Wifi card on this model you must to remove the upper case of the laptop. This is not a good engineering designee. We will show you how to do this.

[Please SUBSCRIBE to my channel ツ](#)

[video: <http://youtu.be/Tjo2cGmfRpg>]



### TOOLS:

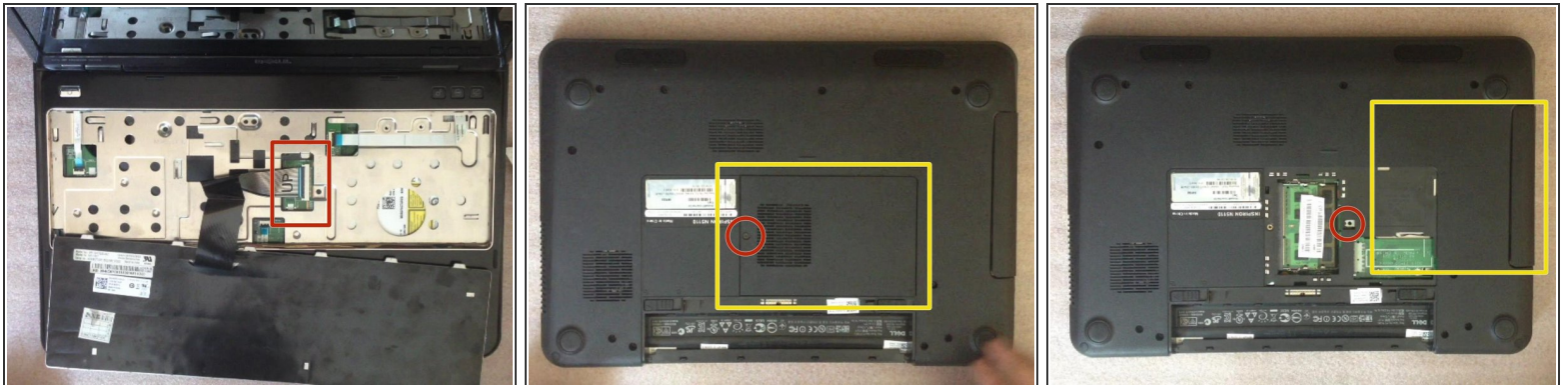
- [Phillips #0 Screwdriver](#) (1)
  - [iFixit Opening Picks set of 6](#) (1)
  - [Metal Spudger](#) (1)
-

## Step 1 — WiFi Half Mini PCI card



- Switch off the laptop and remove the battery.
- The keyboard is held by 4x locking clips.
- By using cutter, carefully lift up the one side of the keyboard and start opening the locking clips.

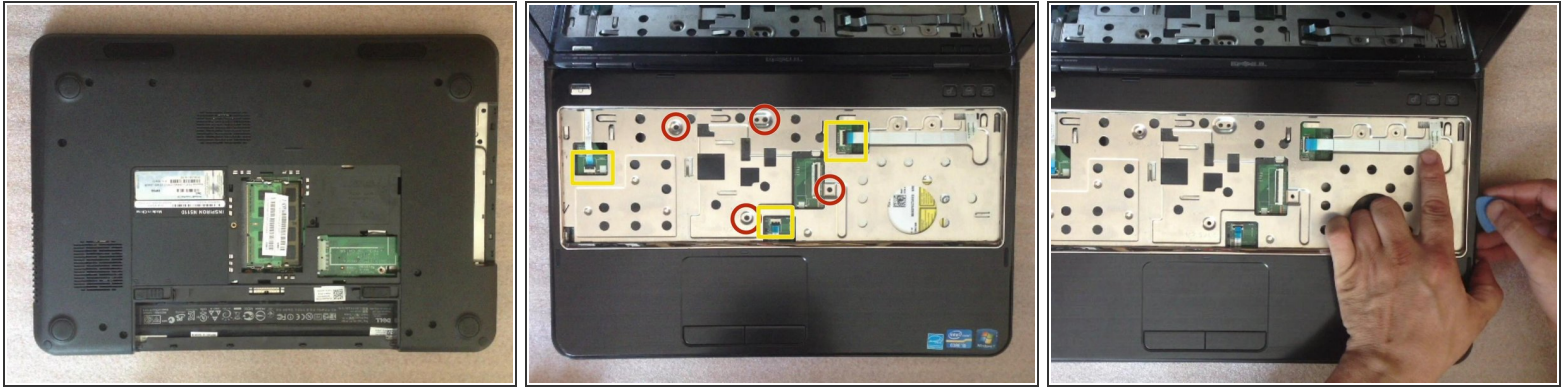
## Step 2



- Disconnect the keyboard cable and remove the keyboard.
- Remove the access door screw and the access door
- Remove the screw securing the optical drive, and remove the optical drive

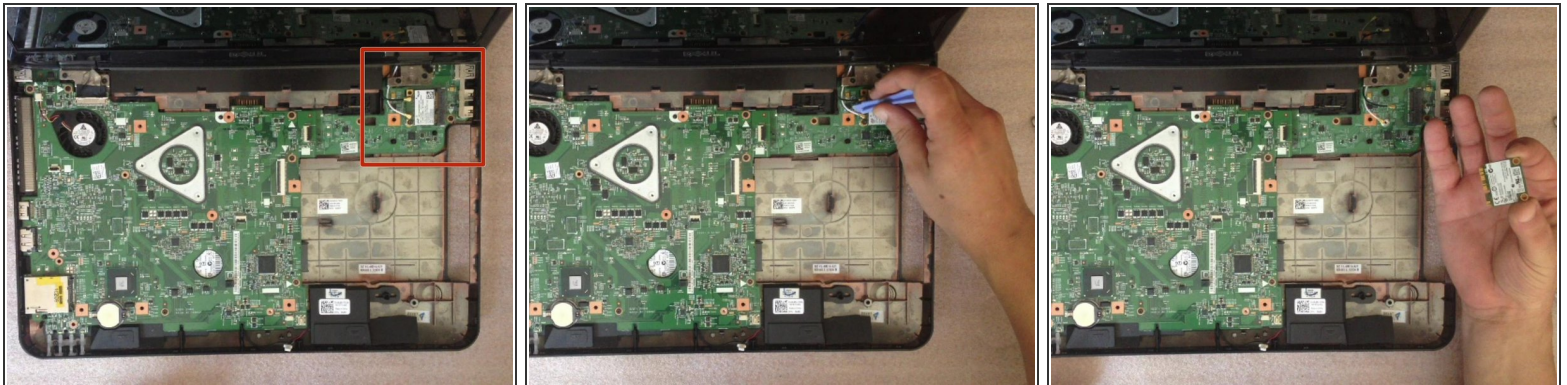


### Step 3



- Remove all the screws
- Pry the upper plastic casing off of the laptop

### Step 4



- Here is the Wi-Fi card
- Disconnect the antenna cable connectors
- Remove the Wi-Fi card
- .



[Please SUBSCRIBE to my channel ツ](#)

To reassemble your device, follow these instructions in reverse order.