



(TC) PlayStation Teardown

This can be used as a repair guide with my level of detail, but there are better guides online.

Written By: Nick





TOOLS:

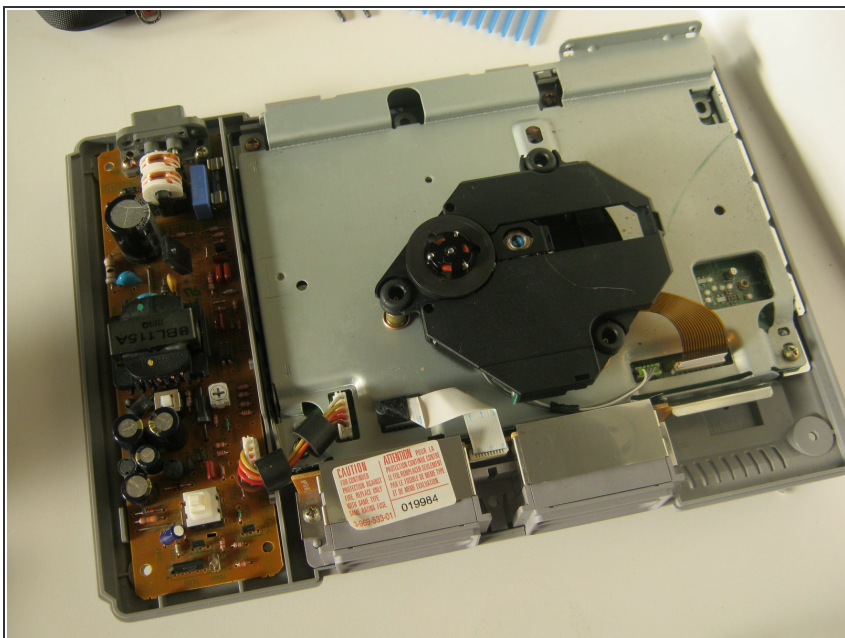
- [Phillips #0 Screwdriver](#) (1)
-

Step 1 — (TC) PlayStation Teardown



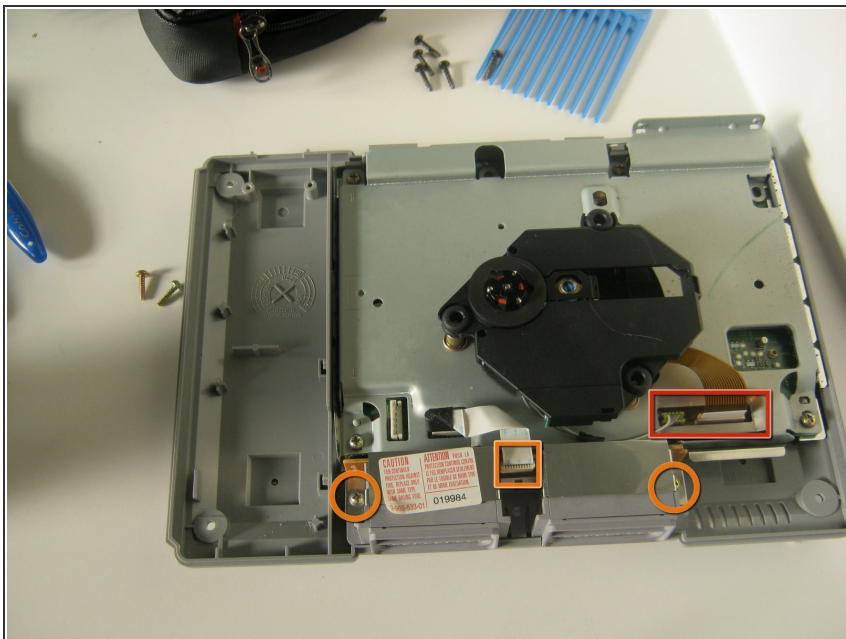
- Flip the unit upside down to access the six screws on the bottom.
- Remove the six screws indicated with a Phillips-head screwdriver. All the screws are of the same length.

Step 2



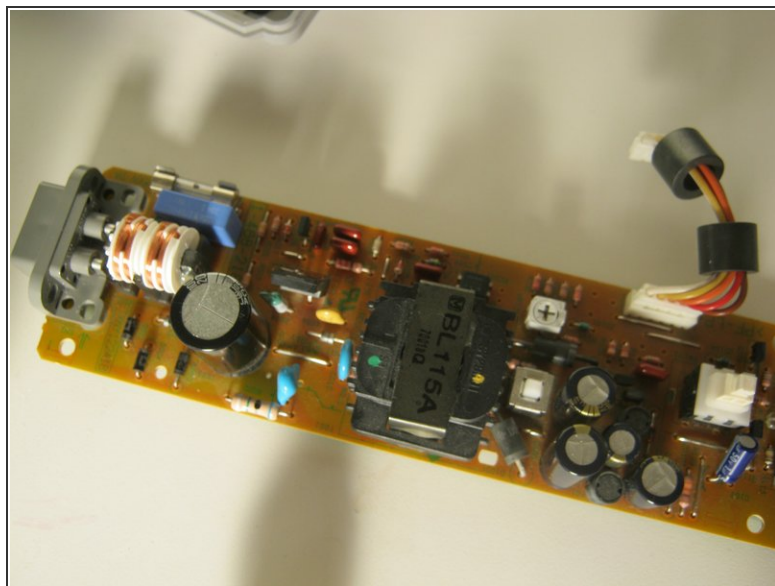
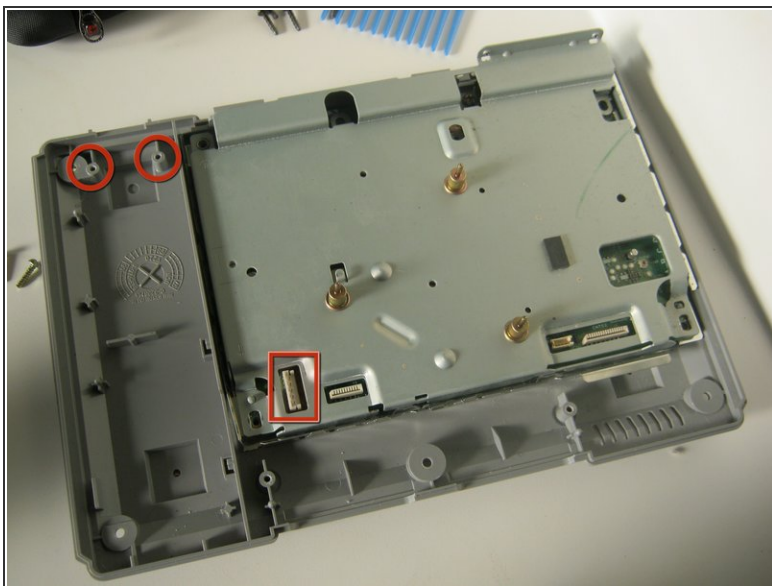
- Turn the unit back over, and pull the top half up and away from the device.

Step 3



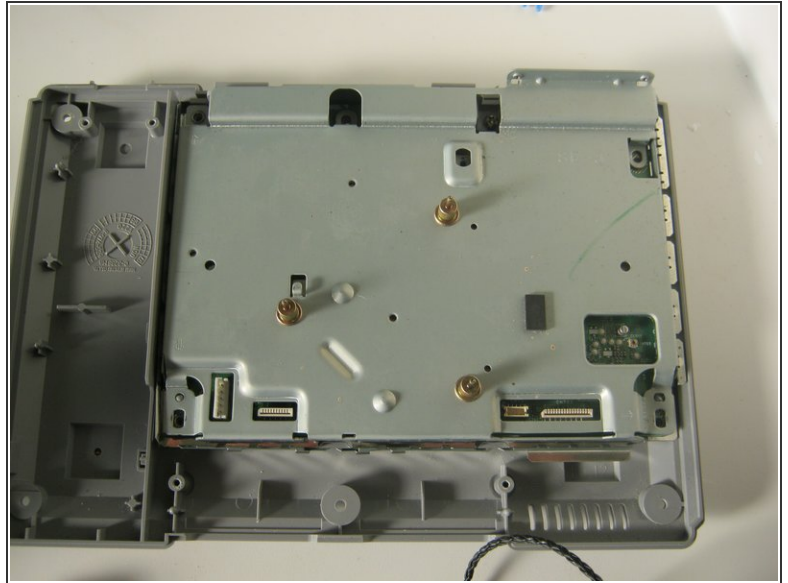
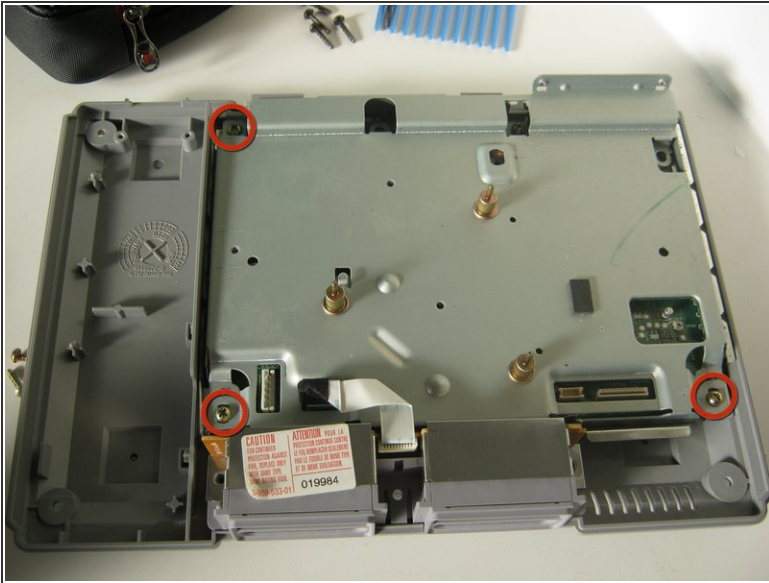
- Unplug the laser assembly's power cable and ribbon cable from the main board.
- Remove the two screws on the memory card/controller port, disconnect the ribbon cable, and lift it out of the case.

Step 4



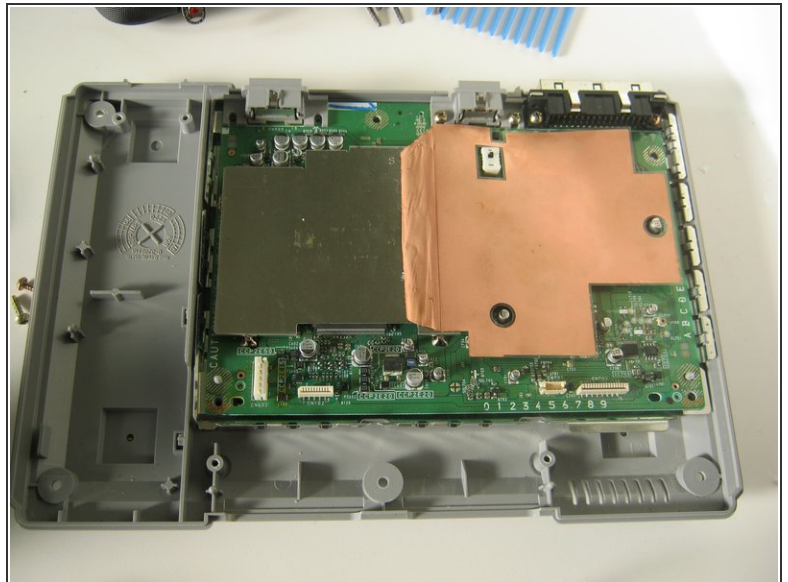
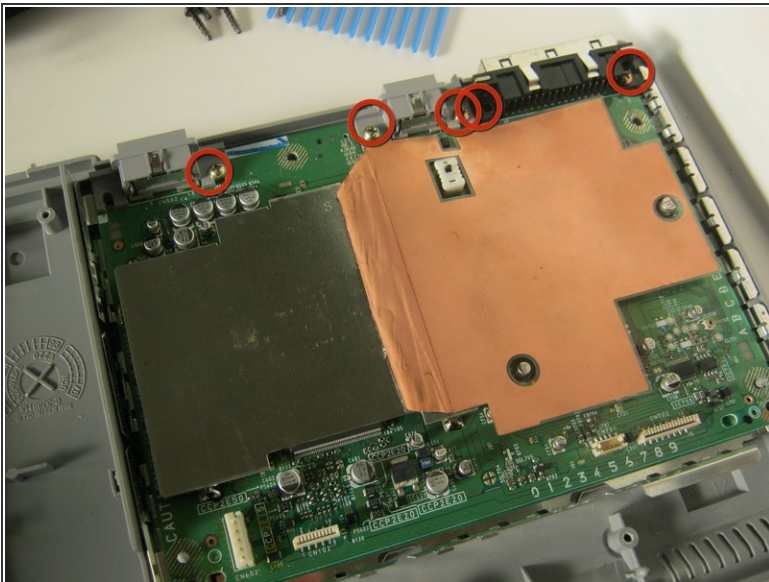
- To remove the power supply, disconnect the cable and remove the two screws, then lift it out of the case.

Step 5



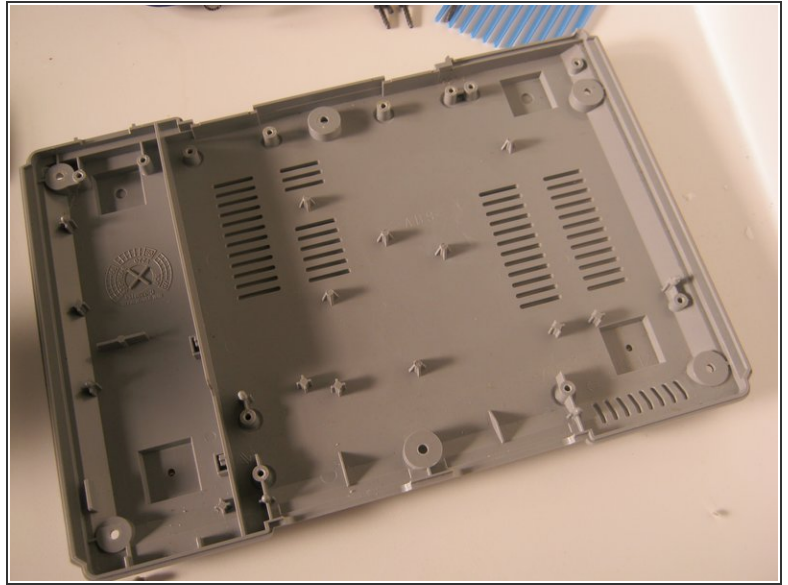
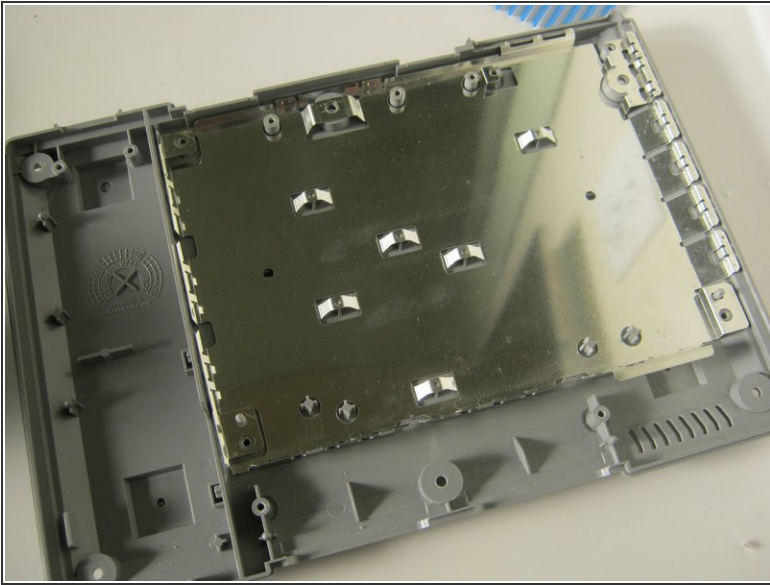
- Remove the 3 screws from the shield.

Step 6



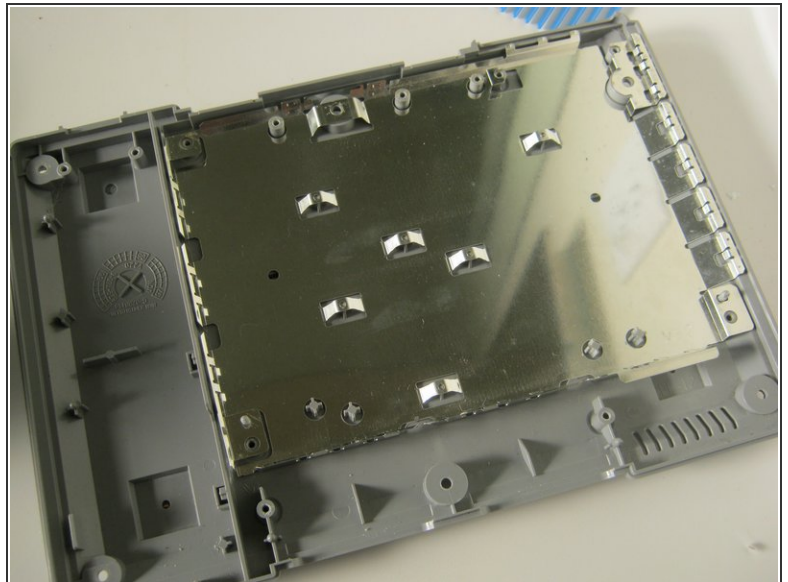
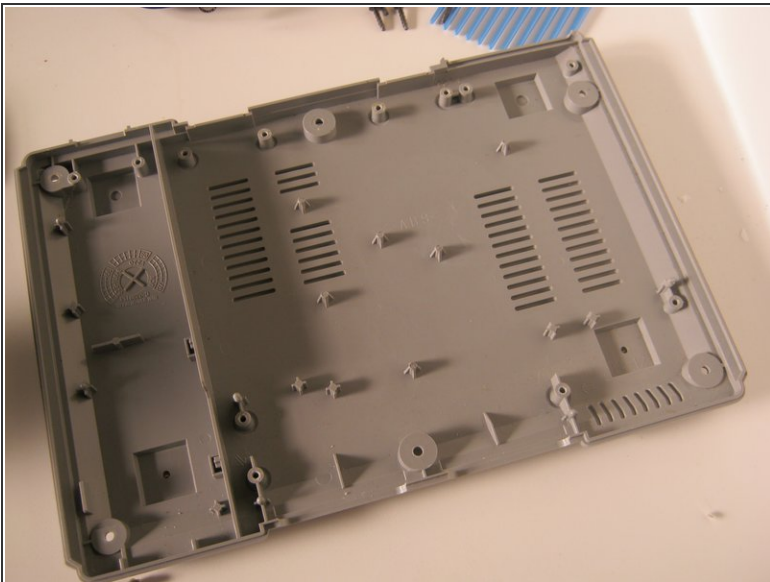
- Remove the 5 Phillips screws.
- You can now lift the main board out of the case.

Step 7



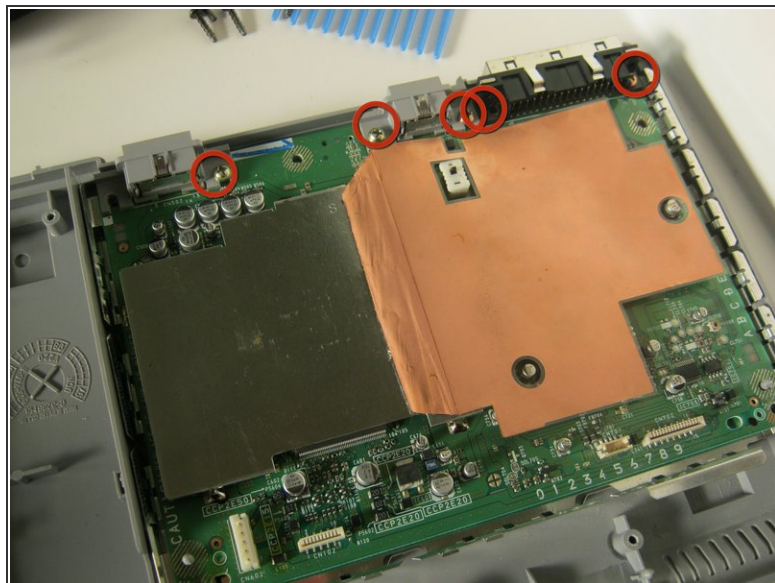
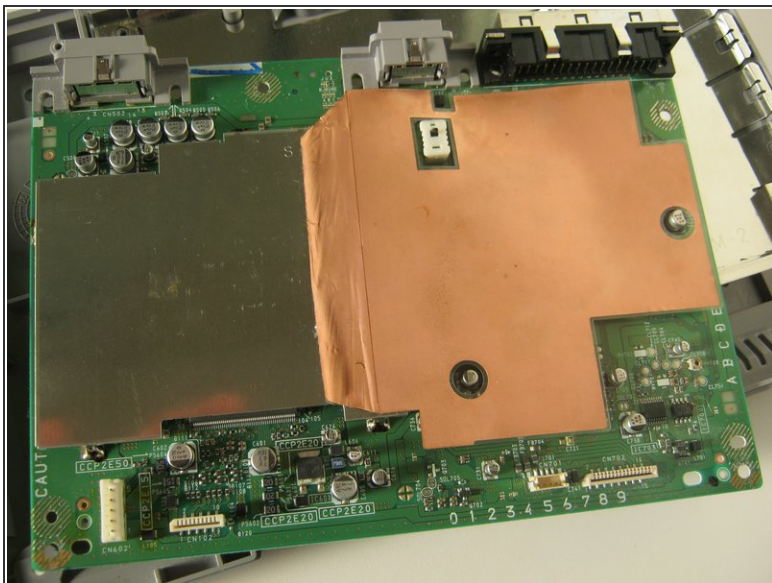
- Lift the RF shield out of the case.

Step 8



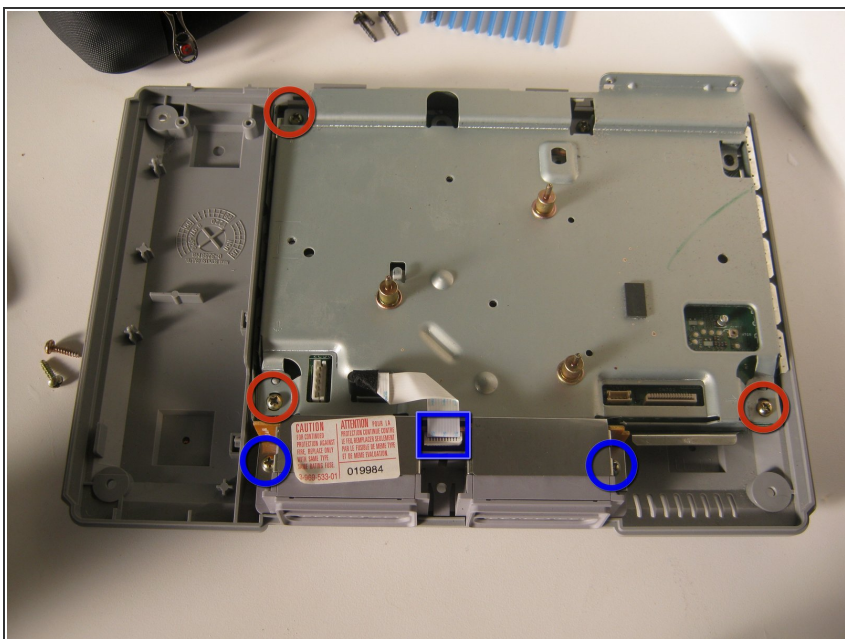
- Reinstall the RF shield by dropping it in and lining up the slots and tabs.

Step 9



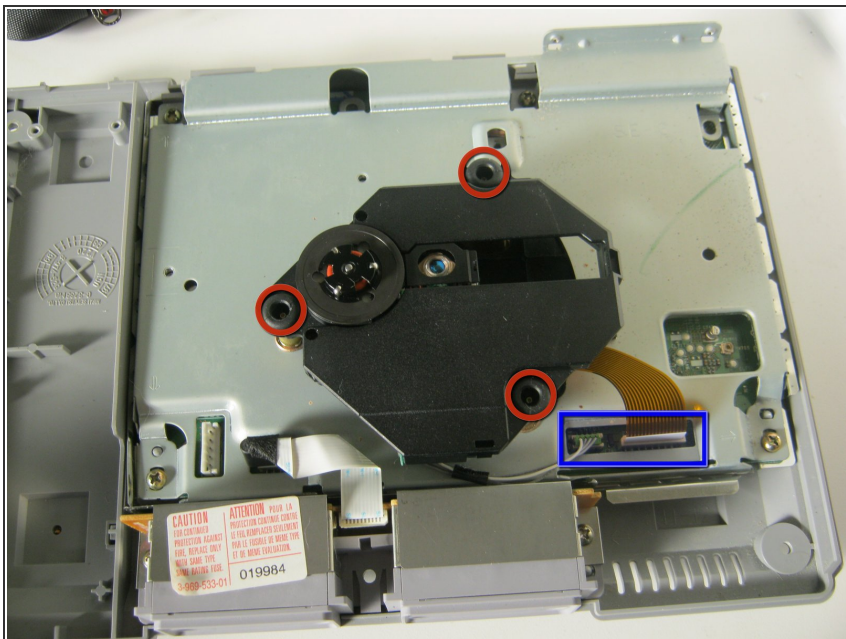
- Replace the main board. Only install the screws indicated in red.

Step 10



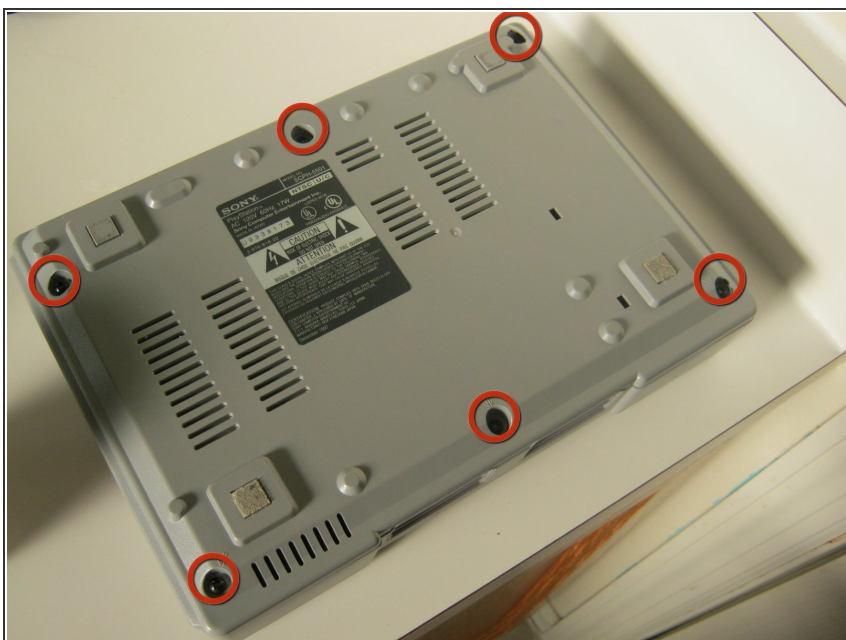
- Replace the top shield, and secure with the 3 screws indicated.
- Reinstall the memory card / controller module. Connect the ribbon cable and replace the 2 screws.

Step 11



- Align the optical drive assembly with the three pegs.
- Reconnect the power and data cables for the optical drive.

Step 12



- Slide the cover on the system in the same way you took it off and replace the black screws indicated.

Step 13



- Plug in the console and turn it on.
- Thanks for looking at my teardown!

To reassemble your device, follow these instructions in reverse order.