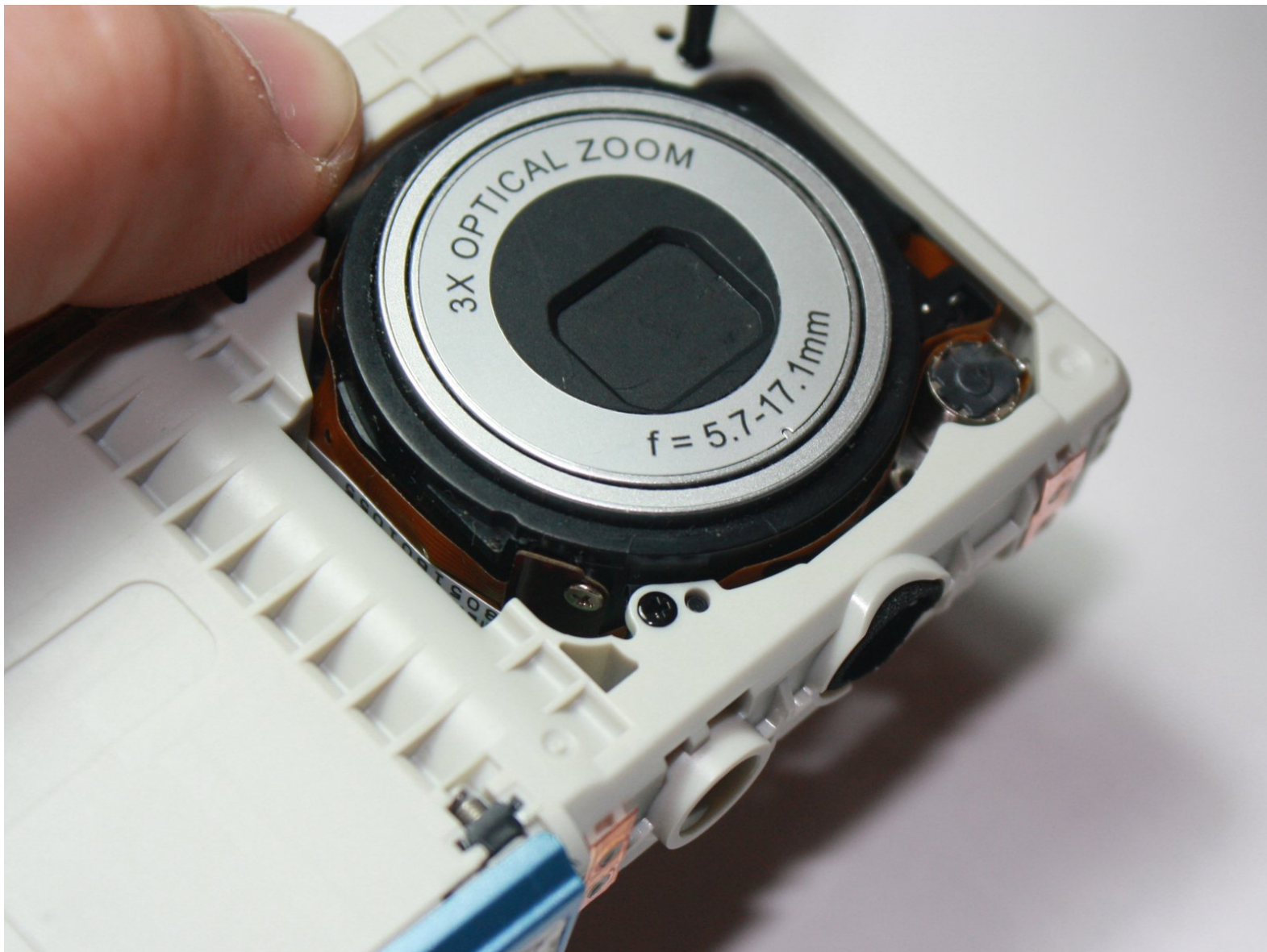




Sanyo VPC-T850 Lens Replacement

Written By: Jonathan Yau



INTRODUCTION

Steps on how to remove the lens. Removal of the LCD display and the outside case is required.



TOOLS:

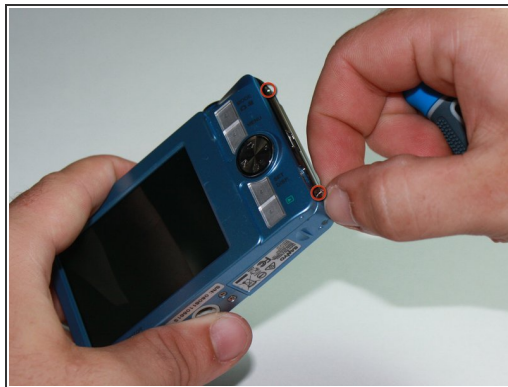
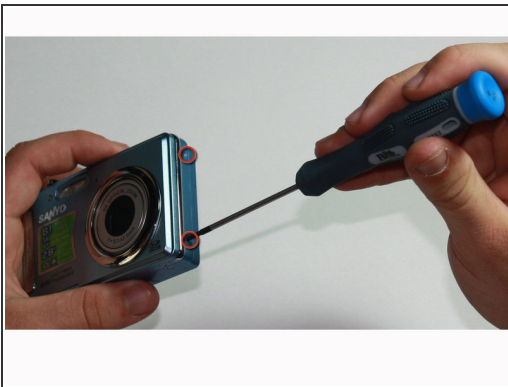
- [Phillips #00 Screwdriver](#) (1)
-

Step 1 — Disassembling Sanyo VPC-T850 Outer Casing



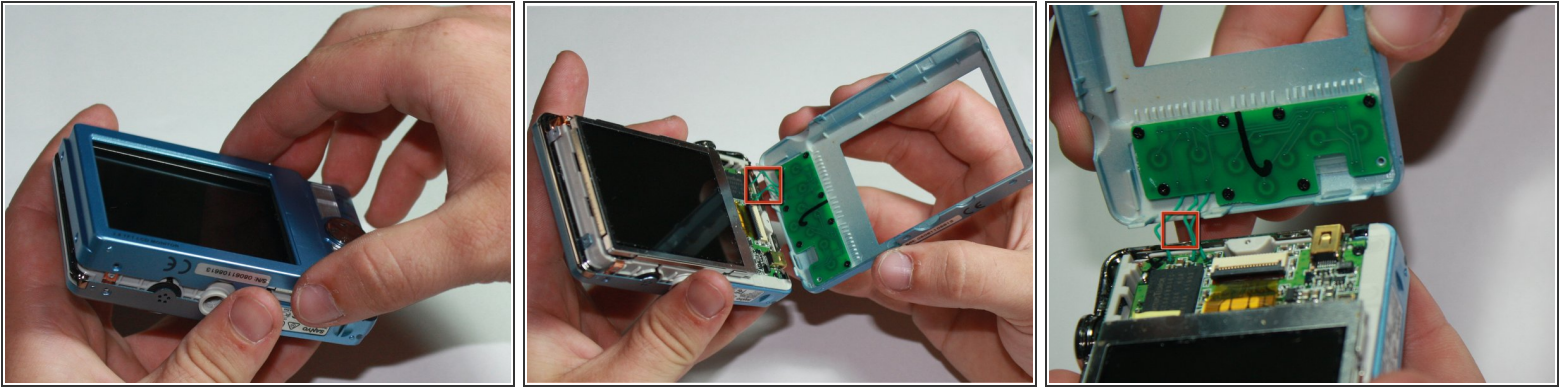
- Turn the camera off by pressing the small, square button embedded in the top rim of the camera.
 - Locate the battery hatch on the bottom-right side of the camera and slide it outwards to open.
 - In the compartment, move the small notch and push down on the battery to remove it.
- ★ During reassembly, there is an arrow on the battery hatch indicating which way it goes in.

Step 2 — Remove Screws



- Remove the eight screws around the sides and bottom of the camera using a Phillips #00 screwdriver.

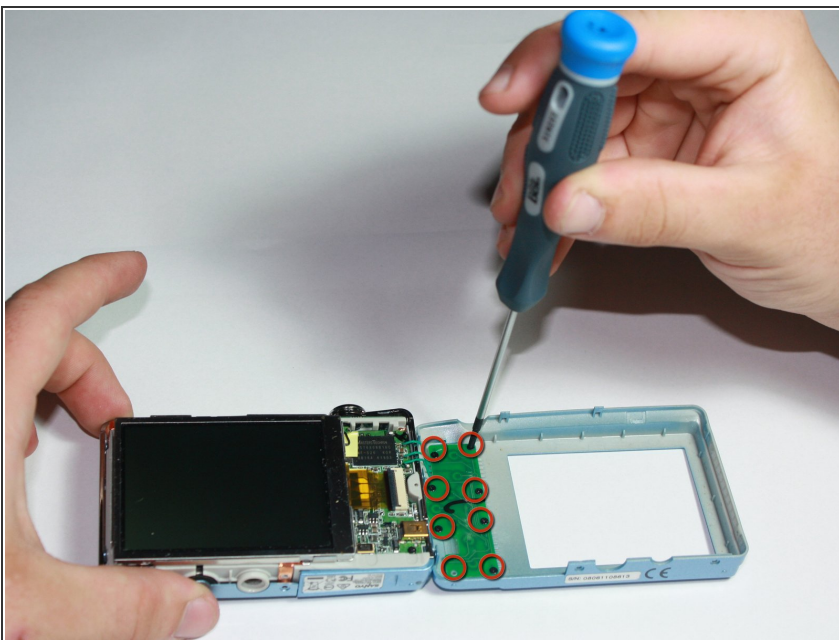
Step 3 — Remove Rear Panel



- Using the spudger, gently pry the rear panel away from the left side.

⚠ Be careful not to damage the three green cables as you remove the rear panel of the camera.

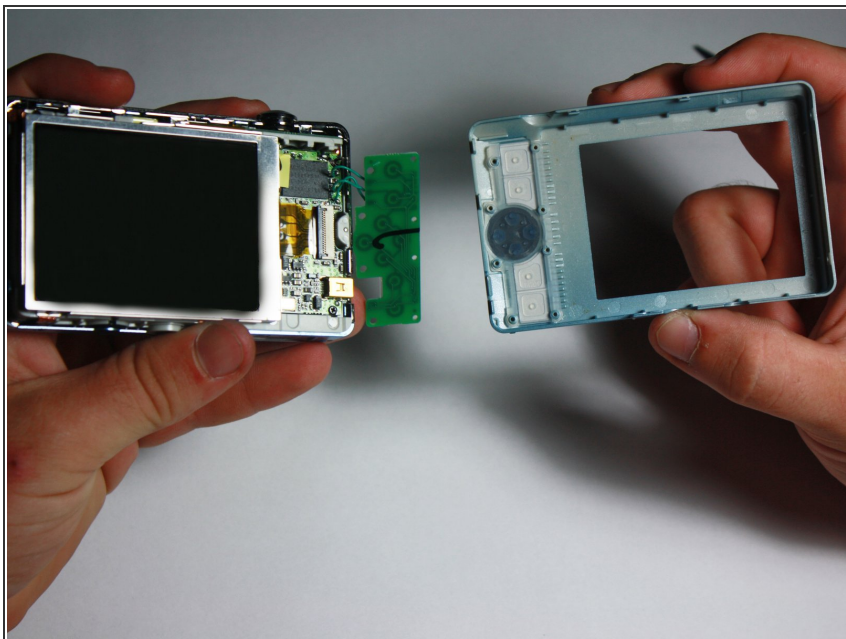
Step 4



- Using the Phillips #00 screwdriver, remove the eight black screws connecting the green keypad chip to the rear panel.

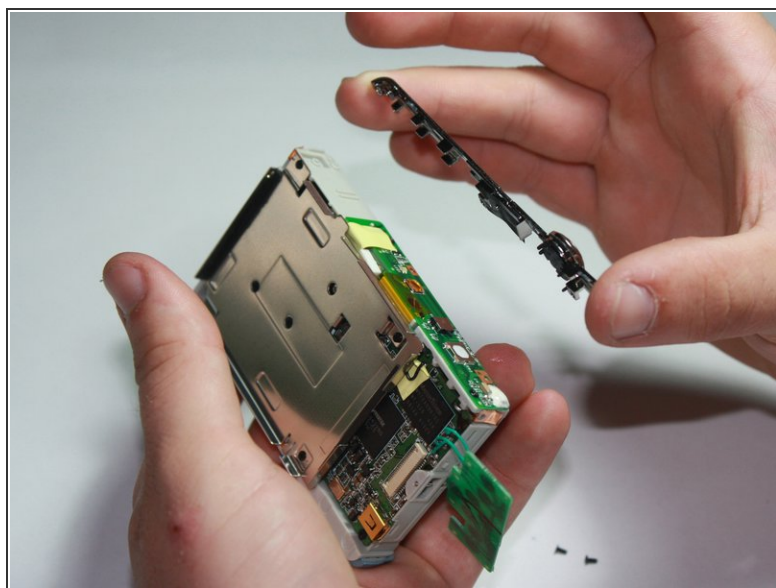
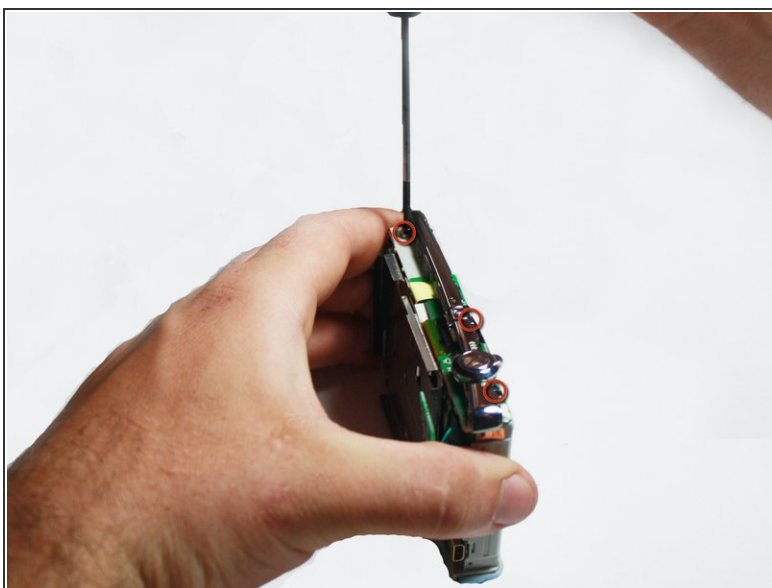
⚠ Do not put any excessive force on the green wires.

Step 5



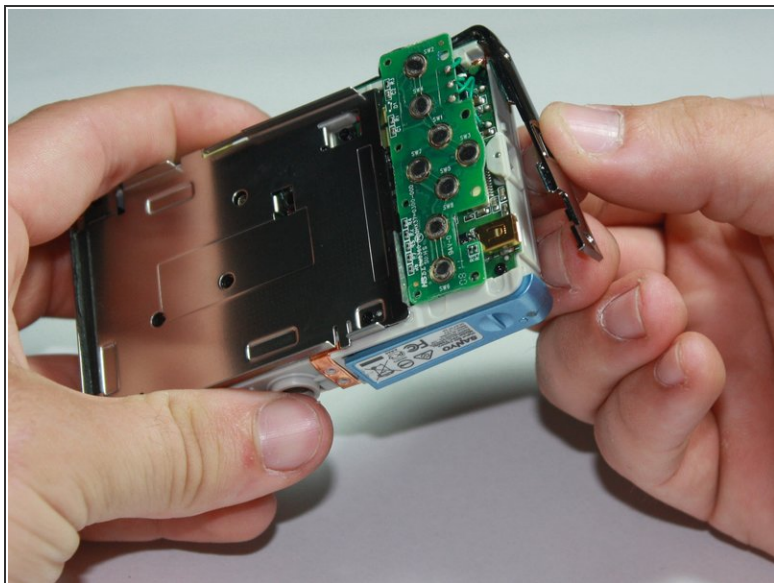
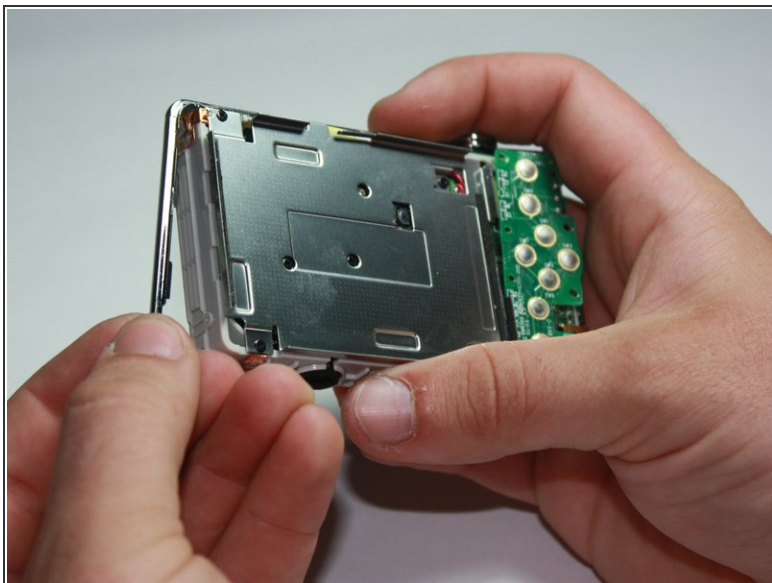
- Separate the rear panel from the rest of the camera.

Step 6



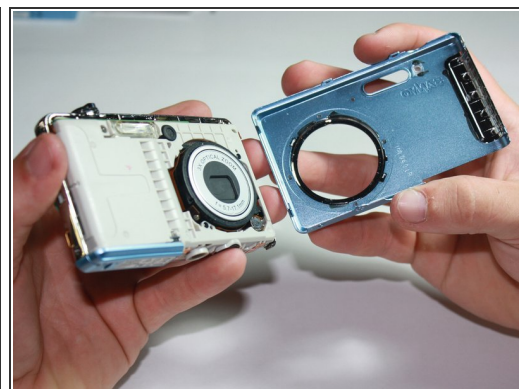
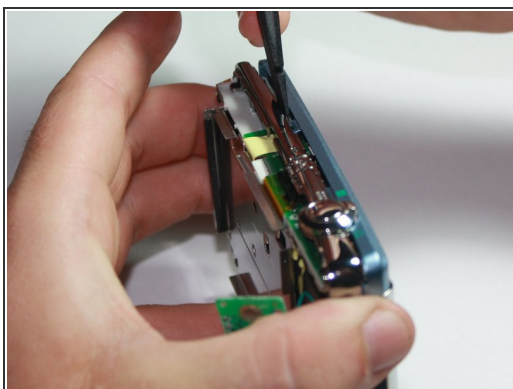
- Using the Phillips #00 screwdriver, remove the 3 screws located across the top of the camera.
- Separate the black plastic panel from the camera. The camera button will be attached, so be gentle.

Step 7



- Carefully pull off the side covers wrapped around the camera.

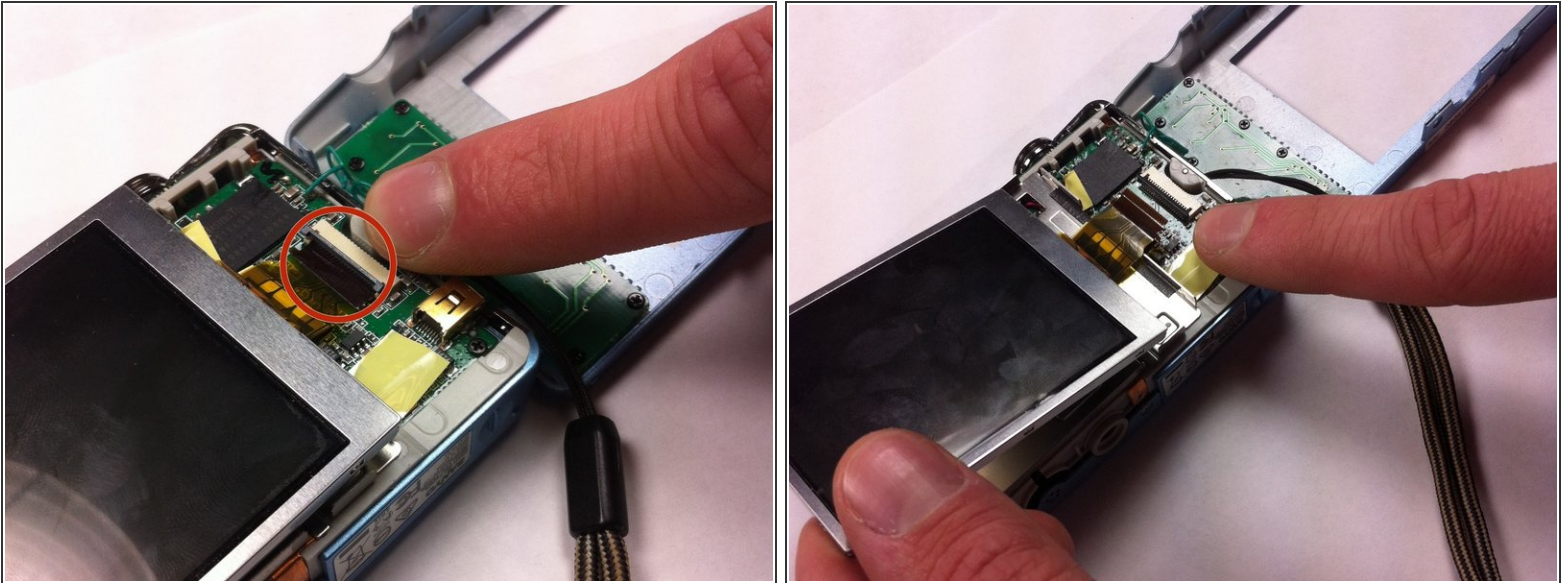
Step 8 — Remove Front Cover



- Using the spudger, gently lift off the front cover of the camera.

⚠ The front cover is fragile, so be gentle when removing it. It can easily break if not removed carefully.

Step 9 — Disconnect the Ribbon



⚠ Use caution not to damage ribbon when disconnecting.

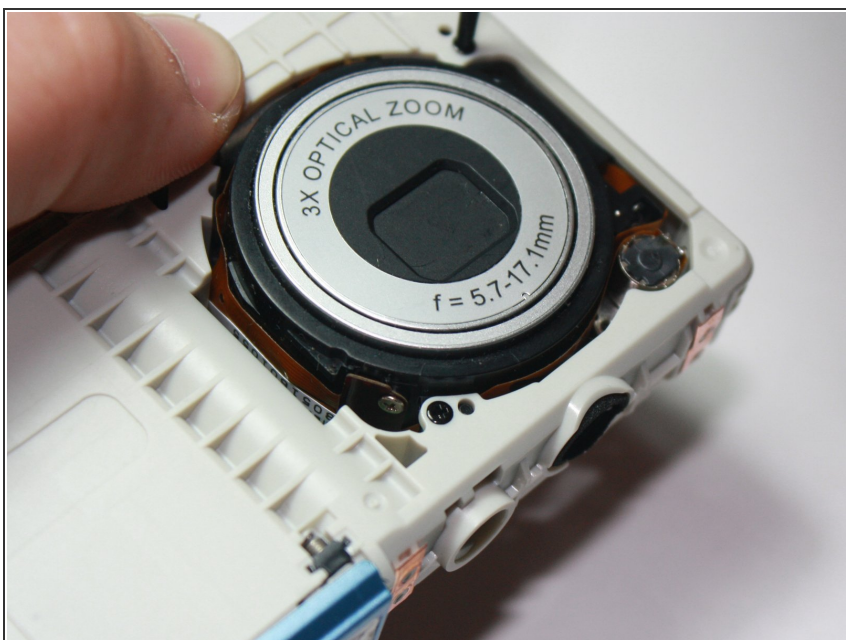
- The yellow ribbon is attached to the right side of the screen and goes to a black connector piece.
- Gently flip the black connector away from the LCD screen to unlock the yellow ribbon.
- Carefully pull the yellow ribbon towards the LCD screen to disconnect it.

Step 10 — Remove LCD Screen



- The LCD screen should now be disconnected from the rest of the camera and a pry tool can be used to lift it out of its casing.

Step 11 — Lens



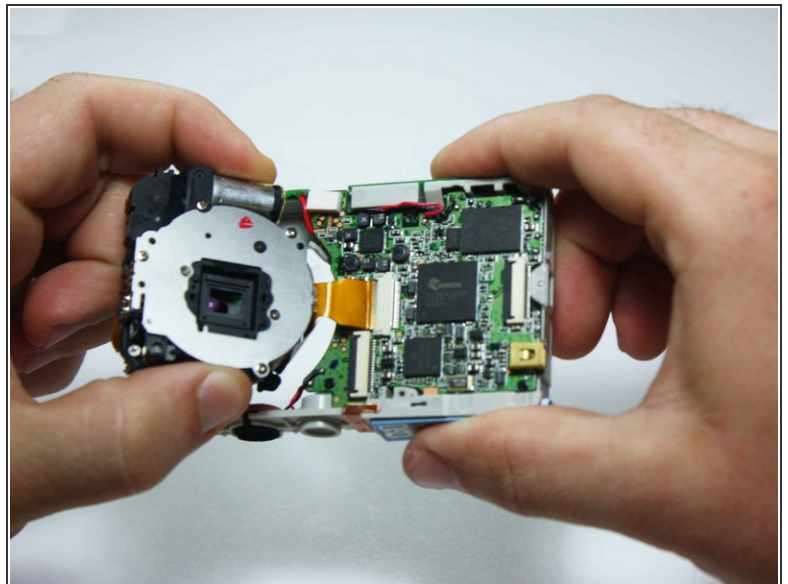
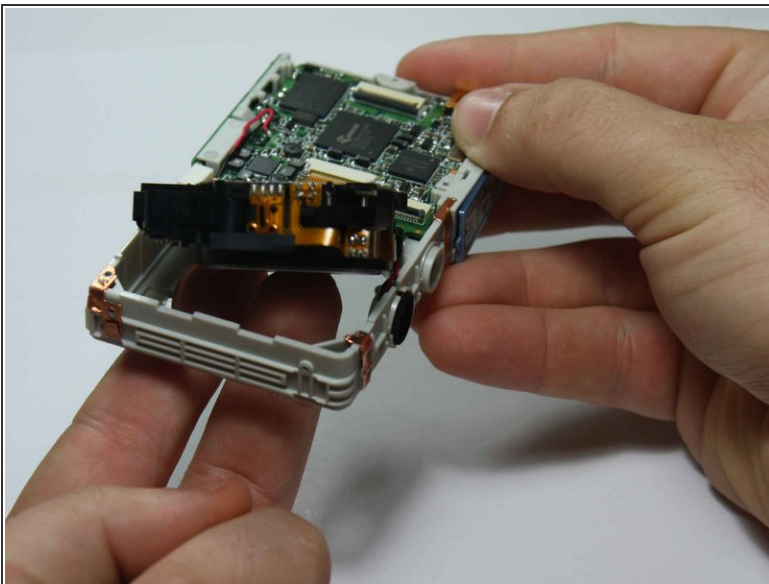
- Flip the camera over with the lens facing up.

Step 12



- Using the Phillips #00 Screwdriver, remove the two screws holding the lens in place.
- ☑ Use your other hand to hold the lens in place so the lens does not fall out while removing the screws.

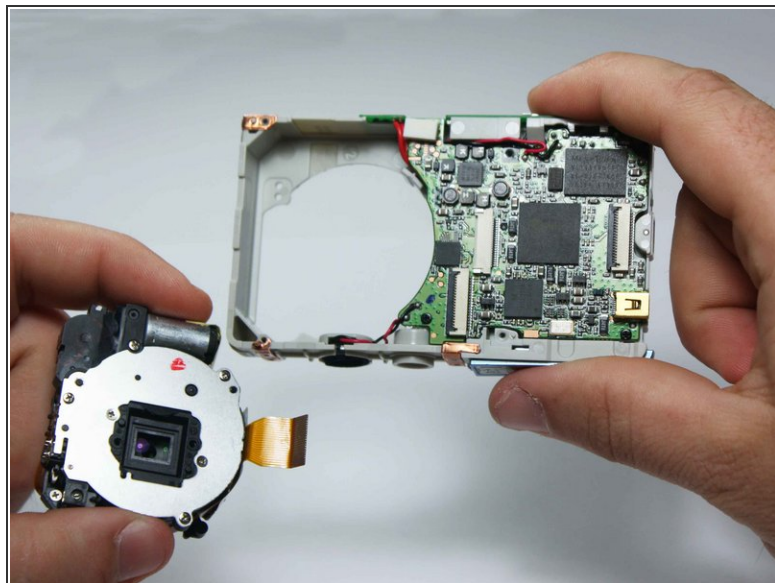
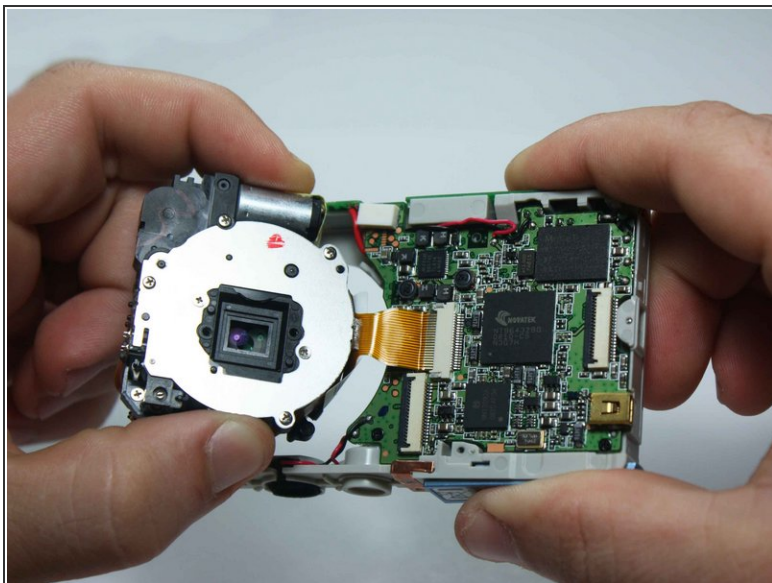
Step 13



- While keeping hold of the lens, flip the entire assembly around.
- Using your fingers, gently push the lens out from its position in the casing.

⚠ There is still a flat, golden wire connecting the lens to the motherboard.

Step 14



- Carefully unplug the golden wire from the motherboard to remove the lens from the assembly.