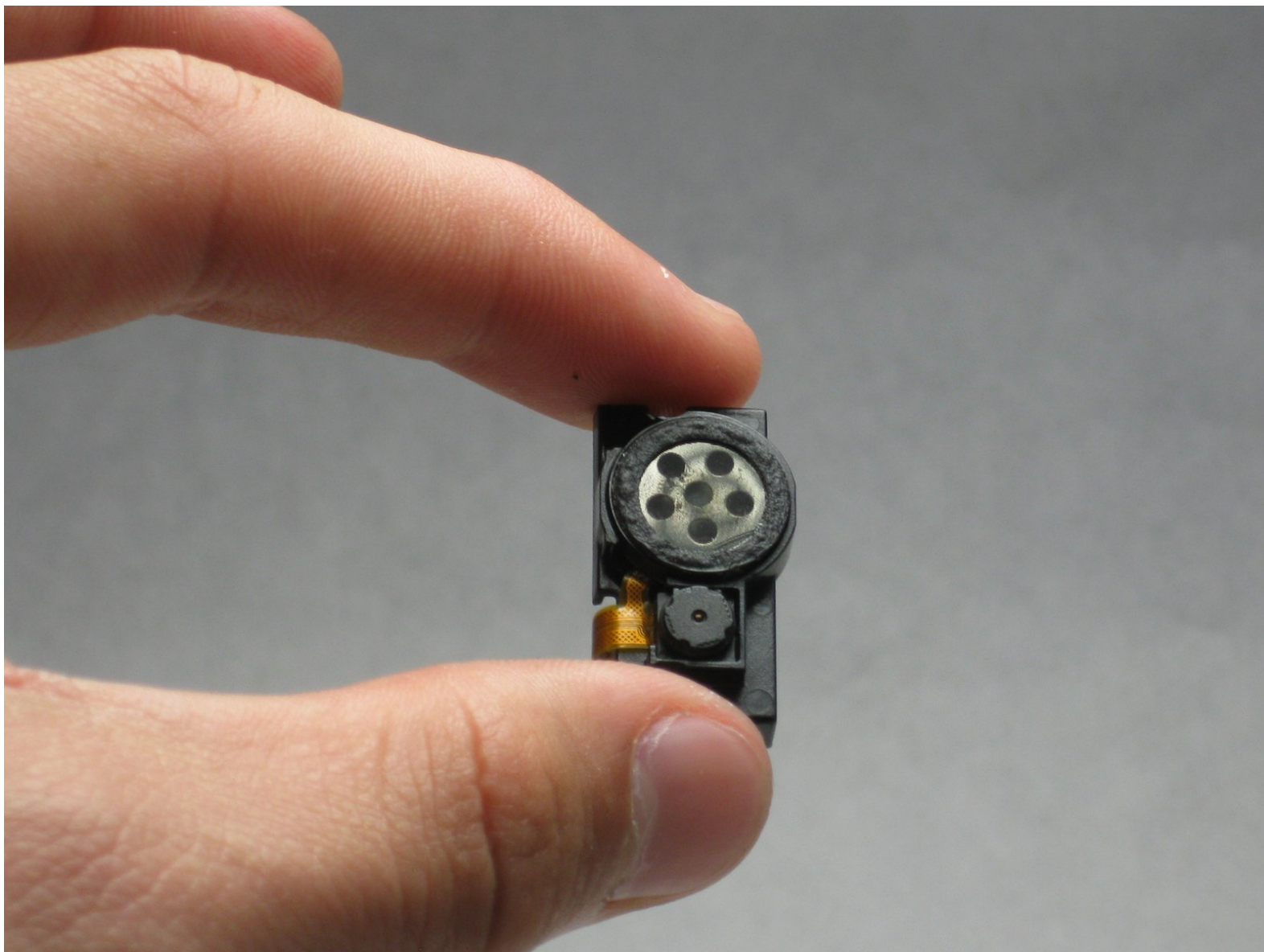




# Samsung Juke Camera/Speaker Replacement

How-to-guide for replacing the Samsung Juke...

Written By: Renee Kuzniar



# INTRODUCTION

How-to-guide for replacing the Samsung Juke SCH-u470 camera/speaker.



## TOOLS:

- [iFixit Opening Tool](#) (1)
- [Phillips #00 Screwdriver](#) (1)



## PARTS:

- [Samsung Juke SCH-u470 Audio/Speaker](#) (1)

## Step 1 — Battery



- Press and hold down the button on the bottom side of the phone with your finger.

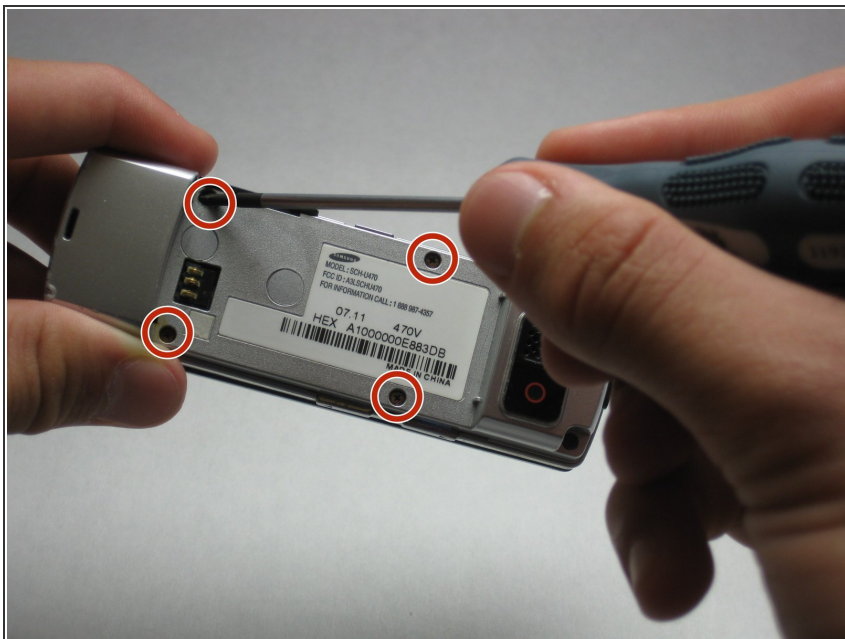
## Step 2



- While holding the button down, remove the back cover of the phone.

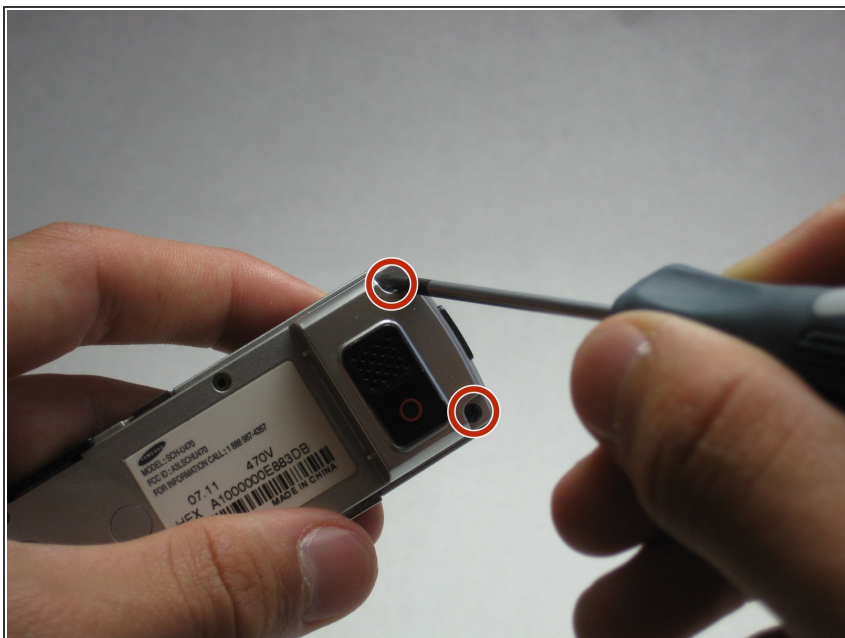


## Step 3 — Camera/Speaker



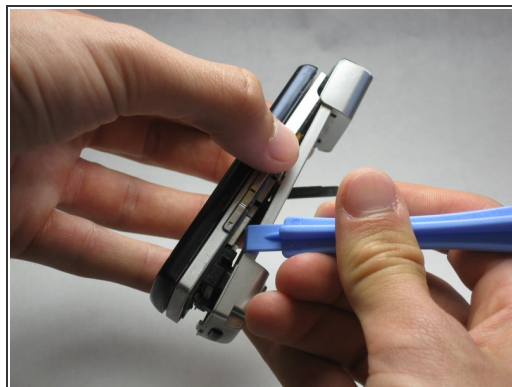
- Remove the four screws from the back of the phone using a Phillips #00 screwdriver.

## Step 4



- Remove the two 7.3 mm screws from the camera and the speaker at the bottom back plate of the phone using a Phillips #00 screwdriver.

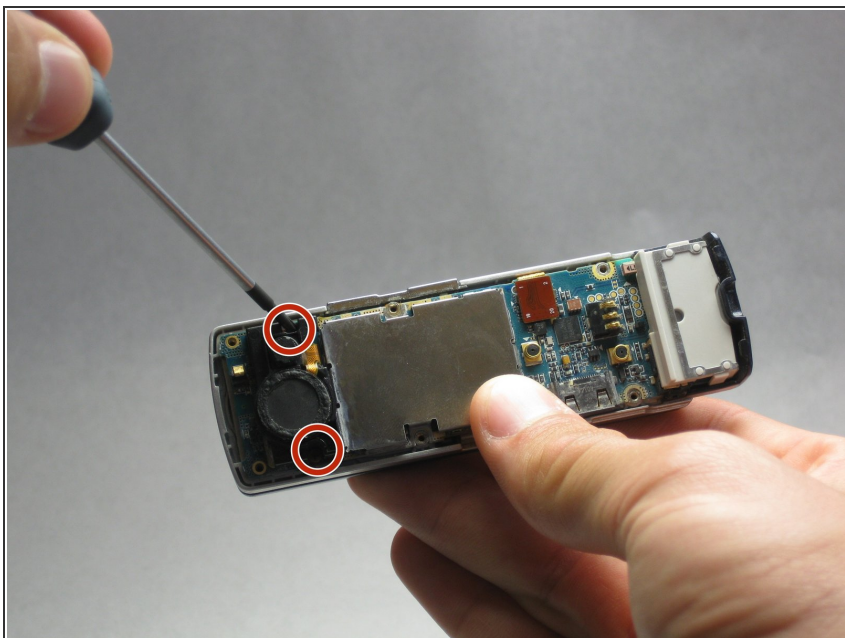
## Step 5



- Locate the USB port (where the charger can be plugged in). Using the iFixit opening tool, open the phone cover.

**⚠ Failure to open USB port cover at this stage may result in damaging the device.**

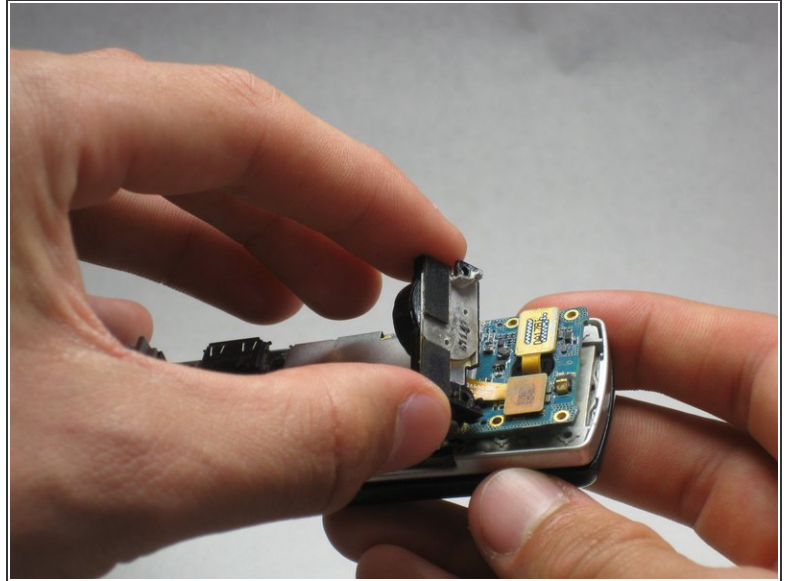
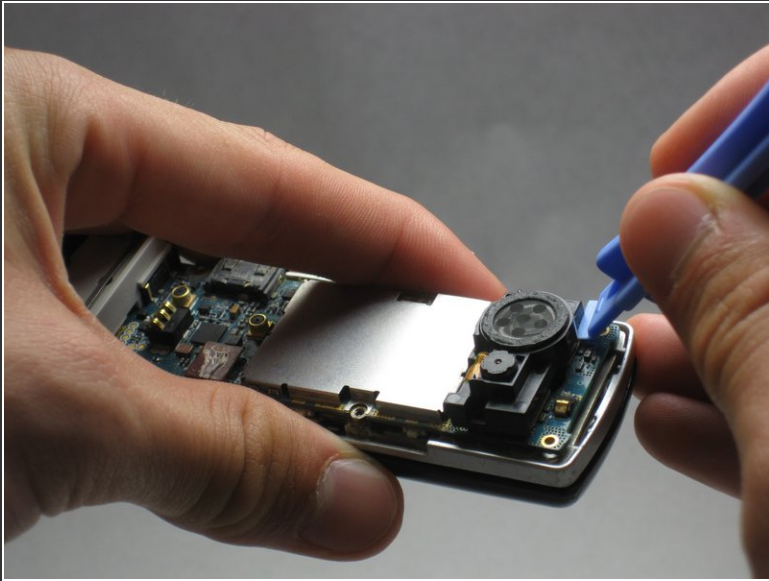
## Step 6



- Remove the 5.5 mm screws from both sides of the camera/speaker with a Phillips #00 screwdriver.



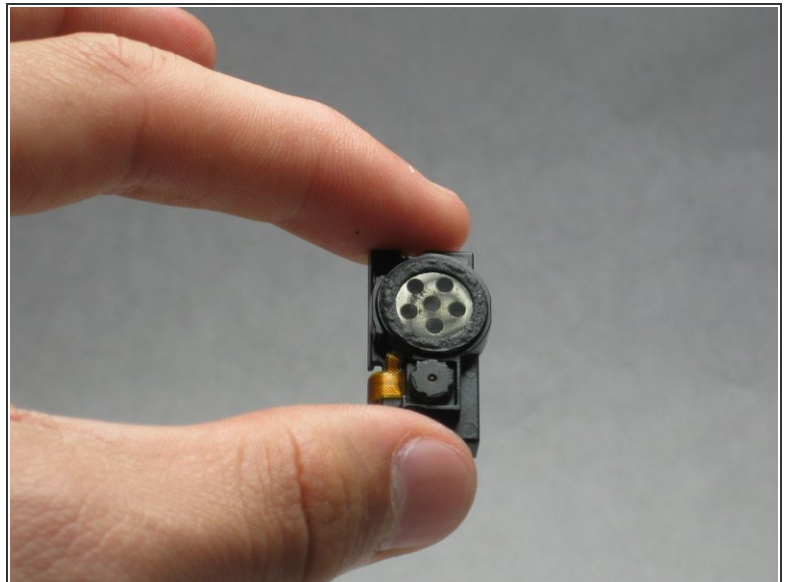
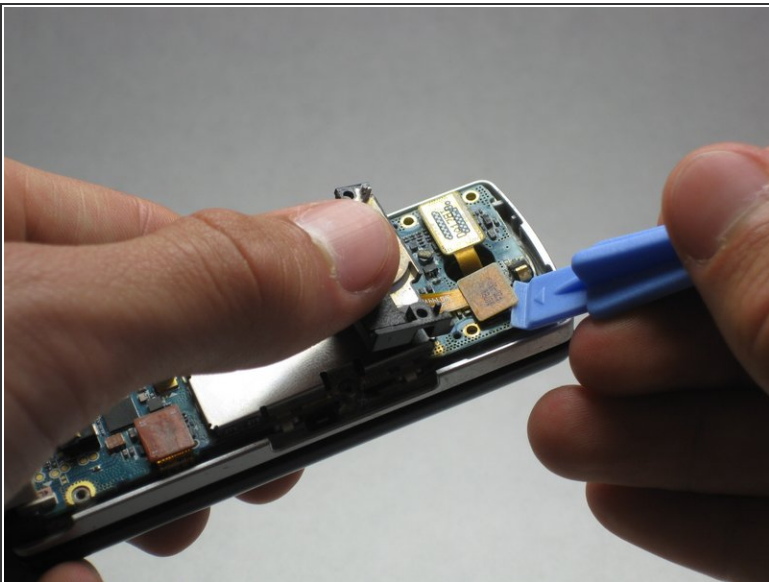
## Step 7



- Use the iFixit opening tool to remove the camera/speaker from the motherboard.

⚠ Practice caution to prevent damage to the attaching ribbon.

## Step 8



- Use the iFixit opening tool to gently pry the camera/speaker off.

To reassemble your device, follow these instructions in reverse order.